

# Land Management

Wildfire Safety Strategy Working Group  
Meeting #3 – August 13, 2025



# Ground Rules

- Chatham House Rule will apply – no personal or organizational attribution will be made to any comments/feedback provided during the meeting by any participant nor in written documentation. Recordings and/or artificial intelligence transcriptions of meetings are prohibited.
- Working group meetings, and other information exchanges are intended solely to provide an open forum for discussion purposes or means for the expression of various points of view in compliance with antitrust laws.
- Under no circumstances shall engagement activities be used as a means for competing companies to reach any understanding, expressed or implied, which tends to restrict competition, or in any way, to impair the ability of participating organizations to exercise independent business judgment regarding matters affecting competition or regulatory positions.
- Proprietary information shall not be disclosed by any participant during any industry engagement meeting or information exchange. In addition, no information of a secret or proprietary nature shall be made available to industry engagement participants.
- All proprietary information which may nonetheless be publicly disclosed by any participant during any industry engagement meeting or information exchange shall be deemed to have been disclosed on a non-confidential basis, without any restrictions on use by anyone, except that no valid copyright or patent right shall be deemed to have been waived by such disclosure.



2024

- Wildfire Safety Symposium – **APR. 10-11**
- Wildfire Risk Map – **JUL. 31**
- Wildfire Mitigation Strategies and Priorities – **AUG. 14**
- Future Operational Strategies and PSPS Enhancements – **AUG. 21**
- Metrics and Performance Tracking / WSS Content – **SEP. 5**
- Risk Model Deep Dive Sub-Group Mtgs 1 & 2 – **SEP. 26 & NOV. 6**
- Putting it All Together – **DEC. 12**
- Submit WSS to the PUC – **JAN. 10**

2025

- JUL. 16 Meeting 1** – Hawaiian Electric’s Wildfire Safety Strategy
- JUL. 30 Meeting 2** – Public Safety Power Shutoffs
- AUG. 13 Meeting 3** – Land Management
- SEP. 24 Meeting 4** – Ingress/Egress
- OCT. 15 Meeting 5** – Grid Hardening & Undergrounding

**Today**



# Agenda

- Welcome and Introductions
- Hawaiian Electric's Land Management Program
- Land Management Challenges
- What's Ahead
- Collaboration is Key
- Panel Discussion and Q&A



# Today's Speakers

- **Yumi Kam**, Wai'anāe Mountains Watershed Partnership
- **Sara Tekula**, Kula Community Watershed Alliance
- **LeeAnn Silva**, Queen Emma Land Company
- **Clay Trauernicht**, University of Hawai'i at Mānoa, College of Tropical Agriculture and Human Resilience

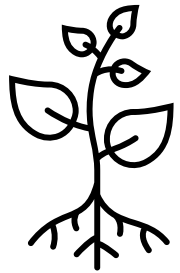


# Overview

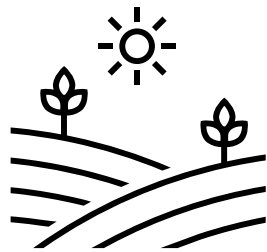
- Vegetation management is one of the ways Hawaiian Electric works to mitigate the risk of wildfires
- Vegetation management includes:
  - Regularly inspecting trees
  - Tree pruning
  - Tree removal
  - Brush control and removal
  - Ground clearing around higher-risk infrastructure



# Challenges



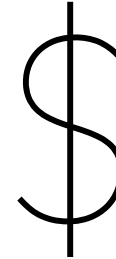
Fuels



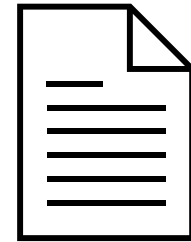
Agriculture



Invasive  
vegetation



Funding



Policy

# Vegetation management in wildfire risk areas

Operational Mitigation	Current 2025-2027 Targets
Inspection and Routine Vegetation Management in Risk Areas and Mid-Cycle Inspection for Hazard Trees	90% compliance of (1) 12-18 month routine for HWRA, MWRA as prioritized, (2) Mid-cycle on as-needed basis for hazard tree and radial clearance for specified areas, (3) Facility clearance substation and poles
Vegetation Management QA/QC	90% compliance of QA/QC of 25-30% of all work performed in HWRA and MWRA including Level 1 inspections, Radial Clearance and Hazard Tree Removal and consistently document all findings.



Grid hardening and redesign

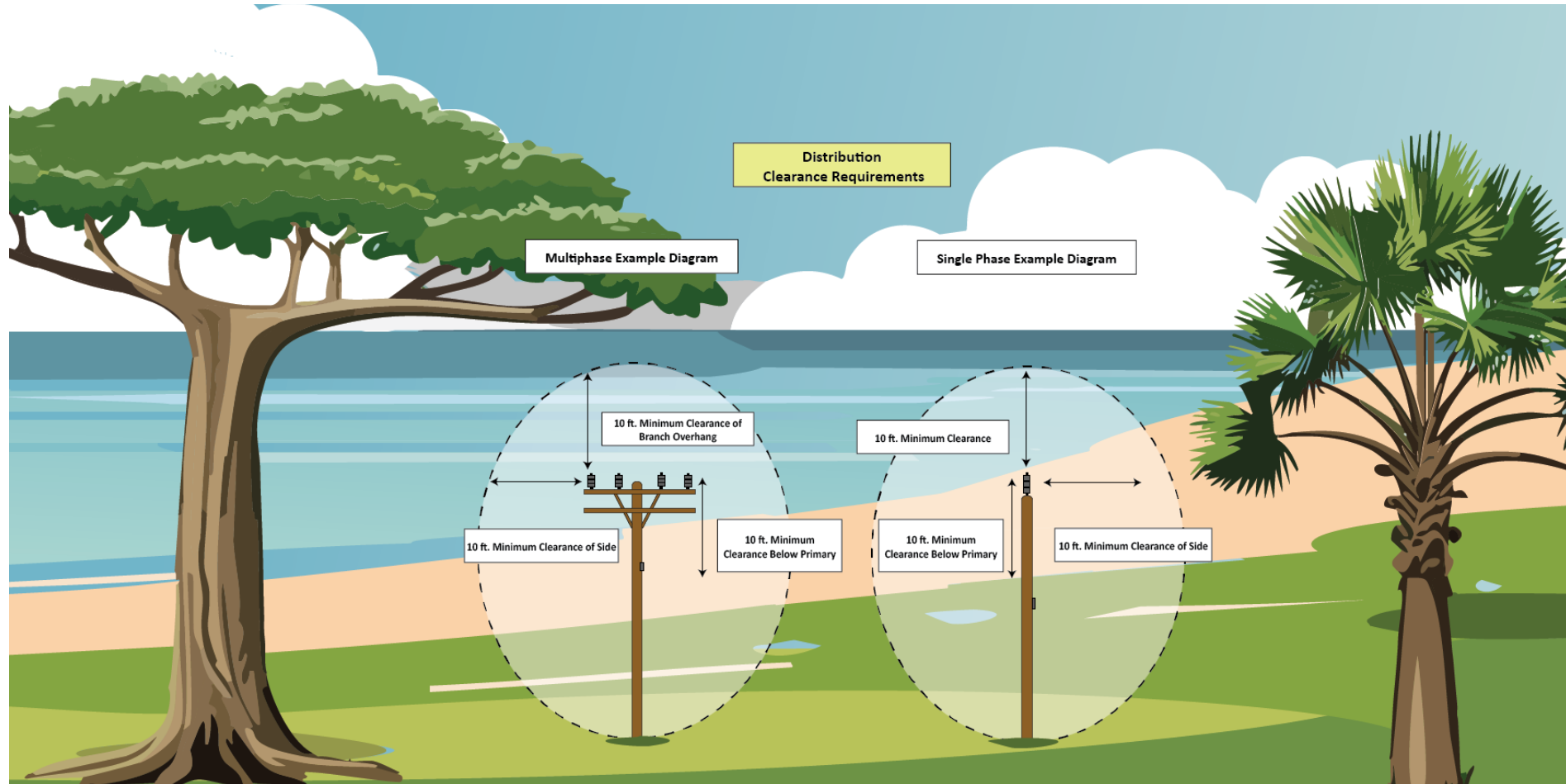
Situational awareness

Operational practices

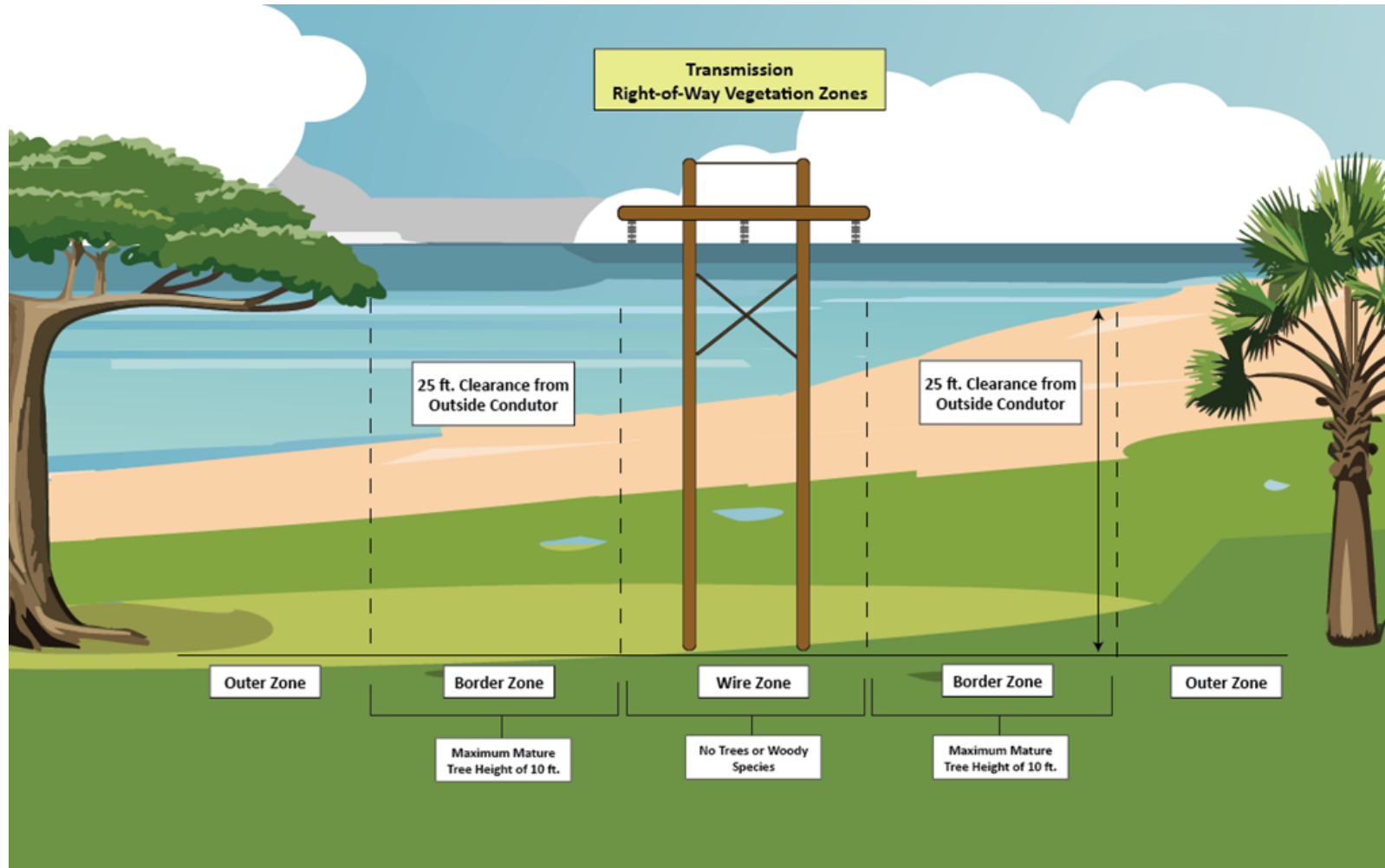
Stakeholder and community partnerships



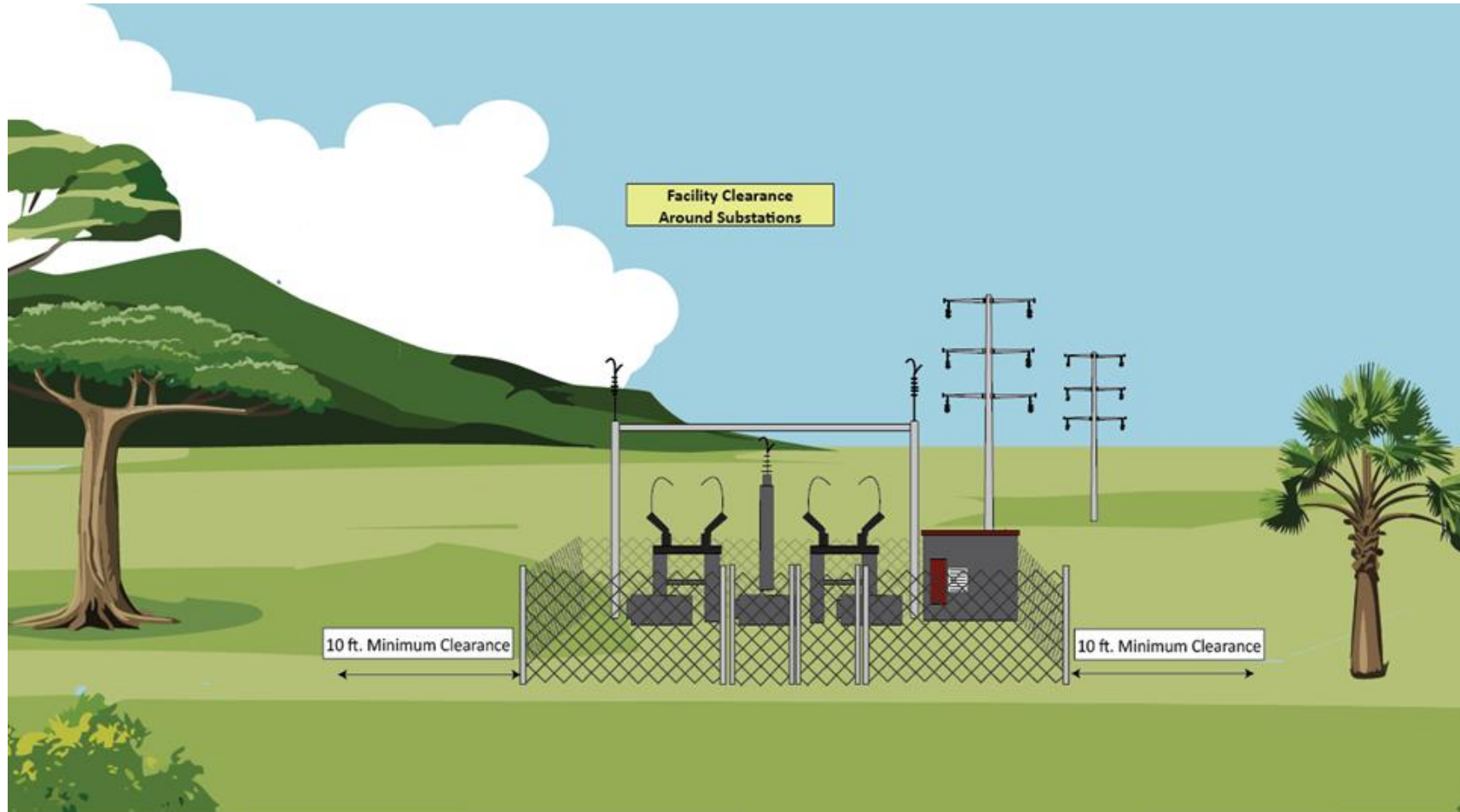
# Vegetation Distribution Clearance Requirements



# Vegetation Transmission Clearance Requirements



# Substation Facility Clearance



# Opportunities

- Partnerships to manage fuels
  - Leihoku Elementary
  - July 2025 goat grazing pilot



# O'ahu Customer and Community Engagement



Leihōkū Elementary firebreak pilot project, *before and after*



# Goat Grazing Pilot



# Policies – 2025 Legislative Session

- **SB 11 – Vegetation Management Near Utility Lines**
  - Requires the Department of Land and Natural Resources to create and annually update a wildfire hazard map.
  - Requires private and public property owners to trim grasses within certain proximities of public rights of way and utility lines, enforced by the State Fire Marshal as to State-owned land and the applicable county fire department as to privately owned land.
  - Authorizes electric utility companies to enter private or public property to trim or remove hazardous vegetation.
- **HCR 69 – Vegetation Management Working Group**
  - Requesting the State Fire Marshall to convene a vegetation management working group to study, evaluate and make recommendations for regulations that define property owner obligations on public and private property to mitigate wildfire risk.
  - Recommendation that define a line clearance tree trimmer and establish minimum safety standards.
- These policy initiatives did not pass in the 2025 Legislative Session, but we are hopeful the conversation around vegetation management will continue at future legislative sessions



# What's Ahead

Between 2025 and 2027, Hawaiian Electric plans to:

- Implement WSS vegetation management programs
- Create wider rights-of-way for vegetation clearing
- Increase partnerships with the state, counties, utilities, and landowners to complete work within easements and rights-of-way



# Mahalo for your time.

[HAWAIIANELECTRIC.COM/WILDFIRESAFETY](http://HAWAIIANELECTRIC.COM/WILDFIRESAFETY)

