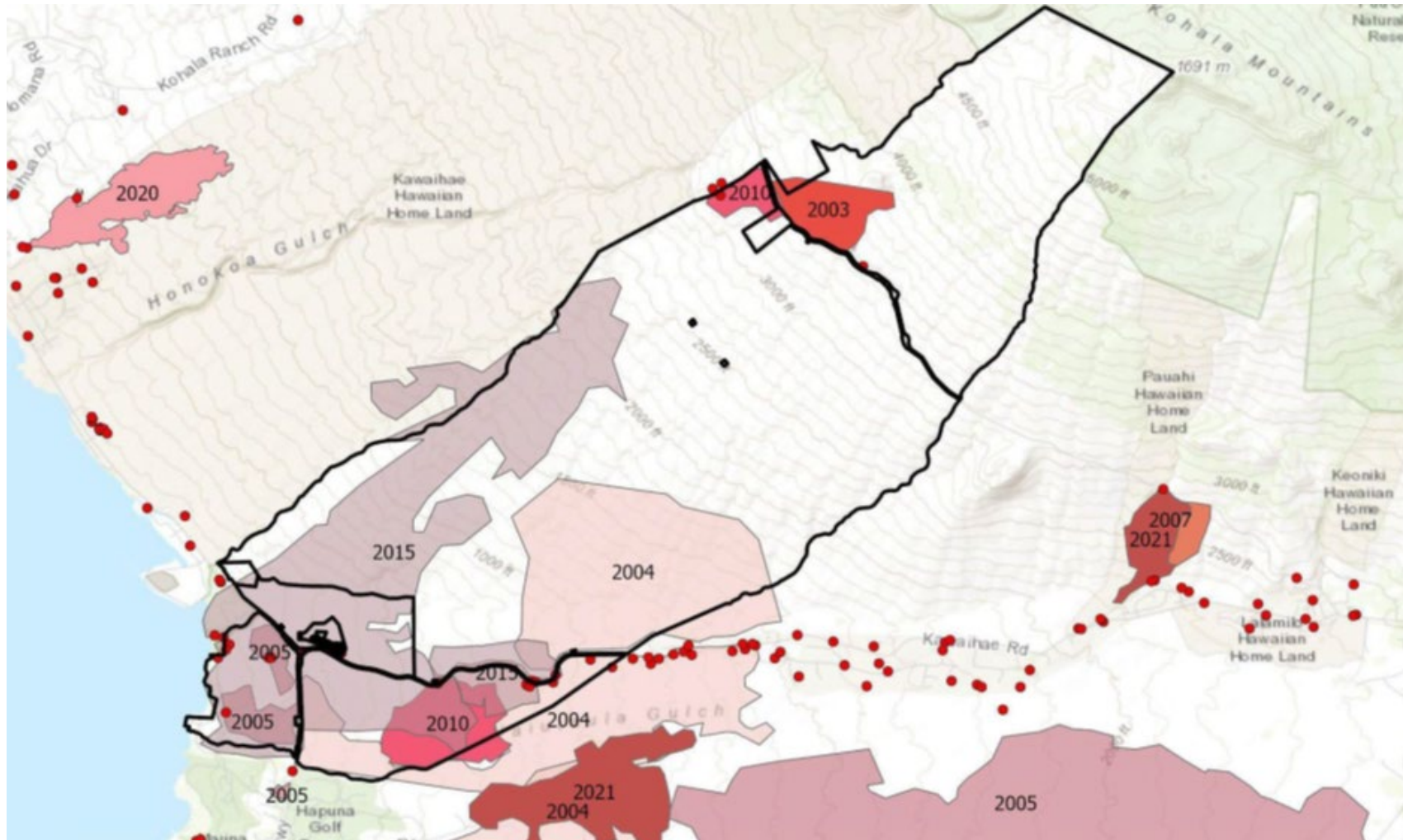


Kawaihae Hikina Wildfire Management



QUEEN EMMA
LAND COMPANY

Recent Wildfires 2005-2020



2015 Wildfire Aftermath



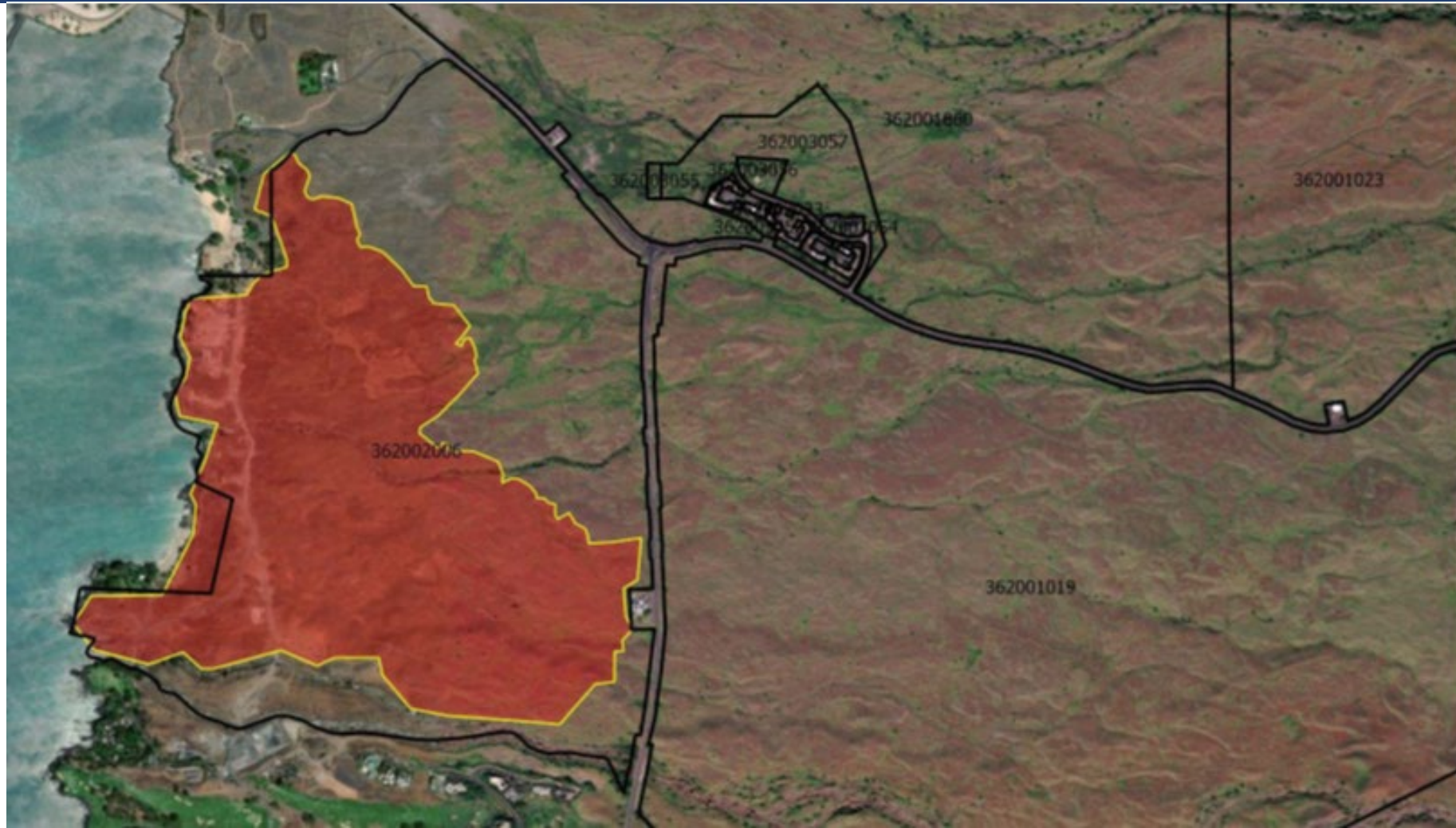


GREATER KAWAIHAE REGION WILDFIRE PLAN

A Guiding Framework and Integrated Pathway for Improved
Wildfire Readiness, Safety, and Recovery in the Greater
Kawaihae Region of Hawai'i Island, Hawai'i

September 2022

August 8, 2023 Fire



8/8/23 Brush Fire

- Approximately 210 acres of QEL land and two historic bridges burned
- Mauna Kea Resort golf maintenance facility and comfort station also burned
- Multiple fires within the resort



Google Earth before & after images



Post-Fire Damage Assessment

- Archaeologist
- Structural engineer
- Forestry/natural resources team
- BAERS team
- Arborist
- Lineal descendants





Pā mahi'ai, possible burials



House site

Post-fire priority actions

- Repair any damage from fire suppression activity
- Minimize risk to natural and cultural resources from erosion
- Recover ecosystem function and restore the landscape



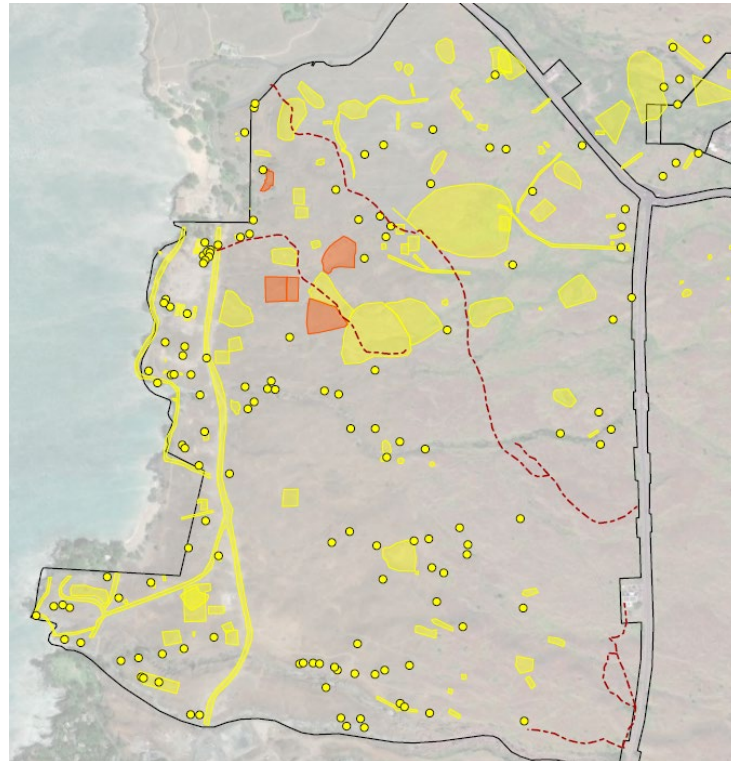
Repair/Rebuild Physical Improvements

- Public access bridges
- Fencelines
- Utility lines



Long-term objectives before the next fire

- Create fire adapted communities – shared kuleana
- Optimize safe and efficient emergency response
- Make landscapes resilient to wildfire
- Wildfire risk assessment and strategic plan

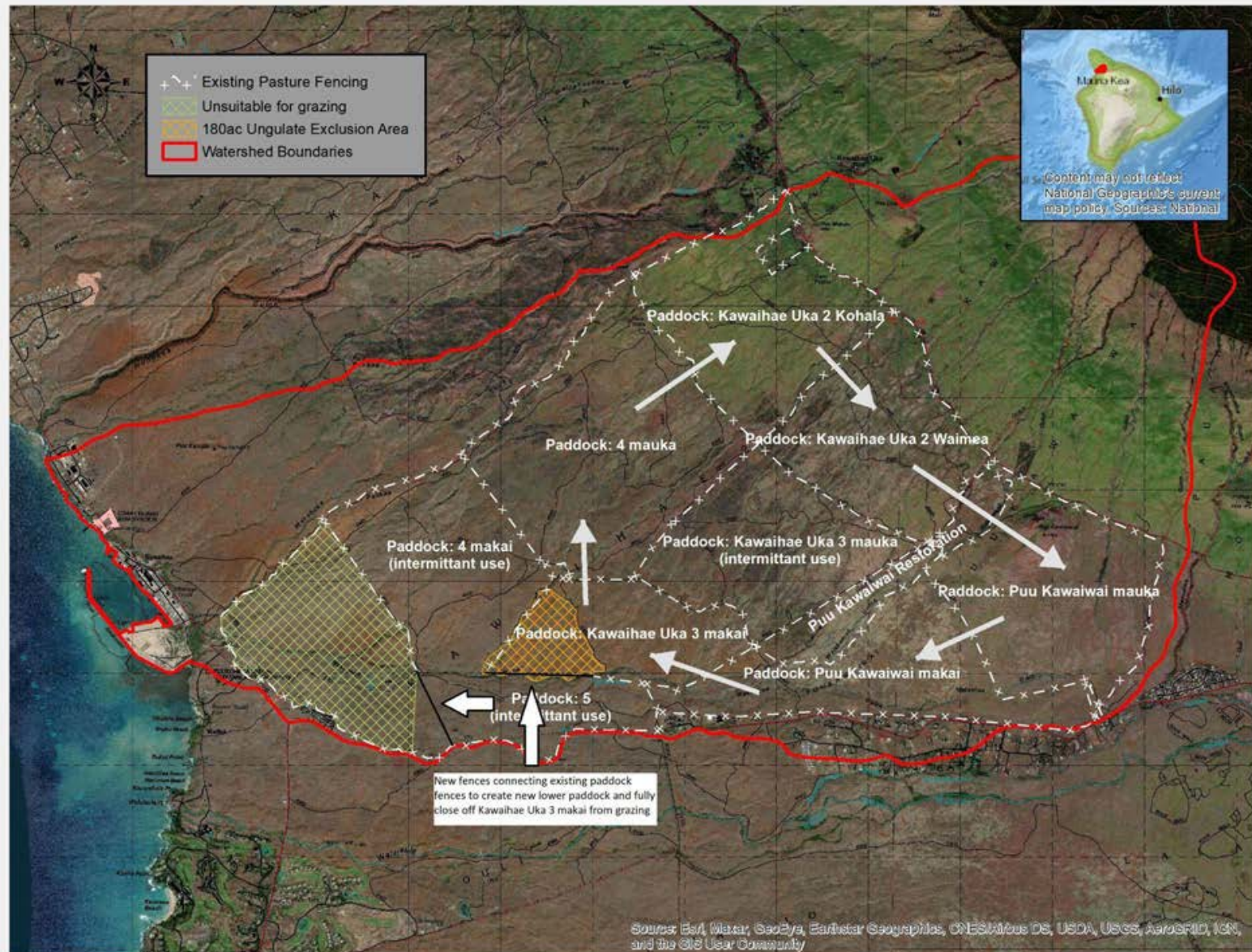


Fuel Breaks

- Ignition prevention on major corridors
- Protection of communities – homes and native plant enclosures
- Regular inspections and ongoing maintenance
- One size cannot fit all



Managed grazing





'A'ohe hana nui ke alu 'ia



QUEEN EMMA
LAND COMPANY