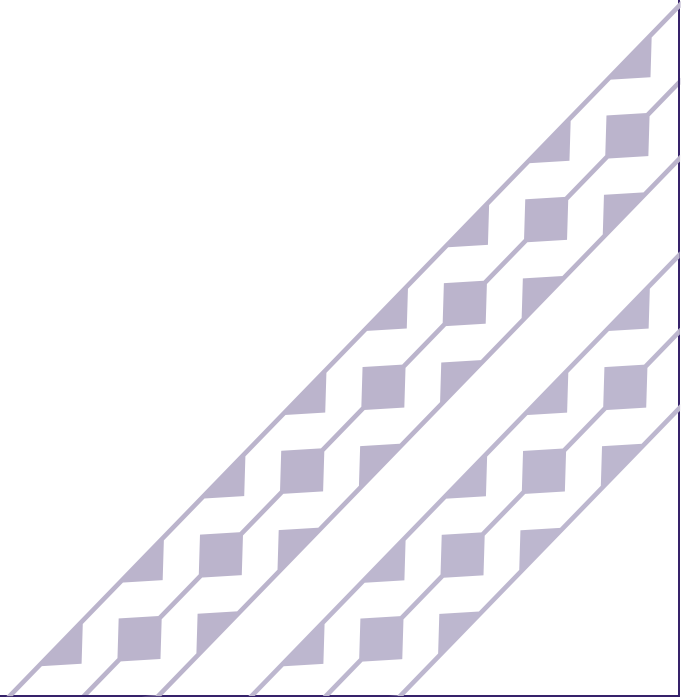




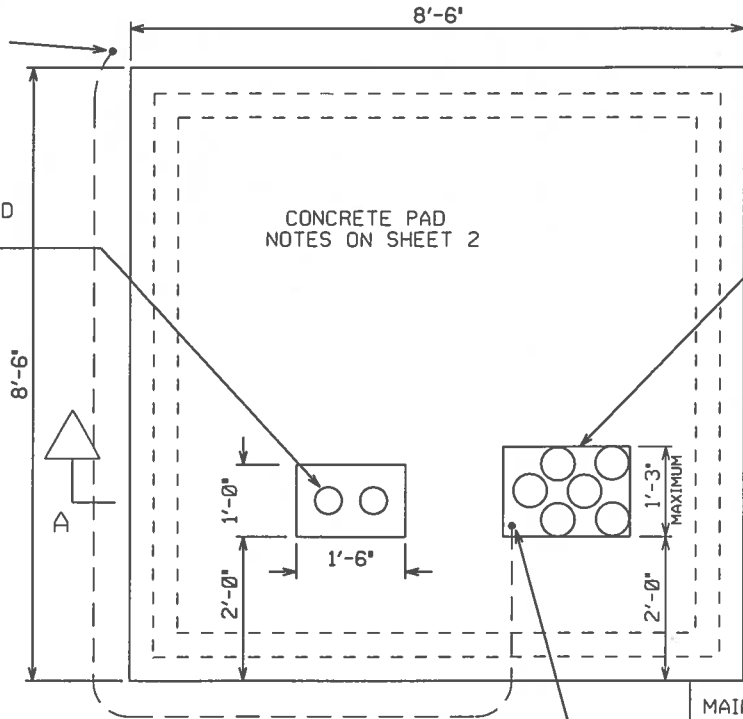
**Hawaiian
Electric**

The information found in this document are general guidelines that may be used to aid in the preparation of your service request proposal. Please be advised that depending on the specific needs and actual conditions of your project, Hawaiian Electric may require your design to comply with different specifications including specifications that include more stringent requirements than those included in these design specification guidelines. For further guidance and clarification on the actual specifications that will apply to your particular project, please refer to instructions issued by Hawaiian Electric's Planner or Engineer who is assigned to your particular (Project/Review Request/...). Additionally, please be advised that Hawaiian Electric reserves the right to require additional modifications to any approved design if it is determined during actual construction that additional modifications must be made to address certain field conditions that were not detected or Hawaiian Electric was unaware of during the design review process.



ADDITIONAL
 $\frac{5}{8}$ " x 8'-0" GRD. ROD
 (SEE NOTE 3)
 TOP OF ROD 12" BELOW
 FINAL GRADE

PRIMARY
 CONDUITS
 (2-4) ENCASED
 IN 3" CONC.
 JACKET.



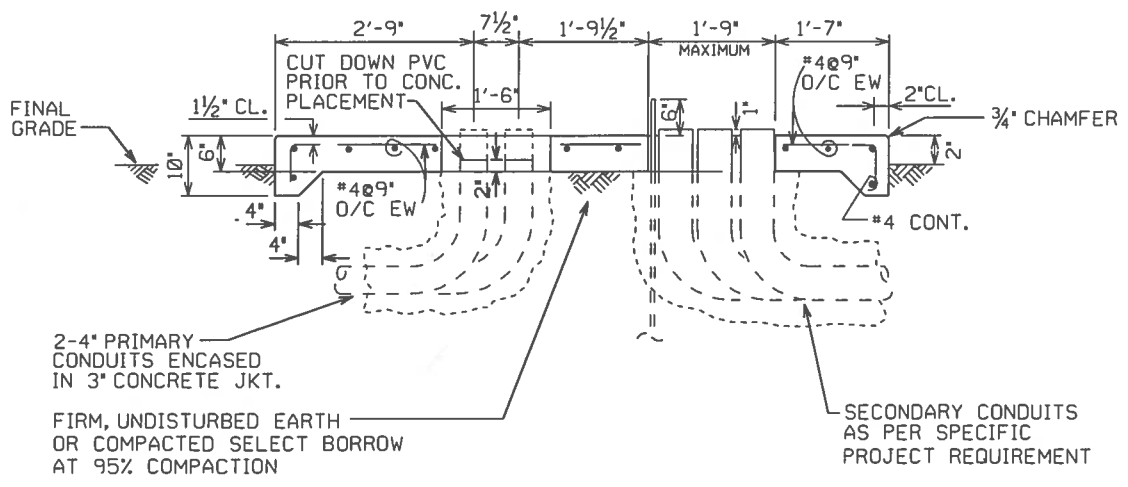
CUSTOMER TO
 TERMINATE SECONDARY
 CONDUITS IN THIS AREA.
 SECONDARY CONDUITS
 PER SPECIFIC PROJECT
 REQUIREMENTS

$\frac{5}{8}$ " x 10'-0" GRD. ROD
 FURNISHED BY HECO AND
 INSTALLED BY CONTRACTOR
 (SEE NOTE 3)

MAINTAIN AN 8'-0"
 CLEARANCE FROM
 FRONT EDGE OF PAD
 (SEE NOTE 7)

PLAN VIEW

SEE NOTES ON SHEET 2



SECTION "A-A"

| | | | | | | | | | | | | | | | | | | |
|----------|------|---------|----|----|----|----|----|----|----|----|----|----|----|----|-----|----|-------|-------|
| REVISION | DATE | INITIAL | RM | TN | RM | TN | RM | TN | RM | FK | CT | DH | FK | CT | WTM | FK | 10-04 | 06-02 |
| | | | | | | | | | | | | | | | | | | |

| | | | | |
|--------------------------------------------------------------|------------------------------------------------------------------|---------------------------------------------------------------------------------------|-----------------------------------------------|-------|
| DRAWN CT DESIGNED ST APPD HAS JR TN RDL VEC REDRAWN | SUPERSEDES ENGINEERING STANDARD HAWAIIAN ELECTRIC CD. INC. | CONCRETE PAD FOR 500 TO 750 KVA 3 PHASE PADMOUNTED TRANS. UG DUCTS & STRUCTURES | ORIGINAL JULY 1971 30-5010 SHEET 1 OF 2 | REV 7 |
|--------------------------------------------------------------|------------------------------------------------------------------|---------------------------------------------------------------------------------------|-----------------------------------------------|-------|

c:\users\ctonokaw\dgn\ug stds\pst305010.0107
 ctokaw
 04-MAY-2004 15:31

NOTES:

1. REFER TO STD. 30-5000 FOR LOCATIONS AND CLEARANCES.
2. REFER TO STD. 22-2005 FOR 3 PHASE PADMOUNTED TRANSFORMER REQUIREMENTS.
3. 5/8" DIAMETER x 10'-0" GROUND ROD (STOCK CODE 193457) FURNISHED BY HECO AND INSTALLED BY CUSTOMER. IF GROUND RESISTANCE IS MORE THAN 25 OHMS, INSTALL ADDITIONAL 5/8" DIAMETER x 8'-0" GROUND ROD (STOCK CODE 101527) AND CONNECT 4/0 BARE COPPER GROUND WIRE BETWEEN GROUND RODS. A MINIMUM OF 6'-0" SHALL BE MAINTAINED BETWEEN THE DRIVEN GROUND RODS. A SECOND GROUND ROD WILL PROBABLY BE REQUIRED WHEN SOIL RESISTIVITY IS GREATER THAN 67 OHM-METERS.
4. CONCRETE: 3000 PSI COMPRESSIVE STRENGTH IN 28 DAYS. MOISTURE CURE CONCRETE PAD A MINIMUM OF 7 DAYS. DO NOT INSTALL TRANSFORMER UNTIL CONCRETE COMPRESSIVE STRENGTH REACHES 1,500 PSI MINIMUM OR AFTER 14 DAYS.
5. REINFORCING: ASTM A615, GRADE 40 MINIMUM.
6. LOCATE, SECURE, AND CAP ALL CONDUITS BEFORE POURING PAD. TOP OF CONCRETE TO BE SMOOTH AND TRUE, WOOD-FLOAT FINISH, FREE OF DEFECTS, AS PER APPLICABLE CITY AND COUNTY SPECIFICATIONS. ROUND ALL EXPOSED EDGES TO 3/4" CHAMFER.
7. MAINTAIN A RELATIVELY LEVEL, MINIMUM CLEARANCE OF 2'-6" FROM THE SIDES OF THE PAD, 2'-0" FROM THE BACK OF PAD, AND 8'-0" IN FRONT OF PAD. EXTEND CONCRETE PAD AN ADDITIONAL 8'-0" IN FRONT IF LOCATED IN PLANTING AREA.

REVISION
DATE INITIAL
10-04
CJ WTM

| | | | |
|----------------------------------------------------|------------------|--------------------------------------------------------------------------------------------|--------------------|
| DRAWN CT | DESIGNED RAN WTM | APPD WTM FK | REDRAWN |
| SUPERSEDES | | CONCRETE PAD FOR 500 - 750 KVA 3 PHASE PADMOUNTED TRANSFORMERS UG DUCTS & STRUCTURES | ORIGINAL JUNE 2002 |
| ENGINEERING STANDARD HAWAIIAN ELECTRIC CD. INC. | | | 30-5010 |
| | | | SHEET 2 of 2 |