



# The Integrated Grid Planning Process

Building the Plan to Reach 100% Renewable Energy by 2045



Hawaiian Electric  
Maui Electric  
Hawai'i Electric Light

The Integrated Grid Planning (IGP) process is just like creating a plan for a home renovation

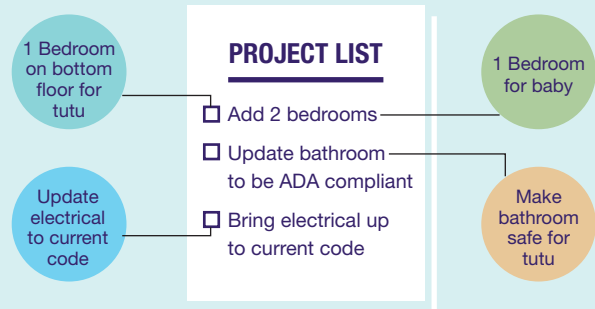


## 1 Data Collection



**RENOVATION:** Homeowner talks with family to determine what's needed.  
**IGP:** Hawaiian Electric speaks with community and stakeholders to gather information and forecast data.

## 2 Analysis



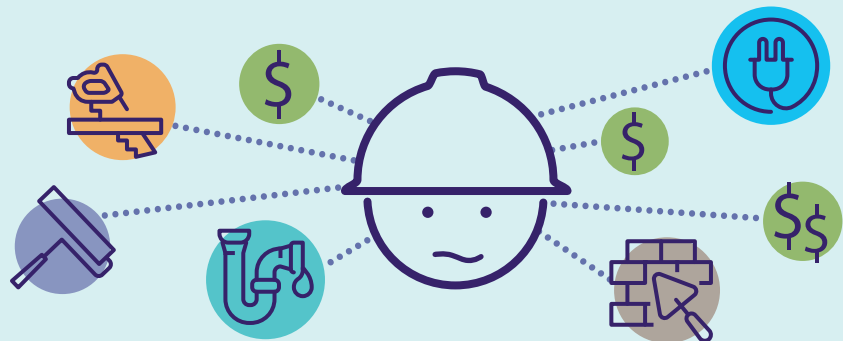
**RENOVATION:** Homeowner creates a list of projects to be done to meet household needs.  
**IGP:** Hawaiian Electric analyzes collected data and forecasts to determine energy needs.

## 3 Define & Refine Plan

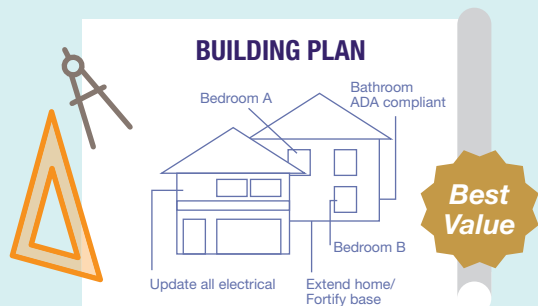


**RENOVATION:** Homeowner and general contractor gather pertinent information and get price quotes from subcontractors such as carpenters and electricians.

**IGP:** Hawaiian Electric gathers information from providers through a Request for Information (RFI) to define and refine the plan, then issues preliminary Request for Proposals for solutions with realistic cost estimates and data.

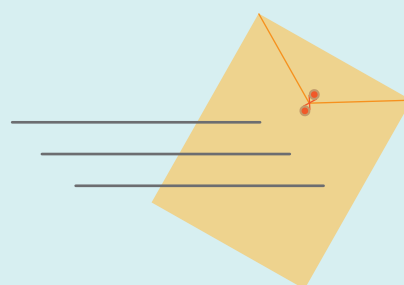


## 4 Optimize Plan



**RENOVATION:** A building plan is designed for long-term value.  
**IGP:** Hawaiian Electric determines optimal solutions to maximize customer value and complete plan in shorter timeline.

## 5 Commission Review



**RENOVATION:** Homeowner submits building plans to City & County for permit approval.  
**IGP:** Hawaiian Electric presents the final plan to the Public Utilities Commission for review.