
Getting started

Access **My Energy Use** by logging into our Online Customer Service Center and clicking the “My Energy Use” button.

If you do not have an online account, register for one at www.hawaiianelectric.com/myaccount



Learn more

For more information about **My Energy Use** web portal and advanced meter upgrades, visit www.hawaiianelectric.com/advancedmeters

Or, call us:

O‘ahu:

(808) 548-7311

Maui:

(808) 871-9777

Moloka‘i / Lana‘i (Toll Free):

1-877-871-8461

Hilo:

(808) 969-6999

Kona:

(808) 329-3584

Waimea:

(808) 885-4605

Helping you manage your electric bill

Introducing **My Energy Use**, your personal web portal



**Hawaiian
Electric**

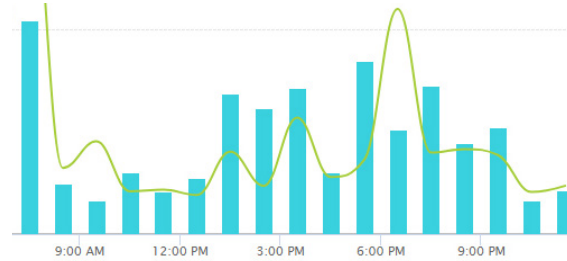
Make informed energy choices

The **My Energy Use** Use web portal can help you make smarter energy decisions and eliminate surprises by displaying your usage data throughout each day, allowing you to make cost-saving adjustments, set up alert notifications and more.

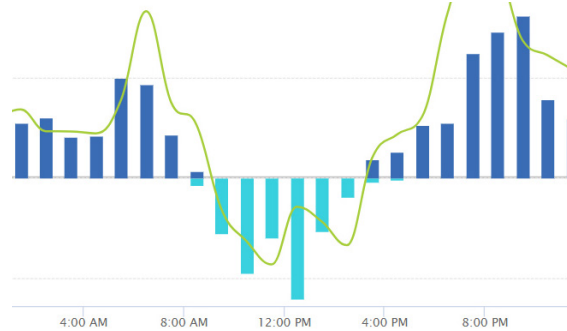
FEATURES:

- View energy consumption and generation in 15-minute intervals
- Establish threshold notifications alerts
- Compare usage data to previous periods
- Add markers to track important events
- Download usage data in Green Button or CSV format
- Share data with secure secondary user access

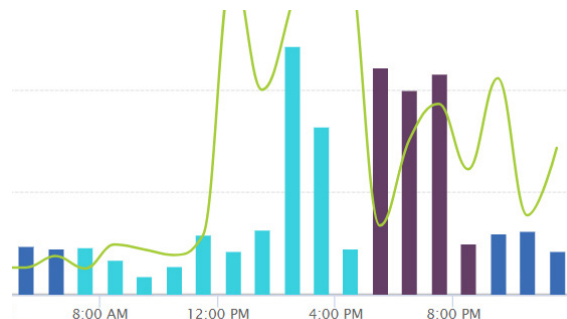
Monitor your usage



View electricity consumption with accuracy in up to 15-minute intervals.



Monitor generation for installed rooftop solar systems.



Time-of-Use (TOU) customers can monitor On-, Mid-, and Off-Peak usage, to help determine cost-saving adjustments.

Make comparisons



Comparison

Last Week	▼
None	
Average Temperature	
Last Week	
Bill Period Average	

Compare current usage to previous data or outside temperatures to determine changes in your consumption or generation.

Share your usage



Download Usage Data

Format:

Service Type:

Meters: #MP700000000g (Generation)

Interval:

Start Date:

End Date:

Choose Columns

Select columns by checking the box. Drag to change column order.

- Read Date
- Account Number
- Name
- Meter
- Location
- Address
- kWh

Row Sort Order

- Drag to prioritize sort order. Click to choose ascending or descending.
- Read Date ↑
 - kWh ↑

Easily download usage data in CSV or Green Button format for sharing with third parties.

Utilize the Secondary User Access feature to grant portal login access to selected individuals.

Sign up for alerts



Communication Preferences

Add Notification		
Type	Description	Enabled Edit/Delete
System	I agree to receive emails from Hawaiian Electric Company about programs, offers, or promotions that I may be eligible for.	<input type="checkbox"/> Enabled Edit/Delete
Threshold	Send me Threshold messages for All Electric Meters when Daily Consumption is Over 100000 kWh. at sample@example.com	<input type="checkbox"/> Enabled Edit/Delete

Sign up for energy usage alerts to receive notifications when you use more electricity than you anticipate.