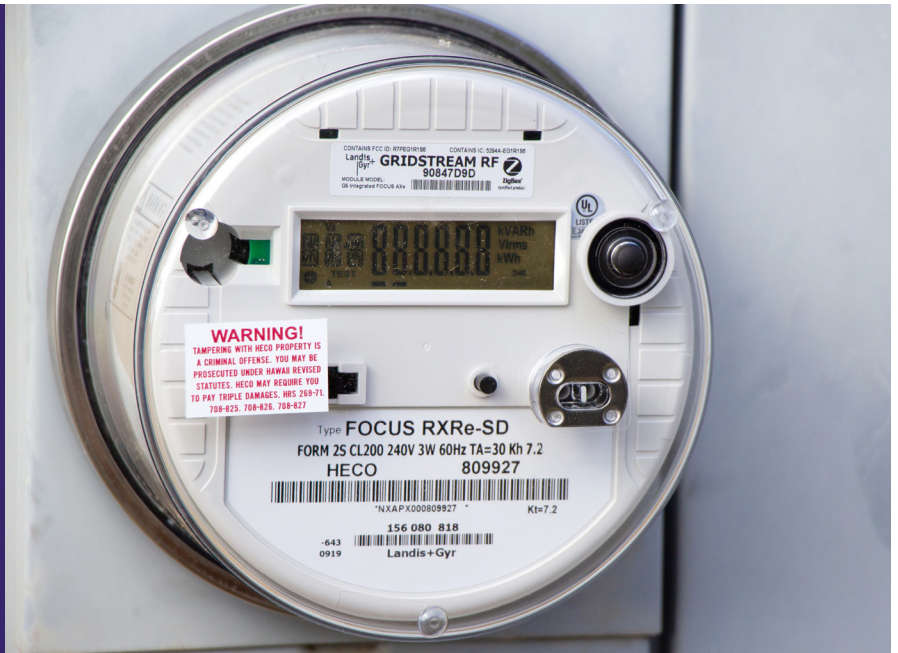




Hawaiian Electric

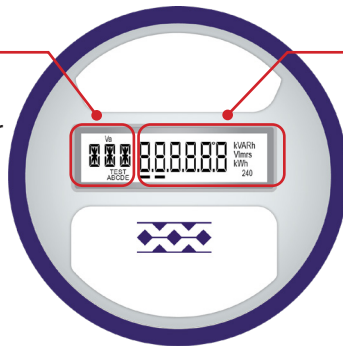
How to read your new Hawaiian Electric advanced meter



Hawaiian Electric is upgrading old electric meters to new advanced meters across our service areas. The new meters are digital, secured and easier to read. The clock dials have been replaced with an easy-to-read digital display. Once you received your new advanced meter, learn how it works to measure your energy usage and potentially save money. Here's how to read it.

1

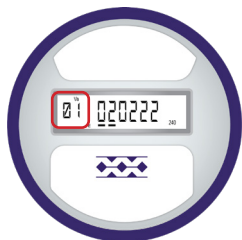
Register (Display) number



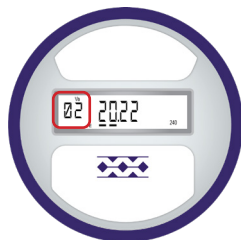
2

Meter reading or value (date, time)

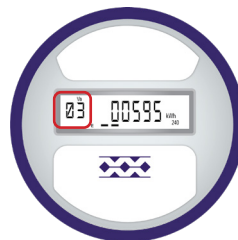
Registers that will be shown and in the order they are displayed:



01 - The Current Date



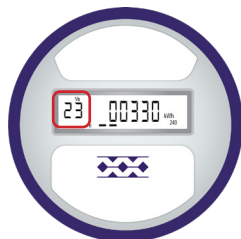
02 - Time (24-hour format)



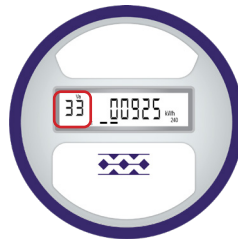
03 - Delivered kWh



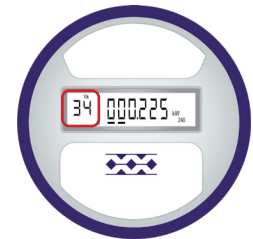
04 - Demand reading kW



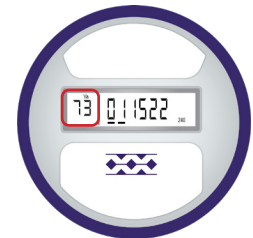
23 - Net kWh (the difference between received and delivered)



33 - Received kWh



34 - Received Demand kW



73 - Date that demand was last reset



Segment Check

When all the Liquid Crystal Display or LCD segments are lit up, this shows that the display is properly working. If any of the LCD segments are missing, then the display is failing, and the meter should be changed out.

hawaiianelectric.com/advancedmeters