



FILED

September 29, 2017

2017 SEP 29 P 4 16

The Honorable Chair and Members
of the Hawai'i Public Utilities Commission
Kekuanao'a Building, First Floor
465 South King Street
Honolulu, Hawai'i 96813

PUBLIC UTILITIES
COMMISSION

Dear Commissioners:

Subject: Maui Electric Energy Cost Adjustment Factor for October 2017 (REVISED 9/29/2017)

Maui Electric Company, Limited ("Maui Electric" or "Company") hereby resubmits its October 2017 Energy Cost Adjustment filing to correct the calculations of the typical residential bills for September 2017 and October 2017. There are no changes to the energy cost adjustment factors for September 2017 and October 2017 as filed on August 29, 2017 and September 27, 2017, respectively.

The Company's Energy Cost Adjustment factor for our Maui Division for October 2017 is -7.391 cents per kilowatt-hour ("kWh"), an increase of 1.887 cents per kWh from last month. A residential customer consuming 500 kWh of electricity will be paying \$147.64, an increase of \$9.45 compared to rates effective September 1, 2017. The increase in the typical residential bill is due to the increase in the Energy Cost Adjustment factor (+\$9.44) and the increase in the Purchased Power Adjustment Clause rate (+\$0.01).

The Company's Maui Division fuel composite cost of generation, central station and other increased 158.10 cents per million BTU to 1,215.14 cents per million BTU. The composite cost of DG energy is 0.00 cents per kWh. The composite cost of purchased energy decreased 0.097 cents per kWh to 18.050 cents per kWh.

The Energy Cost Adjustment factor for our Lāna'i Division for October 2017 is -10.059 cents per kWh, an increase of 0.330 cents per kWh from last month. A residential customer consuming 400 kWh of electricity will be paying \$146.72, an increase of \$1.32 compared to rates effective September 1, 2017. The increase in the typical residential bill is due to the increase in the Energy Cost Adjustment factor.

The Company's Lāna'i Division fuel composite cost of generation, central station and other increased 30.87 cents per million BTU to 1,744.93 cents per million BTU. The composite cost of DG energy is 0.00 cents per kWh. The composite cost of purchased energy is 27.000 cents per kWh.

The Honorable Chair and Members
of the Hawai'i Public Utilities Commission
September 29, 2017
Page 2

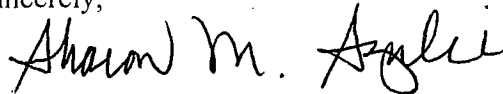
The Energy Cost Adjustment factor for our Moloka'i Division for October 2017 is -9.093 cents per kWh, an increase of 1.599 cents per kWh from last month. A residential customer consuming 400 kWh of electricity will be paying \$136.35, an increase of \$6.40 compared to rates effective September 1, 2017. The increase in the typical residential bill is due to the increase in the Energy Cost Adjustment factor.

The Company's Moloka'i Division fuel composite cost of generation, central station and other increased 130.79 cents per million BTU to 1,398.62 cents per million BTU. The composite cost of DG energy is 0.00 cents per kWh. The composite cost of purchased energy is 21.80 cents per kWh.

The attached sheets set forth the fuel adjustment in cents per kWh for each rate schedule that is applicable for pro rata use beginning October 1, 2017.

For the Commission's convenience, Maui Electric is refiling all of the attachments included in the September 27, 2017 filing. The revised attachments are notated with "Revised 9/29/2017" in the headers; the other attachments are unchanged.

Sincerely,



Sharon M. Suzuki
President

Attachments

cc: Division of Consumer Advocacy

**MAUI ELECTRIC COMPANY, LTD.
MAUI DIVISION**

ENERGY COST ADJUSTMENT FACTOR

	EFFECTIVE DATES		<u>Change</u>
	<u>09/01/2017</u>	<u>10/01/2017</u>	
<u>COMPOSITE COSTS</u>			
Generation, Central Station & Other, ¢/mbtu	1,057.04	1,215.14	158.10
DG Energy, ¢/kWh	0.00	0.00	0.000
Purchased Energy, ¢/kWh	18.147	18.050	(0.097)
<u>Residential Schedule "R"</u>			
Energy Cost Adjustment, ¢/kWh	(9.278)	(7.391)	1.887
<u>Others - "G,H,P,F"</u>			
Energy Cost Adjustment, ¢/kWh	(9.278)	(7.391)	1.887
<u>Residential Customer with</u>			
500 KWH Consumption, \$/Bill	138.19 ¹	147.64 ¹	9.45
600 KWH Consumption, \$/Bill	165.47 ¹	176.80 ¹	11.33

¹ Reflects correction to the typical residential bill calculation.

Supersedes Sheet Effective:

September 1, 2017

MAUI ELECTRIC COMPANY, LTD.
MAUI DIVISION
ENERGY COST ADJUSTMENT (ECA) FILING

ENERGY COST ADJUSTMENT (ECA) FILING - October 1, 2017 (page 1 of 2)

Line		
1	Effective Date	October 1, 2017
2	Supercedes Factors of	September 1, 2017

GENERATION COMPONENT

CENTRAL STATION					DG ENERGY COMPONENT			
FUEL PRICES, ¢/mmbtu								
3	Industrial			795.00				
4	Diesel			1,359.55				
5	Other							
BTU MIX, %								
6	Industrial			25.58%	23	COMPOSITE COST OF DG		
7	Diesel			74.42%		ENERGY, ¢/kWh	0.000	
8	Other			0.00%	24	% Input to System kWh Mix	0.00%	
				100.00%				
9	COMPOSITE COST OF GENERATION, CENTRAL STATION + OTHER ¢/mmbtu (Lines (3 x 6) + (4 x 7) + (5 x 8))			1,215.14	25	WEIGHTED COMPOSITE DG ENERGY COST, ¢/kWh (Lines 23 x 24)	-	
10	% Input to System kWh Mix			74.32%	26	BASE DG ENERGY COMP COST	0.000	
	EFFICIENCY FACTOR, mmbtu/kWh				27	Base % Input to System kWh Mix	0.01	
	(A)	(B)	(C)	(D)	28	WEIGHTED BASE DG ENERGY COST, ¢/kWh (Line 26 x 27)	0.00000	
			Percent of		29	Cost Less Base (Line 25 - 28)	0.00000	
			Centrl Stn +		30	Loss Factor	1.063	
	<u>Fuel Type</u>	<u>Eff Factor</u>	<u>Other</u>	<u>Weighted</u>	31	Revenue Tax Req Multiplier	1.0975	
		<u>mmbtu/kwh</u>		<u>Eff Factor</u>	32	DG FACTOR, ¢/kWh (Line 29 x 30 x 31)	0.00000	
11	Industrial	0.015126	18.06	0.002732				
12	Diesel	0.010026	81.94	0.008215				
13	Other	0.010951	0.00	-				
	(Lines 11, 12, 13): Col(B) x Col(C) = Col(D)							
14	Weighted Efficiency Factor, mmbtu/kWh [(lines 11(D) + 12(D) + 13(D))]			0.010947				
15	WEIGHTED COMPOSITE CENTRAL STATION + OTHER GENERATION COST, ¢/kWh (lines (9 x 10 x 14))			9.88615				
16	BASE CENTRAL STATION + OTHER GENERATION COST, ¢/mmbtu			2,019.39				
17	Base % Input to Sys kWh Mix			78.09				
18	Efficiency Factor, mmbtu/kwh			0.010951				
19	WEIGHTED BASE CENTRAL STATION + OTHER GENERATION COST ¢/kWh (lines (16 x 17 x 18))			17.26909				
20	COST LESS BASE (line(15 - 19))			(7.38294)				
21	Revenue Tax Req Multiplier			1.0975				
22	CENTRAL STATION + OTHER GENERATION FACTOR, ¢/kWh (line (20 x 21))			(8.10278)				
					SUMMARY OF			
						TOTAL GENERATION FACTOR, ¢/kWh		
					33	CNTRL STN + OTHER (line 22)	(8.10278)	
					34	DG (line 32)	-	
					35	TOTAL GENERATION FACTOR, ¢/kWh (lines 33 + 34)	(8.10278)	

MAUI ELECTRIC COMPANY, LTD.
MAUI DIVISION
ENERGY COST ADJUSTMENT (ECA) FILING

ENERGY COST ADJUSTMENT (ECA) FILING - October 1, 2017 (page 2 of 2)

<u>Line</u>		
1	Effective Date	October 1, 2017
2	Supercedes Factors of	September 1, 2017

<u>Line</u>	<u>PURCHASED ENERGY COMPONENT</u>		
	PURCHASED ENERGY PRICE, ¢/kWh		
36			
37			
38			
39			
40	Kaheawa Wind I	- On Peak	13.572
41		- Off Peak	12.749
42	Kaheawa Wind II		19.245
43	Sempra Wind		21.546
44	Hydro & Other	- On Peak	12.636
45		- Off Peak	11.863
46	FIT		20.397
	PURCHASED ENERGY KWH MIX, %		
47			
48			
49			
50			
51	Kaheawa Wind I	- On Peak	17.82%
52		- Off Peak	16.36%
53	Kaheawa Wind II	- On Peak	24.86%
54	Sempra Wind	- On Peak	37.80%
55	Hydro & Other	- On Peak	0.20%
56		- Off Peak	0.14%
57	FIT		2.82%
			<u>100.00%</u>
58	COMPOSITE COST OF PURCHASED ENERGY, ¢/kWh		18.050
	(Lines (36 x 49) + (37 x 50) + (38 x 51) + (39 x 52) + (40 x 53) + (41 x 54) + (42 x 55) + (43 x 54) + (44 x 55) + (45 x 56) + (46 x 57))		
59	% Input to System kWh Mix		25.68%
60	WEIGHTED COMPOSITE PURCHASED ENERGY COST, ¢/kWh (lines (58 x 59))		4.63524
61	BASE PURCHASED ENERGY COMPOSITE COST, ¢/kWh		15.847
62	Base % Input to Sys kWh Mix		21.90
63	WEIGHTED BASE PURCHASED ENERGY COST, ¢/kWh (lines (61 x 62))		3.47049
64	COST LESS BASE (lines (60 - 63))		1.16475
65	Loss Factor		1.063
66	Revenue Tax Req Multiplier		1.0975
67	PURCHASED ENERGY FACTOR, ¢/kWh (lines (64 x 65 x 66))		1.35885

<u>Line</u>	<u>SYSTEM COMPOSITE CALCULATIONS</u>	
68	GENERATION AND PURCHASED ENERGY FACTOR, ¢/kWh (lines (35 + 67))	(6.74393)
69	ADJUSTMENT, ¢/kWh	
70	ECA Reconciliation Adjustment	(0.647)
71	ECA FACTOR, ¢/kWh (lines (68 + 69 + 70))	(7.391)

**MAUI ELECTRIC COMPANY, LTD.
MAUI DIVISION**

Fuel Oil Inventory Prices for October 2017

<u>TYPE OF OIL BURNED</u>	<u>PRICES \$/BBL</u>	<u>CONVERSION FACTORS</u>		<u>PRICES ¢/MBTU</u>
INDUSTRIAL	50.0852	6.30	MBTU/BBL	795.00
DIESEL/ULSD	79.6153	5.86	MBTU/BBL	1,359.55

**Maui Electric Company, Ltd.
Maui Division**

Month End Fuel Oil Estimate

<u>Kahului</u>	<u>Barrels</u>	<u>MBTU</u>	<u>(\$)</u>
9/20/2017	31,763.98	199,656.90	1,524,313.30
Estimated Use	9,885.69	62,175.94	424,389.93
Estimated Received	16,000.00	100,800.00	797,218.14
Estimated Additional	0.00	0.00	0.00
Estimated End	<u>37,878.29</u>	<u>238,280.96</u>	<u>1,897,141.51</u>

Next month's expense (\$/bbl) = \$ 50.0852

<u>Maalaea</u>	<u>Barrels</u>	<u>MBTU</u>	<u>(\$)</u>
9/20/2017	92,016.37	538,849.20	6,787,779.94
Estimated Use	29,648.54	173,622.27	2,291,354.53
Estimated Received	30,300.00	177,437.24	2,804,369.80
Estimated Additional	7,039.16	41,249.49	637,403.68
Estimated End	<u>99,706.99</u>	<u>583,913.66</u>	<u>7,938,198.89</u>

Next month's expense (\$/bbl) = \$ 79.6153

**MAUI ELECTRIC COMPANY, LTD.
MAUI DIVISION**

Contract Prices effective September 1, 2017

<u>TYPE OF OIL BURNED</u>	<u>\$/BBL</u>	<u>¢/MBTU</u>
INDUSTRIAL		
Tax *	3.1449	49.92
Ocean Transportation	1.6931	26.11
Land Transportation	0.0000	0.00
Storage	0.0000	0.00
Wharfage	0.2900	4.60
DIESEL		
Tax *	4.9154	83.88
Ocean Transportation	1.6931	28.07
Land Transportation	0.8817	15.05
Storage	3.0781	52.53
Wharfage	0.2900	4.95

* Tax includes HGET, Hawaii Use Tax, Liquid Fuel Tax, LUST tax, Environmental Response Tax, Customs Duty Fee, and Fed Oil Spill Recovery Fee

Note: Since these components are not accounted for separately in inventory, contract prices for the current month are being provided. Contract prices are considered accurate pending actual delivery of the fuel.

Reference: Decision and Order No. 16134, Docket No. 96-0040.

**MAUI ELECTRIC COMPANY, LTD.
MAUI DIVISION**

PURCHASED POWER PRICE CALCULATIONS

KAHEAWA WIND POWER ENERGY RATE:

Kaheawa Wind - On Peak, ¢/kWh	13.572
- Off Peak, ¢/kWh	12.749

Kaheawa Wind Energy Rate Calculations:

Percent of Energy Payment Rate:

Fixed energy payment rate	70%
Flat payment rate	<u>30%</u>
	<u>100%</u>

Fixed Energy Payment Rate (Table D-1) for 2017:

On-peak, ¢/kwh	9.960
Off-peak, ¢/kwh	8.784

Flat Payment Rate Per Docket No. 2011-0192 D&O 30331:

On-peak, ¢/kwh	22.000
Off-peak, ¢/kwh	22.000

On-Peak Rate = $9.960 \text{ ¢/kwh} \times 0.7 + 22.000 \text{ ¢/kwh} \times 0.3 = 13.572 \text{ ¢/kwh}$

Off-Peak Rate = $8.784 \text{ ¢/kwh} \times 0.7 + 22.000 \text{ ¢/kwh} \times 0.3 = 12.7488 \text{ ¢/kwh}$

MAUI ELECTRIC COMPANY, LTD.
Maui Division
ECA Reconciliation Adjustment
October 2017

1. Amount to be Refunded	(\$1,679,500)
2. Monthly amount (1 / 3 X Line 1)	(\$559,833)
3. Revenue Tax Divisor	0.91115
4. Total (Line 2 / Line 3)	(\$614,425)
5. Estimated Sales (October 2017)	95,026 mwh
6. Adjustment (Line 4 ÷ Line 5)	(0.647) ¢/kwh

**MAUI ELECTRIC COMPANY, LTD.
MAUI DIVISION
2017 Cumulative Reconciliation Balance**

<u>Month</u>	<u>(1) YTD FOA Reconciliation</u>	<u>Qtr</u>	<u>(2) FOA Rec Adjust Variance</u>	<u>(3) FOA Rec Less Variance</u>	<u>(4) Try to Collect</u>	<u>(5) Actual Collect</u>	<u>(6) Month-end Cumulative Balance</u>
December '16					(340,033)	(338,730)	359,058
January '17					(340,033)	(313,303)	45,755
February	1,068,200	(4)	19,017	1,049,183	(356,067)	(333,496)	761,442
March					(356,067)	(353,056)	408,386
April					(356,067)	(362,325)	46,061
May	214,700	(1)	52,312	162,388	(71,567)	(71,347)	137,102
June					(71,567)	(72,876)	64,226
July					(71,567)	(74,042)	(9,816)
August	1,679,500	(2)	(7,347)	1,686,847	(559,833)	(569,839)	1,107,192
September					(559,833)		
October					(559,833)		

NOTES:

- Col(1): Quarterly FOA reconciliation amounts. (Refer to Attachment 5)
A positive number is an over-collection. A negative number is an under-collection.
- Col(2): FOA reconciliation adjustment variance accumulated during the last three months, starting with the fourth prior month; the difference between the estimated recorded sales used to derive the \$/kwh adjustment and the actual recorded sales.
(Col(5) - Col(4))
- Col(3): FOA reconciliation generated in the current quarter. The YTD FOA reconciliation difference minus the adjustment variance. Col(1) - Col(2)
- Col(4): Amount that the FOA reconciliation adjustment is trying to collect. (Col(1) * 1/3)
- Col(5): Actual collected amount. (recorded sales * \$/kwh adjustment/1.09751)
- Col(6): Cumulative balance of the FOA reconciliation (Previous balance + Col(3) + Col(5))

Maui Electric Company, Ltd.
Maui Division
Calculations of the Average Residential Customer Bill

	Rate		Charge (\$) at 500 Kwh			
	09/01/17	10/01/17	09/01/17	10/01/17	Difference	
Base Rates	effective date:	08/01/13	08/01/13			
Base Fuel/Energy Charge	¢/kWh	23.0016	23.0016	115.01	115.01	0.00
Non-fuel Fuel Energy Charge						
First 350 kWhr per month	¢/kWh	9.3393	9.3393	32.69	32.69	0.00
Next 850 kWhr per month	¢/kWh	11.5993	11.5993	17.40	17.40	0.00
Customer Charge	\$	8.50	8.50	8.50	8.50	0.00
Total Base Charges				173.60	173.60	0.00
RBA Rate Adjustment	¢/kWh	1.5654	1.5654	7.83	7.83	0.00
PBF Surcharge	¢/kWh	0.4244	0.4244	2.12	2.12	0.00
Renewable Energy Infrastructure Cost Recovery Provision	¢/kWh	0.0000 ¹	0.0000 ¹	0.00	0.00	0.00
SolarSaver Adjustment	¢/kWh	0.0000	0.0000	0.00	0.00	0.00
Purchased Power Adjustment	¢/kWh	-0.0307	-0.0275	-0.15	-0.14	0.01
Energy Cost Adjustment	¢/kWh	-9.278	-7.391	-46.39	-36.95	9.44
Green Infrastructure Fee	\$	1.18	1.18	1.18	1.18	0.00
Avg Residential Bill at 500 kwh				138.19	147.64	

Increase (Decrease -)	9.45
% Change	6.84%

	Rate		Charge (\$) at 600 Kwh			
	09/01/17	10/01/17	09/01/17	10/01/17	Difference	
Base Rates	effective date:	08/01/13	08/01/13			
Base Fuel/Energy Charge	¢/kWh	23.0016	23.0016	138.01	138.01	0.00
Non-fuel Fuel Energy Charge						
First 350 kWhr per month	¢/kWh	9.3393	9.3393	32.69	32.69	0.00
Next 850 kWhr per month	¢/kWh	11.5993	11.5993	29.00	29.00	0.00
Customer Charge	\$	8.50	8.50	8.50	8.50	0.00
Total Base Charges				208.20	208.20	0.00
RBA Rate Adjustment	¢/kWh	1.5654	1.5654	9.39	9.39	0.00
PBF Surcharge	¢/kWh	0.4244	0.4244	2.55	2.55	0.00
Renewable Energy Infrastructure Cost Recovery Provision	¢/kWh	0.0000 ¹	0.0000 ¹	0.00	0.00	0.00
SolarSaver Adjustment	¢/kWh	0.0000	0.0000	0.00	0.00	0.00
Purchased Power Adjustment	¢/kWh	-0.0307	-0.0275	-0.18	-0.17	0.01
Energy Cost Adjustment	¢/kWh	-9.278	-7.391	-55.67	-44.35	11.32
Green Infrastructure Fee	\$	1.18	1.18	1.18	1.18	0.00
Avg Residential Bill at 600 kwh				165.47	176.80	

¹ Reflects updated REIP rate.

Increase (Decrease -)	11.33
% Change	6.85%

**MAUI ELECTRIC COMPANY, LTD. -- Maui Division
FUEL OIL ADJUSTMENT FACTOR DATA**

<u>EFFECTIVE DATE</u>	FUEL FACTOR CENTS / KWH		RESIDENTIAL BILL (\$)	
	<u>RESIDENTIAL & COMMERCIAL</u>		<u>@ 500 KWH</u>	<u>@ 600 KWH</u>
January 1, 2015	-0.702		183.85	220.24
February 1, 2015	-4.255		165.96	198.78
March 1, 2015	-7.740		148.62	177.96
April 1, 2015	-6.921		151.30	181.18
May 1, 2015	-6.092		157.06	188.10
June 8, 2015	-4.794		163.43	195.74
July 1, 2015	-4.336		164.44	196.93
August 1, 2015	-4.415		164.11	196.54
September 1, 2015	-5.820		157.12	188.14
October 1, 2015	-7.471		148.88	178.26
November 1, 2015	-8.651		141.57	169.49
December 1, 2015	-8.557		142.07	170.10
January 1, 2016	-8.649		141.54	169.48
February 1, 2016	-10.511		132.58	158.73
March 1, 2016	-9.196		139.17	166.62
April 1, 2016	-8.768		140.37	168.08
May 1, 2016	-10.483		132.89	159.10
June 1, 2016	-8.170		143.47	171.79
July 1, 2016	-7.334		148.08	177.36
August 1, 2016	-6.973		149.89	179.52
September 1, 2016	-7.866		145.42	174.16
October 1, 2016	-8.162		143.94	172.39
November 1, 2016	-9.782		135.84	162.67
December 1, 2016	-9.069		139.41	166.95
January 1, 2017	-7.659		146.59	175.55
February 1, 2017	-8.247		143.65	172.02
March 1, 2017	-7.314		148.32	177.61
June 1, 2017	-5.191		159.61	191.16
July 1, 2017	-5.635		157.32	188.42
April 1, 2017	-5.770		155.35	186.05
May 1, 2017	-7.998		144.79	173.38
August 1, 2017	-7.867		145.30	174.01
September 1, 2017	-9.278		138.19 ¹	165.47 ¹
October 1, 2017	-7.391		147.64 ¹	176.80 ¹

¹ Reflects correction to the typical residential bill calculation.

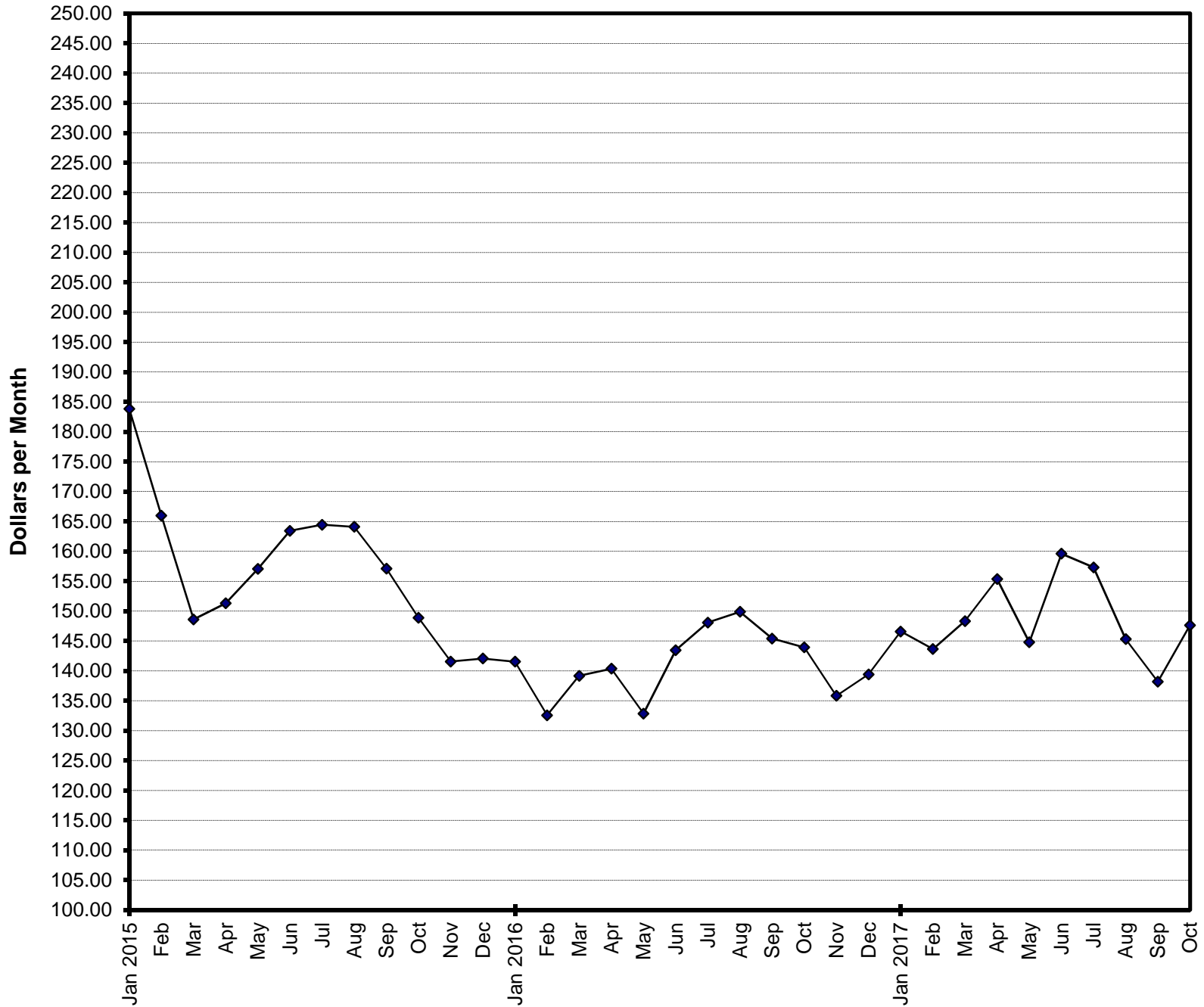
**MAUI ELECTRIC COMPANY, LTD. -- Maui Division
RESIDENTIAL SURCHARGE DATA**

<u>EFFECTIVE DATE</u>	<u>DESCRIPTION OF SURCHARGE</u>	<u>RATE</u>
06/01/11	IRP RECOVERY REFUND	0.000 PERCENT ON BASE
08/01/13	FINAL RATE INCREASE (1.25%), DOCKET NO. 2011-0092 (2012 TEST YEAR)	
01/01/15 - 01/31/15	PURCHASED POWER ADJUSTMENT	0.1117 CENTS/KWH
02/01/15 - 02/28/15	PURCHASED POWER ADJUSTMENT	0.0875 CENTS/KWH
03/01/15 - 03/31/15	PURCHASED POWER ADJUSTMENT	0.1036 CENTS/KWH
04/01/15 - 04/30/15	PURCHASED POWER ADJUSTMENT	0.0963 CENTS/KWH
04/01/15 - 04/30/15	SOLARSAVER ADJUSTMENT	-0.2744 CENTS/KWH
05/01/15 - 05/31/15	PURCHASED POWER ADJUSTMENT	0.1444 CENTS/KWH
05/01/15 - 03/31/16	SOLARSAVER ADJUSTMENT	0.0000 CENTS/KWH
06/01/15 - 06/30/15	PURCHASED POWER ADJUSTMENT	0.1453 CENTS/KWH
06/01/15 - 06/07/15	REVENUE BALANCING ACCOUNT RATE ADJUSTMENT	0.0000 CENTS/KWH
06/08/15 - 05/31/16	REVENUE BALANCING ACCOUNT RATE ADJUSTMENT	1.5987 CENTS/KWH
07/01/15 - 07/31/15	PURCHASED POWER ADJUSTMENT	0.1482 CENTS/KWH
07/01/15 - 06/30/16	RESID. PBF SURCHARGE ADJUSTMENT	0.4749 CENTS/KWH
07/01/15 - 12/31/15	GREEN INFRASTRUCTURE FEE	1.42 DOLLARS/MONTH
08/01/15 - 08/31/15	PURCHASED POWER ADJUSTMENT	0.1613 CENTS/KWH
08/17/15 - 02/29/16	RENEWABLE ENERGY INFRASTRUCTURE COST RECOVERY PROVISION	0.0103 CENTS/KWH
09/01/15 - 09/30/15	PURCHASED POWER ADJUSTMENT	0.1573 CENTS/KWH
10/01/15 - 10/31/15	PURCHASED POWER ADJUSTMENT	0.1612 CENTS/KWH
11/01/15 - 11/30/15	PURCHASED POWER ADJUSTMENT	-0.1207 CENTS/KWH
12/01/15 - 12/31/15	PURCHASED POWER ADJUSTMENT	-0.1139 CENTS/KWH
01/01/16 - 01/31/16	PURCHASED POWER ADJUSTMENT	-0.1055 CENTS/KWH
01/01/16 - 06/30/16	GREEN INFRASTRUCTURE FEE	1.30 DOLLARS/MONTH
02/01/16 - 02/29/16	PURCHASED POWER ADJUSTMENT	-0.0338 CENTS/KWH
03/01/16 - 03/31/16	PURCHASED POWER ADJUSTMENT	-0.0325 CENTS/KWH
03/01/16 - 02/28/17	RENEWABLE ENERGY INFRASTRUCTURE COST RECOVERY PROVISION	0.0099 CENTS/KWH
04/01/16 - 04/30/16	PURCHASED POWER ADJUSTMENT	-0.0355 CENTS/KWH
04/01/16 - 04/30/16	SOLARSAVER ADJUSTMENT	-0.1835 CENTS/KWH
05/01/16 - 03/31/17	SOLARSAVER ADJUSTMENT	0.0000 CENTS/KWH
05/01/16 - 05/31/16	PURCHASED POWER ADJUSTMENT	0.0000 CENTS/KWH
06/01/16 - 06/30/16	PURCHASED POWER ADJUSTMENT	-0.0081 CENTS/KWH
06/01/16 - 05/31/17	REVENUE BALANCING ACCOUNT RATE ADJUSTMENT	1.4082 CENTS/KWH
07/01/16 - 04/30/17	PURCHASED POWER ADJUSTMENT	0.0000 CENTS/KWH
07/01/16 - 12/31/16	GREEN INFRASTRUCTURE FEE	1.13 DOLLARS/MONTH
07/01/16 - 06/30/17	RESID. PBF SURCHARGE ADJUSTMENT	0.5865 CENTS/KWH
01/01/17 - 06/30/17	GREEN INFRASTRUCTURE FEE	1.27 DOLLARS/MONTH
03/01/17 - 08/16/17	RENEWABLE ENERGY INFRASTRUCTURE COST RECOVERY PROVISION	0.01 CENTS/KWH
04/01/17 - 04/30/17	SOLARSAVER ADJUSTMENT	-0.1378 CENTS/KWH
05/01/17	SOLARSAVER ADJUSTMENT	0.0000 CENTS/KWH
05/01/17 - 05/31/17	PURCHASED POWER ADJUSTMENT	-0.0224 CENTS/KWH
06/01/17 - 06/30/17	PURCHASED POWER ADJUSTMENT	-0.0218 CENTS/KWH
06/01/17	REVENUE BALANCING ACCOUNT RATE ADJUSTMENT	1.5654 CENTS/KWH
07/01/17	GREEN INFRASTRUCTURE FEE	1.18 DOLLARS/MONTH
07/01/17 - 07/31/17	PURCHASED POWER ADJUSTMENT	-0.0202 CENTS/KWH
07/01/17	RESID. PBF SURCHARGE ADJUSTMENT	0.4244 CENTS/KWH
08/01/17 - 08/31/17	PURCHASED POWER ADJUSTMENT	-0.0286 CENTS/KWH
08/17/17	RENEWABLE ENERGY INFRASTRUCTURE COST RECOVERY PROVISION	0.0000 CENTS/KWH
09/01/17 - 09/30/17	PURCHASED POWER ADJUSTMENT	-0.0307 CENTS/KWH
10/01/17	PURCHASED POWER ADJUSTMENT	-0.0275 CENTS/KWH

~ Surcharges currently in effect are in bold.

~ Base charges include customer charge, demand charge, energy charge, power factor adjustment, voltage discount and minimum charge.

Maui Electric Company, Ltd. - Maui Division Residential Bill at 500 kWh/Month Consumption



Note: Reflects correction to the typical residential bill calculations for September 2017 and October 2017.