



February 24, 2023

The Honorable Chair and Members
of the Hawai'i Public Utilities Commission
Kekuanao'a Building, First Floor
465 South King Street
Honolulu, Hawai'i 96813

Dear Commissioners:

Subject: Hawai'i Electric Light Energy Cost Recovery Factor for March 2023

Hawai'i Electric Light Company, Inc.'s ("Hawai'i Electric Light" or "Company") Energy Cost Recovery factor for March 2023 is 25.651 cents per kilowatt-hour ("kWh"), an increase of 0.733 cents per kWh from last month. A residential customer consuming 500 kWh of electricity will be paying \$235.76, an increase of \$3.95 compared to rates effective February 1, 2023. The increase in the residential bill is due to the increase in the Energy Cost Recovery Factor (+\$3.67) and increase in the Purchased Power Adjustment Clause rate (+\$0.28).

Hawai'i Electric Light's fuel composite cost of generation increased 65.73 cents per million BTU to 2,012.10 cents per million BTU. The composite cost of distributed generation decreased (-0.177) cents per kWh to 27.501 cents per kWh. The composite cost of purchased energy increased 0.358 cents per kWh to 18.170 cents per kWh.

The attached sheets set forth the energy cost recovery factor in cents per kWh for each rate schedule that is applicable for pro rata use beginning March 1, 2023.

Very truly yours,

/s/ Dean K. Matsuura

Dean K. Matsuura
Director, Regulatory Rate Proceedings

Attachments

cc: Division of Consumer Advocacy

HAWAII ELECTRIC LIGHT COMPANY, INC.

ENERGY COST RECOVERY FACTOR

| | <u>EFFECTIVE DATES</u> | | |
|------------------------------------|------------------------|----------------|---------------|
| | <u>2/01/23</u> | <u>3/01/23</u> | <u>Change</u> |
| <u>Composite Cost</u> | | | |
| Generation, ¢/mmbtu | 1,946.37 | 2,012.10 | 65.73 |
| Dispersed Generation Energy, ¢/kWh | 27.678 | 27.501 | (0.177) |
| Purchased Energy, ¢/kWh | 17.812 | 18.170 | 0.358 |
| <u>Residential Schedule "R"</u> | | | |
| Energy Cost Recovery - ¢/kWh | 24.918 | 25.651 | 0.733 |
| <u>Others - "G,J,P,F"</u> | | | |
| Energy Cost Recovery - ¢/kWh | 24.918 | 25.651 | 0.733 |
| Residential Customer with: | | | |
| 500 KWH Consumption - \$/Bill | 231.81 | \$235.76 | \$3.95 |
| 600 KWH Consumption - \$/Bill | 277.63 | \$282.37 | \$4.74 |

HAWAII ELECTRIC LIGHT COMPANY, INC.
ENERGY COST RECOVERY (ECR) FILING

ENERGY COST RECOVERY (ECR) FILING - March 1, 2023 (Page 1 of 2)

| | | |
|------|-----------------------|------------------|
| Line | | |
| 1 | Effective Date | March 1, 2023 |
| 2 | Supercedes Factors of | February 1, 2023 |

GENERATION COMPONENT

| CENTRAL STATION WITH WIND/HYDRO COMPONENT | | | | |
|--|---|------------------|-------------------|-------------------|
| FUEL PRICES, ¢/mmbtu | | | | |
| 3 | | | | |
| 4 | Hill Industrial | 1,552.84 | | |
| 5 | Puna Industrial | 1,577.40 | | |
| 6 | Keahole Diesel | 2,589.69 | | |
| 6a | Keahole ULSD | 2,712.93 | | |
| 7 | Waimea ULSD Diesel | 2,696.44 | | |
| 8 | Hilo Diesel | 2,536.90 | | |
| 8a | Hilo (Kanoelehua) ULSD Diesel ¹ | 2,659.26 | | |
| 9 | Puna Diesel | 2,531.43 | | |
| 10 | Wind | 0.00 | | |
| 11 | Hydro | 0.00 | | |
| | BTU MIX, % | | | |
| 12 | | | | |
| 13 | Hill Industrial | 37.985 | | |
| 14 | Puna Industrial | 11.555 | | |
| 15 | Keahole Diesel | 40.826 | | |
| 15a | Keahole ULSD | 0.292 | | |
| 16 | Waimea ULSD Diesel | 0.294 | | |
| 17 | Hilo Diesel | 0.273 | | |
| 17a | Hilo (Kanoelehua) ULSD Diesel ¹ | 0.364 | | |
| 18 | Puna Diesel | 5.937 | | |
| 19 | Wind | 0.000 | | |
| 20 | Hydro | 2.475 | | |
| | | 100.0000 | | |
| 21 | COMPOSITE COST OF GENERATION, CENTRAL STATION + WIND/HYDRO ¢/mmbtu | 2,012.10 | | |
| 22 | % Input to System kWh Mix | 61.176 | | |
| | EFFICIENCY FACTOR, mmbtu/kWh | | | |
| | (A) | (B) | (C) (D) | |
| | | | Percent of | |
| | | Eff Factor | Centri Stn + | Weighted |
| | <u>Fuel Type</u> | <u>mmbtu/kwh</u> | <u>Wind/Hydro</u> | <u>Eff Factor</u> |
| 23 | Industrial | 0.014683 | 49.539 | 0.007274 |
| 24 | Diesel | 0.011226 | 47.986 | 0.005387 |
| 25 | Other | 0.012514 | 2.475 | 0.000310 |
| | (Lines 23, 24, 25): Col(B) x Col(C) = Col(D) | | 100.0000 | |
| 26 | Weighted Efficiency Factor, mmbtu/kWh [Lines 23(D) + 24(D) + 25(D)] | | | 0.0129710 |
| 27 | WEIGHTED COMPOSITE CENTRAL STATION + WIND/HYDRO GENERATION COST, ¢/kWh (Lines (21 x 22 x 26)) | | | 15.96629 |
| 28 | BASE CENTRAL STATION + WIND/HYDRO GENERATION COST, ¢/mmbtu | | | 0.00 |
| 29 | Base % Input to Sys kWh Mix | | | 0.00 |
| 30 | Efficiency Factor, mmbtu/kwh | | | 0.000000 |
| 31 | WEIGHTED BASE CENTRAL STATION + WIND/HYDRO GENERATION COST ¢/kWh (Lines (28 x 29 x 30)) | | | 0.00000 |
| 32 | COST LESS BASE (Line 27 - 31) | | | 15.96629 |
| 33 | Revenue Tax Req Multiplier | | | 1.0975 |
| 34 | CENTRAL STATION + WIND/HYDRO GENERATION FACTOR, ¢/kWh (Line (32 x 33)) | | | 17.52300 |

| DG ENERGY COMPONENT | | |
|----------------------------|--|---------|
| 35 | COMPOSITE COST OF DG ENERGY, ¢/kWh | 27.501 |
| 36 | % Input to System kWh Mix | 0.107 |
| 37 | WEIGHTED COMPOSITE DG ENERGY COST, ¢/kWh (Lines 35 x 36) | 0.02943 |
| 38 | BASE DG ENERGY COMPOSITE COST | 0.000 |
| 39 | Base % Input to System kWh Mix | 0.00 |
| 40 | WEIGHTED BASE DG ENERGY COST, ¢/kWh (Line 38 x 39) | 0.00000 |
| 41 | Cost Less Base (Line 37 - 40) | 0.02943 |
| 42 | Loss Factor | 1.062 |
| 43 | Revenue Tax Req Multiplier | 1.0975 |
| 44 | DG FACTOR, ¢/kWh (Line 41 x 42 x 43) | 0.03430 |

| SUMMARY OF | | |
|-------------------|--|----------|
| | TOTAL GENERATION FACTOR, ¢/kWh | |
| 45 | Cntrl Stn+Wind/Hydro (line 34) | 17.52300 |
| 46 | DG (line 44) | 0.03430 |
| 47 | TOTAL GENERATION FACTOR, ¢/kWh (lines 45 + 46) | 17.55730 |

¹ Hilo ULSD same location as Kanoelehua ULSD

Hawaii Electric Light Company, Inc.
FUEL OIL INVENTORY PRICES FOR March 1, 2023

INDUSTRIAL FUEL COSTS:

| | <u>HILO</u> | <u>PUNA</u> |
|---------------------------------------|-------------|-------------|
| Average Industrial Fuel Cost - \$/BBL | 97.8288 | 97.8288 |
| Land Transportation Cost - \$/BBL | -- | 1.5473 |
| Industrial Costs For Filing - \$/BBL | 97.8288 | 99.3761 |
| Conversion Factors - mmbtu/BBL | 6.30 | 6.30 |
| Industrial Costs For Filing - ¢/mmbtu | 1,552.84 | 1,577.40 |

DIESEL FUEL COSTS:

| | <u>KEAHOLE</u> | <u>PUNA CT-3</u> | <u>HILO</u> |
|-----------------------------------|----------------|------------------|-------------|
| Average Diesel Fuel Cost - \$/BBL | 147.1077 | 147.1077 | 147.1077 |
| Land Transportation Cost - \$/BBL | 4.6483 | 1.2340 | 1.5546 |
| Diesel Costs For Filing - \$/BBL | 151.7560 | 148.3417 | 148.6623 |
| Conversion Factors - mmbtu/BBL | 5.86 | 5.86 | 5.86 |
| Diesel Costs For Filing - ¢/mmbtu | 2,589.69 | 2,531.43 | 2,536.90 |

ULSD FUEL COSTS:

| | <u>KEAHOLE</u> | <u>WAIMEA</u> | <u>HILO</u> | <u>DISPERSED GENERATION</u> |
|-----------------------------------|----------------|---------------|-------------|-----------------------------|
| Average ULSD Fuel Cost - \$/BBL | 150.8460 | 150.8460 | 150.8460 | 150.8460 |
| Land Transportation Cost - \$/BBL | 4.6051 | 3.6598 | 1.5296 | - |
| ULSD Costs For Filing - \$/BBL | 155.4511 | 154.5058 | 152.3756 | 150.8460 |
| Conversion Factors - mmbtu/BBL | 5.73 | 5.73 | 5.73 | 5.73 |
| ULSD Costs For Filing - ¢/mmbtu | 2,712.93 | 2,696.44 | 2,659.26 | 2,632.57 |

Dispersed Generation, cents per kWh

| | <u>COMPOSITE COST OF DISP. GEN.</u> |
|--|-------------------------------------|
| BBIs Fuel: | 184.5882 |
| \$/BBI Inv Cost: | 150.8460 |
| Fuel \$ (Prod Sim Consumption x Unit Cost) | 27,844.40 |
| Net kWh (from Prod Sim) | 101,250 |
| cents/kWh: | 27.501 |

HAWAII ELECTRIC LIGHT CO., INC.
Estimated Weighted Average
March 2023

| | SHIPMAN INDUSTRIAL | | HILL INDUSTRIAL | | COST PER BARREL | | |
|------------------------------|--------------------|----------------------|-----------------|----------------------|-----------------|----------|----------|
| | BBL | COST | BBL | COST | EXCL LT | LT Total | |
| Balance at 01/31/2023 | 0 | 0.00 | 42,839 | 4,013,430.07 | | | |
| Less: Est'd Inventory Addn | | | 1,887 | 165,040.30 | | | |
| Purchases: Estimate | xxxxxx | xxxxxxxxxxxxxxxxxxxx | xxxxxxxxxx | xxxxxxxxxxxxxxxxxxxx | | | |
| Actual | xxxxxx | xxxxxxxxxxxxxxxxxxxx | xxxxxxxxxx | xxxxxxxxxxxxxxxxxxxx | | | |
| Transfers out: Estimate | xxxxxx | xxxxxxxxxxxxxxxxxxxx | xxxxxxxxxx | xxxxxxxxxxxxxxxxxxxx | | | |
| Actual | xxxxxx | xxxxxxxxxxxxxxxxxxxx | xxxxxxxxxx | xxxxxxxxxxxxxxxxxxxx | | | |
| Transfers in: Estimate | 0 | 0.00 | (47,689) | (4,357,219.21) | | | |
| Actual | 0 | 0.00 | 37,316 | 3,416,147.80 | | | |
| Consumed: Estimate | 0 | 0.00 | 28,630 | 2,460,656.43 | | | |
| Actual | 0 | 0.00 | (25,705) | (2,216,572.29) | | | |
| Balance Per G/L 01/31/2023 | 0 | 0.00 | 37,278 | 3,481,483.10 | | | |
| Purchases | xxxxxx | xxxxxxxxxxxxxxxxxxxx | xxxxxxxxxx | xxxxxxxxxxxxxxxxxxxx | | | |
| Transfer out | xxxxxx | xxxxxxxxxxxxxxxxxxxx | xxxxxxxxxx | xxxxxxxxxxxxxxxxxxxx | | | |
| Transfer in | 0 | 0.00 | 13,020 | 1,236,946.27 | | | |
| Consumed | 0 | 0.00 | (20,206) | (1,875,427.97) | 106.5901 | 0.0000 | 106.5901 |
| Balance @ 02/28/2023 | 0 | 0.00 | ##### | 2,843,001.40 | | | |
| Inv From Offsite/Transfers | 0 | 0.00 | 0 | 0.00 | | | |
| Est'd Inventory Addition | 0 | 0.00 | 0 | 0.00 | | | |
| Fuel Balance @ 02/28/2023 | 0 | 0.00 | 30,092 | 2,843,001.40 | | | |
| Reverse Fuel Balance | xxxxxx | 0.00 | xxxxxx | (2,843,001.40) | | | |
| Fuel Bal @ Avg Price | xxxxxx | 0.00 | xxxxxx | 2,943,863.45 | | | |
| Total @ 03/01/2023 Avg Price | 0 | 0.00 | 30,092 | 2,943,863.45 | | | |

Weighted Avg Cost/BBL by Location #DIV/0! 94.4770

Weighted Avg Cost/BBL @ Avg Cost #DIV/0! 97.8288

HAWAII ELECTRIC LIGHT CO., INC.
Estimated Weighted Average
March 2023

PUNA INDUSTRIAL

| | BBL | COST | LAND TRANSP | COST PER BARREL | | TOTAL |
|----------------------------------|--------------|--------------|----------------|-----------------|--------|---------|
| | | | | EXCLUDE LT | LT | |
| Balance at 01/31/2023 | 9,822 | 874,321.60 | 15,197.79 | | | |
| Less: Est'd Inventory Addition | 0 | 0.00 | 0.00 | | | |
| Purchases: Estimate | xxxxxxxxxxxx | xxxxxxxxxxxx | xxxxxxxxxxxx | | | |
| Actual | xxxxxxxxxxxx | xxxxxxxxxxxx | xxxxxxxxxxxx | | | |
| Transfers out: Estimate | xxxxxxxxxxxx | xxxxxxxxxxxx | xxxxxxxxxxxx | | | |
| Actual | xxxxxxxxxxxx | xxxxxxxxxxxx | xxxxxxxxxxxx | | | |
| Transfers in: Estimate | 0 | 0.00 | 0.00 | | | |
| Actual | 0 | 0.00 | 0.00 | | | |
| Consumed: Estimate | 0 | 0.00 | 0.00 | | | |
| Actual | 0 | 42,978.87 | 0.00 | | | |
| Balance Per G/L 01/31/2023 | 9,822 | 917,300.47 | 15,197.79 | | | |
| Purchases | xxxxxxxxxxxx | xxxxxxxxxxxx | xxxxxxxxxxxx | | | |
| Transfer out | xxxxxxxxxxxx | xxxxxxxxxxxx | xxxxxxxxxxxx | | | |
| Transfer in | 0 | 0 | 0.00 | | | |
| Consumed | 0 | 0.00 | 0.00 | 92.8154 | 1.5473 | 94.3627 |
| Balance @ 02/28/2023 | 9,822 | 917,300.47 | 15,197.79 | | | |
| Inventory From Offsite/Transfers | 0 | 0.00 | 0.00 | | | |
| Est'd Inventory Addition | 0 | 0.00 | 0.00 | | | |
| Fuel Bal @ Avg Price | 9,822 | 917,300.47 | 15,197.79 | | 1.5473 | |
| Reverse Fuel Balance | xxxxxxxxxxxx | (917,300.47) | xxxxxxxxxxxx | | | |
| Fuel Balance @ Avg Price | xxxxxxxxxxxx | 960,874.21 | xxxxxxxxxxxx | | | |
| Total @ 03/01/2023 Avg Price | 9,822 | 960,874.21 | 15,197.79 | | | |

Weighted Avg Cost/BBL by Location

93.3924

1.5473

Weighted Avg Cost/BBL @ Avg Cost

97.8288

1.5473

HAWAII ELECTRIC LIGHT CO., INC.
Estimated Weighted Average
March 2023

KEAHOLE DIESEL

| HS Diesel | BBL | GALLONS | COST EXCLUDE LT | LAND TRANSP | COST PER EXCLUD LT | BARREL LT | TOTAL |
|----------------------------------|-------------|------------------|--------------------|------------------|-----------------------|--------------|----------|
| Balance at 01/31/2023 | 60,462.7 | 2,539,434.0 | 8,868,184.2 | 264,774.4 | | | |
| Less: Est'd Inventory Addition | 0.0 | 0.0 | 0.0 | 0.0 | | | |
| Purchases: Estimate | 0.0 | 0.0 | 0.0 | 0.0 | | | |
| Actual | 0.0 | 0.0 | 0.0 | 0.0 | | | |
| Transfers out: Estimate | | xxxxxxxxxxxxxxxx | xxxxxxxxxxxxxxxx | xxxxxxxxxxxxxxxx | | | |
| Actual | | xxxxxxxxxxxxxxxx | xxxxxxxxxxxxxxxx | xxxxxxxxxxxxxxxx | | | |
| Transfers in: Estimate | (36,337.0) | (1,526,153.0) | (5,260,991.6) | (162,557.1) | | | |
| Actual | 33,915.9 | 1,424,468.0 | 4,780,699.5 | 150,240.85 | | | |
| Consumed: Estimate | 29,975.7 | 1,258,978.0 | 4,436,181.1 | 108,764.13 | | | |
| Actual | (30,319.6) | (1,273,422.0) | (4,632,211.6) | (98,561.2) | 152.7796 | | |
| Balance Per G/L 01/31/2023 | 57,697.7 | 2,423,305 | 8,191,861.64 | 262,661.04 | 141.9789 | | |
| Purchases | xxxxxxxxxxx | xxxxxxxxxxxxxxxx | xxxxxxxxxxxxxxxx | xxxxxxxxxxxxxxxx | | | |
| Transfer out | xxxxxxxxxxx | xxxxxxxxxxxxxxxx | xxxxxxxxxxxxxxxx | xxxxxxxxxxxxxxxx | | | |
| Transfer in | 27,100.5 | 1,138,223.0 | 4,008,133.3 | 121,237.0 | 147.8986 | | |
| Consumed | (38,152.0) | (1,602,382.0) | (5,465,870.0) | (167,071.21) | 143.2658 | 4.3791 | 147.6449 |
| Balance @ 02/28/2023 | 46,646.3 | 1,959,146 | 6,734,125.01 | 216,826.83516 | 144.3656 | | |
| Inventory From Offsite/Transfers | 0.0 | 0.0 | 0.0 | 0.00 | | | |
| Est'd Inventory Addition | 0.0 | 0 | 0.0 | 0.00 | | | |
| Fuel Balance @ Avg Price | 46,646.3 | 1,959,146 | 6,734,125.01 | 216,826.84 | 144.3656 | | |
| Reverse Fuel Balance | xxxxxxxxxxx | xxxxxxxxxxxxxxxx | (6,734,125.0) | xxxxxxxxxxxxxxxx | | | |
| Fuel Balance @ Avg Price | xxxxxxxxxxx | xxxxxxxxxxxxxxxx | 6,862,033.5 | xxxxxxxxxxxxxxxx | | | |
| Total @ 03/01/2023 Avg Price | 46,646.3 | 1,959,146 | 6,862,033.51 | 216,826.84 | 147.1077 | | |

Weighted Avg Cost/BBL by Location 144.3656 4.6483

Weighted Avg Cost/BBL @ Avg Cost 147.1077 4.6483

HAWAII ELECTRIC LIGHT CO., INC.
Estimated Weighted Average
March 2023

PUNA CT-3

| HS Diesel | BBL | GALLONS | COST EXCLUD LT | LAND TRANSP | COST PER EXCL LT | BARREL LT | TOTAL |
|------------------------------|------------|------------------|-------------------|----------------|---------------------|--------------|----------|
| Balance at 01/31/2023 | 4,519.2 | 189,806.0 | 631,064.5 | 8,560.6 | | | |
| Less: Est'd Inven Addition | 0.0 | 0.0 | 0.0 | 0.0 | | | |
| Purchases: Estimate | | xxxxxxxxxxxxxxxx | xxxxxxxxxxxxxx | xxxxxxxxxxxxxx | | | |
| Actual | | xxxxxxxxxxxxxxxx | xxxxxxxxxxxxxx | xxxxxxxxxxxxxx | | | |
| Transfers out: Estimate | | xxxxxxxxxxxxxxxx | xxxxxxxxxxxxxx | xxxxxxxxxxxxxx | | | |
| Actual | | xxxxxxxxxxxxxxxx | xxxxxxxxxxxxxx | xxxxxxxxxxxxxx | | | |
| Transfers in: Estimate | (6,671.8) | (280,214.0) | (946,716.6) | (11,613.5) | | | |
| Actual | 9,772.3 | 410,435.0 | 1,305,390.4 | 16,751.2 | | | |
| Consumed: Estimate | 6,439.6 | 270,463.0 | 953,013.4 | 9,133.3 | | | |
| Actual | (9,942.0) | (417,564.0) | (1,358,183.9) | (15,664.5) | | | |
| Balance Per G/L 01/31/2023 | 4,117.3 | 172,926 | 584,567.72 | 7,166.96 | | | |
| Purchases | | xxxxxxxxxxxxxx | xxxxxxxxxxxxxx | xxxxxxxxxxxxxx | | | |
| Transfer out | | xxxxxxxxxxxxxx | xxxxxxxxxxxxxx | xxxxxxxxxxxxxx | | | |
| Transfer in | 16,150.0 | 678,302.0 | 2,535,373.8 | 28,112.4 | 156.9886 | | |
| Consumed | (15,552.6) | (653,209) | (2,228,155.0) | (29,461.28) | 143.2658 | 1.8943 | 145.1601 |
| Balance @ 02/28/2023 | 4,714.7 | 198,019 | ##### | 5,818.07 | 189.1487 | | |
| Inven From Offsite/Transfers | 0.0 | 0 | 0.00 | 0.00 | | | |
| Est'd Inventory Addition | 0.0 | 0 | 0.00 | 0.00 | | | |
| Fuel Balance @ 02/28/2023 | 4,714.7 | 198,019 | 891,786.49 | 5,818.07 | 189.1487 | | |
| Reverse Fuel Balance | | xxxxxxxxxxxxxx | (891,786.49) | xxxxxxxxxxxxxx | | | |
| Fuel Balance @ Avg Price | | xxxxxxxxxxxxxx | 693,574.15 | xxxxxxxxxxxxxx | | | |
| Total @ 03/01/2023 Avg Price | 4,714.7 | 198,019 | 693,574.15 | 5,818.07 | 147.1077 | | |

Weighted Avg Cost/BBL by Location 189.1487 1.2340

Weighted Avg Cost/BBL @ Avg Cost 147.1077 1.2340

HAWAII ELECTRIC LIGHT CO., INC.
Estimated Weighted Average
March 2023

TOTAL HILO HS-DIESEL

| HS Diesel | BBL | GALLONS | COST EXCLUDE LT | LAND TRANSP | COST PER BARREL EXCL LT | LT | TOTAL |
|------------------------------|---------|--------------|--------------------------|----------------|----------------------------|--------|----------|
| Balance at 01/31/2023 | 1423.3 | 59,778 | 206,818 | 2,125 | | | |
| Less: Est'd Inven Addition | 0.0 | 0 | 0 | 0 | | | |
| Purchases: Estimate | | XXXXXXXXXXXX | XXXXXXXXXXXX | XXXXXXXXXXXX | | | |
| Actual | | XXXXXXXXXXXX | XXXXXXXXXXXX | XXXXXXXXXXXX | | | |
| Transfers out: Estimate | | XXXXXXXXXXXX | XXXXXXXXXXXX | XXXXXXXXXXXX | | | |
| Actual | | XXXXXXXXXXXX | XXXXXXXXXXXX | XXXXXXXXXXXX | | | |
| Transfers in: Estimate | -945.2 | -39699.0 | -135331.5 | -1452.4 | | | |
| Actual | 567.1 | 23819.0 | 76823.0 | 870.2 | | | |
| Consumed: Estimate | 604.8 | 25400.0 | 89500.4 | 762.2 | | | |
| Actual | -393.0 | -16508.0 | -59356.3 | -415.3 | | | |
| Balance Per G/L 01/31/2023 | 1256.9 | 52,790 | 178,453.96 | 1,889.42 | 141.9789 | | |
| Purchases | | XXXXXXXXXXXX | XXXXXXXXXXXX | XXXXXXXXXXXX | | | |
| Transfer out | | XXXXXXXXXXXX | XXXXXXXXXXXX | XXXXXXXXXXXX | | | |
| Transfer in | 1318.7 | 55385.0 | 208262.2 | 2026.3 | 0.0000 | | |
| Consumed | -1429.5 | -60040.0 | -204801.9 | -2134.0 | 143.2658 | 1.4928 | 144.7586 |
| Balance @ 02/28/2023 | 1,146.1 | 48,135 | 181,914.30 | 1781.72664 | 158.7286 | | |
| Inven From Offsite/Transfers | 0.0 | 0.0 | 0.0 | 0.0 | | | |
| Est'd Inventory Addition | 0.0 | 0.0 | 0.0 | 0.0 | | | |
| Fuel Balance @ Avg Price | 1,146.1 | 48,135 | 181,914.30 | 1,781.73 | 158.7286 | | |
| Reverse Fuel Balance | | XXXXXXXXXXXX | XXXXXXXXXXXX -181,914.30 | XXXXXXXXXXXX | | | |
| Fuel Balance @ Avg Price | | XXXXXXXXXXXX | XXXXXXXXXXXX 168,595.90 | XXXXXXXXXXXX | | | |
| Total @ 03/01/2023 Avg Price | 1,146.1 | 48,135 | 168,595.90 | 1,781.73 | 147.1077 | | |

Weighted Avg Cost/BBL by Location

158.7286 1.5546

Weighted Avg Cost/BBL @ Avg Cost

147.1077 1.5546

HAWAII ELECTRIC LIGHT CO., INC.
Estimated Weighted Average
March 2023

KEAHOLE ULSD

| ULSD | BBL | GALLONS | COST EXCLUDE LT | LAND TRANSP | COST PER BARREL EXCLUD LT | LT | TOTAL |
|----------------------------------|--------------|--------------|--------------------|----------------|------------------------------|--------|----------|
| Balance at 01/31/2023 | 2,252.1 | 94,589 | 343,798.68 | 9,106.15 | | | |
| Less: Est'd Inventory Addition | 0.0 | | | | | | |
| Purchases: Estimate | (378.6) | (15,902) | (53,117.90) | (1,693.79) | | | |
| Actual | 377.4 | 15,850 | 52,944.20 | 0.00 | | | |
| Transfers out: Estimate | | xxxxxxxxxxxx | xxxxxxxxxxxx | xxxxxxxxxxxx | | | |
| Actual | | xxxxxxxxxxxx | xxxxxxxxxxxx | xxxxxxxxxxxx | | | |
| Transfers in: Estimate | | 76 | 0.00 | 8.10 | | | |
| Actual | | (251) | 0.00 | 1,688.25 | | | |
| Consumed: Estimate | 325.5 | 13,669 | 50,030.02 | 1,161.94 | | | |
| Actual | (278.7) | (11,705) | (45,161.14) | 170.09 | 162.0477 | | |
| Balance Per G/L 01/31/2023 | 2,293.5 | 96,326 | 348,493.86 | 10,440.74 | 151.9501 | | |
| Purchases | 189.4 | 7,953 | 27,441.74 | 847.11 | 0.0000 | | |
| Estimated Purchases | 0.0 | 0 | 0.00 | 0.00 | | | |
| Transfer in | (3.6) | (153) | 0.00 | (16.30) | 0.00 | | |
| Consumed | (258.9) | (10,874) | (39,307.10) | (1,046.86) | 151.8207 | 4.0434 | 155.8641 |
| Balance @ 02/28/2023 | 2,220.3 | 93,252 | 336,628.50 | ##### | 151.6149 | | |
| Inventory From Offsite/Transfers | 0.0 | 0 | 0.00 | 0.00 | | | |
| Est'd Inventory Addition | 0.0 | 0 | 0.00 | 0.00 | | | |
| Fuel Balance @ Avg Price | 2,220.3 | 93,252 | 336,628.50 | 10,224.70 | 151.6149 | | |
| Reverse Fuel Balance | xxxxxxxxxxxx | xxxxxxxxxxxx | (336,628.50) | xxxxxxxxxxxx | | | |
| Fuel Balance @ Avg Price | xxxxxxxxxxxx | xxxxxxxxxxxx | 334,921.18 | xxxxxxxxxxxx | | | |
| Total @ 03/01/2023 Avg Price | 2,220.3 | 93,252 | 334,921.18 | 10,224.70 | 150.8460 | | |

Weighted Avg Cost/BBL by Location

151.6149 4.6051

Weighted Avg Cost/BBL @ Avg Cost

150.8460 4.6051

HAWAII ELECTRIC LIGHT CO., INC.
Estimated Weighted Average
March 2023

WAIMEA DIESEL

| ULSD | BBL | GALLONS | COST EXCLUDE LT | LAND TRANSP | COST PER BARREL | LT | TOTAL |
|------------------------------|--------------|--------------|--------------------|----------------|-----------------|--------|----------|
| Balance at 01/31/2023 | 746.3 | 31,344.0 | 109,797.6 | 2,721.10 | | | |
| Less: Est'd Inven Addition | 0.0 | 0.0 | 0.00 | 0.00 | | | |
| Purchases: Estimate | | (7,918) | (26,448.71) | (702.25) | | | |
| Actual | | 7,918.0 | 26,448.7 | 0.00 | | | |
| Transfers out: Estimate | | xxxxxxxxxxxx | xxxxxxxxxxxx | xxxxxxxxxxxx | | | |
| Actual | | xxxxxxxxxxxx | xxxxxxxxxxxx | xxxxxxxxxxxx | | | |
| Transfers in: Estimate | (6.0) | (252) | 0.00 | 0.00 | | | |
| Actual | 7.9 | 330 | 0.00 | 702.25 | | | |
| Consumed: Estimate | 218.3 | 9,170 | 33,563.19 | 657.89 | | | |
| Actual | (179.6) | (7,544) | (23,797.82) | (527.93) | | | |
| Balance Per G/L 01/31/2023 | 786.9 | 33,048 | 119,563.00 | 2,851.06 | 151.9501 | | |
| ULSD Purchases | 189.1 | 7,944 | 27,410.66 | 704.56 | 144.9204 | | |
| Estimated Purchases | 190.0 | 7,980 | 27,534.88 | 707.75 | | | |
| Transfer in | xxxxxxxxxxxx | 4 | 0.00 | 0.00 | #DIV/0! | | |
| Consumed | (317.8) | (13,348) | (48,250.06) | (1,158.80) | 151.8207 | 3.6462 | 155.4669 |
| Balance @ 02/28/2023 | 848.3 | 35,628 | 126,258.47 | 3104.57006 | 148.8396 | | |
| Inven From Offsite/Transfers | 0.0 | 0 | 0.00 | 0.00 | | | |
| Est'd Inventory Addition | 0.0 | 0 | 0.00 | 0.00 | | | |
| Fuel Balance @ Avg Price | 848.3 | 35,628 | 126,258.47 | 3,104.57 | 148.8396 | | |
| Reverse Fuel Balance | xxxxxxxxxxxx | xxxxxxxxxxxx | (126,258.47) | xxxxxxxxxxxx | | | |
| Fuel Balance @ Avg Price | xxxxxxxxxxxx | xxxxxxxxxxxx | 127,960.49 | xxxxxxxxxxxx | | | |
| Total @ 03/01/2023 Avg Price | 848.3 | 35,628 | 127,960.49 | 3,104.57 | 150.8460 | | |

Weighted Avg Cost/BBL by Location

148.8396 3.6598

Weighted Avg Cost/BBL @ Avg Cost

150.8460 3.6598

HAWAII ELECTRIC LIGHT CO., INC.
Estimated Weighted Average
March 2023

KANOELEHUA DIESEL

| ULSD | BBL | GALLONS | COST EXCLUDE LT | LAND TRANSP |
|----------------------------------|---------|----------|--------------------|----------------|
| Balance at 01/31/2023 | 1,202.8 | 50,516.0 | 183,861.1 | 1856.0 |
| Less: Est'd Inventory Addition | 0.0 | 0 | 0.00 | 0.00 |
| Purchases: Estimate | 0.0 | 0 | 0.00 | 0.00 |
| Actual | 0.0 | 0 | 0.00 | 0.00 |
| Transfers out: Estimate | | x | x | x |
| Actual | | x | x | x |
| Transfers in: Estimate | | 0 | 0.00 | 0.00 |
| Actual | | 0 | 0.00 | 0.00 |
| Consumed: Estimate | 151.7 | 6,371 | 23,318.55 | 197.26 |
| Actual | (126.9) | (5,328) | (20,646.46) | (174.66) |
| Balance Per G/L 01/31/2023 | 1,227.6 | 51,559 | 186,533.18 | 1,878.55 |
| ULSD Purchases | 189 | 7,950 | 27,431.39 | 290.86 |
| Estimated Purchases | 0 | - | - | - |
| Transfer in | 0 | 0 | 0.00 | 0.00 |
| Consumed | (156.5) | (6,575) | (23,767.17) | (241.57) |
| Balance @ 02/28/2023 | 1,260.3 | 52,934 | 190,197.40 | 1,927.84 |
| Inventory From Offsite/Transfers | 0.0 | 0 | 0.00 | 0.00 |
| Est'd Inventory Addition | 0.0 | 0 | 0.00 | 0.00 |
| Fuel Balance @ Avg Price | 1,260.3 | 52,934 | 190,197.40 | 1,927.84 |
| Reverse Fuel Balance | x | x | (190,197.40) | x |
| Fuel Balance @ Avg Price | x | x | 190,116.22 | x |
| Total @ 03/01/2023 Avg Price | 1,260.3 | 52,934 | 190,116.22 | 1,927.84 |

Weighted Avg Cost/BBL by Location

150.9104 1.5296

Weighted Avg Cost/BBL @ Avg Cost

150.8460 1.5296

HAWAII ELECTRIC LIGHT CO., INC.
Estimated Weighted Average
March 2023

DISPERSED GENERATION

| | BBL | GALLONS | COST | COST/BBL |
|------------------------------|------------|------------|-------------|----------|
| Balance at 01/31/2023 | 117.3 | 4,925 | 18,169.27 | |
| Less: Est'd Inven Addition | 0.0 | XXXXXXXXXX | XXXXXXXXXX | |
| Purchases: Estimate | 0.0 | 0 | 0.00 | |
| Actual | 0.0 | 0 | 0.00 | |
| Consumed: Estimate | 2.3 | 98 | 358.69 | |
| Actual | (3.6) | (151) | (901.75) | |
| | XXXXXXXXXX | XXXXXXXXXX | XXXXXXXXXX | |
| | XXXXXXXXXX | XXXXXXXXXX | XXXXXXXXXX | |
| | XXXXXXXXXX | XXXXXXXXXX | XXXXXXXXXX | |
| | XXXXXXXXXX | XXXXXXXXXX | XXXXXXXXXX | |
| Balance Per G/L 01/31/2023 | 116.00 | 4,872 | 17,626.21 | 151.9501 |
| Purchases | 0.0 | 0 | 0.00 | 0.0000 |
| Transfer out | XXXXXXXXXX | XXXXXXXXXX | XXXXXXXXXX | |
| Transfer in | XXXXXXXXXX | XXXXXXXXXX | XXXXXXXXXX | |
| Consumed | (16.8) | (705) | (2,548.42) | 151.8207 |
| Balance @ 02/28/2023 | 132.5 | 5,567 | 19,907.79 | 150.1935 |
| Est'd Inventory Addition | 0.0 | 0 | 0.00 | |
| Fuel Balance @ 02/28/2023 | 132.5 | 5,567 | 19,907.79 | |
| Reverse Fuel Balance | XXXXXXXXXX | XXXXXXXXXX | (19,907.79) | xxxx |
| Fuel Balance @ Avg Price | XXXXXXXXXX | XXXXXXXXXX | 19,994.28 | xxxx |
| Total @ 03/01/2023 Avg Price | 132.5 | 5,567 | 19,994.28 | 150.8460 |

Hawaii Electric Light Company, Inc.
PURCHASED POWER PRICES FOR March 1, 2023

| | | <u>March 1, 2023</u> <u>(¢/kWh)</u> | <u>Floor Rates</u> <u>(¢/kWh)</u> |
|------------------|------------|--|--------------------------------------|
| PGV (25 MW) | - on peak | 20.577 | 6.560 |
| PGV (22 MW) | - off peak | 20.909 | 5.430 |
| WAILUKU HYDRO | - on peak | 20.577 | 7.240 |
| | off peak | 20.909 | 5.970 |
| Other: (<100 KW) | Sch Q Rate | 20.290 | |

| | | <u>March 1, 2023</u> <u>(¢/kWh)</u> | <u>Floor Rates</u> <u>(¢/kWh)</u> |
|----------------|------------|--|--------------------------------------|
| HEP | | 21.733 | |
| PGV Addtl 5 MW | - on peak | 13.850 | 0.0000 |
| | - off peak | 13.850 | 0.0000 |
| PGV Addtl 8 MW | - on peak | 7.040 | 0.0000 |
| | - off peak | 7.040 | 0.0000 |

Hawaii Electric Light Company, Inc.
Energy Cost Reconciliation Adjustment
March 1, 2023

| <u>Line No.</u> | <u>Description</u> | <u>Amount</u> |
|-----------------|--|---------------|
| 1 | Amount to be (returned) or collected | (\$219,500) |
| 2 | Monthly Amount ($\frac{1}{3}$ x Line 1) | (\$73,167) |
| 3 | Revenue Tax Divisor | 0.91115 |
| | Total (Line 2 / Line 3) | (\$80,301) |
| 5 | Estimated MWh Sales (March 1, 2023) | 87,917 mwh |
| 6 | Adjustment (Line 4 / Line 5) | (0.091) ¢/kwh |

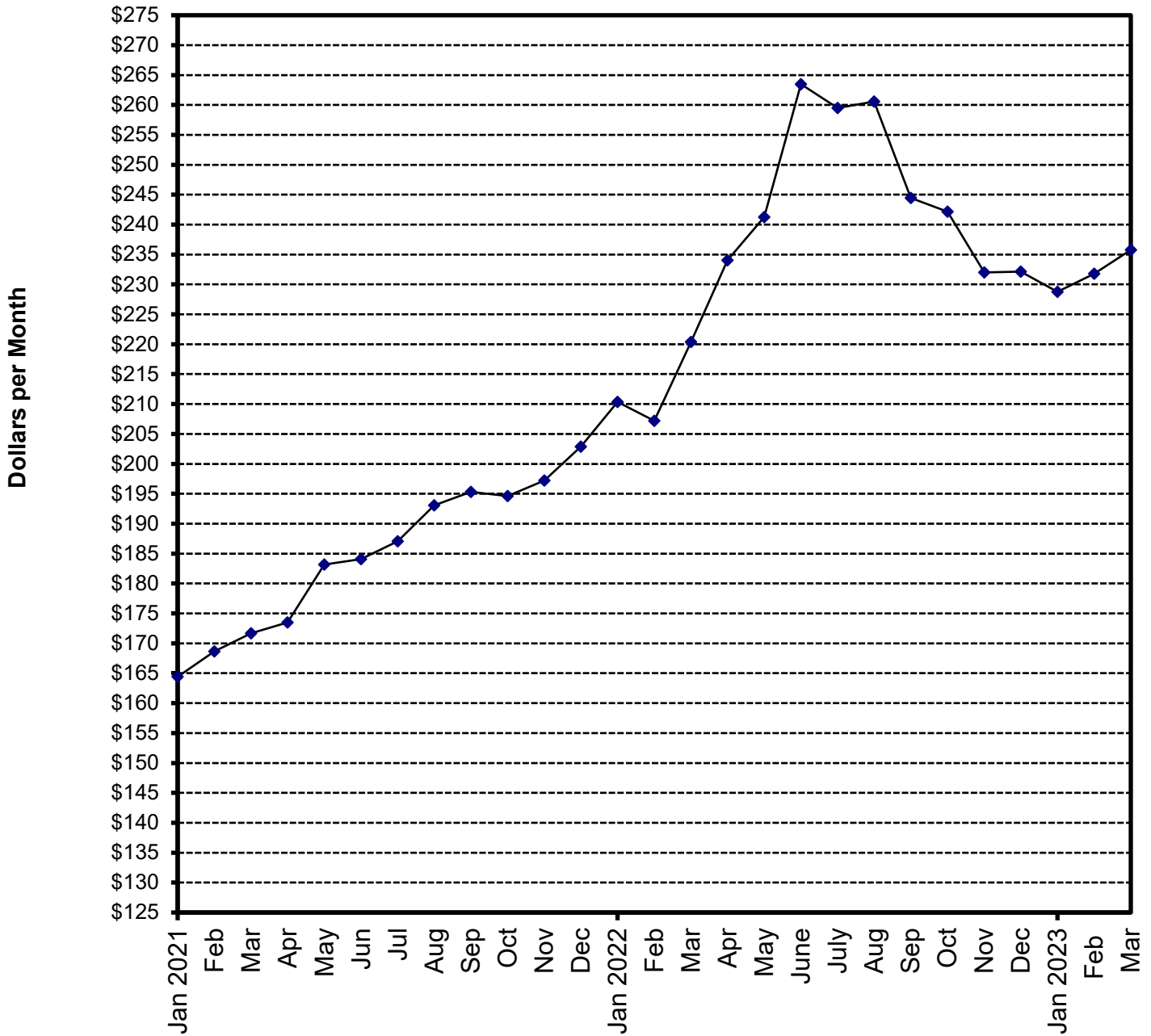
HAWAII ELECTRIC LIGHT COMPANY, INC.
2023 Cumulative Reconciliation Balance

| Month | (1) YTD FOA Reconciliation | Qtr | (2) FOA Rec Adjust Variance | (3) FOA Rec Less Variance | (4) Try to Collect | (5) Actual Collect | (6) Month-end Cumulative Balance |
|-------------|----------------------------------|-----|--------------------------------------|------------------------------------|--------------------------|--------------------------|---|
| January 21 | | | | | (261,333) | (275,071) | 12,258 |
| February 21 | 374,300 | [4] | (9,409) | 383,709 | (124,767) | (125,584) | 270,383 |
| March | | | | | (124,767) | (134,386) | 135,997 |
| April | | | | | (124,767) | (131,121) | 4,876 |
| May | (707,400) | (1) | (24,174) | (683,226) | 235,800 | 261,182 | (417,168) |
| June | | | | | 235,800 | 262,654 | (154,514) |
| July | | | | | 235,800 | 253,310 | 98,796 |
| August | (80,900) | [2] | 45,882 | (126,782) | 26,967 | 29,218 | 1,232 |
| September | | | | | 26,967 | 28,336 | 29,568 |
| October | | | | | 26,967 | 27,747 | 57,315 |
| November | (794,600) | [3] | 21,130 | (815,730) | 264,867 | 280,992 | (477,423) |
| December | | | | | 264,867 | 292,531 | (184,892) |
| January 22 | | | | | 264,867 | 270,827 | 85,935 |
| February 22 | (849,900) | [4] | 44,569 | (894,469) | 283,300 | 291,654 | (516,880) |
| March | | | | | 283,300 | 304,924 | (211,956) |
| April | | | | | 283,300 | 310,129 | 98,173 |
| May | (2,364,200) | [1] | 35,938 | (2,400,138) | 788,067 | 865,010 | (1,436,955) |
| June | | | | | 788,067 | 818,932 | (618,023) |
| July | | | | | 788,067 | 790,896 | 172,873 |
| August | (1,068,900) | [2] | 134,637 | (1,203,537) | 356,300 | 361,221 | (669,443) |
| September | | | | | 356,300 | 365,659 | (303,784) |
| October | | | | | 356,300 | 370,642 | 66,858 |
| November | 492,400 | [3] | 17,109 | 475,291 | (164,133) | (159,923) | 382,226 |
| December | | | | | (164,133) | (166,766) | 215,460 |
| January 23 | | | | | (164,133) | (156,998) | 58,462 |
| February | 219,500 | [4] | 15,919 | 203,581 | (73,167) | | |
| March | | | | | (73,167) | | |

NOTES:

- Col(1): Quarterly FOA reconciliation amounts. (Refer to Attachment 6)
A positive number is an over-collection. A negative number is an under-collection.
- Col(2): FOA reconciliation adjustment variance accumulated during the last three months, starting with the fourth prior month; the difference between the estimated recorded sales used to derive the \$/kwh adjustment and the actual recorded sales.
(Col(5)-Col(4))
- Col(3): FOA reconciliation generated in the current quarter. The YTD FOA reconciliation difference minus the adjustment variance. Col(1)-Col(2)
- Col(4): Amount that the FOA reconciliation adjustment is trying to collect. (Col(1) * 1/3)
- Col(5): Actual collected amount. (recorded sales * \$/kwh adjustment/1.09751)
- Col(6): Cumulative balance of the FOA reconciliation (Previous balance + Col(3) + Col(5))

Hawaii Electric Light Company, Inc. Residential Bill at 500 KWH/Month Consumption



**HAWAII ELECTRIC LIGHT COMPANY, INC.
FUEL OIL ADJUSTMENT FACTOR DATA**

| <u>EFFECTIVE DATE</u> | <u>FUEL FACTOR</u> | | <u>RESIDENTIAL BILL (\$)</u> |
|-----------------------|--------------------|---|------------------------------|
| | <u>CENTS / KWH</u> | <u>RESIDENTIAL & COMMERCIAL @ 500 KWH</u> | |
| January 1, 2019 | 6.867 | 187.86 | 224.86 |
| February 1, 2019 | 14.631 | 174.25 | 208.53 |
| March 1, 2019 | 14.976 | 176.1 | 210.75 |
| April 1, 2019 | 16.469 | 183.12 | 219.17 |
| May 1, 2019 | 17.396 | 188.74 | 225.93 |
| June 1, 2019 | 17.318 | 187.89 | 224.90 |
| July 1, 2019 | 16.450 | 183.46 | 219.63 |
| August 1, 2019 | 15.331 | 178.14 | 213.25 |
| September 1, 2019 | 14.845 | 175.70 | 210.32 |
| October 1, 2019 | 14.692 | 174.93 | 209.40 |
| November 1, 2019 | 16.302 | 181.76 | 217.59 |
| December 1, 2019 | 16.288 | 181.82 | 217.67 |
| | | | |
| January 1, 2020 | 16.768 | 185.37 | 221.88 |
| February 1, 2020 | 17.547 | 189.22 | 226.49 |
| March 1, 2020 | 17.424 | 188.72 | 225.90 |
| April 1, 2020 | 15.644 | 179.61 | 214.96 |
| May 1, 2020 | 11.215 | 157.94 | 188.96 |
| June 1, 2020 | 10.575 | 151.51 | 181.25 |
| July 1, 2020 | 11.359 | 154.68 | 185.07 |
| August 1, 2020 | 14.389 | 170.16 | 203.65 |
| September 1, 2020 | 14.569 | 171.01 | 204.67 |
| October 1, 2020 | 14.274 | 169.56 | 202.93 |
| November 1, 2020 | 13.426 | 163.74 | 195.96 |
| December 1, 2020 | 13.032 | 161.87 | 193.70 |
| | | | |
| January 1, 2021 | 13.543 | 164.41 | 196.74 |
| February 1, 2021 | 14.523 | 168.63 | 201.81 |
| March 1, 2021 | 15.091 | 171.67 | 205.45 |
| April 1, 2021 | 15.486 | 173.51 | 207.68 |
| May 1, 2021 | 16.982 | 183.19 | 219.28 |
| June 1, 2021 | 16.726 | 184.08 | 220.35 |
| July 1, 2021 | 17.040 | 187.04 | 223.92 |
| August 1, 2021 | 18.134 | 193.08 | 231.16 |
| September 1, 2021 | 18.588 | 195.30 | 233.83 |
| October 1, 2021 | 18.447 | 194.63 | 233.01 |
| November 1, 2021 | 19.470 | 197.22 | 236.14 |
| December 1, 2021 | 20.549 | 202.87 | 242.91 |
| | | | |
| January 1, 2022 | 20.942 | 210.36 | 251.90 |
| February 1, 2022 | 20.361 | 207.20 | 248.09 |
| March 1, 2022 | 22.943 | 220.40 | 263.93 |
| April 1, 2022 | 25.717 | 234.05 | 280.30 |
| May 1, 2022 | 27.068 | 241.26 | 288.97 |
| June 1, 2022 | 31.165 | 263.48 | 315.62 |
| July 1, 2022 | 30.355 | 259.50 | 310.86 |
| August 1, 2022 | 30.507 | 260.56 | 312.13 |
| September 1, 2022 | 27.322 | 244.46 | 292.81 |
| October 1, 2022 | 26.850 | 242.17 | 290.06 |
| November 1, 2022 | 24.879 | 231.99 | 277.85 |
| December 1, 2022 | 24.880 | 232.14 | 278.03 |
| | | | |
| January 1, 2023 | 24.245 | 228.78 | 273.99 |
| February 1, 2023 | 24.918 | 231.81 | 277.63 |
| March 1, 2023 | 25.651 | 235.76 | 282.37 |

**HAWAII ELECTRIC LIGHT COMPANY, INC.
RESIDENTIAL SURCHARGE DATA**

| EFFECTIVE DATE | DESCRIPTION OF SURCHARGE | RATE |
|----------------------------|--|---------------------------|
| 1/1/2020-10/31/2020 | INTERIM RATE ADJUSTMENT 2019 | 4.0900 PERCENT ON BASE |
| 1/1/2020-6/30/2020 | RESIDENTIAL PBF SURCHARGE ADJUSTMENT | 0.7437 CENTS/KWH |
| 2/1/2020- 2/29/2020 | PURCHASED POWER ADJUSTMENT CLAUSE | 1.7631 CENTS/KWH |
| 3/1/2020- 3/31/2020 | PURCHASED POWER ADJUSTMENT CLAUSE | 1.7883 CENTS/KWH |
| 4/1/2020- 4/30/2020 | PURCHASED POWER ADJUSTMENT CLAUSE | 1.7717 CENTS/KWH |
| 4/1/2020- 4/30/2020 | SOLARSAVER ADJUSTMENT | -0.0267 CENTS/KWH |
| 05/01/2020-5/31/2020 | PURCHASED POWER ADJUSTMENT CLAUSE | 1.8396 CENTS/KWH |
| 5/1/2020 -3/31/2021 | SOLARSAVER ADJUSTMENT | 0.0000 CENTS/KWH |
| 06/01/2020-6/30/2020 | PURCHASED POWER ADJUSTMENT CLAUSE | 1.8413 CENTS/KWH |
| 6/1/2020-5/31/2021 | RBA RATE ADJUSTMENT | -0.4623 CENTS/KWH |
| 07/01/2020-7/31/2020 | PURCHASED POWER ADJUSTMENT CLAUSE | 1.8592 CENTS/KWH |
| 7/1/2020- 6/30/2021 | RESIDENTIAL PBF SURCHARGE ADJUSTMENT | 0.5882 CENTS/KWH |
| 7/1/2020 | GREEN INFRASTRUCTURE FEE | 1.19 DOLLARS/MONTH |
| 8/1/2020-8/31/2020 | PURCHASED POWER ADJUSTMENT CLAUSE | 1.9261 CENTS/KWH |
| 9/1/2020-9/30/2020 | PURCHASED POWER ADJUSTMENT CLAUSE | 1.9161 CENTS/KWH |
| 10/1/2020-10/31/2020 | PURCHASED POWER ADJUSTMENT CLAUSE | 1.9222 CENTS/KWH |
| 11/1/2020-11/30/2020 | PURCHASED POWER ADJUSTMENT CLAUSE | 1.9106 CENTS/KWH |
| 11/1/2020 | Final Rates (TY2019), Docket No. 2018-0368, Order No. 37395 | |
| 12/1/2020-12/31/2020 | PURCHASED POWER ADJUSTMENT CLAUSE | 1.9291 CENTS/KWH |
| 1/1/2021-1/31/2021 | PURCHASED POWER ADJUSTMENT CLAUSE | 1.9133 CENTS/KWH |
| 1/1/2021-6/30/2021 | GREEN INFRASTRUCTURE FEE | 1.25 DOLLARS/MONTH |
| 2/1/2021-2/28/2021 | PURCHASED POWER ADJUSTMENT CLAUSE | 1.7782 CENTS/KWH |
| 3/1/2021-3/31/2021 | PURCHASED POWER ADJUSTMENT CLAUSE | 1.8172 CENTS/KWH |
| 4/1/2021-4/30/2021 | PURCHASED POWER ADJUSTMENT CLAUSE | 1.7966 CENTS/KWH |
| 4/1/2021-4/30/2021 | SOLARSAVER ADJUSTMENT | -0.0033 CENTS/KWH |
| 5/1/2021-5/31/2021 | PURCHASED POWER ADJUSTMENT CLAUSE | 2.2319 CENTS/KWH |
| 5/1/2021-3/31/2022 | SOLARSAVER ADJUSTMENT | 0.0000 CENTS/KWH |
| 6/1/2021-6/30/2021 | PURCHASED POWER ADJUSTMENT CLAUSE | 2.2333 CENTS/KWH |
| 6/1/2021-12/31/2021 | RBA RATE ADJUSTMENT | -0.0299 CENTS/KWH |
| 7/1/2021-12/31/2021 | GREEN INFRASTRUCTURE FEE | 1.19 DOLLARS/MONTH |
| 7/1/2021-7/31/2021 | PURCHASED POWER ADJUSTMENT CLAUSE | 2.4649 CENTS/KWH |
| 7/1/2021-06/30/2022 | RESIDENTIAL PBF SURCHARGE ADJUSTMENT | 0.6478 CENTS/KWH |
| 8/1/2021-8/31/2021 | PURCHASED POWER ADJUSTMENT CLAUSE | 2.4876 CENTS/KWH |
| 8/1/2021-10/31/2021 | RESIDENTIAL DSM ADJUSTMENT | 0.0893 CENTS/KWH |
| 9/1/2021-9/30/2021 | PURCHASED POWER ADJUSTMENT CLAUSE | 2.4776 CENTS/KWH |
| 10/1/2021-10/31/2021 | PURCHASED POWER ADJUSTMENT CLAUSE | 2.4838 CENTS/KWH |
| 11/1/2021-11/30/2021 | PURCHASED POWER ADJUSTMENT CLAUSE | 2.0761 CENTS/KWH |
| 11/1/2021 | RESIDENTIAL DSM ADJUSTMENT | -0.0051 CENTS/KWH |
| 12/1/2021-12/31/2021 | PURCHASED POWER ADJUSTMENT CLAUSE | 2.1263 CENTS/KWH |
| 1/1/2022-06/30/2022 | GREEN INFRASTRUCTURE FEE | 1.25 DOLLARS/MONTH |
| 1/1/2022-5/31/2022 | RBA RATE ADJUSTMENT | 1.0380 CENTS/KWH |
| 1/1/2022-1/31/2022 | PURCHASED POWER ADJUSTMENT CLAUSE | 2.1529 CENTS/KWH |
| 2/1/2022-2/28/2022 | PURCHASED POWER ADJUSTMENT CLAUSE | 2.0987 CENTS/KWH |
| 2/1/2022- 4/30/2022 | RESIDENTIAL DSM ADJUSTMENT | -0.0043 CENTS/KWH |
| 3/1/2022-3/31/2022 | PURCHASED POWER ADJUSTMENT CLAUSE | 2.1564 CENTS/KWH |
| 4/1/2022-4/30/2022 | PURCHASED POWER ADJUSTMENT CLAUSE | 2.1141 CENTS/KWH |
| 4/1/2022-4/30/2022 | SOLARSAVER ADJUSTMENT | -0.0011 CENTS/KWH |
| 5/1/2022-5/31/2022 | PURCHASED POWER ADJUSTMENT CLAUSE | 2.2917 CENTS/KWH |
| 5/1/2022 | SOLARSAVER ADJUSTMENT | 0.0000 CENTS/KWH |
| 5/1/2022-7/31/2022 | RESIDENTIAL DSM ADJUSTMENT | -0.0912 CENTS/KWH |
| 6/1/2022-6/30/2022 | PURCHASED POWER ADJUSTMENT CLAUSE | 2.3052 CENTS/KWH |
| 6/1/2022-12/31/2022 | RBA RATE ADJUSTMENT | 1.3708 CENTS/KWH |
| 7/1/2022-7/31/2022 | PURCHASED POWER ADJUSTMENT CLAUSE | 2.3333 CENTS/KWH |
| 7/1/2022-12/31/2022 | GREEN INFRASTRUCTURE FEE | 1.18 DOLLARS/MONTH |
| 7/1/2022 | RESIDENTIAL PBF SURCHARGE ADJUSTMENT | 0.6488 CENTS/KWH |
| 8/1/2022-8/31/2022 | PURCHASED POWER ADJUSTMENT CLAUSE | 2.2981 CENTS/KWH |
| 8/1/2022-10/31/2022 | RESIDENTIAL DSM ADJUSTMENT | 0.0035 CENTS/KWH |
| 9/1/2022-9/30/2022 | PURCHASED POWER ADJUSTMENT CLAUSE | 2.2638 CENTS/KWH |
| 10/1/2022-10/31/2022 | PURCHASED POWER ADJUSTMENT CLAUSE | 2.2771 CENTS/KWH |
| 11/1/2022-11/30/2022 | PURCHASED POWER ADJUSTMENT CLAUSE | 2.2180 CENTS/KWH |
| 11/1/2022 | RESIDENTIAL DSM ADJUSTMENT | -0.0017 CENTS/KWH |
| 12/1/2022-12/31/2022 | PURCHASED POWER ADJUSTMENT CLAUSE | 2.2472 CENTS/KWH |
| 1/1/2023-1/31/2023 | PURCHASED POWER ADJUSTMENT CLAUSE | 2.2701 CENTS/KWH |
| 1/1/2023-06/30/2023 | GREEN INFRASTRUCTURE FEE | 1.23 DOLLARS/MONTH |
| 1/1/2023 | RBA RATE ADJUSTMENT | 1.3006 CENTS/KWH |
| 2/1/2023-2/28/2023 | PURCHASED POWER ADJUSTMENT CLAUSE | 2.2018 CENTS/KWH |
| 2/1/2023 | RESIDENTIAL DSM ADJUSTMENT | 0.0008 CENTS/KWH |
| 3/1/2023-3/31/2023 | PURCHASED POWER ADJUSTMENT CLAUSE | 2.2576 CENTS/KWH |

**Base charges include customer charge, demand charge, energy charge, power factor adjustment, voltage discount, and minimum charge.

Calculations of the Average Residential Customer Bill

| | Rate | | Charge (\$) at 500 Kwh | | | |
|--|-----------------|------------|------------------------|----------|------------|--------|
| | 2/01/23 | 3/01/23 | 2/01/23 | 3/01/23 | Difference | |
| Base Rates | effective date: | 11/01/2020 | 11/01/2020 | | | |
| Base Fuel Energy Charge | ¢/kwh | - | - | \$0.00 | \$0.00 | \$0.00 |
| Non-Fuel Energy Charge | ¢/kwh | | | \$73.74 | \$73.74 | \$0.00 |
| First 300 kWh per month | ¢/kwh | 13.4059 | 13.4059 | \$40.22 | \$40.22 | \$0.00 |
| Next 700 kWh per month | ¢/kwh | 16.7577 | 16.7577 | \$33.52 | \$33.52 | \$0.00 |
| Customer Charge | \$ | 11.50 | 11.50 | \$11.50 | \$11.50 | \$0.00 |
| Total Base Charges | | | | \$85.24 | \$85.24 | \$0.00 |
| Interim Rate Adjustment 2019 TY | % on base | 0.0000% | 0.0000% | \$0.00 | \$0.00 | \$0.00 |
| RBA Rate Adjustment | ¢/kwh | 1.3006 | 1.3006 | \$6.50 | \$6.50 | \$0.00 |
| Purchased Power Adj. Clause | ¢/kwh | 2.2018 | 2.2576 | \$11.01 | \$11.29 | \$0.28 |
| PBF Surcharge | ¢/kwh | 0.6488 | 0.6488 | \$3.24 | \$3.24 | \$0.00 |
| DSM Adjustment | ¢/kwh | 0.0008 | 0.0008 | \$0.00 | \$0.00 | \$0.00 |
| SolarSaver Adjustment | ¢/kwh | 0.0000 | 0.0000 | \$0.00 | \$0.00 | \$0.00 |
| Energy Cost Recovery | ¢/kwh | 24.9180 | 25.6510 | \$124.59 | \$128.26 | \$3.67 |
| Green Infrastructure Fee | \$ | 1.23 | 1.23 | \$1.23 | \$1.23 | \$0.00 |
| Avg Residential Bill at 500 kwh | | | | \$231.81 | \$235.76 | |

| | |
|-----------------------|--------|
| Increase (Decrease -) | \$3.95 |
| % Change | 1.70% |

| | Rate | | Charge (\$) at 600 Kwh | | | |
|--|-----------------|------------|------------------------|----------|------------|--------|
| | 2/01/23 | 3/01/23 | 2/01/23 | 3/01/23 | Difference | |
| Base Rates | effective date: | 11/01/2020 | 11/01/2020 | | | |
| Base Fuel/Energy Charge | ¢/kwh | - | - | \$0.00 | \$0.00 | \$0.00 |
| Non-Fuel Energy Charge | ¢/kwh | | | \$90.49 | \$90.49 | \$0.00 |
| First 300 kWh per month | ¢/kwh | 13.4059 | 13.4059 | \$40.22 | \$40.22 | \$0.00 |
| Next 700 kWh per month | ¢/kwh | 16.7577 | 16.7577 | \$50.27 | \$50.27 | \$0.00 |
| Customer Charge | \$ | 11.50 | 11.50 | \$11.50 | \$11.50 | \$0.00 |
| Total Base Charges | | | | \$101.99 | \$101.99 | \$0.00 |
| Interim Rate Adjustment 2019 TY | % on base | 0.0000% | 0.0000% | \$0.00 | \$0.00 | \$0.00 |
| RBA Rate Adjustment | ¢/kwh | 1.3006 | 1.3006 | \$7.80 | \$7.80 | \$0.00 |
| Purchased Power Adj. Clause | ¢/kwh | 2.2018 | 2.2576 | \$13.21 | \$13.55 | \$0.34 |
| PBF Surcharge | ¢/kwh | 0.6488 | 0.6488 | \$3.89 | \$3.89 | \$0.00 |
| DSM Adjustment | ¢/kwh | 0.0008 | 0.0008 | \$0.00 | \$0.00 | \$0.00 |
| SolarSaver Adjustment | ¢/kwh | 0.0000 | 0.0000 | \$0.00 | \$0.00 | \$0.00 |
| Energy Cost Recovery | ¢/kwh | 24.9180 | 25.6510 | \$149.51 | \$153.91 | \$4.40 |
| Green Infrastructure Fee | \$ | 1.23 | 1.23 | \$1.23 | \$1.23 | \$0.00 |
| Avg Residential Bill at 600 kwh | | | | \$277.63 | \$282.37 | |

| | |
|-----------------------|--------|
| Increase (Decrease -) | \$4.74 |
| % Change | 1.71% |

From: puc@hawaii.gov
To: [Mounthongdy, Christine](#)
Subject: Hawaii PUC eFiling Confirmation of Filing
Date: Friday, February 24, 2023 9:30:17 AM

[This email is coming from an EXTERNAL source. Please use caution when opening attachments or links in suspicious email.]

Your eFile document has been filed with the Hawaii Public Utilities commission on 2023 Feb 24 AM 09:28. The mere fact of filing shall not waive any failure to comply with Hawaii Administrative Rules Chapter 6-61, Rules of Practice and Procedure Before the Public Utilities Commission, or any other application requirements. Your confirmation number is CHRI23092815799. If you have received this email in error please notify the Hawaii Public Utilities Commission by phone at 808 586-2020 or email at hawaii.puc@hawaii.gov.