



August 27, 2020

The Honorable Chair and Members  
of the Hawai'i Public Utilities Commission  
Kekuanao'a Building, First Floor  
465 South King Street  
Honolulu, Hawai'i 96813

Dear Commissioners:

Subject: Hawai'i Electric Light Energy Cost Recovery Factor for September 2020

Hawai'i Electric Light Company, Inc.'s ("Hawai'i Electric Light") Energy Cost Recovery factor for September 2020 is 14.569 cents per kilowatt-hour ("kWh"), an increase of 0.180 cents per kWh from last month. A residential customer consuming 500 kWh of electricity will be paying \$171.01, an increase of \$0.85 compared to rates effective August 1, 2020. The increase in the residential bill is due to the increase in the Energy Cost Recovery Factor (+\$0.90), partially offset by the decrease in the Purchased Power Adjustment Clause rate (-\$0.05).

Hawai'i Electric Light's fuel composite cost of generation increased 62.57 cents per million BTU to 993.86 cents per million BTU. The composite cost of distributed generation increased 0.702 cents per kWh to 14.630 cents per kWh. The composite cost of purchased energy decreased 0.712 cents per kWh to 13.506 cents per kWh.

The attached sheets set forth the energy cost recovery factor in cents per kWh for each rate schedule that is applicable for pro rata use beginning September 1, 2020.

Sincerely,

/s/ Sharon M. Suzuki  
\_\_\_\_\_  
Sharon M. Suzuki  
President  
Maui County and Hawai'i Island Utilities

Attachments

cc: Division of Consumer Advocacy

## HAWAII ELECTRIC LIGHT COMPANY, INC.

ENERGY COST RECOVERY FACTOR

	<u>EFFECTIVE DATES</u>		
	<u>8/01/20</u>	<u>9/01/20</u>	<u>Change</u>
<u>Composite Cost</u>			
Generation, ¢/mmbtu	931.29	993.86	62.57
Dispersed Generation Energy, ¢/kWh	13.929	14.630	0.70
Purchased Energy, ¢/kWh	14.218	13.506	(0.71)
<u>Residential Schedule "R"</u>			
Energy Cost Recovery - ¢/kWh	14.389	14.569	0.18
<u>Others - "G,J,P,F"</u>			
Energy Cost Recovery - ¢/kWh	14.389	14.569	0.18
Residential Customer with:			
500 KWH Consumption - \$/Bill	\$170.16	\$171.01	\$0.85
600 KWH Consumption - \$/Bill	\$203.65	\$204.67	\$1.02

HAWAII ELECTRIC LIGHT COMPANY, INC.  
ENERGY COST RECOVERY (ECR) FILING

ENERGY COST RECOVERY (ECR) FILING - September 1, 2020 (Page 1 of 2)

Line

1 Effective Date September 1, 2020  
2 Supercedes Factors of August 1, 2020

**GENERATION COMPONENT**

<b><u>CENTRAL STATION WITH WIND/HYDRO COMPONENT</u></b>			
FUEL PRICES, ¢/mmbtu			
3			
4	Hill Industrial		776.95
5	Puna Industrial		797.77
6	Keahole Diesel		1,129.00
6a	Keahole ULSD		1,512.80
7	Waimea ULSD Diesel		1,475.58
8	Hilo Diesel		1,094.36
8a	Hilo (Kanoelehua) ULSD Diesel <sup>1</sup>		1,445.88
9	Puna Diesel		1,092.83
10	Wind		0.00
11	Hydro		0.00
BTU MIX, %			
12			
13	Hill Industrial		32.432
14	Puna Industrial		6.373
15	Keahole Diesel		49.149
15a	Keahole ULSD		0.393
16	Waimea ULSD Diesel		0.018
17	Hilo Diesel		2.627
17a	Hilo (Kanoelehua) ULSD Diesel <sup>1</sup>		1.036
18	Puna Diesel		7.888
19	Wind		0.000
20	Hydro		0.084
			100.000
21	COMPOSITE COST OF GENERATION, CENTRAL STATION + WIND/HYDRO ¢/mmbtu		993.86
22	% Input to System kWh Mix		54.113
EFFICIENCY FACTOR, mmbtu/kWh			
	(A)	(B)	(C)
			(D)
			Percent of
			Centrl Stn +
			Wind/Hydro
			Weighted
	Fuel Type	Eff Factor	Eff Factor
		mmbtu/kwh	
23	Industrial	0.014389	38.805
24	Diesel	0.010580	61.111
25	Other	0.011999	0.0840
			0.000010
			100.0000
(Lines 23, 24, 25): Col(B) x Col(C) = Col(D)			
26	Weighted Efficiency Factor, mmbtu/kWh [Lines 23(D) + 24(D) + 25(D)]		0.0120600
27	WEIGHTED COMPOSITE CENTRAL STATION + WIND/HYDRO GENERATION COST, ¢/kWh (Lines (21 x 22 x 26))		6.48596
28	BASE CENTRAL STATION + WIND/HYDRO GENERATION COST, ¢/mmbtu		0.00
29	Base % Input to Sys kWh Mix		0.00
30	Efficiency Factor, mmbtu/kwh		0.000000
31	WEIGHTED BASE CENTRAL STATION + WIND/HYDRO GENERATION COST ¢/kWh (Lines (28 x 29 x 30))		0.00000
32	COST LESS BASE (Line 27 - 31)		6.48596
33	Revenue Tax Req Multiplier		1.0975
34	CENTRAL STATION + WIND/HYDRO GENERATION FACTOR, ¢/kWh (Line (32 x 33))		7.11834

<b><u>DG ENERGY COMPONENT</u></b>		
35	COMPOSITE COST OF DG ENERGY, ¢/kWh	14.630
36	% Input to System kWh Mix	0.005
37	WEIGHTED COMPOSITE DG ENERGY COST, ¢/kWh (Lines 35 x 36)	0.00073
38	BASE DG ENERGY COMPOSITE COST	0.000
39	Base % Input to System kWh Mix	0.00
40	WEIGHTED BASE DG ENERGY COST, ¢/kWh (Line 38 x 39)	0.00000
41	Cost Less Base (Line 37 - 40)	0.00073
42	Loss Factor	1.072
43	Revenue Tax Req Multiplier	1.0975
44	DG FACTOR, ¢/kWh (Line 41 x 42 x 43)	0.00086

<b>SUMMARY OF TOTAL GENERATION FACTOR, ¢/kWh</b>		
45	Cntrl Stn+Wind/Hydro (line 34)	7.11834
46	DG (line 44)	0.00086
47	TOTAL GENERATION FACTOR, ¢/kWh (lines 45 + 46)	7.11920

<sup>1</sup> Hilo ULSD same location as Kanoelehua ULSD



**Hawaii Electric Light Company, Inc.**  
FUEL OIL INVENTORY PRICES FOR September 1, 2020

**INDUSTRIAL FUEL COSTS:**

	<u>HILO</u>	<u>PUNA</u>
Average Industrial Fuel Cost - \$/BBL	48.9481	48.9481
Land Transportation Cost - \$/BBL	--	1.3115
Industrial Costs For Filing - \$/BBL	48.9481	50.2596
Conversion Factors - mmbtu/BBL	6.30	6.30
Industrial Costs For Filing - ¢/mmbtu	<u>776.95</u>	<u>797.77</u>

**DIESEL FUEL COSTS:**

	KEAHOLE	PUNA CT-3	HILO
Average Diesel Fuel Cost - \$/BBL	62.5856	62.5856	62.5856
Land Transportation Cost - \$/BBL	3.5741	1.4543	1.5441
Diesel Costs For Filing - \$/BBL	66.1597	64.0398	64.1297
Conversion Factors - mmbtu/BBL	5.86	5.86	5.86
Diesel Costs For Filing - ¢/mmbtu	<u>1,129.00</u>	<u>1,092.83</u>	<u>1,094.36</u>

**ULSD FUEL COSTS:**

	KEAHOLE	WAIMEA	HILO	DISPERSED GENERATION
Average ULSD Fuel Cost - \$/BBL	81.8195	81.8195	81.8195	81.8195
Land Transportation Cost - \$/BBL	4.8640	2.7311	1.0294	-
ULSD Costs For Filing - \$/BBL	86.6835	84.5506	82.8488	81.8195
Conversion Factors - mmbtu/BBL	5.73	5.73	5.73	5.73
ULSD Costs For Filing - ¢/mmbtu	<u>1,512.80</u>	<u>1,475.58</u>	<u>1,445.88</u>	<u>1,427.91</u>

**Dispersed Generation, cents per kWh**

	<u>COMPOSITE COST OF DISP. GEN.</u>
BBIs Fuel:	8.7171
\$/BBI Inv Cost:	81.8195
Fuel \$ (Prod Sim Consumption x Unit Cost)	713.23
Net kWh (from Prod Sim)	4,875
cents/kWh:	<u>14.630</u>

HAWAII ELECTRIC LIGHT CO., INC.  
Estimated Weighted Average  
August 2020

	SHIPMAN INDUSTRIAL		HILL INDUSTRIAL		COST PER BARREL		
	BBL	COST	BBL	COST	EXCL LT	LT Total	
Balance at 07/31/2020	0	0.00	31,857	1,596,449.50			
Less: Est'd Inventory Addn			0	0.00			
Purchases: Estimate	xxxxxx	xxxxxxxxxxxxxxxxxxxx	xxxxxxxx	xxxxxxxxxxxxxxxxxxxx			
Actual	xxxxxx	xxxxxxxxxxxxxxxxxxxx	xxxxxxxx	xxxxxxxxxxxxxxxxxxxx			
Transfers out: Estimate	xxxxxx	xxxxxxxxxxxxxxxxxxxx	xxxxxxxx	xxxxxxxxxxxxxxxxxxxx			
Actual	xxxxxx	xxxxxxxxxxxxxxxxxxxx	xxxxxxxx	xxxxxxxxxxxxxxxxxxxx			
Transfers in: Estimate	0	0.00	(35,813)	(1,604,419.37)			
Actual	0	0.00	44,825	2,141,487.29			
Consumed: Estimate	0	0.00	39,140	1,801,715.11			
Actual	0	0.00	(39,426)	(1,847,423.13)			
Balance Per G/L 07/31/2020	<u>0</u>	<u>0.00</u>	<u>40,583</u>	<u>2,087,809.41</u>			
Purchases	xxxxxx	xxxxxxxxxxxxxxxxxxxx	xxxxxxxx	xxxxxxxxxxxxxxxxxxxx			
Transfer out	xxxxxx	xxxxxxxxxxxxxxxxxxxx	xxxxxxxx	xxxxxxxxxxxxxxxxxxxx			
Transfer in	0	0.00	36,300	1,633,219.71			
Consumed	<u>0</u>	<u>0.00</u>	<u>(42,240)</u>	<u>(1,965,958.76)</u>	106.5901	0.0000	106.5901
Balance @ 08/31/2020	0	0.00	34,643	1,755,070.36			
Inv From Offsite/Transfers	0	0.00	0	0.00			
Est'd Inventory Addition	0	0.00	0	0.00			
Fuel Balance @ 08/31/2020	<u>0</u>	<u>0.00</u>	<u>34,643</u>	<u>1,755,070.36</u>			
Reverse Fuel Balance	xxxxxx	0.00	xxxxxxx	(1,755,070.36)			
Fuel Bal @ Avg Price	xxxxxx	0.00	xxxxxxx	1,695,708.44			
Total @ 09/01/2020 Avg Price	<u>0</u>	<u>0.00</u>	<u>34,643</u>	<u>1,695,708.44</u>			

Weighted Avg Cost/BBL by Location #DIV/0! 50.6616

Weighted Avg Cost/BBL @ Avg Cost #DIV/0! 48.9481

**HAWAII ELECTRIC LIGHT CO., INC.**  
Estimated Weighted Average  
August 2020

PUNA INDUSTRIAL

	BBL	COST	LAND TRANSP	COST PER BARREL		TOTAL
				EXCLUDE LT	LT	
Balance at 07/31/2020	7,981	397,589.04	10,626.04			
Less: Est'd Inventory Addition	0	0.00	0.00			
Purchases: Estimate	XXXXXXXXXXXX	XXXXXXXXXXXX	XXXXXXXXXXXX			
Actual	XXXXXXXXXXXX	XXXXXXXXXXXX	XXXXXXXXXXXX			
Transfers out: Estimate	XXXXXXXXXXXX	XXXXXXXXXXXX	XXXXXXXXXXXX			
Actual	XXXXXXXXXXXX	XXXXXXXXXXXX	XXXXXXXXXXXX			
Transfers in: Estimate	(4,565)	(212,048.51)	(6,004.39)			
Actual	6,175	289,187.32	8,010.24			
Consumed: Estimate	5,218	240,197.99	6,494.91			
Actual	<u>(5,650)</u>	<u>(243,737.26)</u>	<u>(7,032.62)</u>			
Balance Per G/L 07/31/2020	<u>9,159</u>	<u>471,188.58</u>	<u>12,094.18</u>			
Purchases	XXXXXXXXXXXX	XXXXXXXXXXXX	XXXXXXXXXXXX			
Transfer out	XXXXXXXXXXXX	XXXXXXXXXXXX	XXXXXXXXXXXX			
Transfer in	5,161	238,616	6,788.31			
Consumed	(5,110)	<u>(237,832.61)</u>	(6,803.54)	46.5426	1.3314	47.8740
Balance @ 08/31/2020	<u>9,210</u>	<u>471,972.26</u>	<u>12,078.95</u>			
Inventory From Offsite/Transfers	0	0.00	0.00			
Est'd Inventory Addition	0	0.00	0.00			
Fuel Bal @ Avg Price	<u>9,210</u>	<u>471,972.26</u>	<u>12,078.95</u>		<u>1.3115</u>	
Reverse Fuel Balance	XXXXXXXXXXXX	(471,972.26)	XXXXXXXXXXXX			
Fuel Balance @ Avg Price	XXXXXXXXXXXX	450,811.84	XXXXXXXXXXXX			
Total @ 09/01/2020 Avg Price	<u>9,210</u>	<u>450,811.84</u>	<u>12,078.95</u>			

Weighted Avg Cost/BBL by Location

51.2456

1.3115

Weighted Avg Cost/BBL @ Avg Cost

48.9481

1.3115

**HAWAII ELECTRIC LIGHT CO., INC.**  
Estimated Weighted Average  
August 2020

KEAHOLE DIESEL

HS Diesel	BBL	GALLONS	COST EXCLUDE LT	LAND TRANSP	COST PER EXCLUD LT	BARREL LT	TOTAL
Balance at 07/31/2020	38,315.7	1,609,258.0	2,048,791.4	139,030.9			
Less: Est'd Inventory Addition	0.0	0.0	0.0	0.0			
Purchases: Estimate	(2,090.0)	(87,780.0)	(104,082.0)	0.0			
Actual	2,072.1	87,028.0	127,081.5	0.0			
Transfers out: Estimate		xxxxxxxxxxxxxxxx	xxxxxxxxxxxxxxxx	xxxxxxxxxxxxxxxx			
Actual		xxxxxxxxxxxxxxxx	xxxxxxxxxxxxxxxx	xxxxxxxxxxxxxxxx			
Transfers in: Estimate	(44,359.7)	(1,863,109.0)	(2,381,898.2)	(138,615.3)			
Actual	46,411.3	1,949,273.0	2,720,000.3	161,510.57			
Consumed: Estimate	59,468.0	2,497,655.0	2,871,669.9	172,166.40			
Actual	(59,524.0)	(2,500,006.0)	(3,026,585.7)	(151,028.1)	50.8465		
Balance Per G/L 07/31/2020	40,293.3	1,692,319	2,254,977.21	183,064.45	55.9641		
Purchases	xxxxxxxxxxxx	xxxxxxxxxxxxxxxx	xxxxxxxxxxxxxxxx	xxxxxxxxxxxxxxxx			
Transfer out	xxxxxxxxxxxx	xxxxxxxxxxxxxxxx	xxxxxxxxxxxxxxxx	xxxxxxxxxxxxxxxx			
Transfer in	43,922.2	1,844,734.0	2,661,030.7	137,248.2	60.5850		
Consumed	(44,709.2)	(1,877,786.0)	(2,487,484.7)	(162,230.20)	55.6370	3.6286	59.2656
Balance @ 08/31/2020	44,229.8	1,857,653	2,735,704.97	158,082.45	61.8520		
Inventory From Offsite/Transfers	0.0	0.0	0.0	0.00			
Est'd Inventory Addition	0.0	0	0.0	0.00			
Fuel Balance @ Avg Price	44,229.8	1,857,653	2,735,704.97	158,082.45	61.8520		
Reverse Fuel Balance	xxxxxxxxxxxx	xxxxxxxxxxxxxxxx	(2,735,705.0)	xxxxxxxxxxxxxxxx			
Fuel Balance @ Avg Price	xxxxxxxxxxxx	xxxxxxxxxxxxxxxx	2,768,149.4	xxxxxxxxxxxxxxxx			
Total @ 09/01/2020 Avg Price	44,229.8	1,857,653	2,768,149.41	158,082.45	62.5856		

Weighted Avg Cost/BBL by Location

61.8520

3.5741

Weighted Avg Cost/BBL @ Avg Cost

62.5856

3.5741



**HAWAII ELECTRIC LIGHT CO., INC.**  
Estimated Weighted Average  
August 2020

PUNA CT-3

HS Diesel	BBL	GALLONS	COST EXCLUD LT	LAND TRANSP	COST PER EXCL LT	BARREL LT	TOTAL
Balance at 07/31/2020	10,588.5	444,719.0	646,935.3	20,366.3			
Less: Est'd Inven Addition	0.0	0.0	0.0	0.0			
Purchases: Estimate		XXXXXXXXXXXXXXXXXX	XXXXXXXXXXXXXXXXXX	XXXXXXXXXXXXXXXXXX			
Actual		XXXXXXXXXXXXXXXXXX	XXXXXXXXXXXXXXXXXX	XXXXXXXXXXXXXXXXXX			
Transfers out: Estimate		XXXXXXXXXXXXXXXXXX	XXXXXXXXXXXXXXXXXX	XXXXXXXXXXXXXXXXXX			
Actual		XXXXXXXXXXXXXXXXXX	XXXXXXXXXXXXXXXXXX	XXXXXXXXXXXXXXXXXX			
Transfers in: Estimate	(12,725.4)	(534,467.0)	(757,472.5)	(15,499.5)			
Actual	7,757.6	325,819.0	470,897.3	9,626.4			
Consumed: Estimate	7,717.6	324,140.0	372,678.8	11,390.0			
Actual	(6,730.1)	(282,666.0)	(365,138.8)	(9,931.9)			
Balance Per G/L 07/31/2020	6,608.2	277,545	367,900.15	15,951.25			
Purchases		XXXXXXXXXXXXXXXXXX	XXXXXXXXXXXXXXXXXX	XXXXXXXXXXXXXXXXXX			
Transfer out		XXXXXXXXXXXXXXXXXX	XXXXXXXXXXXXXXXXXX	XXXXXXXXXXXXXXXXXX			
Transfer in	6,683.5	280,707.0	419,503.0	8,140.5	62.7670		
Consumed	(10,150.2)	(426,309)	(564,727.35)	(19,523.20)	55.6370	1.9234	57.5604
Balance @ 08/31/2020	3,141.5	131,943	222,675.81	4,568.55	70.8820		
Inven From Offsite/Transfers	0.0	0	0.00	0.00			
Est'd Inventory Addition	0.0	0	0.00	0.00			
Fuel Balance @ 08/31/2020	3,141.5	131,943	222,675.81	4,568.55	70.8820		
Reverse Fuel Balance		XXXXXXXXXXXXXXXXXX	(222,675.81)	XXXXXXXXXXXXXXXXXX			
Fuel Balance @ Avg Price		XXXXXXXXXXXXXXXXXX	196,612.57	XXXXXXXXXXXXXXXXXX			
Total @ 09/01/2020 Avg Price	3,141.5	131,943	196,612.57	4,568.55	62.5856		

Weighted Avg Cost/BBL by Location 70.8820 1.4543

Weighted Avg Cost/BBL @ Avg Cost 62.5856 1.4543

HAWAII ELECTRIC LIGHT CO., INC.  
Estimated Weighted Average  
August 2020

TOTAL HILO HS-DIESEL

HS Diesel	BBL	GALLONS	COST EXCLUDE LT	LAND TRANSP	COST PER EXCL LT	BARREL LT	TOTAL
Balance at 07/31/2020	1314.9	55,226	62,877	1,011			
Less: Est'd Inven Addition	0.0	0	0	0			
Purchases: Estimate		XXXXXXXXXXXX	XXXXXXXXXXXX	XXXXXXXXXXXX			
Actual		XXXXXXXXXXXX	XXXXXXXXXXXX	XXXXXXXXXXXX			
Transfers out: Estimate		XXXXXXXXXXXX	XXXXXXXXXXXX	XXXXXXXXXXXX			
Actual		XXXXXXXXXXXX	XXXXXXXXXXXX	XXXXXXXXXXXX			
Transfers in: Estimate	-190.0	-7980.0	-11340.1	-204.3			
Actual	188.1	7899.0	11209.8	202.3			
Consumed: Estimate	988.9	41534.0	47753.6	1089.5			
Actual	-673.4	-28281.0	-19835.4	-208.8			
Balance Per G/L 07/31/2020	1628.5	68,398	90,665.06	1,889.92	55.6732		
Purchases		XXXXXXXXXXXX	XXXXXXXXXXXX	XXXXXXXXXXXX			
Transfer out		XXXXXXXXXXXX	XXXXXXXXXXXX	XXXXXXXXXXXX			
Transfer in	567.0	23813.0	35642.7	609.6	#DIV/0!		
Consumed	-1149.0	-48259.0	-63928.2	-883.7	55.6370	0.7691	56.4061
Balance @ 08/31/2020	1,046.5	43,952	62,379.52	1,615.85	59.6091		
Inven From Offsite/Transfers	0.0	0.0	0.0	0.0			
Est'd Inventory Addition	0.0	0.0	0.0	0.0			
Fuel Balance @ Avg Price	1,046.5	43,952	62,379.52	1,615.85	59.6091		
Reverse Fuel Balance		XXXXXXXXXXXX	-62,379.52	XXXXXXXXXXXX			
Fuel Balance @ Avg Price		XXXXXXXXXXXX	65,494.31	XXXXXXXXXXXX			
Total @ 09/01/2020 Avg Price	1,046.5	43,952	65,494.31	1,615.85	62.5856		

Weighted Avg Cost/BBL by Location

59.6091 1.5441

Weighted Avg Cost/BBL @ Avg Cost

62.5856 1.5441

**HAWAII ELECTRIC LIGHT CO., INC.**  
Estimated Weighted Average  
August 2020

KEAHOLE ULSD

ULSD	BBL	GALLONS	COST EXCLUDE LT	LAND TRANSP	COST PER BARREL EXCLUD LT	LT	TOTAL
Balance at 07/31/2020	2,005.7	84,241	160,304.25	7,929.70			
Less: Est'd Inventory Addition	0.0						
Purchases: Estimate	(380.0)	(15,960)	(16,119.60)	(1,187.42)			
Actual	376.9	15,828	23,112.60	0.00			
Transfers out: Estimate		xxxxxxxxxxxx	xxxxxxxxxxxxxxx	xxxxxxxxxxxxxxx			
Actual		xxxxxxxxxxxx	xxxxxxxxxxxxxxx	xxxxxxxxxxxxxxx			
Transfers in: Estimate		(299)	0.00	(22.25)			
Actual		142	0.00	1,177.60			
Consumed: Estimate	400.3	16,811	34,165.56	1,487.14			
Actual	(298.2)	(12,524)	(29,821.40)	677.84	100.0079		
Balance Per G/L 07/31/2020	2,100.9	88,239	171,641.41	10,062.61	81.6979		
Purchases	0.0	0	0.00	0.00	0.0000		
Estimated Purchases	0.0	0	0.00	0.00			
Transfer in	0.1	5	0.00	0.37	0.00		
Consumed	(171.9)	(7,220)	(13,390.39)	(679.63)	77.8942	3.9535	81.8478
Balance @ 08/31/2020	1,929.1	81,024	158,251.01	9,383.35	82.0318		
Inventory From Offsite/Transfers	0.0	0	0.00	0.00			
Est'd Inventory Addition	0.0	0	0.00	0.00			
Fuel Balance @ Avg Price	1,929.1	81,024	158,251.01	9,383.35	82.0318		
Reverse Fuel Balance	xxxxxxxxxxxx	xxxxxxxxxxxx	(158,251.01)	xxxxxxxxxxxx			
Fuel Balance @ Avg Price	xxxxxxxxxxxx	xxxxxxxxxxxx	157,841.42	xxxxxxxxxxxx			
Total @ 09/01/2020 Avg Price	1,929.1	81,024	157,841.42	9,383.35	81.8195		
Weighted Avg Cost/BBL by Location			82.0318	4.8640			
Weighted Avg Cost/BBL @ Avg Cost			81.8195	4.8640			

**HAWAII ELECTRIC LIGHT CO., INC.**  
Estimated Weighted Average  
August 2020

WAIMEA DIESEL

ULSD	BBL	GALLONS	COST EXCLUDE LT	LAND TRANSP	COST PER BARREL	LT	TOTAL
Balance at 07/31/2020	704.6	29,595.0	46,178.6	1,926.54			
Less: Est'd Inven Addition	0.0	0.0	0.00	0.00			
Purchases: Estimate		(15,895)	(16,063.69)	(985.49)			
Actual		15,832.0	23,118.5	0.00			
Transfers out: Estimate		xxxxxxxxxxxx	xxxxxxxxxxxx	xxxxxxxxxxxx			
Actual		xxxxxxxxxxxx	xxxxxxxxxxxx	xxxxxxxxxxxx			
Transfers in: Estimate	1.0	43	0.00	0.00			
Actual	0.8	35	0.00	981.58			
Consumed: Estimate	503.4	21,141	42,965.56	1,453.70			
Actual	(381.4)	(16,020)	(28,640.69)	(1,101.57)			
Balance Per G/L 07/31/2020	826.9	34,731	67,558.31	2,274.76	81.6979		
ULSD Purchases	188.5	7,915	12,255.63	490.73	65.0330		
Estimated Purchases	-	0	0.00	0.00			
Transfer in	xxxxxxxxxxxx	(137)	0.00	0.00	#DIV/0!		
Consumed	(436.8)	(18,344)	(34,021.24)	(1,194.14)	77.8942	2.7341	80.6283
Balance @ 08/31/2020	575.4	24,165	45,792.70	1,571.36	79.5900		
Inven From Offsite/Transfers	0.0	0	0.00	0.00			
Est'd Inventory Addition	0.0	0	0.00	0.00			
Fuel Balance @ Avg Price	575.4	24,165	45,792.70	1,571.36	79.5900		
Reverse Fuel Balance	xxxxxxxxxxxx	xxxxxxxxxxxx	(45,792.70)	xxxxxxxxxxxx			
Fuel Balance @ Avg Price	xxxxxxxxxxxx	xxxxxxxxxxxx	47,075.41	xxxxxxxxxxxx			
Total @ 09/01/2020 Avg Price	575.4	24,165	47,075.41	1,571.36	81.8195		

Weighted Avg Cost/BBL by Location

79.5900 2.7311

Weighted Avg Cost/BBL @ Avg Cost

81.8195 2.7311

HAWAII ELECTRIC LIGHT CO., INC.  
Estimated Weighted Average  
August 2020

KANOELEHUA DIESEL

ULSD	BBL	GALLONS	COST EXCLUDE LT	LAND TRANSP		
Balance at 07/31/2020	1,222.1	51,327.0	100,430.6	2,056.7		
Less: Est'd Inventory Addition	0.0	0	0.00	0.00		
Purchases: Estimate	(380.0)	(15,960)	(16,119.60)	(408.58)		
Actual	376.1	15,798	23,068.85	0.00		
Transfers out: Estimate		x	x	x		
Actual		x	x	x		
Transfers in: Estimate		0	0.00	0.00		
Actual		72	0.00	404.43		
Consumed: Estimate	198.0	8,314	7,597.75	(66.31)		
Actual	(150.4)	(6,317)	(11,427.43)	(515.35)		
Balance Per G/L 07/31/2020	1,267.5	53,234	103,550.12	1,470.92		
ULSD Purchases	0	0	0.00	0.00	#DIV/0!	
Estimated Purchases	0	-	-	-		
Transfer in	0	0	0.00	0.00		
Consumed	(254.3)	(10,680)	(19,807.39)	(427.96)	77.89424871	1.6830
Balance @ 08/31/2020	1,013.2	42,554	83,742.73	1,042.96		
Inventory From Offsite/Transfers	0.0	0	0.00	0.00		
Est'd Inventory Addition	0.0	0	0.00	0.00		
Fuel Balance @ Avg Price	1,013.2	42,554	83,742.73	1,042.96		
Reverse Fuel Balance	x	x	(83,742.73)	x		
Fuel Balance @ Avg Price	x	x	82,898.69	x		
Total @ 09/01/2020 Avg Price	1,013.2	42,554	82,898.69	1,042.96		

Weighted Avg Cost/BBL by Location 82.6525 1.0294

Weighted Avg Cost/BBL @ Avg Cost 81.8195 1.0294

**HAWAII ELECTRIC LIGHT CO., INC.**  
Estimated Weighted Average  
August 2020

DISPERSED GENERATION

	BBL	GALLONS	COST	COST/BBL
Balance at 07/31/2020	143.1	6,009	10,546.42	
Less: Est'd Inven Addition	0.0	XXXXXXXXXX	XXXXXXXXXX	
Purchases: Estimate	(46.4)	(1,950)	(1,969.50)	
Actual	48.2	2,024	2,819.74	
Consumed: Estimate	12.8	536	1,089.33	
Actual	(14.0)	(587)	(752.62)	
	XXXXXXXXXX	XXXXXXXXXX	XXXXXXXXXX	
	XXXXXXXXXX	XXXXXXXXXX	XXXXXXXXXX	
	XXXXXXXXXX	XXXXXXXXXX	XXXXXXXXXX	
	XXXXXXXXXX	XXXXXXXXXX	XXXXXXXXXX	
Balance Per G/L 07/31/2020	143.62	6,032	11,733.37	81.6979
Purchases	0.0	0	0.00	0.0000
Transfer out	XXXXXXXXXX	XXXXXXXXXX	XXXXXXXXXX	
Transfer in	XXXXXXXXXX	XXXXXXXXXX	XXXXXXXXXX	
Consumed	(11.9)	(498)	(923.60)	77.8942
Balance @ 08/31/2020	131.8	5,534	10,809.77	82.0402
Est'd Inventory Addition	0.0	0	0.00	
Fuel Balance @ 08/31/2020	131.8	5,534	10,809.77	
Reverse Fuel Balance	XXXXXXXXXX	XXXXXXXXXX	(10,809.77)	xxxx
Fuel Balance @ Avg Price	XXXXXXXXXX	XXXXXXXXXX	10,780.69	xxxx
Total @ 09/01/2020 Avg Price	131.8	5,534	10,780.69	81.8195

**HAWAII ELECTRIC LIGHT COMPANY, INC.**  
**CONTRACT PRICES EFFECTIVE August 1, 2020**

TYPE OF OIL BURNED

<b>INDUSTRIAL *</b>	<u>Hill Industrial</u>		<u>Puna Industrial</u>	
	<u>¢/MBTU</u>	<u>\$/BBL</u>	<u>¢/MBTU</u>	<u>\$/BBL</u>
Tax <sup>1</sup>	52.10	3.2821	52.10	3.2821
Ocean Transportation	52.81	3.3270	52.81	3.3270
Storage	34.74	2.1885	34.74	2.1885
Wharfage	6.35	0.4000	6.35	0.4000
Fees <sup>2</sup>	1.43	0.0900	1.43	0.0900
	<u>Hilo Diesel</u>		<u>Waimea Diesel</u>	
<b>DIESEL *</b>	<u>¢/MBTU</u>	<u>\$/BBL</u>	<u>¢/MBTU</u>	<u>\$/BBL</u>
Tax <sup>1</sup>	69.34	4.0630	69.34	4.0630
Ocean Transportation	56.78	3.3270	56.78	3.3270
Storage	28.95	1.6963	28.95	1.6963
Wharfage	6.83	0.4000	6.83	0.4000
Fees <sup>2</sup>	1.54	0.0900	1.54	0.0900
	<u>Kona Diesel</u>		<u>CT3 Diesel</u>	
	<u>¢/MBTU</u>	<u>\$/BBL</u>	<u>¢/MBTU</u>	<u>\$/BBL</u>
Tax <sup>1</sup>	69.34	4.0630	69.34	4.0630
Ocean Transportation	56.78	3.3270	56.78	3.3270
Storage	28.95	1.6963	28.95	1.6963
Wharfage	6.83	0.4000	6.83	0.4000
Fees <sup>2</sup>	1.54	0.0900	1.54	0.0900
	<u>ULSD</u>			
<b>ULSD **</b>	<u>¢/MBTU</u>	<u>\$/BBL</u>		
Tax <sup>1</sup>	76.20	4.3664		
Ocean Transportation	0.00	0.0000		
Storage	0.00	0.0000		
Wharfage	0.00	0.0000		
Fees <sup>2</sup>	1.57	0.0900		

<sup>1</sup> Tax includes HGET, Hawaii Use Tax, Liquid Fuel Tax, LUST Tax and Environmental Response Tax.

Federal Oil Spill Recovery Fee reinstated as of January 2020.

HGET rate changed to 4.7120% in 2020.

<sup>2</sup> With the change in supplier to PAR some fees have been taken off the pricing sheet.

inventory, contract prices for the current month are being provided.

Contract prices are considered accurate pending actual delivery of fuel.

\* Land Transportation Costs are shown in Attachment 3, Sheet 1.

\*\* ULSD includes Waimea, Kanoelehua, and Keahole.

Reference: Decision and Order No. 16134, Docket No. 96-0040.

**Hawaii Electric Light Company, Inc.**  
PURCHASED POWER PRICES FOR September 1, 2020

		September 1, 2020 <u>(¢/kWh)</u>	Floor Rates <u>(¢/kWh)</u>
PGV (25 MW)	- on peak	11.576	6.560
PGV (22 MW)	- off peak	11.309	5.430
WAILUKU HYDRO	- on peak	11.576	7.240
	off peak	11.309	5.970
Other: (<100 KW)	Sch Q Rate	11.120	

		September 1, 2020 <u>(¢/kWh)</u>	Floor Rates <u>(¢/kWh)</u>
HEP		13.876	
PGV Addtl 5 MW	- on peak	13.250	0.0000
	- off peak	13.250	0.0000
PGV Addtl 8 MW	- on peak	10.100	0.0000
	- off peak	6.740	0.0000



**Hawaii Electric Light Company, Inc.**  
**Energy Cost Reconciliation Adjustment**  
September 1, 2020

<u>Line No.</u>	<u>Description</u>	<u>Amount</u>
1	Amount to be (returned) or collected	\$359,300
2	Monthly Amount ( $\frac{1}{3}$ x Line 1)	\$119,767
3	Revenue Tax Divisor	0.91115
4	Total (Line 2 / Line 3)	\$131,446
5	Estimated MWh Sales (September 1, 2020)	83,269 mwh
6	Adjustment (Line 4 / Line 5)	0.158 ¢/kwh

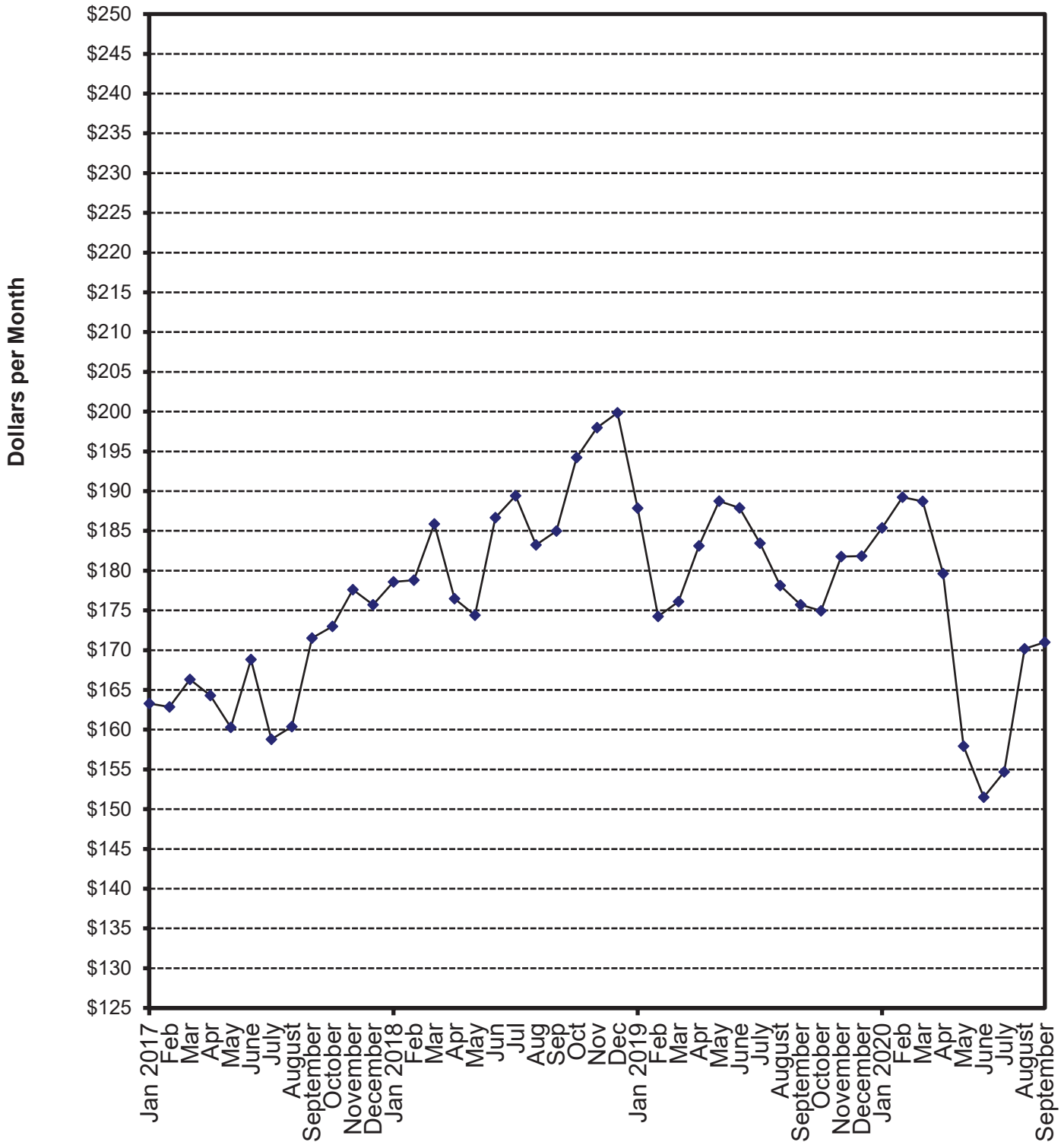
**HAWAII ELECTRIC LIGHT COMPANY, INC.**  
2020 Cumulative Reconciliation Balance

<u>Month</u>	(1) <u>YTD FOA Reconciliation</u>	<u>Qtr</u>	(2) <u>FOA Rec Adjust Variance</u>	(3) <u>FOA Rec Less Variance</u>	(4) <u>Try to Collect</u>	(5) <u>Actual Collect</u>	(6) <u>Month-end Cumulative Balance</u>
January 19					(305,667)	(300,243)	32,773
February	2,598,900	[4]	(8,054)	2,606,954	(866,300)	(800,636)	1,839,091
March					(866,300)	(825,091)	1,014,000
April					(866,300)	(829,484)	184,516
May	1,745,900	(1)	112,297	1,633,603	(581,967)	(565,304)	1,252,815
June					(581,967)	(585,631)	667,184
July					(581,967)	(586,240)	80,944
August	3,027,900	[2]	49,815	2,978,085	(1,009,300)	(1,025,775)	2,033,254
September					(1,009,300)	(1,026,151)	1,007,103
October					(1,009,300)	(1,007,209)	(106)
November	1,927,900	[3]	(37,599)	1,965,499	(642,633)	(651,308)	1,314,085
December 19					(642,633)	(646,001)	668,084
January 20					(642,633)	(673,144)	(5,060)
February	141,300	[4]	(9,952)	151,252	(47,100)	(45,511)	100,681
March					(47,100)	(46,650)	54,031
April					(47,100)	(40,115)	13,916
May	2,567,100	(1)	(28,472)	2,595,572	(855,700)	(882,167)	1,727,321
June					(855,700)	(879,772)	847,549
July					(855,700)	(862,349)	(14,800)
August	(359,300)	[2]	(43,554)	(315,746)	119,767		
September					119,767		

NOTES:

- Col(1): Quarterly FOA reconciliation amounts. (Refer to Attachment 6)  
A positive number is an over-collection. A negative number is an under-collection.
- Col(2): FOA reconciliation adjustment variance accumulated during the last three months, starting with the fourth prior month; the difference between the estimated recorded sales used to derive the \$/kwh adjustment and the actual recorded sales.  
(Col(5)-Col(4))
- Col(3): FOA reconciliation generated in the current quarter. The YTD FOA reconciliation difference minus the adjustment variance. Col(1)-Col(2)
- Col(4): Amount that the FOA reconciliation adjustment is trying to collect. (Col(1) \* 1/3)
- Col(5): Actual collected amount. (recorded sales \* \$/kwh adjustment/1.09751)
- Col(6): Cumulative balance of the FOA reconciliation (Previous balance + Col(3) + Col(5))

## Hawaii Electric Light Company, Inc. Residential Bill at 500 KWH/Month Consumption



**HAWAII ELECTRIC LIGHT COMPANY, INC.  
FUEL OIL ADJUSTMENT FACTOR DATA**

<u>EFFECTIVE DATE</u>	<u>FUEL FACTOR</u>		
	<u>CENTS / KWH</u>	<u>RESIDENTIAL &amp; COMMERCIAL @ 500 KWH</u>	<u>RESIDENTIAL BILL (\$) @ 600 KWH</u>
January 1, 2017	-2.842	163.27	195.58
February 1, 2017	-2.956	162.87	195.09
March 1, 2017	-2.274	166.31	199.24
April 1, 2017	-2.425	164.31	196.83
May 1, 2017	-3.035	160.30	192.02
June 1, 2017	-1.343	168.82	202.25
July 1, 2017	-3.220	158.79	190.22
August 1, 2017	-3.643	160.39	192.15
September 1, 2017	-2.447	171.52	205.50
October 1, 2017	-2.131	172.97	207.23
November 1, 2017	-0.885	177.60	212.80
December 1, 2017	-1.405	175.02	209.69
January 1, 2018	-0.723	178.59	213.95
February 1, 2018	-0.579	178.81	214.22
March 1, 2018	0.816	185.87	222.68
April 1, 2018	-0.912	176.46	211.39
May 1, 2018	-0.452	174.38	208.90
June 1, 2018	2.301	186.65	223.63
July 1, 2018	2.831	189.43	226.97
August 1, 2018	1.665	183.25	219.55
September 1, 2018	2.027	184.98	221.62
October 1, 2018	8.359	194.21	232.50
November 1, 2018	8.913	197.99	237.04
December 1, 2018	9.292	199.86	239.29
January 1, 2019	6.867	187.86	224.86
February 1, 2019	14.631	174.25	208.53
March 1, 2019	14.976	176.1	210.75
April 1, 2019	16.469	183.12	219.17
May 1, 2019	17.396	188.74	225.93
June 1, 2019	17.318	187.89	224.90
July 1, 2019	16.450	183.46	219.63
August 1, 2019	15.331	178.14	213.25
September 1, 2019	14.845	175.70	210.32
October 1, 2019	14.692	174.93	209.40
November 1, 2019	16.302	181.76	217.59
December 1, 2019	16.288	181.82	217.67
January 1, 2020	16.768	185.37	221.88
February 1, 2020	17.547	189.22	226.49
March 1, 2020	17.424	188.72	225.90
April 1, 2020	15.644	179.61	214.96
May 1, 2020	11.215	157.94	188.96
June 1, 2020	10.575	151.51	181.25
July 1, 2020	11.359	154.68	185.07
August 1, 2020	14.389	170.16	203.65
September 1, 2020	14.569	171.01	204.67

**HAWAII ELECTRIC LIGHT COMPANY, INC.  
RESIDENTIAL SURCHARGE DATA**

EFFECTIVE DATE	DESCRIPTION OF SURCHARGE	RATE
1/1/2018 - 1/31/18	PURCHASED POWER ADJUSTMENT CLAUSE	2.4105 CENTS/KWH
1/1/18-6/30/18	GREEN INFRASTRUCTURE FEE	1.3400 DOLLARS/MONTH
2/1/18-2/28/18	PURCHASED POWER ADJUSTMENT CLAUSE	2.3101 CENTS/KWH
3/1/18 - 3/31/18	PURCHASED POWER ADJUSTMENT CLAUSE	2.3258 CENTS/KWH
04/1/18-04/30/18	PURCHASED POWER ADJUSTMENT CLAUSE	2.3184 CENTS/KWH
04/1/18-04/30/18	SOLARSAVER ADJUSTMENT	-0.1464 CENTS/KWH
05/1/18-05/31/18	PURCHASED POWER ADJUSTMENT CLAUSE	2.3395 CENTS/KWH
05/1/18-05/31/18	SOLARSAVER ADJUSTMENT	0.0000 CENTS/KWH
5/1/2018	INTERIM RATE INCREASE 2016	2.5000 PERCENT ON BASE
06/01/18-06/30/18	PURCHASED POWER ADJUSTMENT CLAUSE	1.6729 CENTS/KWH
6/1/2018	RBA RATE ADJUSTMENT	1.0006 CENTS/KWH
07/01/18-07/31/18	PURCHASED POWER ADJUSTMENT CLAUSE	1.6811 CENTS/KWH
7/1/2018- 12/31/18	GREEN INFRASTRUCTURE FEE	1.2100 DOLLARS/MONTH
7/1/2018	RESIDENTIAL PBF SURCHARGE ADJUSTMENT	0.4658 CENTS/KWH
08/01/18-08/31/18	PURCHASED POWER ADJUSTMENT CLAUSE	1.6110 CENTS/KWH
09/01/18-09/30/18	PURCHASED POWER ADJUSTMENT CLAUSE	1.5950 CENTS/KWH
10/01/18-10/31/18	PURCHASED POWER ADJUSTMENT CLAUSE	1.8602 CENTS/KWH
10/1/2018	INTERIM RATE INCREASE 2016	0.0000 PERCENT ON BASE
10/1/2018	FINAL RATE INCREASE (TY 2016) 0.53% EFFECTIVE 10/01/18, DOCKET NO. 2015-0170	
11/1/2018-11/30/18	PURCHASED POWER ADJUSTMENT CLAUSE	2.0617 CENTS/KWH
12/1/2018-12/31/18	PURCHASED POWER ADJUSTMENT CLAUSE	2.0577 CENTS/KWH
1/1/2019-1/31/19	PURCHASED POWER ADJUSTMENT CLAUSE	2.0548 CENTS/KWH
1/1/2019- 06/30/19	GREEN INFRASTRUCTURE FEE	1.3500 DOLLARS/MONTH
2/1/2019-2/28/19	PURCHASED POWER ADJUSTMENT CLAUSE	1.8113 CENTS/KWH
3/1/2019-3/31/19	PURCHASED POWER ADJUSTMENT CLAUSE	1.8372 CENTS/KWH
04/1/2019-4/30/19	PURCHASED POWER ADJUSTMENT CLAUSE	1.8247 CENTS/KWH
04/1/19-04/30/19	SOLARSAVER ADJUSTMENT	-0.0768 CENTS/KWH
05/01/2019-5/31/19	PURCHASED POWER ADJUSTMENT CLAUSE	1.9460 CENTS/KWH
05/01/2019- 03/31/2020	SOLARSAVER ADJUSTMENT	0.0000 CENTS/KWH
06/01/2019-6/30/19	PURCHASED POWER ADJUSTMENT CLAUSE	1.9474 CENTS/KWH
6/1/2019-12/31/2019	RBA RATE ADJUSTMENT	0.9069 CENTS/KWH
7/01/2019-7/31/19	PURCHASED POWER ADJUSTMENT CLAUSE	1.9539 CENTS/KWH
7/1/2019-12/31/2019	GREEN INFRASTRUCTURE FEE	1.1700 DOLLARS/MONTH
7/1/2019-12/31/2019	RESIDENTIAL PBF SURCHARGE ADJUSTMENT	0.4775 CENTS/KWH
8/1/2019-8/31/2019	PURCHASED POWER ADJUSTMENT CLAUSE	2.0075 CENTS/KWH
9/1/2019-9/30/2019	PURCHASED POWER ADJUSTMENT CLAUSE	2.0060 CENTS/KWH
10/1/2019-10/31/2019	PURCHASED POWER ADJUSTMENT CLAUSE	2.0069 CENTS/KWH
11/1/2019-11/30/2019	PURCHASED POWER ADJUSTMENT CLAUSE	1.7616 CENTS/KWH
12/1/2019-12/31/2019	PURCHASED POWER ADJUSTMENT CLAUSE	1.7884 CENTS/KWH
1/1/2020-1/31/2020	PURCHASED POWER ADJUSTMENT CLAUSE	1.7730 CENTS/KWH
1/1/2020-6/30/2020	GREEN INFRASTRUCTURE FEE	1.2500 DOLLARS/MONTH
1/1/2020- 05/31/2020	RBA RATE ADJUSTMENT	0.1852 CENTS/KWH
<b>1/1/2020</b>	<b>INTERIM RATE ADJUSTMENT 2019</b>	<b>4.0900 PERCENT ON BASE</b>
1/1/2020-6/30/2020	RESIDENTIAL PBF SURCHARGE ADJUSTMENT	0.7437 CENTS/KWH
2/1/2020- 2/29/2020	PURCHASED POWER ADJUSTMENT CLAUSE	1.7631 CENTS/KWH
3/1/2020- 3/31/2020	PURCHASED POWER ADJUSTMENT CLAUSE	1.7883 CENTS/KWH
4/1/2020- 4/30/2020	PURCHASED POWER ADJUSTMENT CLAUSE	1.7717 CENTS/KWH
4/1/2020- 4/30/2020	SOLARSAVER ADJUSTMENT	-0.0267 CENTS/KWH
05/01/2020-5/31/2020	PURCHASED POWER ADJUSTMENT CLAUSE	1.8396 CENTS/KWH
<b>5/1/2020</b>	<b>SOLARSAVER ADJUSTMENT</b>	<b>0.0000 CENTS/KWH</b>
06/01/2020-6/30/2020	PURCHASED POWER ADJUSTMENT CLAUSE	1.8413 CENTS/KWH
<b>6/1/2020</b>	<b>RBA RATE ADJUSTMENT</b>	<b>-0.4623 CENTS/KWH</b>
07/01/2020-7/31/2020	PURCHASED POWER ADJUSTMENT CLAUSE	1.8592 CENTS/KWH
<b>7/1/2020</b>	<b>RESIDENTIAL PBF SURCHARGE ADJUSTMENT</b>	<b>0.5882 CENTS/KWH</b>
<b>7/1/2020</b>	<b>GREEN INFRASTRUCTURE FEE</b>	<b>1.1900 DOLLARS/MONTH</b>
8/1/2020-8/31/2020	PURCHASED POWER ADJUSTMENT CLAUSE	1.9261 CENTS/KWH
<b>9/1/2020-9/30/2020</b>	<b>PURCHASED POWER ADJUSTMENT CLAUSE</b>	<b>1.9161 CENTS/KWH</b>

\*\*Base charges include customer charge, demand charge, energy charge, power factor adjustment, voltage discount, and minimum charge.

Calculations of the Average Residential Customer Bill

	Rate		Charge (\$) at 500 Kwh			
	8/01/20	9/01/20	8/01/20	9/01/20	Difference	
<b>Base Rates</b>	effective date:	2/1/2019	2/1/2019			
Base Fuel Energy Charge	¢/kwh	-	-	\$0.00	\$0.00	\$0.00
Non-Fuel Energy Charge	¢/kwh			\$71.85	\$71.85	\$0.00
First 300 kWh per month	¢/kwh	13.0289	13.0289	\$39.09	\$39.09	\$0.00
Next 700 kWh per month	¢/kwh	16.3807	16.3807	\$32.76	\$32.76	\$0.00
Customer Charge	\$	11.50	11.50	\$11.50	\$11.50	\$0.00
<b>Total Base Charges</b>				\$83.35	\$83.35	\$0.00
<b>Interim Rate Adjustment 2019 TY</b>	% on base	4.0900%	4.0900%	\$3.41	\$3.41	\$0.00
<b>RBA Rate Adjustment</b>	¢/kwh	(0.4623)	(0.4623)	-\$2.31	-\$2.31	\$0.00
<b>Purchased Power Adj. Clause</b>	¢/kwh	1.9261	1.9161	\$9.63	\$9.58	-\$0.05
<b>PBF Surcharge</b>	¢/kwh	0.5882	0.5882	\$2.94	\$2.94	\$0.00
<b>DSM Adjustment</b>	¢/kwh	0.0000	0.0000	\$0.00	\$0.00	\$0.00
<b>SolarSaver Adjustment</b>	¢/kwh	0.0000	0.0000	\$0.00	\$0.00	\$0.00
<b>Energy Cost Recovery</b>	¢/kwh	14.3890	14.5690	\$71.95	\$72.85	\$0.90
<b>Green Infrastructure Fee</b>	\$	1.1900	1.1900	\$1.19	\$1.19	\$0.00
<b>Avg Residential Bill at 500 kwh</b>				\$170.16	\$171.01	

Increase (Decrease -)	\$0.85
% Change	0.50%

	Rate		Charge (\$) at 600 Kwh			
	8/01/20	9/01/20	8/01/20	9/01/20	Difference	
<b>Base Rates</b>	effective date:	2/1/2019	2/1/2019			
Base Fuel/Energy Charge	¢/kwh	-	-	\$0.00	\$0.00	\$0.00
Non-Fuel Energy Charge	¢/kwh			\$88.23	\$88.23	\$0.00
First 300 kWh per month	¢/kwh	13.0289	13.0289	\$39.09	\$39.09	\$0.00
Next 700 kWh per month	¢/kwh	16.3807	16.3807	\$49.14	\$49.14	\$0.00
Customer Charge	\$	11.50	11.50	\$11.50	\$11.50	\$0.00
<b>Total Base Charges</b>				\$99.73	\$99.73	\$0.00
<b>Interim Rate Adjustment 2019 TY</b>	% on base	4.0900%	4.0900%	\$4.08	\$4.08	\$0.00
<b>RBA Rate Adjustment</b>	¢/kwh	(0.4623)	(0.4623)	-\$2.77	-\$2.77	\$0.00
<b>Purchased Power Adj. Clause</b>	¢/kwh	1.9261	1.9161	\$11.56	\$11.50	-\$0.06
<b>PBF Surcharge</b>	¢/kwh	0.5882	0.5882	\$3.53	\$3.53	\$0.00
<b>DSM Adjustment</b>	¢/kwh	0.0000	0.0000	\$0.00	\$0.00	\$0.00
<b>SolarSaver Adjustment</b>	¢/kwh	0.0000	0.0000	\$0.00	\$0.00	\$0.00
<b>Energy Cost Recovery</b>	¢/kwh	14.3890	14.5690	\$86.33	\$87.41	\$1.08
<b>Green Infrastructure Fee</b>	\$	1.1900	1.1900	\$1.19	\$1.19	\$0.00
<b>Avg Residential Bill at 600 kwh</b>				\$203.65	\$204.67	

Increase (Decrease -)	\$1.02
% Change	0.50%

---

**From:** puc@hawaii.gov  
**Sent:** Thursday, August 27, 2020 2:15 PM  
**To:** Watanabe, Blaine  
**Subject:** Hawaii PUC eFiling Confirmation of Filing

**[This email is coming from an EXTERNAL source. Please use caution when opening attachments or links in suspicious email.]**

Your eFile document has been filed with the Hawaii Public Utilities commission on 2020 Aug 27 PM 14:12. The mere fact of filing shall not waive any failure to comply with Hawaii Administrative Rules Chapter 6-61, Rules of Practice and Procedure Before the Public Utilities Commission, or any other application requirements. Your confirmation number is BLAI20141224139. If you have received this email in error please notify the Hawaii Public Utilities Commission by phone at 808 586-2020 or email at hawaii.puc@hawaii.gov.