



March 27, 2015

FILED

2015 MAR 27 P 4:05

The Honorable Chair and Members
of the Hawai'i Public Utilities Commission
Kekuanaoa Building, 1st Floor
465 South King Street
Honolulu, Hawai'i 96813

PUBLIC UTILITIES
COMMISSION

Dear Commissioners:

Subject: Docket No. 2011-0206
Reliability Standards Working Group
Monthly Report

Pursuant to Ordering Paragraph 3 of the Commission's Order No. 30371, filed on May 4, 2012, in the above subject proceeding, enclosed as Exhibit A is the Hawaiian Electric Companies'¹ monthly report for February 2015 on (1) system frequency control performance during month; (2) significant system events during month; and (3) curtailment of non-dispatchable renewable resources.

In addition, an electronic copy of each report is also included with this filing. These files are voluminous, and therefore, the Company is providing a compact disc ("CD") containing the electronic files to both the Commission and the Consumer Advocate. Copies of the CD will be available to any Party to this proceeding. Interested Parties should email Marisa Chun at marisa.chun@heco.com to request a copy.

If you have any questions on this matter, please contact Marisa Chun at (808) 543-4723.

Sincerely,

Daniel G. Brown
Manager
Regulatory Non-Rate Proceedings

Enclosure

cc: Service List

¹ Hawaiian Electric Company, Inc., Hawai'i Electric Light Company, Inc., and Maui Electric Company, Limited are collectively referred to as the "Hawaiian Electric Companies" or "Companies".

SERVICE LIST
(Docket No. 2011-0206)

JEFFREY T. ONO EXECUTIVE DIRECTOR DEPARTMENT OF COMMERCE AND CONSUMER AFFAIRS DIVISION OF CONSUMER ADVOCACY P.O. Box 541 Honolulu, HI 96809	2 Copies Via Hand Delivery
GREGG J. KINKLEY, ESQ. DEPARTMENT OF THE ATTORNEY GENERAL 425 Queen Street Honolulu, Hawaii 96813 Counsel for DBEDT	1 Copy Electronically Transmitted
DANIEL W.S. LAWRENCE, ESQ. DEPARTMENT OF THE CORPORATION COUNSEL CITY AND COUNTY OF HONOLULU 530 S. King Street, Room 110 Honolulu, HI 96813 Counsel for the CITY AND COUNTY OF HONOLULU	1 Copy Electronically Transmitted
MOLLY A. STEBBINS, ESQ. WILLIAM V. BRILHANTE, JR., ESQ. DEPARTMENT OF THE CORPORATION COUNSEL COUNTY OF HAWAII 101 Aupuni Street, Suite 325 Hilo, HI 96720 Counsel for the COUNTY OF HAWAII	1 Copy Electronically Transmitted
HENRY Q CURTIS VICE PRESIDENT FOR CONSUMER ISSUES LIFE OF THE LAND P.O. Box 37158 Honolulu, HI 96837-0158	1 Copy Electronically Transmitted
WARREN S. BOLLMEIER II PRESIDENT HAWAII RENEWABLE ENERGY ALLIANCE 46-040 Konane Place, #3816 Kaneohe, HI 96744	1 Copy Electronically Transmitted

SERVICE LIST
(Docket No. 2011-0206)

DOUGLAS A. CODIGA, ESQ.
SCHLACK ITO LLLC
Topa Financial Center
745 Fort Street, Suite 1500
Honolulu, HI 96813
Counsel for BLUE PLANET FOUNDATION

1 Copy
Electronically Transmitted

ISAAC MORIWAKE, ESQ.
DAVID HENKIN, ESQ.
EARTHJUSTICE
850 Richards Street, Suite 400
Honolulu, HI 96813-4501
Counsel for HAWAII SOLAR ENERGY ASSOCIATION

1 Copy
Electronically Transmitted

KENT D. MORIHARA, ESQ.
KRIS N. NAKAGAWA, ESQ.
LAUREN M. IMADA-LEE, ESQ.
TANYA M. FERNANDES, ESQ.
Moriwara Lau & Fong LLP
841 Bishop Street, Suite 400
Honolulu, Hawaii 96813
Counsel for KAUAI ISLAND UTILITY COOPERATIVE

1 Copy
Electronically Transmitted

ERIK W. KVAM
CHIEF EXECUTIVE OFFICER
ZERO EMISSIONS LEASING LLC
1110 University Avenue, Suite 402
Honolulu, HI 96826

1 Copy
Electronically Transmitted

SANDRA-ANN Y.H. WONG, ESQ.
ATTORNEY AT LAW, A LAW CORPORATION
1050 Bishop Street, #514
Honolulu, HI 96813
Counsel for TAWHIRI POWER LLC

1 Copy
Electronically Transmitted

RILEY SAITO
73-1294 Awakea Street
Kailua-Kona, HI 96740
For SOLAR ENERGY INDUSTRIES ASSOCIATION

1 Copy
Electronically Transmitted

SERVICE LIST
(Docket No. 2011-0206)

DEAN T. YAMAMOTO, ESQ.
YAMAMOTO & SETTLE
700 Bishop Street, Suite 200
Honolulu, HI 96813
Counsel for CASTLE & COOKE HOMES HAWAII, INC.,
CASTLE & COOKE RESORTS, LLC and
LANAI SUSTAINABILITY RESEARCH, LLC

1 Copy
Electronically Transmitted

MICHAEL J. HOPPER, ESQ.
DEPUTY CORPORATION COUNSEL
DEPARTMENT OF THE CORPORATION COUNSEL
COUNTY OF MAUI
200 S. High Street
Wailuku, HI 96793
Counsel for the COUNTY OF MAUI

1 Copy
Electronically Transmitted

CURTIS SEYMOUR
SENIOR MANAGER, GOVERNMENT AFFAIRS
SUN EDISON LLC
600 Clipper Drive
Belmont, CA 94002

1 Copy
Electronically Transmitted

MONA W. CLARK, ESQ.
OFFICE OF THE COUNTY ATTORNEY
COUNTY OF KAUAI
4444 Rice Street, Suite 200
Lihue, HI 96766-1300

1 Copy
Electronically Transmitted

BRADLEY ALBERT
PRESIDENT
HAWAII PV COALITION
P.O. Box 81501
Haiku, HI 96708

1 Copy
Electronically Transmitted

HILTON H. UNEMORI
ECM, INC.
130 N. Market Street
Wailuku, HI 96793-1716
For SOUTH MAUI RENEWABLE RESOURCES, LLC

1 Copy
Electronically Transmitted

SKY STANFIELD
KEYES, FOX & WIEDMAN LLP
436 14th Street, Suite 1305
Oakland, CA 94612
For the INTERSTATE RENEWABLE ENERGY COUNCIL

1 Copy
Electronically Transmitted

SERVICE LIST
(Docket No. 2011-0206)

PETE COOPER
SOLARCITY CORPORATION
REGIONAL DIRECTOR, HAWAII
599 Kahelu Street
Mililani, HI 96789

1 Copy
Electronically Transmitted

STANLEY ALLEN GRAY, SENIOR DEVELOPER
Pier 1, Bay 3
San Francisco, CA 94111
For MOLOKAI RENEWABLES LLC

1 Copy
Electronically Transmitted

ALISON SILVERSTEIN
19213 Luedtke Lane
Pflugerville, TX 78660

1 Copy
Electronically Transmitted

BRENDAN KIRBY
12011 SW Pineapple Court
Palm City, FL 34990

1 Copy
Electronically Transmitted

The Commission's Order No. 30371 (Docket No 2011-0206 – Relating To Various Matters in RSWG Process), filed May 4, 2012, ordered the following information for each island grid:

- (1) System frequency control performance during month:
 - a) Frequency duration plot based on the highest resolution SCADA data available for the month detailing how many seconds each power system operated at frequencies above 60 hertz and at frequencies below 60 Hz.
 - b) Tabulation of the number, magnitude and duration of frequency excursions (high and low) outside normal frequency control range (59.95 to 60.05 Hz).

The following provides information with respect to items 1a) through 1b) – (all statements are current as of the month ending February 28, 2015):

1a) Frequency duration plot based on the highest resolution SCADA data available for the month detailing how many seconds each power system operated at frequencies above 60 hertz and at frequencies below 60 Hz:

The frequency duration plots for Hawaiian Electric, Maui Electric (Maui Division) and Hawai'i Electric Light based on two-second data are provided in Attachment 1, and the enclosed Excel files. Refer to the electronic files for the individual data points because the information is voluminous and does not translate well to a hard copy.

1b) Tabulation of the number, magnitude and duration of frequency excursions (high and low) outside normal frequency control range (59.95 to 60.05 Hz):

Tabulation of the number, magnitude and duration of frequency excursions outside of the frequency range of 59.95 Hz to 60.05 Hz for Hawaiian Electric, Maui Electric (Maui Division) and Hawai'i Electric Light are provided in Attachment 2, and the enclosed Excel files. Refer to the electronic files for the individual data points because the information is voluminous and does not translate well to a hard copy.

- (2) Significant system events during month:
 - a) Tabulation of contingency reserve activations including date and time, MW magnitude, duration, and triggering event.
 - b) Tabulation of under frequency load shed activations including date and time, triggering frequency, MW magnitude, duration, and triggering event.
 - c) Tabulation of demand response activations for system events, including date and time, MW magnitude, duration, and triggering event, (excluding demand response utilization for unit commitment deferral or system operations economics.)

The following provides information with respect to items 2a) through 2c) – (all statements are current as of the month ending February 28, 2015):

2a) Tabulation of contingency reserve activations including date and time, MW magnitude, duration, and triggering event:

Hawaiian Electric contingency reserve activations are provided in Attachment 3. Maui Electric and Hawai'i Electric Light do not operate with contingency reserve requirements.

2b) Tabulation of under frequency load shed activations including date and time, triggering frequency, MW magnitude, duration, and triggering event:

Hawaiian Electric and Hawai'i Electric Light's under frequency load shed events are provided in Attachment 4. Maui Electric did not have any under frequency load shed events for the month of February.

2c) Tabulation of demand response activations for system events, including date and time, MW magnitude, duration, and triggering event, (excluding demand response utilization for unit commitment deferral or system operations economics.)

Hawaiian Electric's demand response activations for system events are provided in Attachment 5. Hawai'i Electric Light currently does not have demand response program. Maui Electric has implemented the Fast Demand Response pilot program on a limited basis. Hawai'i Electric Light plans to use the findings of Maui Electric's pilot program to help in the evaluation and development of future demand response programs. Maui Electric executes a weekly testing protocol which measures customer participation. This program is not currently used in response to actual system events.

- (3) Curtailment of non-dispatchable renewable resources:
- (a) Tabulation of each curtailment event for each resource including the starting date and time, duration, megawatt hours curtailed, peak MW curtailed, and reason for curtailment.
 - (b) Total MWh of non-dispatchable renewable resources curtailed for the month.

The following provides information with respect to items 3a) through 3b) – (all statements are current as of the month ending February 28, 2015):

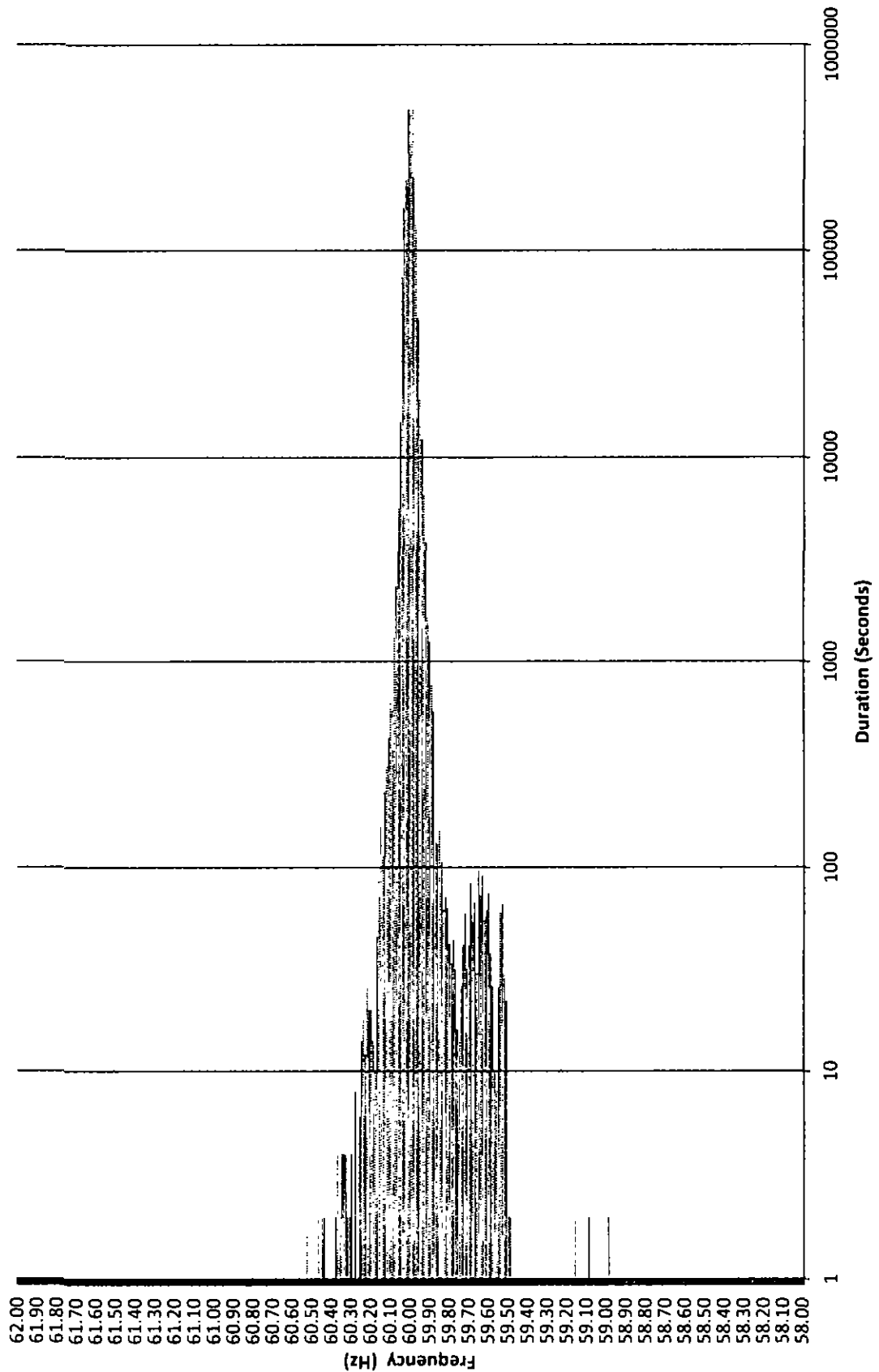
3a) Tabulation of each curtailment event for each resource including the starting date and time, duration, megawatt hours curtailed, peak MW curtailed, and reason for curtailment:

The tabulation of each curtailment event for each resource is provided in Attachment 6.

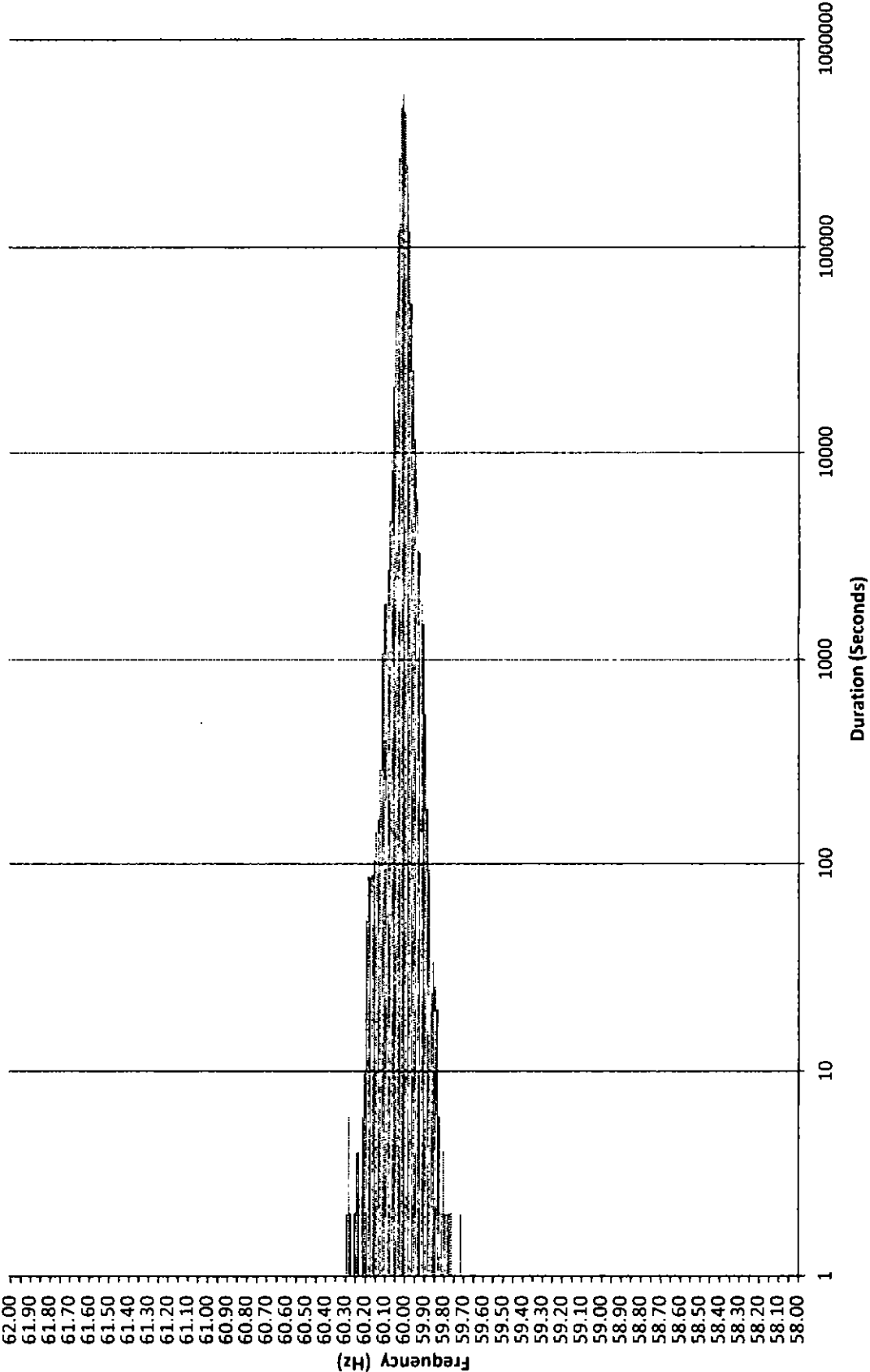
3b) Total MWh of non-dispatchable renewable resources curtailed for the month:

Curtailed MWh from non-dispatchable resources are difficult to determine due to the variability of the resource during curtailment periods. In some cases, the curtailed MWh estimates were provided by the IPPs under curtailment. Hawai'i Electric Light is not providing an estimate of curtailed MWh, as this information is not provided to Hawai'i Electric Light from the IPP. The Hawaiian Electric Companies do not make any representations as to the accuracy of the curtailed MWh. The estimated MWh of non-dispatchable resources curtailed for the month are provided in Attachment 6, corresponding to each curtailment event.

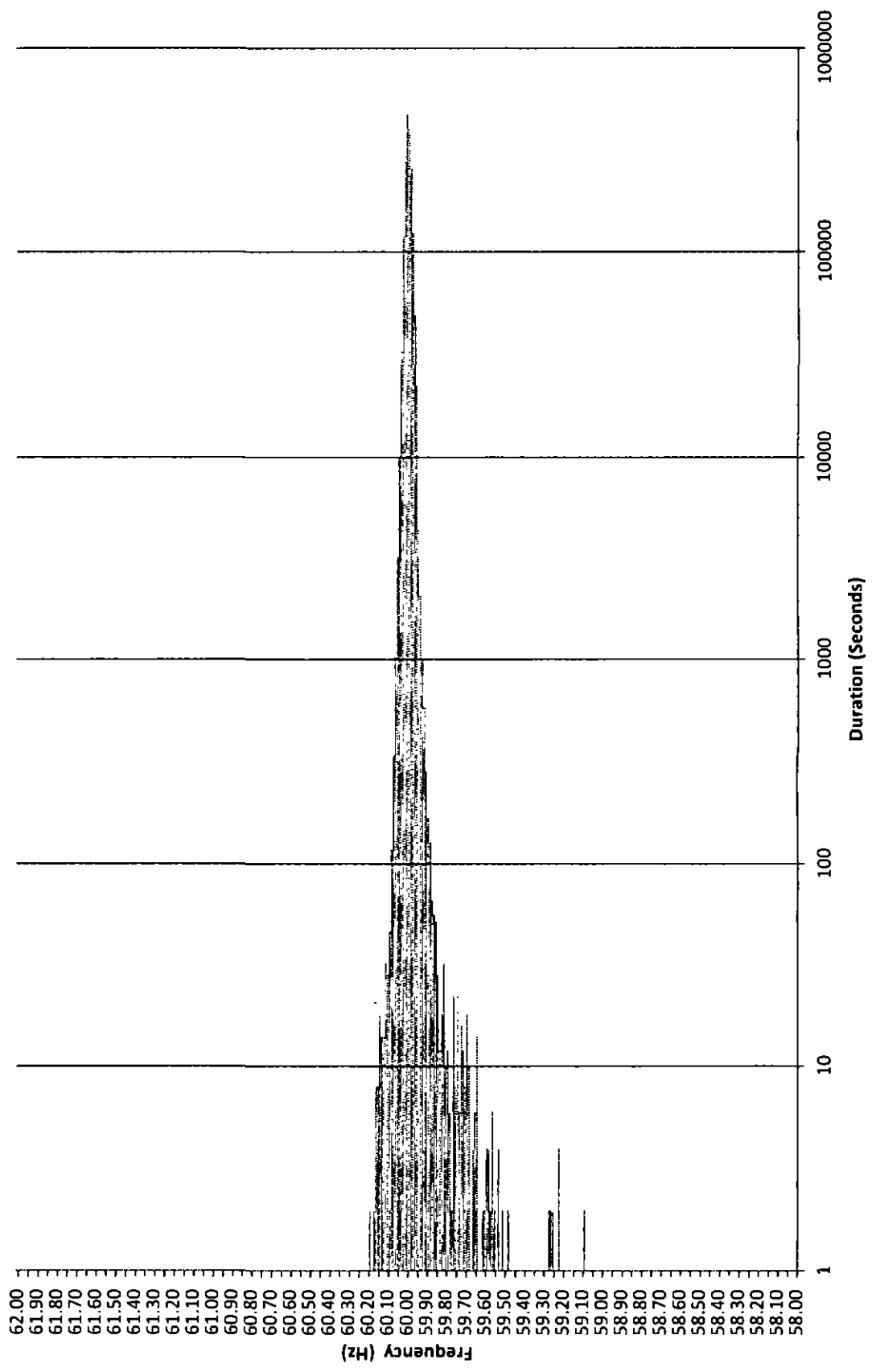
Frequency Distribution Plot - Hawaiian Electric February 2015



**Maui Electric Frequency Distribution Plot - Maui
February 2015**



Frequency Distribution Plot - Hawai'i Electric Light February 2015



Hawaiian Electric Frequency Excursion Statistics February 2015		
Data Rounded to the nearest	<59.95 Hz	>60.05 Hz
Number of Excursions	1490	1000
Maximum Duration (sec)	1314	642
Maximum Deviation (Hz)	54.037	60.525
Total Duration of Excursions (sec)	35884	16570

Maui Electric Frequency Excursion Statistics February 2015		
	<59.95 Hz	>60.05 Hz
Number of Excursions	4630	3412
Maximum Duration (sec)	259200	1114
Maximum Deviation (Hz)	59.7087	60.2943
Total Duration of Excursions (sec)	294714	31132

Hawai'i Electric Light Frequency Excursion Statistics February 2015		
	<59.95 Hz	>60.05 Hz
Number of Excursions	4184	588
Maximum Duration (sec)	290	48
Maximum Deviation (Hz)	59.090	60.189
Total Duration of Excursions (sec)	26752	3500

HAWAIIAN ELECTRIC COMPANY, INC.
CONTINGENCY RESERVE ACTIVATION EVENTS
FEBRUARY 2015

Event #	Date & Time	Frequency (Hz)			Spinning Reserve Shortfall (MW)	Duration (HH:MM)	Description
		Prior to Event	Nadir	Trigger			
1	02/12/15 07:08	60.002	59.774	N/A	33.00	0.13	Kalaeloa Steam unit tripped offline while generating ~36 MW. W9 & W10 brought online for spinning reserve
2	02/14/15 01:46	59.990	58.879	N/A	22.00	0.16	AES tripped offline while generating ~172 MW. W9 brought online for spinning reserve.
3	02/14/15 09:15	59.947	59.504	N/A	66.00	0.21	K1 & K3 tripped offline while generating ~51 MW and ~53 MW, respectively. W9 & W10 brought online for spinning reserve
4	02/24/15 10:53	59.974	59.643	N/A	14.00	0.01	K5 decreased output from ~72 to ~6 MW. W10 brought online for spinning reserve.

HAWAIIAN ELECTRIC COMPANY, INC.
DEMAND RESPONSE EVENTS
FEBRUARY 2015

Event #	Date & Time	Frequency (Hz)			Load Shed (MW)	Duration (HH:MM)	Description
		Prior to Event	Nadir	Trigger			
1	02/14/15 01:47	59.990	58.879	59.70	N/A	0:12	AES tripped offline while generating ~172 MW. RDLC and CIDLC activated.
2	02/14/15 09:22	59.707	59.504	59.70	N/A	0:14	K1 and K3 tripped offline while generating ~51 MW and ~53 MW, respectively. HPOWER decreased output from ~40 MW to ~20 MW. RDLC activated.
3	02/14/15 17:45	60.037	59.926	59.70	7.50	2:00	In generation shortfall condition, RDLC, CIDLC and Fast DR activated for spinning reserve.
4	02/24/15 10:54	59.974	59.643	59.70	N/A	0:01	K5 decreased output from ~72 to ~6 MW. RDLC activated.

Hawaiian Electric Curtailment Report February 2015

Start Date/Time	Curtailment Set Point	MW output prior to start of curtailment	End Date/Time	MW output after curtailment released	Estimated MWh of curtailed energy during event (1)	IPP	Reason for Curtailment
07/17/14 14:29	48.0	41.10	02/09/15 16:26	39.3	*	Mauka	Flicker
02/12/15 07:59	0.0	0.20	02/12/15 08:16	0	*	KWF	Replacement work
02/12/15 08:00	0.0	0.10	02/12/15 08:17	0	*	Makai	Replacement work
02/12/15 14:42	0.0	1.70	02/12/15 15:16	0	*	KWF	Replacement work
02/12/15 14:43	0.0	0.20	02/12/15 15:17	0	*	Makai	Replacement work
02/20/15 14:28	0.0	0.00	02/21/15 23:11	0	*	KWF	Maintenance work
02/21/15 19:33	0.0	14.20	02/21/15 23:14	0	*	Mauka	Maintenance work
02/21/15 19:43	0.0	6.30	02/21/15 23:13	0	*	Makai	Maintenance work
02/23/15 07:29	0.0	0.20	02/23/15 08:34	0	*	KLS2	Maintenance work
02/23/15 13:49	0.0	2.60	02/23/15 14:31	0	*	KLS2	Maintenance work
02/25/15 07:22	0.0	12.60	02/25/15 16:03	0	*	KWF	Maintenance work
02/25/15 07:36	0.0	21.30	02/25/15 09:12	0	*	Mauka	Maintenance work
02/25/15 07:51	0.0	2.20	02/25/15 16:15	0	*	Makai	Maintenance work
02/25/15 15:10	0.0	35.40	02/25/15 16:06	0	*	Mauka	Maintenance work
02/26/15 07:10	0.0	0.00	02/26/15 16:16	0	*	KWF	Replacement work
02/26/15 07:11	0.0	0.00	02/26/15 16:17	0	*	Makai	Replacement work
02/26/15 07:12	0.0	0.00	02/26/15 08:08	0	*	Mauka	Replacement work
02/26/15 15:50	0.0	4.60	02/26/15 16:17	0	*	Mauka	Replacement work

KLS2 = Kalaeloa Solar 2 PV Farm

KREP = Kalaeloa Renewable Energy Park

KWF = Kahuku Wind Farm

Makai = Kawaiioa Makai Wind Farm

Mauka = Kawaiioa Mauka Wind Farm

(1) The estimated MWh of energy curtailed during the event is supplied by Kahuku Wind Farm and/or Kawaiioa Wind Farm, and HECO does not make any representations as to its accuracy.

* Data has not been provided by IPP

RBWG Maul Curtailment Report February 2015



Start Date and Time	Duration	IPP Curtailed	Estimated Curtailed MWh	Peak MW Curtailed	Reasons for Curtailment
2/1/2015 1:21	0:01	KWPH	0.000	0.019	AGC MAVG - calculated
2/1/2015 1:26	0:02	KWPH	0.001	2.804	AGC MAVG - calculated
2/1/2015 1:31	0:38	KWPH	0.312	3.548	AGC MAVG - calculated
2/1/2015 1:37	0:05	KWPH	0.002	0.039	AGC MAVG - calculated
2/1/2015 1:44	0:05	KWPH	0.014	4.060	AGC MAVG - calculated
2/1/2015 1:50	0:38	KWPH	0.818	9.422	AGC MAVG - calculated
2/1/2015 1:52	0:07	KWPH	0.022	0.008	AGC MAVG - calculated
2/1/2015 5:01	0:10	KWPH	0.020	0.249	AGC MAVG - calculated
2/1/2015 5:17	2:16	KWPH	2.806	16.043	AGC MAVG - calculated
2/1/2015 8:05	0:02	KWPH	0.045	11.923	AGC MAVG - calculated
2/1/2015 8:11	0:02	KWPH	0.033	9.267	AGC MAVG - calculated
2/1/2015 8:34	0:01	KWPH	0.018	12.892	AGC MAVG - calculated
2/1/2015 9:57	0:01	KWPH	0.007	11.620	AGC MAVG - calculated
2/1/2015 9:05	0:01	KWPH	0.001	11.654	AGC MAVG - calculated
2/1/2015 9:13	0:07	KWPH	0.125	11.515	AGC MAVG - calculated
2/1/2015 9:22	0:02	KWPH	0.016	7.101	AGC MAVG - calculated
2/1/2015 10:43	0:02	KWPH	0.021	11.871	AGC MAVG - calculated and Good Engineering and Operating Practices
2/1/2015 10:55	0:04	KWPH	0.054	9.999	AGC MAVG - calculated and Good Engineering and Operating Practices
2/1/2015 11:00	0:02	KWPH	0.028	8.108	AGC MAVG - calculated and Good Engineering and Operating Practices
2/1/2015 11:12	0:01	KWPH	0.023	6.650	AGC MAVG - calculated and Good Engineering and Operating Practices
2/1/2015 11:30	0:12	KWPH	0.212	13.686	AGC MAVG - calculated and Good Engineering and Operating Practices
2/1/2015 11:44	0:02	KWPH	0.037	10.832	AGC MAVG - calculated and Good Engineering and Operating Practices
2/1/2015 11:47	0:01	KWPH	0.017	9.965	AGC MAVG - calculated and Good Engineering and Operating Practices
2/1/2015 11:51	0:01	KWPH	0.013	10.571	AGC MAVG - calculated and Good Engineering and Operating Practices
2/1/2015 11:53	0:06	KWPH	0.119	10.113	AGC MAVG - calculated and Good Engineering and Operating Practices
2/1/2015 12:02	0:02	KWPH	0.018	6.048	AGC MAVG - calculated and Good Engineering and Operating Practices
2/1/2015 12:06	0:02	KWPH	0.020	5.834	AGC MAVG - calculated and Good Engineering and Operating Practices
2/1/2015 13:43	0:03	KWPH	0.029	3.899	AGC MAVG - calculated and Good Engineering and Operating Practices
2/1/2015 13:47	0:18	KWPH	0.249	8.679	AGC MAVG - calculated and Good Engineering and Operating Practices
2/1/2015 14:11	0:04	KWPH	0.034	6.869	AGC MAVG - calculated and Good Engineering and Operating Practices
2/1/2015 14:30	0:01	KWPH	0.003	3.853	AGC MAVG - calculated and Good Engineering and Operating Practices
2/1/2015 14:42	0:52	KWPH	0.730	6.498	AGC MAVG - calculated and Good Engineering and Operating Practices
2/1/2015 15:54	0:01	KWPH	0.007	5.209	AGC MAVG - calculated and Good Engineering and Operating Practices
2/1/2015 16:41	0:02	KWPH	0.012	10.114	AGC MAVG - calculated and Good Engineering and Operating Practices
2/1/2015 16:55	0:10	KWPH	0.204	13.779	AGC MAVG - calculated and Good Engineering and Operating Practices
2/1/2015 17:08	0:06	KWPH	0.112	11.603	AGC MAVG - calculated and Good Engineering and Operating Practices
2/1/2015 17:17	0:03	KWPH	0.043	9.375	AGC MAVG - calculated and Good Engineering and Operating Practices
2/1/2015 17:31	0:04	KWPH	0.081	10.373	AGC MAVG - calculated and Good Engineering and Operating Practices
2/1/2015 17:37	0:13	KWPH	0.136	9.704	AGC MAVG - calculated and Good Engineering and Operating Practices
2/1/2015 17:52	0:01	KWPH	0.002	6.362	AGC MAVG - calculated and Good Engineering and Operating Practices
2/1/2015 17:54	0:04	KWPH	0.040	8.854	AGC MAVG - calculated and Good Engineering and Operating Practices
2/1/2015 17:59	0:02	KWPH	0.018	8.762	AGC MAVG - calculated and Good Engineering and Operating Practices
2/1/2015 18:06	0:06	KWPH	0.109	10.199	AGC MAVG - calculated and Good Engineering and Operating Practices
2/1/2015 18:16	0:07	KWPH	0.088	9.760	AGC MAVG - calculated and Good Engineering and Operating Practices
2/1/2015 18:25	0:03	KWPH	0.025	9.681	AGC MAVG - calculated and Good Engineering and Operating Practices
2/1/2015 18:26	0:08	KWPH	0.142	9.603	AGC MAVG - calculated and Good Engineering and Operating Practices
2/1/2015 18:39	0:03	KWPH	0.041	6.658	AGC MAVG - calculated and Good Engineering and Operating Practices
2/1/2015 18:50	0:01	KWPH	0.008	4.815	AGC MAVG - calculated and Good Engineering and Operating Practices
2/1/2015 19:08	0:01	KWPH	0.004	3.810	AGC MAVG - calculated
2/1/2015 19:24	0:04	KWPH	0.020	1.170	AGC MAVG - calculated
2/1/2015 19:24	0:04	AWP	0.017	10.313	AGC MAVG - calculated
2/1/2015 19:32	0:03	KWPH	0.007	0.290	AGC MAVG - calculated
2/1/2015 19:32	0:21	AWP	0.127	16.683	AGC MAVG - calculated
2/1/2015 19:54	0:20	AWP	0.115	15.107	AGC MAVG - calculated
2/1/2015 20:07	0:02	KWPH	0.004	0.556	AGC MAVG - calculated
2/1/2015 20:10	0:01	KWPH	0.005	0.871	AGC MAVG - calculated
2/1/2015 20:13	0:01	KWPH	0.009	0.510	AGC MAVG - calculated
2/1/2015 20:15	0:03	KWPH	0.007	0.279	AGC MAVG - calculated
2/1/2015 20:15	0:36	AWP	0.127	12.533	AGC MAVG - calculated
2/1/2015 20:55	0:02	AWP	0.004	6.010	AGC MAVG - calculated
2/1/2015 21:15	0:08	AWP	0.022	6.687	AGC MAVG - calculated
2/2/2015 1:20	0:23	AWP	0.077	7.930	AGC MAVG - calculated
2/2/2015 3:15	0:06	AWP	0.303	8.733	AGC MAVG - calculated
2/2/2015 4:24	0:03	AWP	0.009	8.410	AGC MAVG - calculated
2/2/2015 4:25	0:02	KWPH	0.003	0.116	AGC MAVG - calculated
2/2/2015 5:00	0:02	KWPH	0.003	0.061	AGC MAVG - calculated
2/2/2015 5:00	0:15	AWP	0.028	4.773	AGC MAVG - calculated
2/2/2015 5:08	0:03	KWPH	0.005	0.767	AGC MAVG - calculated
2/2/2015 5:10	0:04	KWPH	0.031	0.784	AGC MAVG - calculated
2/2/2015 5:18	0:06	KWPH	0.016	0.332	AGC MAVG - calculated
2/2/2015 5:18	0:23	AWP	0.023	3.363	AGC MAVG - calculated
2/2/2015 5:29	0:04	KWPH	0.009	0.703	AGC MAVG - calculated
2/2/2015 5:45	0:13	KWPH	0.048	1.947	AGC MAVG - calculated
2/2/2015 5:49	0:03	AWP	0.004	2.010	AGC MAVG - calculated
2/2/2015 5:53	0:03	AWP	0.002	1.850	AGC MAVG - calculated
2/2/2015 5:56	0:07	AWP	0.064	1.477	AGC MAVG - calculated
2/2/2015 6:06	0:01	KWPH	0.000	0.867	AGC MAVG - calculated
2/2/2015 6:09	0:01	KWPH	0.006	0.780	AGC MAVG - calculated
2/2/2015 6:11	0:02	KWPH	0.013	0.600	AGC MAVG - calculated
2/2/2015 6:14	0:01	KWPH	0.004	0.333	AGC MAVG - calculated
2/2/2015 7:19	0:09	KWPH	0.018	0.452	AGC MAVG - calculated and Good Engineering and Operating Practices
2/2/2015 7:21	0:01	KWPH	0.001	0.037	AGC MAVG - calculated and Good Engineering and Operating Practices
2/2/2015 7:30	0:02	KWPH	0.006	0.912	AGC MAVG - calculated and Good Engineering and Operating Practices
2/2/2015 7:31	0:02	KWPH	0.008	1.439	AGC MAVG - calculated and Good Engineering and Operating Practices
2/2/2015 7:33	0:03	KWPH	0.007	1.358	AGC MAVG - calculated and Good Engineering and Operating Practices
2/2/2015 7:34	0:01	KWPH	0.002	1.118	AGC MAVG - calculated and Good Engineering and Operating Practices
2/2/2015 7:37	0:01	KWPH	0.001	1.133	AGC MAVG - calculated and Good Engineering and Operating Practices
2/2/2015 7:40	0:03	KWPH	0.007	1.296	AGC MAVG - calculated and Good Engineering and Operating Practices
2/2/2015 7:41	0:01	KWPH	0.001	1.417	AGC MAVG - calculated and Good Engineering and Operating Practices
2/2/2015 7:45	0:06	KWPH	0.021	1.401	AGC MAVG - calculated and Good Engineering and Operating Practices
2/2/2015 7:45	0:06	KWPH	0.029	1.444	AGC MAVG - calculated and Good Engineering and Operating Practices
2/2/2015 7:52	0:01	KWPH	0.003	1.395	AGC MAVG - calculated and Good Engineering and Operating Practices
2/2/2015 7:53	0:02	KWPH	0.007	1.528	AGC MAVG - calculated and Good Engineering and Operating Practices
2/2/2015 7:58	0:06	KWPH	0.046	2.167	AGC MAVG - calculated and Good Engineering and Operating Practices
2/2/2015 8:11	3:16	KWPH	4.712	15.362	AGC MAVG - calculated and Good Engineering and Operating Practices
2/2/2015 11:26	3:27	KWPH	8.450	18.247	AGC MAVG - calculated, Good Engineering and Operating Practices, and Testing
2/2/2015 13:20	0:02	AWP	0.006	0.313	AGC MAVG - calculated and Testing
2/2/2015 13:20	0:02	KWPH	0.013	23.348	AGC MAVG - calculated and Testing
2/2/2015 14:56	1:03	KWPH	1.821	18.107	AGC MAVG - calculated
2/2/2015 16:00	1:47	KWPH	3.952	19.964	AGC MAVG - calculated
2/2/2015 17:59	0:02	KWPH	0.010	20.315	AGC MAVG - calculated
2/2/2015 18:04	0:08	KWPH	0.081	20.134	AGC MAVG - calculated
2/2/2015 18:14	0:01	KWPH	0.003	20.140	AGC MAVG - calculated
2/2/2015 18:19	0:02	KWPH	0.003	20.279	AGC MAVG - calculated
2/2/2015 18:22	0:05	KWPH	0.024	20.263	AGC MAVG - calculated
2/2/2015 18:08	0:05	KWPH	0.013	20.293	AGC MAVG - calculated
2/2/2015 19:15	0:01	KWPH	0.002	20.251	AGC MAVG - calculated
2/2/2015 19:27	0:01	KWPH	0.002	20.279	AGC MAVG - calculated
2/2/2015 19:32	0:06	KWPH	0.046	20.238	AGC MAVG - calculated
2/2/2015 19:45	0:04	KWPH	0.049	20.264	AGC MAVG - calculated
2/2/2015 19:52	0:07	KWPH	0.039	20.209	AGC MAVG - calculated
2/2/2015 20:05	0:01	KWPH	0.007	20.296	AGC MAVG - calculated
2/2/2015 20:10	0:02	KWPH	0.023	20.354	AGC MAVG - calculated
2/2/2015 20:13	0:06	KWPH	0.100	20.137	AGC MAVG - calculated

RSWG Maui Curtailment Report February 2015



Start Date and Time	Duration	IPP Curtailed	Estimate Curtailed MWH	Peak MW Curtailed	AGC MAVG - calculated	Reasons for Curtailment
2/2/2015 20:23	0:02	KWPII	0.010	20.028	AGC MAVG - calculated	
2/2/2015 20:32	0:12	KWPII	0.101	20.377	AGC MAVG - calculated	
2/2/2015 20:48	0:10	KWPII	0.102	20.153	AGC MAVG - calculated	
2/2/2015 21:00	0:20	KWPII	0.117	20.288	AGC MAVG - calculated	
2/2/2015 21:22	0:01	KWPII	0.002	20.290	AGC MAVG - calculated	
2/2/2015 21:29	0:01	KWPII	0.000	20.437	AGC MAVG - calculated	
2/2/2015 21:34	0:01	KWPII	0.003	20.394	AGC MAVG - calculated	
2/2/2015 21:38	0:01	KWPII	0.001	20.349	AGC MAVG - calculated	
2/2/2015 21:58	0:08	KWPII	0.021	20.326	AGC MAVG - calculated	
2/2/2015 22:04	0:01	KWPII	0.004	20.327	AGC MAVG - calculated	
2/2/2015 22:34	0:05	KWPII	0.025	20.253	AGC MAVG - calculated	
2/2/2015 22:34	0:02	KWPII	0.001	20.438	AGC MAVG - calculated	
2/2/2015 23:04	0:01	KWPII	0.000	20.583	AGC MAVG - calculated	
2/2/2015 23:08	0:07	KWPII	0.099	20.557	AGC MAVG - calculated	
2/2/2015 23:37	0:01	KWPII	0.001	20.599	AGC MAVG - calculated	
2/2/2015 23:40	4:00	KWPII	51.587	20.708	AGC MAVG - calculated	
2/3/2015 2:24	0:01	AWE	0.008	11.517	AGC MAVG - calculated	
2/3/2015 2:35	1:01	AWE	4.042	17.873	AGC MAVG - calculated	
2/3/2015 3:41	0:34	KWPII	9.861	20.557	AGC MAVG - calculated	
2/3/2015 3:58	0:14	AWE	0.867	20.207	AGC MAVG - calculated	
2/3/2015 4:17	0:56	KWPII	9.627	20.704	AGC MAVG - calculated	
2/3/2015 5:29	0:24	KWPII	0.774	20.702	AGC MAVG - calculated	
2/3/2015 9:39	0:01	KWPII	0.000	20.798	AGC MAVG - calculated	
2/3/2015 10:18	0:02	KWPII	0.001	20.705	AGC MAVG - calculated	
2/3/2015 10:45	0:01	KWPII	0.005	20.695	AGC MAVG - calculated	
2/3/2015 10:51	0:01	KWPII	0.002	20.703	AGC MAVG - calculated	
2/3/2015 11:21	0:03	KWPII	0.001	20.708	AGC MAVG - calculated	
2/3/2015 11:25	0:02	KWPII	0.000	20.708	AGC MAVG - calculated	
2/3/2015 11:51	0:38	KWPII	1.358	20.708	AGC MAVG - calculated	
2/3/2015 12:31	0:06	KWPII	0.125	20.708	AGC MAVG - calculated	
2/3/2015 12:42	0:02	KWPII	0.001	20.707	AGC MAVG - calculated	
2/3/2015 12:47	0:54	KWPII	3.292	20.708	AGC MAVG - calculated	
2/3/2015 13:48	0:07	KWPII	0.094	20.708	AGC MAVG - calculated	
2/3/2015 13:59	0:20	KWPII	0.552	20.687	AGC MAVG - calculated	
2/3/2015 14:23	0:01	KWPII	0.001	20.689	AGC MAVG - calculated	
2/3/2015 14:38	0:01	KWPII	0.001	20.565	AGC MAVG - calculated	
2/3/2015 15:17	0:04	KWPII	0.032	20.689	AGC MAVG - calculated	
2/3/2015 15:25	0:38	KWPII	1.269	20.503	AGC MAVG - calculated	
2/3/2015 16:08	0:01	KWPII	0.248	18.697	AGC MAVG - calculated	
2/3/2015 16:17	0:03	KWPII	0.073	15.183	AGC MAVG - calculated	
2/3/2015 16:23	0:05	KWPII	0.041	15.338	AGC MAVG - calculated	
2/3/2015 16:29	3:30	KWPII	4.881	18.465	AGC MAVG - calculated	
2/3/2015 19:03	0:03	AWE	0.005	21.000	AGC MAVG - calculated	
2/3/2015 19:07	0:29	AWE	0.140	21.000	AGC MAVG - calculated	
2/3/2015 19:37	0:03	AWE	0.004	21.000	AGC MAVG - calculated	
2/3/2015 19:41	0:01	AWE	0.004	21.000	AGC MAVG - calculated	
2/3/2015 19:43	0:17	AWE	0.023	21.000	AGC MAVG - calculated	
2/3/2015 20:00	2:12	KWPII	1.813	6.492	AGC MAVG - calculated	
2/3/2015 20:02	0:01	AWE	0.000	21.000	AGC MAVG - calculated	
2/3/2015 20:04	0:01	AWE	0.002	21.000	AGC MAVG - calculated	
2/3/2015 20:11	0:01	AWE	0.002	21.000	AGC MAVG - calculated	
2/3/2015 20:15	0:01	AWE	0.000	21.000	AGC MAVG - calculated	
2/3/2015 20:20	0:02	AWE	0.002	21.000	AGC MAVG - calculated	
2/3/2015 20:31	0:02	AWE	0.003	21.000	AGC MAVG - calculated	
2/3/2015 20:34	0:04	AWE	0.004	21.000	AGC MAVG - calculated	
2/3/2015 20:41	0:02	AWE	0.002	21.000	AGC MAVG - calculated	
2/3/2015 20:44	0:03	AWE	0.005	21.000	AGC MAVG - calculated	
2/3/2015 20:48	0:01	AWE	0.001	21.000	AGC MAVG - calculated	
2/3/2015 20:50	0:02	AWE	0.002	21.000	AGC MAVG - calculated	
2/3/2015 22:14	7:48	KWPII	95.819	20.687	AGC MAVG - calculated	
2/3/2015 22:21	0:01	AWE	0.006	19.417	AGC MAVG - calculated	
2/4/2015 1:00	3:12	AWE	14.859	21.000	AGC MAVG - calculated	
2/4/2015 4:47	0:06	AWE	0.067	20.133	AGC MAVG - calculated	
2/4/2015 8:08	0:02	KWPII	0.009	20.653	AGC MAVG - calculated	
2/4/2015 8:10	0:01	KWPII	0.006	20.473	AGC MAVG - calculated	
2/4/2015 8:12	0:01	KWPII	0.014	20.498	AGC MAVG - calculated	
2/4/2015 8:18	0:03	KWPII	0.030	20.283	AGC MAVG - calculated	
2/4/2015 8:23	0:08	KWPII	0.077	20.427	AGC MAVG - calculated	
2/4/2015 8:32	0:01	KWPII	0.002	20.120	AGC MAVG - calculated	
2/4/2015 7:28	0:07	KWPII	0.058	20.535	AGC MAVG - calculated	
2/4/2015 7:37	0:49	KWPII	0.538	20.449	AGC MAVG - calculated	
2/4/2015 8:28	0:34	KWPII	0.408	19.046	AGC MAVG - calculated	
2/4/2015 9:03	1:23	KWPII	2.071	19.310	AGC MAVG - calculated	
2/4/2015 10:30	0:41	KWPII	0.553	19.343	AGC MAVG - calculated	
2/4/2015 11:12	0:05	KWPII	0.029	19.550	AGC MAVG - calculated	
2/4/2015 11:18	0:25	KWPII	0.239	19.700	AGC MAVG - calculated	
2/4/2015 11:44	0:02	KWPII	0.006	19.492	AGC MAVG - calculated	
2/4/2015 11:48	0:04	KWPII	0.010	20.244	AGC MAVG - calculated	
2/4/2015 11:53	0:03	KWPII	0.004	20.331	AGC MAVG - calculated	
2/4/2015 11:57	0:04	KWPII	0.018	20.281	AGC MAVG - calculated	
2/4/2015 12:06	0:01	KWPII	0.012	20.405	AGC MAVG - calculated	
2/4/2015 12:09	0:08	KWPII	0.048	20.386	AGC MAVG - calculated	
2/4/2015 12:18	0:03	KWPII	0.009	20.130	AGC MAVG - calculated	
2/4/2015 12:22	0:04	KWPII	0.009	20.095	AGC MAVG - calculated	
2/4/2015 12:38	0:03	KWPII	0.018	20.267	AGC MAVG - calculated	
2/4/2015 12:43	0:01	KWPII	0.002	19.676	AGC MAVG - calculated	
2/4/2015 12:53	0:01	KWPII	0.001	20.333	AGC MAVG - calculated	
2/4/2015 12:58	0:01	KWPII	0.000	20.388	AGC MAVG - calculated	
2/4/2015 13:06	0:01	KWPII	0.007	20.409	AGC MAVG - calculated	
2/4/2015 13:15	0:02	KWPII	0.008	20.251	AGC MAVG - calculated	
2/4/2015 13:24	0:05	KWPII	0.011	20.281	AGC MAVG - calculated	
2/4/2015 13:30	0:01	KWPII	0.006	19.805	AGC MAVG - calculated	
2/4/2015 13:33	0:13	KWPII	0.105	20.243	AGC MAVG - calculated	
2/4/2015 13:47	0:11	KWPII	0.064	20.158	AGC MAVG - calculated	
2/4/2015 14:04	0:12	KWPII	0.079	20.375	AGC MAVG - calculated	
2/4/2015 14:22	0:03	KWPII	0.007	20.408	AGC MAVG - calculated	
2/4/2015 14:28	0:01	KWPII	0.007	20.385	AGC MAVG - calculated	
2/4/2015 14:33	0:02	KWPII	0.015	20.415	AGC MAVG - calculated	
2/4/2015 14:38	0:01	KWPII	0.003	20.464	AGC MAVG - calculated	
2/4/2015 14:41	0:01	KWPII	0.002	20.831	AGC MAVG - calculated	
2/4/2015 14:43	0:03	KWPII	0.010	20.486	AGC MAVG - calculated	
2/4/2015 14:48	0:25	KWPII	0.198	20.409	AGC MAVG - calculated	
2/4/2015 15:18	0:03	KWPII	0.023	19.877	AGC MAVG - calculated	
2/4/2015 15:20	0:04	KWPII	0.008	20.043	AGC MAVG - calculated	
2/4/2015 15:27	0:04	KWPII	0.013	20.015	AGC MAVG - calculated	
2/4/2015 15:32	0:02	KWPII	0.006	19.850	AGC MAVG - calculated	
2/4/2015 15:38	0:04	KWPII	0.012	20.437	AGC MAVG - calculated	
2/4/2015 15:43	0:03	KWPII	0.019	20.263	AGC MAVG - calculated	
2/4/2015 15:47	0:10	KWPII	0.064	20.208	AGC MAVG - calculated	
2/4/2015 15:58	1:20	KWPII	1.270	20.039	AGC MAVG - calculated	
2/4/2015 17:21	0:15	KWPII	0.087	20.061	AGC MAVG - calculated	
2/4/2015 17:37	0:03	KWPII	0.028	19.588	AGC MAVG - calculated	
2/4/2015 17:42	0:24	KWPII	0.204	18.634	AGC MAVG - calculated	
2/4/2015 18:07	0:07	KWPII	0.058	19.569	AGC MAVG - calculated	

RSWG Maui Curtailment Report February 2015



Start Date and Time	Duration	IPP Curtailed	Estimated Curtailed MWH	Peak MW Curtailed	Reasons for Curtailment
2/4/2015 18 15	0 30	KWPHI	0 393	19 521	AGC MAVG - calculated
2/4/2015 18 47	0 05	KWPHI	0 023	19 058	AGC MAVG - calculated
2/4/2015 18 55	0 04	KWPHI	0 014	19 707	AGC MAVG - calculated
2/4/2015 19 03	0 01	KWPHI	0 000	19 997	AGC MAVG - calculated
2/4/2015 19 06	0 06	KWPHI	0 059	20 221	AGC MAVG - calculated
2/4/2015 19 13	0 02	KWPHI	0 011	19 091	AGC MAVG - calculated
2/4/2015 19 16	0 05	KWPHI	0 043	19 712	AGC MAVG - calculated
2/4/2015 19 22	0 01	KWPHI	0 001	19 588	AGC MAVG - calculated
2/4/2015 19 26	0 18	KWPHI	0 159	19 865	AGC MAVG - calculated
2/4/2015 19 48	0 40	KWPHI	0 428	19 600	AGC MAVG - calculated
2/4/2015 20 34	0 03	KWPHI	0 019	19 953	AGC MAVG - calculated
2/4/2015 20 40	0 42	KWPHI	0 577	20 345	AGC MAVG - calculated
2/4/2015 21 25	0 35	KWPHI	0 721	20 428	AGC MAVG - calculated
2/4/2015 22 01	0 01	KWPHI	0 000	20 068	AGC MAVG - calculated
2/4/2015 22 04	0 03	KWPHI	0 007	20 201	AGC MAVG - calculated
2/4/2015 22 10	0 05	KWPHI	0 031	19 711	AGC MAVG - calculated
2/4/2015 22 18	0 07	KWPHI	0 059	20 055	AGC MAVG - calculated
2/4/2015 22 26	0 02	KWPHI	0 000	19 624	AGC MAVG - calculated
2/4/2015 22 29	0 12	KWPHI	0 368	20 166	AGC MAVG - calculated
2/4/2015 22 44	0 03	KWPHI	0 009	20 080	AGC MAVG - calculated
2/4/2015 22 48	4 15	KWPHI	34 189	20 580	AGC MAVG - calculated
2/5/2015 0 30	0 01	AWE	0 001	21 000	AGC MAVG - calculated
2/5/2015 0 58	0 01	AWE	0 001	21 000	AGC MAVG - calculated
2/5/2015 1 00	0 02	AWE	0 003	21 000	AGC MAVG - calculated
2/5/2015 1 05	0 01	AWE	0 000	21 000	AGC MAVG - calculated
2/5/2015 1 07	0 02	AWE	0 003	21 000	AGC MAVG - calculated
2/5/2015 1 11	0 02	AWE	0 003	21 000	AGC MAVG - calculated
2/5/2015 1 14	0 02	AWE	0 002	21 000	AGC MAVG - calculated
2/5/2015 1 21	0 07	AWE	0 024	21 000	AGC MAVG - calculated
2/5/2015 1 30	1 32	AWE	2 788	21 000	AGC MAVG - calculated
2/5/2015 3 03	0 01	AWE	0 003	21 000	AGC MAVG - calculated
2/5/2015 3 04	1 35	KWPHI	8 944	13 310	AGC MAVG - calculated
2/5/2015 3 22	0 05	AWE	0 011	21 000	AGC MAVG - calculated
2/5/2015 3 29	0 02	AWE	0 004	21 000	AGC MAVG - calculated
2/5/2015 3 56	0 03	AWE	0 005	21 000	AGC MAVG - calculated
2/5/2015 3 56	0 41	AWE	0 279	21 000	AGC MAVG - calculated
2/5/2015 5 18	0 01	KWPHI	0 005	5 588	AGC MAVG - calculated
2/5/2015 5 21	0 01	KWPHI	0 011	5 737	AGC MAVG - calculated
2/5/2015 5 48	0 01	KWPHI	0 029	7 447	AGC MAVG - calculated
2/5/2015 6 56	0 01	KWPHI	0 001	3 618	AGC MAVG - calculated
2/5/2015 7 14	0 01	KWPHI	0 019	5 843	AGC MAVG - calculated
2/5/2015 7 21	0 25	KWPHI	0 465	6 493	AGC MAVG - calculated
2/5/2015 7 48	0 01	KWPHI	0 001	5 082	AGC MAVG - calculated
2/5/2015 7 51	0 48	KWPHI	0 858	7 886	AGC MAVG - calculated
2/5/2015 8 37	0 02	AWE	0 003	21 000	AGC MAVG - calculated
2/5/2015 8 43	0 01	KWPHI	0 002	5 315	AGC MAVG - calculated
2/5/2015 8 46	0 48	KWPHI	0 580	7 004	AGC MAVG - calculated and Good Engineering and Operating Practices
2/5/2015 8 58	0 03	AWE	0 001	21 000	AGC MAVG - calculated
2/5/2015 9 37	0 06	KWPHI	0 057	5 517	AGC MAVG - calculated
2/5/2015 9 41	0 01	AWE	0 001	21 000	AGC MAVG - calculated
2/5/2015 9 44	8 25	KWPHI	14 268	18 205	AGC MAVG - calculated, Good Engineering and Operating Practices, and Testing
2/5/2015 15 07	0 01	AWE	0 001	21 000	AGC MAVG - calculated and Good Engineering and Operating Practices
2/5/2015 16 10	0 04	KWPHI	0 067	11 747	AGC MAVG - calculated
2/5/2015 16 18	0 01	KWPHI	0 032	9 388	AGC MAVG - calculated
2/5/2015 16 20	0 01	KWPHI	0 022	9 903	AGC MAVG - calculated
2/5/2015 16 23	0 02	KWPHI	0 038	9 788	AGC MAVG - calculated
2/5/2015 16 29	0 01	KWPHI	0 021	10 094	AGC MAVG - calculated
2/5/2015 16 34	0 03	KWPHI	0 028	11 837	AGC MAVG - calculated
2/5/2015 16 39	0 01	KWPHI	0 005	8 799	AGC MAVG - calculated
2/5/2015 16 44	0 02	KWPHI	0 043	8 900	AGC MAVG - calculated
2/5/2015 16 50	0 02	KWPHI	0 008	7 010	AGC MAVG - calculated
2/5/2015 16 55	0 02	KWPHI	0 028	6 985	AGC MAVG - calculated
2/5/2015 16 59	0 01	KWPHI	0 003	4 195	AGC MAVG - calculated
2/6/2015 16 59	0 01	AWE	0 002	21 000	AGC MAVG - calculated
2/5/2015 17 08	0 02	KWPHI	0 037	4 417	AGC MAVG - calculated
2/5/2015 17 11	0 04	KWPHI	0 147	6 399	AGC MAVG - calculated
2/5/2015 17 17	0 02	KWPHI	0 121	6 233	AGC MAVG - calculated
2/5/2015 17 23	0 05	KWPHI	0 057	8 043	AGC MAVG - calculated
2/5/2015 17 32	0 01	KWPHI	0 000	8 815	AGC MAVG - calculated
2/5/2015 17 38	0 01	KWPHI	0 013	10 572	AGC MAVG - calculated
2/5/2015 17 42	0 04	KWPHI	0 135	12 775	AGC MAVG - calculated
2/5/2015 17 47	0 01	KWPHI	0 003	6 795	AGC MAVG - calculated
2/5/2015 17 49	0 02	KWPHI	0 036	9 344	AGC MAVG - calculated
2/5/2015 18 02	0 02	KWPHI	0 015	10 663	AGC MAVG - calculated
2/5/2015 18 14	0 02	KWPHI	0 023	5 631	AGC MAVG - calculated
2/6/2015 3 45	0 20	KWPHI	0 258	1 631	AGC MAVG - calculated
2/6/2015 3 45	0 19	AWE	0 779	21 000	AGC MAVG - calculated
2/6/2015 4 08	0 07	KWPHI	0 032	3 140	AGC MAVG - calculated
2/6/2015 4 17	0 01	KWPHI	0 129	3 199	AGC MAVG - calculated
2/6/2015 4 37	0 01	AWE	0 006	13 297	AGC MAVG - calculated
2/6/2015 4 38	0 01	AWE	0 003	13 243	AGC MAVG - calculated
2/6/2015 4 40	0 08	KWPHI	0 038	2 110	AGC MAVG - calculated
2/6/2015 4 45	0 01	AWE	0 006	11 157	AGC MAVG - calculated
2/6/2015 4 50	0 09	KWPHI	0 029	1 870	AGC MAVG - calculated
2/6/2015 4 52	0 01	AWE	0 005	12 073	AGC MAVG - calculated
2/6/2015 4 54	0 01	AWE	0 003	10 893	AGC MAVG - calculated
2/6/2015 4 56	0 02	AWE	0 008	11 587	AGC MAVG - calculated
2/6/2015 5 00	0 11	KWPHI	0 047	1 836	AGC MAVG - calculated
2/6/2015 5 02	0 06	AWE	0 048	13 847	AGC MAVG - calculated
2/6/2015 5 33	0 02	KWPHI	0 003	1 238	AGC MAVG - calculated
2/6/2015 5 33	0 02	AWE	0 008	11 423	AGC MAVG - calculated
2/6/2015 5 38	0 07	AWE	0 032	13 237	AGC MAVG - calculated
2/6/2015 5 56	0 38	KWPHI	0 241	7 836	AGC MAVG - calculated
2/6/2015 5 50	0 01	AWE	0 004	14 003	AGC MAVG - calculated
2/6/2015 6 08	0 04	AWE	0 028	16 180	AGC MAVG - calculated
2/6/2015 6 42	0 01	KWPHI	0 004	8 808	AGC MAVG - calculated
2/6/2015 6 50	0 02	KWPHI	0 023	5 342	AGC MAVG - calculated
2/6/2015 7 08	1 06	KWPHI	0 527	3 758	AGC MAVG - calculated and Testing
2/6/2015 7 28	0 01	AWE	0 001	16 783	AGC MAVG - calculated and Testing
2/6/2015 7 30	0 01	AWE	0 001	20 573	AGC MAVG - calculated and Testing
2/6/2015 7 32	0 01	AWE	0 002	16 500	AGC MAVG - calculated and Testing
2/6/2015 7 36	1 25	AWE	0 808	20 950	AGC MAVG - calculated and Testing
2/6/2015 8 15	0 17	KWPHI	0 077	0 528	AGC MAVG - calculated and Testing
2/6/2015 8 36	0 03	KWPHI	0 002	0 582	AGC MAVG - calculated and Testing
2/6/2015 8 42	0 02	KWPHI	0 000	0 719	AGC MAVG - calculated and Testing
2/6/2015 8 46	0 03	KWPHI	0 005	0 859	AGC MAVG - calculated and Testing
2/6/2015 8 56	0 02	KWPHI	0 002	1 385	AGC MAVG - calculated and Testing
2/6/2015 9 00	0 08	KWPHI	0 033	3 778	AGC MAVG - calculated and Testing
2/6/2015 9 04	0 04	AWE	0 007	20 193	AGC MAVG - calculated and Testing
2/6/2015 9 11	0 13	KWPHI	0 084	3 318	AGC MAVG - calculated and Testing
2/6/2015 9 25	0 01	KWPHI	0 001	2 696	AGC MAVG - calculated and Testing
2/6/2015 9 27	0 03	KWPHI	0 018	3 316	AGC MAVG - calculated and Testing
2/6/2015 9 32	6 39	KWPHI	30 850	16 898	AGC MAVG - calculated, Testing and Good Engineering and Operating Practices
2/6/2015 9 53	0 02	AWE	0 007	21 000	AGC MAVG - calculated and Testing

RSWG Maui Curtailment Report February 2015



Start Date and Time	Duration	IPP Curtailed	Estimated Curtailed MWh	Peak MW Curtailed	AGC MWhG - calculated and Testing	Reasons for Curtailment
2/6/2015 10:35	0:01	AWE	0:000	20:010	AGC MWhG - calculated and Testing	
2/6/2015 10:40	3:48	AWE	17:859	21:000	AGC MWhG - calculated and Testing, and Good Engineering and Operating Practices	
2/6/2015 14:48	0:01	AWE	0:000	21:000	AGC MWhG - calculated	
2/6/2015 18:13	0:02	KWPII	0:021	14:094	AGC MWhG - calculated	
2/6/2015 18:18	0:01	KWPII	0:020	13:791	AGC MWhG - calculated	
2/6/2015 18:20	0:02	KWPII	0:017	13:732	AGC MWhG - calculated	
2/6/2015 18:26	0:01	KWPII	0:018	13:307	AGC MWhG - calculated	
2/6/2015 18:28	0:02	KWPII	0:008	13:190	AGC MWhG - calculated	
2/6/2015 18:35	3:40	KWPII	5:872	18:545	AGC MWhG - calculated	
2/6/2015 20:18	0:07	KWPII	0:070	8:865	AGC MWhG - calculated	
2/6/2015 20:26	0:56	KWPII	0:068	12:515	AGC MWhG - calculated	
2/6/2015 21:12	0:22	AWE	0:226	20:733	AGC MWhG - calculated	
2/6/2015 21:23	0:08	KWPII	0:071	1:078	AGC MWhG - calculated	
2/6/2015 21:40	0:34	KWPII	0:440	9:031	AGC MWhG - calculated	
2/6/2015 22:15	1:00	KWPII	1:152	12:983	AGC MWhG - calculated	
2/6/2015 23:16	0:08	KWPII	0:081	6:371	AGC MWhG - calculated	
2/6/2015 23:23	0:05	KWPII	0:022	4:122	AGC MWhG - calculated	
2/6/2015 23:30	0:02	KWPII	0:010	5:330	AGC MWhG - calculated	
2/6/2015 23:34	0:17	KWPII	0:218	7:401	AGC MWhG - calculated	
2/6/2015 23:52	0:13	KWPII	0:130	4:788	AGC MWhG - calculated	
2/7/2015 0:07	0:01	AWE	0:005	12:343	AGC MWhG - calculated	
2/7/2015 0:07	0:10	KWPII	0:043	2:237	AGC MWhG - calculated	
2/7/2015 0:10	1:27	AWE	0:432	21:000	AGC MWhG - calculated	
2/7/2015 0:19	0:01	KWPII	0:006	0:357	AGC MWhG - calculated	
2/7/2015 0:21	0:04	KWPII	0:010	0:259	AGC MWhG - calculated	
2/7/2015 0:31	0:05	KWPII	0:028	0:559	AGC MWhG - calculated	
2/7/2015 0:40	0:06	KWPII	0:016	0:488	AGC MWhG - calculated	
2/7/2015 0:58	0:01	KWPII	0:000	0:353	AGC MWhG - calculated	
2/7/2015 1:05	0:03	KWPII	0:011	0:307	AGC MWhG - calculated	
2/7/2015 1:10	0:02	KWPII	0:011	0:404	AGC MWhG - calculated	
2/7/2015 1:13	0:04	KWPII	0:019	0:402	AGC MWhG - calculated	
2/7/2015 1:26	0:03	KWPII	0:013	0:457	AGC MWhG - calculated	
2/7/2015 1:35	0:01	KWPII	0:000	1:383	AGC MWhG - calculated	
2/7/2015 1:40	0:21	KWPII	0:350	4:822	AGC MWhG - calculated	
2/7/2015 1:42	0:02	AWE	0:004	21:000	AGC MWhG - calculated	
2/7/2015 1:55	0:03	AWE	0:010	21:000	AGC MWhG - calculated	
2/7/2015 3:15	0:01	KWPII	0:008	5:803	AGC MWhG - calculated	
2/7/2015 3:32	0:01	KWPII	0:007	2:212	AGC MWhG - calculated	
2/7/2015 9:19	0:06	AWE	0:007	0:100	AGC MWhG - calculated	
2/7/2015 9:27	1:22	AWE	0:574	0:853	AGC MWhG - calculated and Good Engineering and Operating Practices	
2/7/2015 10:51	0:08	AWE	0:038	0:450	AGC MWhG - calculated	
2/7/2015 10:54	0:03	KWPII	0:003	0:084	AGC MWhG - calculated	
2/7/2015 11:03	0:01	KWPII	0:007	2:738	AGC MWhG - calculated	
2/7/2015 11:07	0:03	KWPII	0:007	3:817	AGC MWhG - calculated	
2/7/2015 11:13	0:03	KWPII	0:026	3:772	AGC MWhG - calculated	
2/7/2015 11:18	0:03	KWPII	0:016	3:328	AGC MWhG - calculated	
2/7/2015 11:25	0:02	KWPII	0:019	4:051	AGC MWhG - calculated	
2/7/2015 11:28	0:03	KWPII	0:023	3:738	AGC MWhG - calculated	
2/7/2015 11:34	0:03	KWPII	0:018	4:153	AGC MWhG - calculated	
2/7/2015 11:38	0:10	KWPII	0:078	4:273	AGC MWhG - calculated	
2/7/2015 11:49	0:03	KWPII	0:012	2:496	AGC MWhG - calculated	
2/7/2015 15:20	0:02	KWPII	0:020	5:522	AGC MWhG - calculated and Good Engineering and Operating Practices	
2/7/2015 15:48	0:02	KWPII	0:018	8:088	AGC MWhG - calculated and Good Engineering and Operating Practices	
2/7/2015 16:50	0:01	KWPII	0:005	5:302	AGC MWhG - calculated and Good Engineering and Operating Practices	
2/7/2015 17:48	0:01	KWPII	0:007	6:713	AGC MWhG - calculated	
2/7/2015 18:17	0:01	KWPII	0:007	5:848	AGC MWhG - calculated	
2/7/2015 18:25	0:02	KWPII	0:012	8:036	AGC MWhG - calculated	
2/7/2015 18:41	0:01	KWPII	0:005	4:831	AGC MWhG - calculated	
2/7/2015 18:58	0:01	KWPII	0:003	4:881	AGC MWhG - calculated	
2/7/2015 20:09	1:38	KWPII	1:034	5:858	AGC MWhG - calculated	
2/7/2015 21:48	0:05	KWPII	0:020	1:487	AGC MWhG - calculated	
2/7/2015 22:02	0:11	KWPII	0:034	1:248	AGC MWhG - calculated	
2/8/2015 1:41	0:01	AWE	0:001	0:047	AGC MWhG - calculated	
2/8/2015 2:08	0:11	KWPII	0:040	0:269	AGC MWhG - calculated	
2/8/2015 2:15	0:02	AWE	0:001	0:033	AGC MWhG - calculated	
2/8/2015 2:24	0:07	AWE	0:062	1:067	AGC MWhG - calculated	
2/8/2015 2:24	0:13	KWPII	0:060	0:595	AGC MWhG - calculated	
2/8/2015 2:32	0:02	AWE	0:000	1:087	AGC MWhG - calculated	
2/8/2015 2:35	0:01	AWE	0:000	1:183	AGC MWhG - calculated	
2/8/2015 2:49	0:12	KWPII	0:072	0:888	AGC MWhG - calculated	
2/8/2015 2:54	0:06	AWE	0:045	1:263	AGC MWhG - calculated	
2/8/2015 3:11	0:06	KWPII	0:044	0:718	AGC MWhG - calculated	
2/8/2015 4:03	0:20	AWE	0:128	1:300	AGC MWhG - calculated	
2/8/2015 4:28	0:05	KWPII	0:003	0:060	AGC MWhG - calculated	
2/8/2015 6:03	0:05	AWE	0:009	0:207	AGC MWhG - calculated	
2/8/2015 6:03	0:04	AWE	0:004	3:063	AGC MWhG - calculated	
2/8/2015 6:08	0:02	AWE	0:003	2:413	AGC MWhG - calculated	
2/8/2015 6:11	0:01	AWE	0:002	2:033	AGC MWhG - calculated	
2/8/2015 6:13	0:02	AWE	0:003	2:330	AGC MWhG - calculated	
2/8/2015 6:17	0:02	AWE	0:004	2:383	AGC MWhG - calculated	
2/8/2015 6:20	0:05	AWE	0:007	2:200	AGC MWhG - calculated	
2/8/2015 6:28	0:07	AWE	0:008	2:357	AGC MWhG - calculated	
2/8/2015 6:36	0:03	AWE	0:004	2:477	AGC MWhG - calculated	
2/8/2015 6:40	0:02	AWE	0:001	1:823	AGC MWhG - calculated	
2/8/2015 6:42	0:01	KWPII	0:001	0:313	AGC MWhG - calculated	
2/8/2015 6:48	0:03	AWE	0:004	2:473	AGC MWhG - calculated	
2/8/2015 6:50	0:05	AWE	0:006	2:073	AGC MWhG - calculated	
2/8/2015 6:50	0:01	AWE	0:002	1:977	AGC MWhG - calculated	
2/8/2015 6:58	0:01	AWE	0:000	1:500	AGC MWhG - calculated	
2/8/2015 9:02	0:01	AWE	0:000	1:413	AGC MWhG - calculated	
2/8/2015 9:05	0:03	KWPII	0:001	0:024	AGC MWhG - calculated	
2/8/2015 9:06	0:01	AWE	0:001	1:447	AGC MWhG - calculated	
2/8/2015 9:08	0:02	AWE	0:003	1:200	AGC MWhG - calculated	
2/8/2015 9:08	0:02	KWPII	0:002	0:140	AGC MWhG - calculated	
2/8/2015 9:11	0:01	AWE	0:001	1:483	AGC MWhG - calculated	
2/8/2015 9:14	0:01	AWE	0:002	1:807	AGC MWhG - calculated	
2/8/2015 9:16	0:17	AWE	0:018	2:853	AGC MWhG - calculated	
2/8/2015 9:34	0:02	AWE	0:000	1:400	AGC MWhG - calculated	
2/8/2015 9:39	0:02	AWE	0:002	1:210	AGC MWhG - calculated	
2/8/2015 9:42	0:01	AWE	0:000	1:450	AGC MWhG - calculated	
2/8/2015 9:44	0:01	AWE	0:001	1:877	AGC MWhG - calculated	
2/8/2015 9:48	0:01	AWE	0:001	1:197	AGC MWhG - calculated	
2/8/2015 10:03	0:01	AWE	0:000	2:413	AGC MWhG - calculated	
2/8/2015 10:06	0:03	AWE	0:003	2:620	AGC MWhG - calculated	
2/8/2015 10:10	0:02	AWE	0:002	2:547	AGC MWhG - calculated	
2/8/2015 10:13	0:03	AWE	0:003	2:750	AGC MWhG - calculated	
2/8/2015 10:17	0:10	AWE	0:013	2:493	AGC MWhG - calculated	
2/8/2015 10:28	0:07	AWE	0:005	2:417	AGC MWhG - calculated	
2/8/2015 10:40	0:06	AWE	0:003	2:400	AGC MWhG - calculated	
2/8/2015 10:47	0:03	AWE	0:001	1:700	AGC MWhG - calculated	
2/8/2015 11:07	0:01	KWPII	0:001	0:181	AGC MWhG - calculated	
2/8/2015 11:07	0:02	AWE	0:006	1:280	AGC MWhG - calculated	
2/8/2015 11:11	0:02	AWE	0:003	1:443	AGC MWhG - calculated	
2/8/2015 12:05	0:01	AWE	0:007	0:437	AGC MWhG - calculated	

RSWG Maui Curtailment Report February 2015



Start Date and Time	Duration	IPP Curtailed	Estimated Curtailed MWH	Peak MW Curtailed	Reasons for Curtailment
2/8/2015 12:57	0:01	AWE	0:001	0:050	AGC MAVG - calculated
2/8/2015 13:01	0:04	AWE	0:000	0:007	AGC MAVG - calculated
2/8/2015 14:07	0:04	KWPH	0:008	0:144	AGC MAVG - calculated
2/8/2015 14:07	0:04	AWE	0:043	0:080	AGC MAVG - calculated
2/8/2015 14:07	0:04	KWPH	0:010	0:548	AGC MAVG - calculated
2/8/2015 14:32	0:01	AWE	0:009	0:630	AGC MAVG - calculated
2/8/2015 14:33	0:05	KWPH	0:007	0:885	AGC MAVG - calculated
2/8/2015 14:37	0:01	AWE	0:017	0:793	AGC MAVG - calculated
2/8/2015 19:45	3:08	KWPH	3:827	11:555	AGC MAVG - calculated
2/8/2015 22:52	0:01	KWPH	0:010	10:253	AGC MAVG - calculated
2/8/2015 22:55	0:08	KWPH	0:149	10:718	AGC MAVG - calculated
2/8/2015 23:04	0:01	KWPH	0:000	11:189	AGC MAVG - calculated
2/8/2015 23:08	0:13	KWPH	0:261	11:380	AGC MAVG - calculated
2/8/2015 23:20	0:19	KWPH	0:371	10:859	AGC MAVG - calculated
2/8/2015 23:44	0:18	KWPH	0:580	11:013	AGC MAVG - calculated
2/8/2015 0:04	0:52	KWPH	1:843	11:452	AGC MAVG - calculated
2/8/2015 0:57	0:08	KWPH	0:174	10:865	AGC MAVG - calculated
2/8/2015 1:07	0:16	KWPH	0:347	11:352	AGC MAVG - calculated
2/8/2015 1:24	0:06	KWPH	0:157	10:533	AGC MAVG - calculated
2/8/2015 1:31	0:02	KWPH	0:032	10:611	AGC MAVG - calculated
2/8/2015 1:35	0:01	KWPH	0:010	10:788	AGC MAVG - calculated
2/8/2015 1:37	0:03	KWPH	0:084	10:737	AGC MAVG - calculated
2/8/2015 1:42	0:12	KWPH	0:338	12:455	AGC MAVG - calculated
2/8/2015 1:55	0:18	KWPH	0:574	12:818	AGC MAVG - calculated
2/8/2015 2:14	0:01	KWPH	0:029	11:787	AGC MAVG - calculated
2/8/2015 2:18	2:34	KWPH	5:494	18:073	AGC MAVG - calculated
2/8/2015 4:51	0:22	KWPH	0:400	16:380	AGC MAVG - calculated
2/8/2015 5:14	0:08	KWPH	0:134	16:174	AGC MAVG - calculated
2/8/2015 5:22	0:05	KWPH	0:106	16:552	AGC MAVG - calculated
2/8/2015 5:28	0:01	KWPH	0:010	16:613	AGC MAVG - calculated
2/8/2015 5:32	0:05	KWPH	0:115	17:268	AGC MAVG - calculated
2/8/2015 5:41	10:57	KWPH	25:185	17:903	AGC MAVG - calculated and Testing
2/8/2015 16:40	0:01	KWPH	0:003	14:403	AGC MAVG - calculated
2/8/2015 16:45	0:02	KWPH	0:022	17:078	AGC MAVG - calculated
2/8/2015 16:52	0:06	KWPH	0:060	18:112	AGC MAVG - calculated
2/8/2015 16:59	0:04	KWPH	0:080	17:395	AGC MAVG - calculated
2/8/2015 17:06	0:03	KWPH	0:048	17:076	AGC MAVG - calculated
2/8/2015 17:10	0:18	KWPH	0:275	19:244	AGC MAVG - calculated
2/8/2015 17:29	0:35	KWPH	0:800	19:881	AGC MAVG - calculated and Operating Conditions on Company's System
2/8/2015 18:08	0:21	KWPH	0:254	20:283	AGC MAVG - calculated and Operating Conditions on Company's System
2/8/2015 18:30	0:08	KWPH	0:040	20:273	AGC MAVG - calculated and Operating Conditions on Company's System
2/8/2015 18:49	0:02	KWPH	0:001	20:582	AGC MAVG - calculated and Operating Conditions on Company's System
2/8/2015 18:54	0:03	KWPH	0:022	20:469	AGC MAVG - calculated and Operating Conditions on Company's System
2/8/2015 18:59	0:04	KWPH	0:024	20:256	AGC MAVG - calculated and Operating Conditions on Company's System
2/8/2015 19:11	0:02	KWPH	0:001	20:623	AGC MAVG - calculated and Operating Conditions on Company's System
2/8/2015 19:17	0:01	KWPH	0:004	20:473	AGC MAVG - calculated and Operating Conditions on Company's System
2/8/2015 19:20	0:02	KWPH	0:003	20:385	AGC MAVG - calculated and Operating Conditions on Company's System
2/8/2015 19:23	0:01	KWPH	0:001	20:419	AGC MAVG - calculated and Operating Conditions on Company's System
2/8/2015 19:27	0:03	KWPH	0:018	20:615	AGC MAVG - calculated and Operating Conditions on Company's System
2/8/2015 19:34	0:05	KWPH	0:083	20:629	AGC MAVG - calculated and Operating Conditions on Company's System
2/8/2015 19:40	0:01	KWPH	0:000	20:580	AGC MAVG - calculated and Operating Conditions on Company's System
2/8/2015 19:45	0:03	KWPH	0:013	20:428	AGC MAVG - calculated and Operating Conditions on Company's System
2/8/2015 19:49	0:01	KWPH	0:002	20:362	AGC MAVG - calculated and Operating Conditions on Company's System
2/8/2015 19:51	0:02	KWPH	0:001	20:511	AGC MAVG - calculated and Operating Conditions on Company's System
2/8/2015 20:03	0:04	KWPH	0:014	20:548	AGC MAVG - calculated and Operating Conditions on Company's System
2/8/2015 20:08	0:43	KWPH	0:598	20:398	AGC MAVG - calculated and Operating Conditions on Company's System
2/8/2015 20:52	0:03	KWPH	0:033	19:583	AGC MAVG - calculated and Operating Conditions on Company's System
2/8/2015 20:56	0:02	KWPH	0:003	19:418	AGC MAVG - calculated and Operating Conditions on Company's System
2/8/2015 21:00	0:01	KWPH	0:003	19:641	AGC MAVG - calculated and Operating Conditions on Company's System
2/8/2015 21:02	0:04	KWPH	0:018	19:968	AGC MAVG - calculated and Operating Conditions on Company's System
2/8/2015 21:07	0:01	KWPH	0:002	20:000	AGC MAVG - calculated and Operating Conditions on Company's System
2/8/2015 21:14	0:01	KWPH	0:002	20:585	AGC MAVG - calculated and Operating Conditions on Company's System
2/8/2015 21:17	0:03	KWPH	0:009	20:518	AGC MAVG - calculated and Operating Conditions on Company's System
2/8/2015 21:21	0:04	KWPH	0:010	20:394	AGC MAVG - calculated and Operating Conditions on Company's System
2/8/2015 21:27	0:01	KWPH	0:000	20:174	AGC MAVG - calculated and Operating Conditions on Company's System
2/8/2015 21:29	8:02	KWPH	0:002	20:294	AGC MAVG - calculated and Operating Conditions on Company's System
2/8/2015 21:32	0:01	KWPH	0:001	20:235	AGC MAVG - calculated and Operating Conditions on Company's System
2/8/2015 21:38	0:02	KWPH	0:000	20:182	AGC MAVG - calculated and Operating Conditions on Company's System
2/8/2015 21:40	0:02	KWPH	0:006	20:418	AGC MAVG - calculated and Operating Conditions on Company's System
2/8/2015 21:49	0:01	KWPH	0:002	20:444	AGC MAVG - calculated and Operating Conditions on Company's System
2/8/2015 21:52	0:03	KWPH	0:011	20:131	AGC MAVG - calculated and Operating Conditions on Company's System
2/8/2015 21:56	0:05	KWPH	0:073	20:282	AGC MAVG - calculated and Operating Conditions on Company's System
2/8/2015 22:02	0:01	KWPH	0:002	18:648	AGC MAVG - calculated and Operating Conditions on Company's System
2/8/2015 22:04	0:52	KWPH	0:629	20:195	AGC MAVG - calculated and Operating Conditions on Company's System
2/8/2015 22:58	0:12	KWPH	0:157	19:800	AGC MAVG - calculated and Operating Conditions on Company's System
2/8/2015 23:11	0:01	KWPH	0:004	19:538	AGC MAVG - calculated and Operating Conditions on Company's System
2/8/2015 23:14	0:01	KWPH	0:004	19:899	AGC MAVG - calculated and Operating Conditions on Company's System
2/8/2015 23:18	8:57	KWPH	80:127	20:224	AGC MAVG - calculated and Operating Conditions on Company's System
2/10/2015 0:01	0:01	AWE	0:007	20:933	AGC MAVG - calculated and Operating Conditions on Company's System
2/10/2015 0:20	0:25	AWE	0:231	21:000	AGC MAVG - calculated and Operating Conditions on Company's System
2/10/2015 0:48	0:04	AWE	0:026	17:047	AGC MAVG - calculated and Operating Conditions on Company's System
2/10/2015 1:18	2:40	AWE	1:367	21:000	AGC MAVG - calculated and Operating Conditions on Company's System
2/10/2015 3:50	0:40	AWE	0:248	21:000	AGC MAVG - calculated and Operating Conditions on Company's System
2/10/2015 4:41	0:08	AWE	0:037	21:000	AGC MAVG - calculated and Operating Conditions on Company's System
2/10/2015 4:48	0:03	AWE	0:003	21:000	AGC MAVG - calculated and Operating Conditions on Company's System
2/10/2015 4:54	0:02	AWE	0:006	21:000	AGC MAVG - calculated and Operating Conditions on Company's System
2/10/2015 4:57	0:01	AWE	0:002	21:000	AGC MAVG - calculated and Operating Conditions on Company's System
2/10/2015 6:21	0:13	KWPH	0:419	20:188	AGC MAVG - calculated and Testing
2/10/2015 6:35	1:42	KWPH	2:765	18:625	AGC MAVG - calculated, Testing, and Good Engineering and Operating Practices
2/10/2015 6:19	0:43	KWPH	0:827	10:878	AGC MAVG - calculated, Testing, and Good Engineering and Operating Practices
2/10/2015 6:40	0:03	AWE	0:007	4:170	AGC MAVG - calculated and Testing
2/10/2015 6:46	0:08	AWE	0:017	5:510	AGC MAVG - calculated and Testing
2/10/2015 6:58	0:10	AWE	0:023	5:233	AGC MAVG - calculated and Testing
2/10/2015 9:07	0:04	KWPH	0:031	5:031	AGC MAVG - calculated and Testing
2/10/2015 9:08	0:01	AWE	0:001	3:580	AGC MAVG - calculated and Testing
2/10/2015 9:13	0:11	KWPH	0:177	6:516	AGC MAVG - calculated and Testing
2/10/2015 9:18	0:02	AWE	0:005	5:587	AGC MAVG - calculated and Testing
2/10/2015 9:21	0:01	AWE	0:004	5:567	AGC MAVG - calculated and Testing
2/10/2015 9:25	0:11	KWPH	0:135	5:425	AGC MAVG - calculated and Testing
2/10/2015 9:27	0:07	AWE	0:014	3:960	AGC MAVG - calculated and Testing
2/10/2015 9:40	0:06	KWPH	0:098	6:066	AGC MAVG - calculated and Testing
2/10/2015 9:44	0:01	AWE	0:002	4:460	AGC MAVG - calculated and Testing
2/10/2015 9:48	0:43	KWPH	0:596	6:911	AGC MAVG - calculated and Testing
2/10/2015 10:05	0:11	AWE	0:028	6:210	AGC MAVG - calculated and Testing
2/10/2015 10:17	0:01	AWE	0:001	2:420	AGC MAVG - calculated and Testing
2/10/2015 10:24	0:03	AWE	0:011	1:567	AGC MAVG - calculated and Testing
2/10/2015 10:33	0:05	KWPH	0:055	3:694	AGC MAVG - calculated and Testing
2/10/2015 10:38	0:01	AWE	0:001	3:133	AGC MAVG - calculated and Testing
2/10/2015 10:40	0:13	KWPH	0:157	7:507	AGC MAVG - calculated and Testing
2/10/2015 10:57	0:06	KWPH	0:109	8:045	AGC MAVG - calculated and Testing
2/10/2015 11:04	0:27	KWPH	0:296	6:674	AGC MAVG - calculated and Testing
2/10/2015 11:10	0:03	AWE	0:007	3:460	AGC MAVG - calculated and Testing
2/10/2015 11:24	0:01	AWE	0:000	1:753	AGC MAVG - calculated and Testing
2/10/2015 11:32	0:01	KWPH	0:001	5:859	AGC MAVG - calculated and Testing

RSWG Maui Curtailment Report February 2015



Start Date and Time	Duration	IPP Curtailed	Estimated Curtailed MWhr	Peak MW Curtailed	Reasons for Curtailment
2/10/2015 11:35	0:07	KWPII	0.068	7.400	AGC MAVG - calculated and Testing
2/10/2015 11:44	2:05	KWPII	3.530	17.004	AGC MAVG - calculated
2/10/2015 13:51	1:14	KWPII	2.197	15.859	AGC MAVG - calculated
2/10/2015 15:07	0:04	KWPII	0.128	13.353	AGC MAVG - calculated
2/10/2015 15:20	0:02	KWPII	0.085	13.573	AGC MAVG - calculated
2/10/2015 15:25	0:02	KWPII	0.038	12.853	AGC MAVG - calculated
2/10/2015 15:30	0:01	KWPII	0.010	13.833	AGC MAVG - calculated
2/10/2015 15:32	0:02	KWPII	0.048	13.557	AGC MAVG - calculated
2/10/2015 15:38	0:08	KWPII	0.187	13.598	AGC MAVG - calculated
2/10/2015 15:53	0:02	KWPII	0.031	11.943	AGC MAVG - calculated
2/10/2015 16:01	0:08	KWPII	0.204	15.568	AGC MAVG - calculated
2/10/2015 16:10	0:04	KWPII	0.028	11.538	AGC MAVG - calculated
2/10/2015 16:12	0:01	KWPII	0.028	11.208	AGC MAVG - calculated
2/10/2015 16:15	0:01	KWPII	0.008	12.718	AGC MAVG - calculated
2/10/2015 16:20	0:05	KWPII	0.231	16.817	AGC MAVG - calculated
2/10/2015 16:26	0:01	KWPII	0.018	15.583	AGC MAVG - calculated
2/10/2015 16:28	0:04	KWPII	0.090	15.810	AGC MAVG - calculated
2/10/2015 16:33	0:05	KWPII	0.150	16.182	AGC MAVG - calculated
2/10/2015 16:39	0:08	KWPII	0.212	17.734	AGC MAVG - calculated
2/10/2015 16:48	0:04	KWPII	0.113	13.044	AGC MAVG - calculated
2/10/2015 16:54	0:03	KWPII	0.044	10.409	AGC MAVG - calculated
2/10/2015 17:00	0:01	KWPII	0.013	10.008	AGC MAVG - calculated
2/10/2015 17:03	0:02	KWPII	0.045	13.205	AGC MAVG - calculated
2/10/2015 17:14	0:02	KWPII	0.039	12.780	AGC MAVG - calculated
2/10/2015 17:18	0:06	KWPII	0.142	14.428	AGC MAVG - calculated
2/10/2015 17:33	0:01	KWPII	0.031	10.240	AGC MAVG - calculated
2/10/2015 17:37	0:01	KWPII	0.012	9.850	AGC MAVG - calculated
2/10/2015 17:40	0:01	KWPII	0.016	9.523	AGC MAVG - calculated
2/10/2015 17:44	0:01	KWPII	0.015	8.718	AGC MAVG - calculated
2/10/2015 17:54	0:02	KWPII	0.057	12.050	AGC MAVG - calculated
2/10/2015 17:57	0:01	KWPII	0.005	10.989	AGC MAVG - calculated
2/10/2015 18:02	0:01	KWPII	0.023	11.792	AGC MAVG - calculated
2/10/2015 18:05	0:02	KWPII	0.010	12.857	AGC MAVG - calculated
2/10/2015 18:14	0:01	KWPII	0.014	12.411	AGC MAVG - calculated
2/10/2015 18:19	0:03	KWPII	0.062	14.214	AGC MAVG - calculated
2/10/2015 18:36	0:01	KWPII	0.008	12.684	AGC MAVG - calculated
2/10/2015 18:36	0:01	KWPII	0.025	12.437	AGC MAVG - calculated
2/10/2015 18:42	0:02	KWPII	0.029	12.047	AGC MAVG - calculated
2/10/2015 18:50	0:01	KWPII	0.013	8.407	AGC MAVG - calculated
2/10/2015 19:01	0:01	KWPII	0.020	8.481	AGC MAVG - calculated
2/10/2015 19:23	0:01	KWPII	0.015	6.020	AGC MAVG - calculated
2/10/2015 19:57	0:01	KWPII	0.020	8.778	AGC MAVG - calculated
2/10/2015 19:59	0:01	KWPII	0.022	8.380	AGC MAVG - calculated
2/10/2015 20:12	0:01	KWPII	0.025	10.710	AGC MAVG - calculated
2/10/2015 20:23	0:01	KWPII	0.013	9.064	AGC MAVG - calculated
2/10/2015 20:30	0:03	KWPII	0.073	9.809	AGC MAVG - calculated
2/10/2015 20:41	0:01	KWPII	0.023	10.068	AGC MAVG - calculated
2/10/2015 20:49	0:02	KWPII	0.027	11.503	AGC MAVG - calculated
2/10/2015 20:55	0:02	KWPII	0.032	14.158	AGC MAVG - calculated
2/10/2015 20:59	0:01	KWPII	0.021	15.079	AGC MAVG - calculated
2/10/2015 21:01	0:05	KWPII	0.080	15.822	AGC MAVG - calculated
2/10/2015 21:30	0:02	KWPII	0.014	16.532	AGC MAVG - calculated
2/10/2015 21:34	0:07	KWPII	0.278	15.814	AGC MAVG - calculated
2/10/2015 21:45	0:09	KWPII	0.236	13.078	AGC MAVG - calculated
2/10/2015 21:53	0:13	KWPII	0.344	14.718	AGC MAVG - calculated
2/10/2015 22:07	0:01	KWPII	0.007	13.848	AGC MAVG - calculated
2/10/2015 22:09	0:40	KWPII	2.036	18.684	AGC MAVG - calculated
2/10/2015 22:53	0:01	KWPII	0.008	18.711	AGC MAVG - calculated
2/10/2015 23:06	0:02	KWPII	0.008	18.653	AGC MAVG - calculated
2/10/2015 23:32	0:22	KWPII	0.647	18.189	AGC MAVG - calculated
2/10/2015 23:57	1:24	KWPII	14.847	17.211	AGC MAVG - calculated
2/11/2015 0:33	0:05	AWE	0.028	21.000	AGC MAVG - calculated
2/11/2015 0:39	0:01	AWE	0.011	20.997	AGC MAVG - calculated
2/11/2015 0:41	0:01	AWE	0.002	20.620	AGC MAVG - calculated
2/11/2015 0:43	0:04	AWE	0.020	21.000	AGC MAVG - calculated
2/11/2015 0:51	0:03	AWE	0.032	20.290	AGC MAVG - calculated
2/11/2015 0:55	0:06	AWE	0.144	20.487	AGC MAVG - calculated
2/11/2015 1:06	0:08	AWE	0.101	21.000	AGC MAVG - calculated
2/11/2015 1:13	0:03	AWE	0.084	20.027	AGC MAVG - calculated
2/11/2015 1:22	3:43	KWPII	39.341	14.747	AGC MAVG - calculated
2/11/2015 1:53	0:18	AWE	0.741	19.167	AGC MAVG - calculated
2/11/2015 2:11	0:20	AWE	0.807	17.273	AGC MAVG - calculated
2/11/2015 2:35	1:57	AWE	5.744	21.000	AGC MAVG - calculated
2/11/2015 4:30	0:03	AWE	0.013	21.000	AGC MAVG - calculated
2/11/2015 4:37	0:06	AWE	0.030	21.000	AGC MAVG - calculated
2/11/2015 4:45	0:02	AWE	0.001	21.000	AGC MAVG - calculated
2/11/2015 4:50	0:01	AWE	0.000	21.000	AGC MAVG - calculated
2/11/2015 4:59	0:01	AWE	0.002	21.000	AGC MAVG - calculated
2/11/2015 5:08	0:09	KWPII	0.664	11.484	AGC MAVG - calculated
2/11/2015 5:18	0:03	KWPII	0.059	11.119	AGC MAVG - calculated
2/11/2015 5:40	0:01	KWPII	0.028	11.419	AGC MAVG - calculated
2/11/2015 5:43	0:03	KWPII	0.024	12.111	AGC MAVG - calculated
2/11/2015 6:01	0:01	KWPII	0.015	12.176	AGC MAVG - calculated
2/11/2015 6:06	0:02	KWPII	0.037	12.139	AGC MAVG - calculated
2/11/2015 6:11	0:01	KWPII	0.023	12.000	AGC MAVG - calculated
2/11/2015 6:32	0:02	KWPII	0.054	14.735	AGC MAVG - calculated
2/11/2015 6:55	0:03	KWPII	0.032	12.186	AGC MAVG - calculated
2/11/2015 7:02	0:01	KWPII	0.016	7.791	AGC MAVG - calculated
2/11/2015 7:04	0:02	KWPII	0.041	6.859	AGC MAVG - calculated
2/11/2015 7:07	0:01	KWPII	0.011	5.507	AGC MAVG - calculated
2/11/2015 7:32	0:21	KWPII	0.289	7.512	AGC MAVG - calculated
2/11/2015 7:55	0:24	KWPII	0.290	8.731	AGC MAVG - calculated
2/11/2015 8:22	1:05	KWPII	1.305	13.354	AGC MAVG - calculated
2/11/2015 9:28	0:16	KWPII	0.298	8.024	AGC MAVG - calculated
2/11/2015 9:48	0:37	KWPII	0.578	8.158	AGC MAVG - calculated
2/11/2015 10:26	0:45	KWPII	0.845	10.443	AGC MAVG - calculated
2/11/2015 11:14	0:04	KWPII	0.027	5.254	AGC MAVG - calculated
2/11/2015 11:19	0:51	KWPII	0.831	8.394	AGC MAVG - calculated and Testing
2/11/2015 11:26	0:02	AWE	0.003	21.000	AGC MAVG - calculated and Testing
2/11/2015 12:11	5:57	KWPII	10.826	14.970	AGC MAVG - calculated
2/11/2015 18:10	0:04	KWPII	0.045	4.300	AGC MAVG - calculated
2/11/2015 18:18	0:04	KWPII	0.036	5.387	AGC MAVG - calculated
2/11/2015 18:21	0:50	KWPII	0.456	5.589	AGC MAVG - calculated
2/11/2015 18:58	1:27	AWE	0.308	16.560	AGC MAVG - calculated
2/11/2015 20:27	0:05	AWE	0.008	1.977	AGC MAVG - calculated
2/11/2015 20:33	0:02	AWE	0.002	1.200	AGC MAVG - calculated
2/11/2015 20:37	0:11	AWE	0.076	2.500	AGC MAVG - calculated
2/12/2015 8:35	0:04	KWPII	0.008	0.288	AGC MAVG - calculated
2/12/2015 8:40	0:09	KWPII	0.037	0.440	AGC MAVG - calculated
2/12/2015 8:54	0:34	KWPII	0.992	2.134	AGC MAVG - calculated
2/12/2015 7:32	0:27	KWPII	0.106	1.248	AGC MAVG - calculated
2/12/2015 8:03	1:11	AWE	0.948	1.627	AGC MAVG - calculated
2/12/2015 9:18	0:01	AWE	0.001	1.850	AGC MAVG - calculated
2/12/2015 9:18	0:09	AWE	0.098	2.287	AGC MAVG - calculated and Good Engineering and Operating Practices

RSWG Maui Curtailment Report February 2015



Start Date and Time	Duration	IPP Curtailed	Estimated Curtailed MWh	Peak MW Curtailed	Reasons for Curtailment
2/12/2015 7:28	0:01	AWE	0.001	1.580	AGC MAVG - calculated and Good Engineering and Operating Practices
2/12/2015 9:30	0:01	AWE	0.000	1.360	AGC MAVG - calculated and Good Engineering and Operating Practices
2/12/2015 9:35	0:01	AWE	0.000	1.360	AGC MAVG - calculated and Good Engineering and Operating Practices
2/12/2015 9:37	0:04	AWE	0.008	1.750	AGC MAVG - calculated and Good Engineering and Operating Practices
2/12/2015 9:43	0:43	AWE	0.394	1.410	AGC MAVG - calculated and Good Engineering and Operating Practices
2/12/2015 10:23	0:03	KWPH	0.008	0.187	AGC MAVG - calculated and Good Engineering and Operating Practices
2/12/2015 10:27	0:01	AWE	0.002	1.253	AGC MAVG - calculated and Good Engineering and Operating Practices
2/12/2015 10:31	0:01	AWE	0.001	1.083	AGC MAVG - calculated and Good Engineering and Operating Practices
2/12/2015 10:33	0:01	AWE	0.001	1.887	AGC MAVG - calculated and Good Engineering and Operating Practices
2/12/2015 10:35	0:01	AWE	0.001	2.057	AGC MAVG - calculated and Good Engineering and Operating Practices
2/12/2015 10:37	0:03	AWE	0.003	2.533	AGC MAVG - calculated and Good Engineering and Operating Practices
2/12/2015 10:41	0:10	AWE	0.011	2.700	AGC MAVG - calculated and Good Engineering and Operating Practices
2/12/2015 10:54	0:01	AWE	0.002	2.897	AGC MAVG - calculated and Good Engineering and Operating Practices
2/12/2015 10:58	0:02	AWE	0.003	2.853	AGC MAVG - calculated and Good Engineering and Operating Practices
2/12/2015 10:59	0:02	AWE	0.001	2.447	AGC MAVG - calculated and Good Engineering and Operating Practices
2/12/2015 11:02	0:03	AWE	0.004	2.800	AGC MAVG - calculated and Good Engineering and Operating Practices
2/12/2015 11:06	0:02	AWE	0.002	2.747	AGC MAVG - calculated and Good Engineering and Operating Practices
2/12/2015 11:09	0:01	AWE	0.002	2.800	AGC MAVG - calculated and Good Engineering and Operating Practices
2/12/2015 11:11	0:03	AWE	0.002	2.850	AGC MAVG - calculated and Good Engineering and Operating Practices
2/12/2015 11:16	0:05	AWE	0.005	3.513	AGC MAVG - calculated and Good Engineering and Operating Practices
2/12/2015 11:22	0:02	AWE	0.003	3.390	AGC MAVG - calculated and Good Engineering and Operating Practices
2/12/2015 11:25	0:12	AWE	0.010	3.527	AGC MAVG - calculated and Good Engineering and Operating Practices
2/12/2015 11:38	0:04	AWE	0.004	3.207	AGC MAVG - calculated and Good Engineering and Operating Practices
2/12/2015 11:44	0:01	AWE	0.001	2.703	AGC MAVG - calculated and Good Engineering and Operating Practices
2/12/2015 11:46	0:01	KWPH	0.000	0.068	AGC MAVG - calculated and Good Engineering and Operating Practices
2/12/2015 11:46	0:02	AWE	0.003	3.333	AGC MAVG - calculated and Good Engineering and Operating Practices
2/12/2015 11:50	0:01	AWE	0.002	2.553	AGC MAVG - calculated and Good Engineering and Operating Practices
2/12/2015 11:50	0:04	KWPH	0.003	0.135	AGC MAVG - calculated and Good Engineering and Operating Practices
2/12/2015 11:52	0:01	AWE	0.001	2.450	AGC MAVG - calculated and Good Engineering and Operating Practices
2/12/2015 11:54	0:03	AWE	0.002	2.900	AGC MAVG - calculated and Good Engineering and Operating Practices
2/12/2015 11:55	0:11	KWPH	0.015	0.289	AGC MAVG - calculated and Good Engineering and Operating Practices
2/12/2015 11:58	0:03	AWE	0.004	2.810	AGC MAVG - calculated and Good Engineering and Operating Practices
2/12/2015 12:02	0:06	AWE	0.008	2.897	AGC MAVG - calculated and Good Engineering and Operating Practices
2/12/2015 12:07	0:06	KWPH	0.027	0.469	AGC MAVG - calculated and Good Engineering and Operating Practices
2/12/2015 12:12	0:05	AWE	0.005	3.353	AGC MAVG - calculated and Good Engineering and Operating Practices
2/12/2015 12:17	0:02	KWPH	0.002	0.832	AGC MAVG - calculated and Good Engineering and Operating Practices
2/12/2015 12:18	0:09	AWE	0.008	2.580	AGC MAVG - calculated and Good Engineering and Operating Practices
2/12/2015 12:20	0:13	KWPH	0.061	0.664	AGC MAVG - calculated and Good Engineering and Operating Practices
2/12/2015 12:28	0:04	AWE	0.004	2.347	AGC MAVG - calculated and Good Engineering and Operating Practices
2/12/2015 12:33	0:03	AWE	0.003	1.950	AGC MAVG - calculated and Good Engineering and Operating Practices
2/12/2015 12:40	0:03	AWE	0.002	2.123	AGC MAVG - calculated and Good Engineering and Operating Practices
2/12/2015 12:45	0:03	AWE	0.002	1.733	AGC MAVG - calculated and Good Engineering and Operating Practices
2/12/2015 12:50	0:01	AWE	0.000	1.787	AGC MAVG - calculated and Good Engineering and Operating Practices
2/12/2015 12:52	0:06	AWE	0.008	2.287	AGC MAVG - calculated and Good Engineering and Operating Practices
2/12/2015 12:53	0:02	KWPH	0.001	0.085	AGC MAVG - calculated and Good Engineering and Operating Practices
2/12/2015 12:59	0:03	AWE	0.003	2.333	AGC MAVG - calculated and Good Engineering and Operating Practices
2/12/2015 12:59	0:11	KWPH	0.016	0.301	AGC MAVG - calculated and Good Engineering and Operating Practices
2/12/2015 13:06	0:02	AWE	0.001	1.420	AGC MAVG - calculated and Good Engineering and Operating Practices
2/12/2015 13:10	0:01	AWE	0.001	1.323	AGC MAVG - calculated and Good Engineering and Operating Practices
2/12/2015 13:11	0:03	KWPH	0.004	0.708	AGC MAVG - calculated and Good Engineering and Operating Practices
2/12/2015 13:14	0:01	AWE	0.001	1.780	AGC MAVG - calculated and Good Engineering and Operating Practices
2/12/2015 13:16	0:07	AWE	0.008	2.207	AGC MAVG - calculated and Good Engineering and Operating Practices
2/12/2015 13:16	0:06	KWPH	0.033	1.260	AGC MAVG - calculated and Good Engineering and Operating Practices
2/12/2015 13:24	0:06	AWE	0.008	2.853	AGC MAVG - calculated and Good Engineering and Operating Practices
2/12/2015 13:27	0:13	KWPH	0.034	0.481	AGC MAVG - calculated and Good Engineering and Operating Practices
2/12/2015 13:37	0:01	AWE	0.001	1.270	AGC MAVG - calculated and Good Engineering and Operating Practices
2/12/2015 13:44	0:02	AWE	0.000	1.727	AGC MAVG - calculated and Good Engineering and Operating Practices
2/12/2015 13:45	0:01	AWE	0.000	1.200	AGC MAVG - calculated and Good Engineering and Operating Practices
2/12/2015 13:51	0:17	AWE	0.171	1.567	AGC MAVG - calculated and Good Engineering and Operating Practices
2/12/2015 14:11	0:03	AWE	0.004	2.187	AGC MAVG - calculated and Good Engineering and Operating Practices
2/12/2015 14:15	0:02	AWE	0.002	1.953	AGC MAVG - calculated and Good Engineering and Operating Practices
2/12/2015 14:21	0:05	AWE	0.005	2.213	AGC MAVG - calculated and Good Engineering and Operating Practices, and Testing
2/12/2015 14:28	0:01	AWE	0.000	1.523	AGC MAVG - calculated and Good Engineering and Operating Practices, and Testing
2/12/2015 14:30	0:03	AWE	0.003	2.140	AGC MAVG - calculated and Good Engineering and Operating Practices
2/12/2015 14:34	0:01	AWE	0.002	2.420	AGC MAVG - calculated and Good Engineering and Operating Practices
2/12/2015 14:36	0:01	AWE	0.002	2.620	AGC MAVG - calculated and Good Engineering and Operating Practices
2/12/2015 14:38	0:02	AWE	0.004	2.340	AGC MAVG - calculated and Good Engineering and Operating Practices
2/12/2015 14:41	0:03	AWE	0.002	1.883	AGC MAVG - calculated and Good Engineering and Operating Practices
2/12/2015 14:45	0:01	AWE	0.001	2.070	AGC MAVG - calculated and Good Engineering and Operating Practices
2/12/2015 14:47	0:02	AWE	0.002	2.940	AGC MAVG - calculated and Good Engineering and Operating Practices
2/12/2015 14:50	0:12	AWE	0.009	2.907	AGC MAVG - calculated and Good Engineering and Operating Practices
2/12/2015 15:03	0:02	AWE	0.003	2.610	AGC MAVG - calculated and Good Engineering and Operating Practices
2/12/2015 15:06	0:05	AWE	0.003	2.440	AGC MAVG - calculated and Good Engineering and Operating Practices
2/12/2015 15:12	0:01	AWE	0.001	2.800	AGC MAVG - calculated and Good Engineering and Operating Practices
2/12/2015 15:15	0:01	AWE	0.002	2.983	AGC MAVG - calculated and Good Engineering and Operating Practices
2/12/2015 15:17	0:18	AWE	0.023	3.900	AGC MAVG - calculated and Good Engineering and Operating Practices
2/12/2015 15:34	0:03	AWE	0.003	3.710	AGC MAVG - calculated and Good Engineering and Operating Practices
2/12/2015 15:36	0:25	AWE	0.048	4.887	AGC MAVG - calculated and Good Engineering and Operating Practices
2/12/2015 16:02	0:01	KWPH	0.000	0.070	AGC MAVG - calculated and Good Engineering and Operating Practices
2/12/2015 16:04	0:11	AWE	0.002	3.733	AGC MAVG - calculated and Good Engineering and Operating Practices
2/12/2015 16:05	0:02	KWPH	0.004	0.321	AGC MAVG - calculated and Good Engineering and Operating Practices
2/12/2015 16:08	0:01	KWPH	0.002	0.506	AGC MAVG - calculated and Good Engineering and Operating Practices
2/12/2015 16:10	0:05	KWPH	0.026	0.656	AGC MAVG - calculated and Good Engineering and Operating Practices
2/12/2015 16:16	0:36	AWE	0.049	4.053	AGC MAVG - calculated and Good Engineering and Operating Practices
2/12/2015 16:28	0:02	KWPH	0.003	0.178	AGC MAVG - calculated and Good Engineering and Operating Practices
2/12/2015 16:31	0:01	KWPH	0.000	0.503	AGC MAVG - calculated and Good Engineering and Operating Practices
2/12/2015 16:35	0:01	KWPH	0.003	0.926	AGC MAVG - calculated and Good Engineering and Operating Practices
2/12/2015 16:38	0:06	KWPH	0.024	0.955	AGC MAVG - calculated and Good Engineering and Operating Practices
2/12/2015 16:52	0:04	KWPH	0.008	0.968	AGC MAVG - calculated and Good Engineering and Operating Practices
2/12/2015 16:53	0:04	AWE	0.008	4.130	AGC MAVG - calculated and Good Engineering and Operating Practices
2/12/2015 16:58	0:02	AWE	0.005	4.057	AGC MAVG - calculated and Good Engineering and Operating Practices
2/12/2015 17:03	0:26	KWPH	0.148	2.427	AGC MAVG - calculated and Good Engineering and Operating Practices
2/12/2015 17:19	0:01	AWE	0.002	3.300	AGC MAVG - calculated and Good Engineering and Operating Practices
2/12/2015 17:23	0:03	AWE	0.004	3.463	AGC MAVG - calculated and Good Engineering and Operating Practices
2/12/2015 17:27	0:02	AWE	0.002	3.053	AGC MAVG - calculated and Good Engineering and Operating Practices
2/12/2015 17:31	0:04	KWPH	0.014	1.626	AGC MAVG - calculated and Good Engineering and Operating Practices
2/12/2015 17:31	0:04	AWE	0.005	2.587	AGC MAVG - calculated and Good Engineering and Operating Practices
2/12/2015 17:37	0:04	KWPH	0.014	1.659	AGC MAVG - calculated and Good Engineering and Operating Practices
2/12/2015 17:44	0:10	KWPH	0.044	2.128	AGC MAVG - calculated and Good Engineering and Operating Practices
2/12/2015 17:52	0:02	AWE	0.003	2.490	AGC MAVG - calculated and Good Engineering and Operating Practices
2/12/2015 17:55	0:11	KWPH	0.047	1.061	AGC MAVG - calculated and Good Engineering and Operating Practices
2/12/2015 17:58	0:04	AWE	0.006	2.280	AGC MAVG - calculated and Good Engineering and Operating Practices
2/12/2015 18:03	0:04	AWE	0.004	1.973	AGC MAVG - calculated and Good Engineering and Operating Practices
2/12/2015 18:07	0:04	KWPH	0.005	1.214	AGC MAVG - calculated and Good Engineering and Operating Practices
2/12/2015 18:08	0:14	AWE	0.013	2.207	AGC MAVG - calculated and Good Engineering and Operating Practices
2/12/2015 18:13	0:08	KWPH	0.019	1.410	AGC MAVG - calculated and Good Engineering and Operating Practices
2/12/2015 18:21	1:42	KWPH	12.883	10.431	AGC MAVG - calculated and Good Engineering and Operating Practices
2/12/2015 18:23	0:02	AWE	0.003	2.813	AGC MAVG - calculated and Good Engineering and Operating Practices
2/12/2015 18:26	0:02	AWE	0.002	2.927	AGC MAVG - calculated and Good Engineering and Operating Practices
2/12/2015 18:40	0:01	AWE	0.003	3.547	AGC MAVG - calculated and Good Engineering and Operating Practices
2/12/2015 19:28	0:01	AWE	0.003	5.710	AGC MAVG - calculated
2/12/2015 21:04	0:01	AWE	0.004	1.000	AGC MAVG - calculated
2/12/2015 21:28	0:06	AWE	0.092	1.673	AGC MAVG - calculated
2/12/2015 21:39	0:01	AWE	0.004	0.803	AGC MAVG - calculated

R5WG Maui Curtailment Report February 2015



Event Date and Time	Duration	IPP Curtailed	Estimated Curtailed MW	Peak MW Curtailed	Reasons for Curtailment
2/12/2015 21:41	0:01	AWE	0.010	0.853	AGC MAVG - calculated
2/12/2015 21:43	0:01	AWE	0.004	0.820	AGC MAVG - calculated
2/13/2015 8:05	0:28	KWPII	0.748	8.848	AGC MAVG - calculated
2/13/2015 8:34	2:44	KWPII	4.533	20.319	AGC MAVG - calculated and Good Engineering and Operating Practices
2/13/2015 9:19	0:12	KWPII	0.180	20.323	AGC MAVG - calculated and Good Engineering and Operating Practices
2/13/2015 9:38	0:02	KWPII	0.011	20.452	AGC MAVG - calculated and Good Engineering and Operating Practices
2/13/2015 9:47	0:07	KWPII	0.073	20.311	AGC MAVG - calculated and Good Engineering and Operating Practices
2/13/2015 10:04	0:02	KWPII	0.002	20.338	AGC MAVG - calculated and Good Engineering and Operating Practices
2/13/2015 10:08	0:11	KWPII	0.238	20.370	AGC MAVG - calculated and Good Engineering and Operating Practices
2/13/2015 10:21	0:02	KWPII	0.013	20.373	AGC MAVG - calculated and Good Engineering and Operating Practices
2/13/2015 10:27	0:02	KWPII	0.018	20.384	AGC MAVG - calculated and Good Engineering and Operating Practices
2/13/2015 10:31	0:24	KWPII	0.513	20.389	AGC MAVG - calculated and Good Engineering and Operating Practices
2/13/2015 10:57	0:01	AWE	0.000	0.003	AGC MAVG - calculated
2/13/2015 11:04	0:03	KWPII	0.057	20.243	AGC MAVG - calculated
2/13/2015 11:09	0:08	KWPII	0.150	20.483	AGC MAVG - calculated
2/13/2015 11:18	0:15	KWPII	0.149	20.147	AGC MAVG - calculated
2/13/2015 11:36	0:04	KWPII	0.028	20.255	AGC MAVG - calculated
2/13/2015 11:42	0:07	KWPII	0.080	20.186	AGC MAVG - calculated
2/13/2015 12:08	0:01	KWPII	0.000	20.491	AGC MAVG - calculated
2/13/2015 12:34	0:03	KWPII	0.010	20.672	AGC MAVG - calculated
2/13/2015 12:40	0:43	KWPII	1.332	20.704	AGC MAVG - calculated
2/13/2015 13:25	0:33	KWPII	1.264	20.708	AGC MAVG - calculated
2/13/2015 14:01	0:08	KWPII	0.113	20.705	AGC MAVG - calculated
2/13/2015 14:16	0:04	KWPII	0.048	20.707	AGC MAVG - calculated
2/13/2015 14:16	0:03	KWPII	0.002	20.708	AGC MAVG - calculated
2/13/2015 14:19	0:06	KWPII	0.054	20.703	AGC MAVG - calculated
2/13/2015 14:28	0:02	KWPII	0.002	20.702	AGC MAVG - calculated
2/13/2015 14:38	0:02	KWPII	0.002	20.685	AGC MAVG - calculated
2/13/2015 14:42	0:02	KWPII	0.001	20.697	AGC MAVG - calculated
2/13/2015 14:48	0:02	KWPII	0.001	20.680	AGC MAVG - calculated
2/13/2015 14:57	0:03	KWPII	0.005	20.662	AGC MAVG - calculated
2/13/2015 15:12	0:01	KWPII	0.000	20.674	AGC MAVG - calculated
2/13/2015 15:20	0:07	KWPII	0.083	20.679	AGC MAVG - calculated
2/13/2015 20:42	0:02	KWPII	0.000	20.708	AGC MAVG - calculated
2/13/2015 23:54	0:27	KWPII	0.757	20.705	AGC MAVG - calculated
2/14/2015 0:29	2:59	KWPII	42.567	20.708	AGC MAVG - calculated
2/14/2015 2:52	0:00	AWE	0.184	20.383	AGC MAVG - calculated
2/14/2015 3:03	0:03	AWE	0.055	18.477	AGC MAVG - calculated
2/14/2015 3:06	0:02	AWE	0.041	18.320	AGC MAVG - calculated
2/14/2015 3:12	0:02	AWE	0.034	17.700	AGC MAVG - calculated
2/14/2015 3:15	0:01	AWE	0.005	17.767	AGC MAVG - calculated
2/14/2015 3:17	0:02	AWE	0.011	17.897	AGC MAVG - calculated
2/14/2015 3:20	0:04	AWE	0.025	18.913	AGC MAVG - calculated
2/14/2015 3:31	0:14	KWPII	4.398	20.708	AGC MAVG - calculated
2/14/2015 3:35	0:03	AWE	0.034	18.413	AGC MAVG - calculated
2/14/2015 3:40	0:01	AWE	0.020	17.667	AGC MAVG - calculated
2/14/2015 3:47	2:08	KWPII	19.351	20.708	AGC MAVG - calculated
2/14/2015 6:16	0:06	KWPII	0.082	20.708	AGC MAVG - calculated
2/14/2015 6:11	0:01	KWPII	0.005	20.708	AGC MAVG - calculated
2/14/2015 10:53	0:01	KWPII	0.001	20.708	AGC MAVG - calculated
2/14/2015 11:00	0:01	KWPII	0.001	20.708	AGC MAVG - calculated
2/14/2015 11:28	0:04	KWPII	0.001	20.708	AGC MAVG - calculated
2/14/2015 11:38	0:01	KWPII	0.008	20.708	AGC MAVG - calculated
2/14/2015 11:43	0:13	KWPII	0.011	20.708	AGC MAVG - calculated
2/14/2015 11:57	0:03	KWPII	0.002	20.708	AGC MAVG - calculated
2/14/2015 12:21	0:02	KWPII	0.001	20.708	AGC MAVG - calculated
2/14/2015 12:27	0:04	KWPII	0.002	20.708	AGC MAVG - calculated
2/14/2015 12:33	0:04	KWPII	0.002	20.708	AGC MAVG - calculated
2/14/2015 12:39	0:01	KWPII	0.000	20.708	AGC MAVG - calculated
2/14/2015 12:47	0:01	KWPII	0.002	20.708	AGC MAVG - calculated
2/14/2015 13:08	0:05	KWPII	0.075	20.708	AGC MAVG - calculated
2/14/2015 13:15	0:01	KWPII	0.000	20.708	AGC MAVG - calculated
2/14/2015 13:17	0:01	KWPII	0.000	20.708	AGC MAVG - calculated
2/14/2015 13:19	0:02	KWPII	0.001	20.708	AGC MAVG - calculated
2/14/2015 13:22	0:03	KWPII	0.001	20.708	AGC MAVG - calculated
2/14/2015 14:06	0:03	KWPII	0.003	20.708	AGC MAVG - calculated and Operating Conditions on Company's System
2/14/2015 14:13	0:01	KWPII	0.001	20.708	AGC MAVG - calculated and Operating Conditions on Company's System
2/14/2015 14:18	0:02	KWPII	0.002	20.708	AGC MAVG - calculated and Operating Conditions on Company's System
2/14/2015 14:21	0:01	KWPII	0.001	20.708	AGC MAVG - calculated and Operating Conditions on Company's System
2/14/2015 14:27	0:07	KWPII	0.004	20.708	AGC MAVG - calculated and Operating Conditions on Company's System
2/14/2015 14:44	0:01	KWPII	0.000	20.708	AGC MAVG - calculated and Operating Conditions on Company's System
2/14/2015 15:26	0:01	KWPII	0.000	20.708	AGC MAVG - calculated and Operating Conditions on Company's System
2/14/2015 15:30	0:01	KWPII	0.001	20.708	AGC MAVG - calculated and Operating Conditions on Company's System
2/14/2015 15:51	0:07	KWPII	0.128	20.432	AGC MAVG - calculated and Operating Conditions on Company's System
2/14/2015 16:34	0:08	KWPII	0.075	20.487	AGC MAVG - calculated and Operating Conditions on Company's System
2/14/2015 16:43	0:01	KWPII	0.001	18.797	AGC MAVG - calculated and Operating Conditions on Company's System
2/14/2015 16:51	0:03	KWPII	0.028	20.263	AGC MAVG - calculated and Operating Conditions on Company's System
2/14/2015 17:04	0:01	KWPII	0.002	20.620	AGC MAVG - calculated and Operating Conditions on Company's System
2/14/2015 17:10	0:01	KWPII	0.001	20.408	AGC MAVG - calculated and Operating Conditions on Company's System
2/14/2015 19:38	0:01	KWPII	0.001	20.591	AGC MAVG - calculated and Operating Conditions on Company's System
2/14/2015 20:59	0:01	KWPII	0.003	18.710	AGC MAVG - calculated
2/14/2015 21:01	0:01	KWPII	0.001	17.860	AGC MAVG - calculated
2/14/2015 21:06	0:02	KWPII	0.018	18.741	AGC MAVG - calculated
2/14/2015 21:12	0:02	KWPII	0.022	18.448	AGC MAVG - calculated
2/14/2015 21:15	0:05	KWPII	0.081	18.281	AGC MAVG - calculated
2/14/2015 21:21	0:03	KWPII	0.048	17.414	AGC MAVG - calculated
2/14/2015 21:26	0:01	KWPII	0.004	18.028	AGC MAVG - calculated
2/14/2015 21:32	0:01	KWPII	0.012	17.774	AGC MAVG - calculated
2/14/2015 21:36	0:01	KWPII	0.013	18.743	AGC MAVG - calculated
2/14/2015 21:45	0:02	KWPII	0.036	15.191	AGC MAVG - calculated
2/14/2015 21:51	0:09	KWPII	0.304	18.026	AGC MAVG - calculated
2/14/2015 22:01	0:03	KWPII	0.062	14.223	AGC MAVG - calculated
2/14/2015 22:08	0:04	KWPII	0.162	12.972	AGC MAVG - calculated
2/14/2015 22:15	0:01	KWPII	0.013	7.710	AGC MAVG - calculated
2/14/2015 22:17	0:01	KWPII	0.008	6.069	AGC MAVG - calculated
2/14/2015 22:33	0:01	KWPII	0.011	8.583	AGC MAVG - calculated
2/14/2015 22:52	0:01	KWPII	0.020	10.419	AGC MAVG - calculated
2/14/2015 23:03	0:02	KWPII	0.027	5.542	AGC MAVG - calculated
2/14/2015 23:50	2:15	AWE	1.350	20.257	AGC MAVG - calculated
2/14/2015 23:50	0:03	KWPII	0.038	1.504	AGC MAVG - calculated
2/15/2015 7:32	0:03	KWPII	0.012	0.274	AGC MAVG - calculated
2/15/2015 7:32	0:06	KWPII	0.025	0.534	AGC MAVG - calculated
2/15/2015 7:42	0:01	KWPII	0.001	0.314	AGC MAVG - calculated
2/15/2015 7:45	0:05	AWE	0.030	0.600	AGC MAVG - calculated
2/15/2015 7:47	0:02	KWPII	0.002	1.122	AGC MAVG - calculated
2/15/2015 7:56	0:06	KWPII	0.026	2.337	AGC MAVG - calculated
2/15/2015 8:06	0:01	KWPII	0.003	2.107	AGC MAVG - calculated
2/15/2015 8:10	0:04	KWPII	0.028	3.136	AGC MAVG - calculated
2/15/2015 8:15	0:04	KWPII	0.014	2.453	AGC MAVG - calculated
2/15/2015 8:20	0:01	KWPII	0.002	2.448	AGC MAVG - calculated
2/15/2015 8:26	0:01	KWPII	0.003	3.142	AGC MAVG - calculated
2/15/2015 8:31	0:03	KWPII	0.007	4.562	AGC MAVG - calculated
2/15/2015 9:31	0:01	KWPII	0.006	0.733	AGC MAVG - calculated
2/15/2015 9:37	0:01	KWPII	0.004	0.714	AGC MAVG - calculated

RSWG Maui Curtailment Report February 2015



Start Date and Time	Duration	IPP Curtailed	Estimated Curtailed MWh	Peak MW Curtailed	Reasons for Curtailment
2/15/2015 9:44	0:01	KWPII	0.012	9.146 AGC MAVG - calculated	
2/15/2015 10:03	0:03	KWPII	0.054	13.850 AGC MAVG - calculated	
2/15/2015 10:18	0:04	KWPII	0.085	14.399 AGC MAVG - calculated	
2/15/2015 10:26	0:02	KWPII	0.013	13.494 AGC MAVG - calculated	
2/15/2015 10:31	0:03	KWPII	0.038	14.667 AGC MAVG - calculated	
2/15/2015 10:39	0:03	KWPII	0.060	15.801 AGC MAVG - calculated	
2/15/2015 10:43	0:03	KWPII	0.069	14.176 AGC MAVG - calculated	
2/15/2015 10:48	0:02	KWPII	0.029	12.082 AGC MAVG - calculated	
2/15/2015 10:55	0:01	KWPII	0.010	13.586 AGC MAVG - calculated	
2/15/2015 11:03	0:02	KWPII	0.023	13.697 AGC MAVG - calculated	
2/15/2015 11:10	0:05	KWPII	0.092	15.902 AGC MAVG - calculated	
2/15/2015 11:19	0:02	KWPII	0.045	15.570 AGC MAVG - calculated	
2/15/2015 11:27	0:01	KWPII	0.008	16.141 AGC MAVG - calculated	
2/15/2015 11:33	0:09	KWPII	0.093	16.913 AGC MAVG - calculated	
2/15/2015 11:42	0:10	KWPII	0.091	16.223 AGC MAVG - calculated	
2/15/2015 11:54	0:04	KWPII	0.082	14.900 AGC MAVG - calculated	
2/15/2015 11:59	0:05	KWPII	0.084	14.244 AGC MAVG - calculated	
2/15/2015 12:05	0:01	KWPII	0.015	13.352 AGC MAVG - calculated	
2/15/2015 12:07	0:02	KWPII	0.024	13.171 AGC MAVG - calculated	
2/15/2015 12:11	0:04	KWPII	0.102	12.974 AGC MAVG - calculated	
2/15/2015 12:17	0:05	KWPII	0.092	12.574 AGC MAVG - calculated	
2/15/2015 12:31	0:04	KWPII	0.077	12.071 AGC MAVG - calculated	
2/15/2015 12:36	0:01	KWPII	0.017	10.984 AGC MAVG - calculated	
2/15/2015 12:41	0:02	KWPII	0.051	10.593 AGC MAVG - calculated	
2/15/2015 12:46	0:03	KWPII	0.053	8.810 AGC MAVG - calculated	
2/15/2015 12:53	0:01	KWPII	0.008	9.286 AGC MAVG - calculated	
2/15/2015 12:58	0:02	KWPII	0.046	8.703 AGC MAVG - calculated	
2/15/2015 13:05	0:01	KWPII	0.016	8.384 AGC MAVG - calculated	
2/15/2015 14:33	0:02	KWPII	0.001	2.904 AGC MAVG - calculated	
2/15/2015 14:35	0:05	KWPII	0.036	3.589 AGC MAVG - calculated	
2/15/2015 14:41	0:09	KWPII	0.098	3.688 AGC MAVG - calculated	
2/15/2015 14:51	0:14	KWPII	0.081	3.201 AGC MAVG - calculated	
2/15/2015 15:07	0:03	KWPII	0.034	3.335 AGC MAVG - calculated	
2/15/2015 15:13	0:03	KWPII	0.028	3.961 AGC MAVG - calculated	
2/15/2015 15:17	0:04	KWPII	0.035	4.206 AGC MAVG - calculated	
2/15/2015 15:22	0:27	KWPII	0.252	5.472 AGC MAVG - calculated	
2/15/2015 15:50	0:15	KWPII	0.184	6.668 AGC MAVG - calculated	
2/15/2015 16:05	0:01	KWPII	0.011	6.040 AGC MAVG - calculated	
2/15/2015 16:17	0:01	KWPII	0.013	7.842 AGC MAVG - calculated	
2/15/2015 16:28	0:01	KWPII	0.009	8.285 AGC MAVG - calculated	
2/15/2015 16:33	0:01	KWPII	0.008	7.989 AGC MAVG - calculated	
2/15/2015 16:56	0:01	KWPII	0.006	7.482 AGC MAVG - calculated	
2/15/2015 17:33	0:01	KWPII	0.011	6.555 AGC MAVG - calculated	
2/15/2015 19:56	0:01	KWPII	0.006	6.296 AGC MAVG - calculated	
2/15/2015 20:50	0:02	KWPII	0.018	6.885 AGC MAVG - calculated	
2/15/2015 20:57	0:35	KWPII	0.061	16.223 AGC MAVG - calculated	
2/15/2015 23:31	2:51	AWE	0.632	17.253 AGC MAVG - calculated	
2/16/2015 7:31	0:03	AWE	0.010	6.527 AGC MAVG - calculated	
2/16/2015 7:52	0:30	AWE	0.051	5.300 AGC MAVG - calculated	
2/16/2015 8:23	3:12	AWE	0.488	8.733 AGC MAVG - calculated	
2/16/2015 7:24	0:07	AWE	0.037	1.187 AGC MAVG - calculated	
2/16/2015 7:32	0:02	AWE	0.010	1.367 AGC MAVG - calculated	
2/16/2015 7:36	0:03	AWE	0.001	1.187 AGC MAVG - calculated	
2/16/2015 7:43	0:01	AWE	0.000	1.200 AGC MAVG - calculated	
2/16/2015 7:48	0:05	AWE	0.003	1.903 AGC MAVG - calculated	
2/16/2015 7:56	0:08	AWE	0.013	3.383 AGC MAVG - calculated	
2/16/2015 8:05	0:01	AWE	0.002	2.987 AGC MAVG - calculated	
2/16/2015 8:07	0:09	AWE	0.011	2.007 AGC MAVG - calculated	
2/16/2015 8:29	0:03	AWE	0.001	1.200 AGC MAVG - calculated	
2/16/2015 8:37	0:01	KWPII	0.000	0.007 AGC MAVG - calculated	
2/16/2015 8:40	0:05	AWE	0.011	1.377 AGC MAVG - calculated	
2/16/2015 8:49	0:02	AWE	0.002	1.153 AGC MAVG - calculated	
2/16/2015 8:54	0:02	AWE	0.001	1.143 AGC MAVG - calculated	
2/16/2015 8:57	0:02	AWE	0.001	1.173 AGC MAVG - calculated	
2/16/2015 9:00	0:54	AWE	0.682	1.377 AGC MAVG - calculated	
2/16/2015 9:53	0:03	KWPII	0.004	0.154 AGC MAVG - calculated	
2/16/2015 9:57	0:01	AWE	0.000	2.127 AGC MAVG - calculated	
2/16/2015 9:57	0:02	KWPII	0.003	0.173 AGC MAVG - calculated	
2/16/2015 9:58	0:06	AWE	0.006	2.836 AGC MAVG - calculated	
2/16/2015 10:07	0:01	AWE	0.001	2.773 AGC MAVG - calculated	
2/16/2015 10:19	0:01	KWPII	0.001	2.723 AGC MAVG - calculated	
2/16/2015 10:21	0:07	KWPII	0.037	3.147 AGC MAVG - calculated	
2/16/2015 10:33	0:04	KWPII	0.031	3.701 AGC MAVG - calculated	
2/16/2015 10:36	0:10	KWPII	0.057	4.446 AGC MAVG - calculated	
2/16/2015 10:49	0:38	KWPII	0.302	4.713 AGC MAVG - calculated	
2/16/2015 11:19	0:01	AWE	0.001	0.050 AGC MAVG - calculated	
2/16/2015 11:27	0:02	AWE	0.001	0.027 AGC MAVG - calculated	
2/16/2015 11:28	0:02	KWPII	0.003	1.214 AGC MAVG - calculated	
2/16/2015 11:31	0:01	AWE	0.001	0.047 AGC MAVG - calculated	
2/16/2015 11:33	0:04	KWPII	0.018	1.506 AGC MAVG - calculated	
2/16/2015 11:38	0:04	KWPII	0.018	1.269 AGC MAVG - calculated	
2/16/2015 11:38	0:03	AWE	0.003	0.100 AGC MAVG - calculated	
2/16/2015 11:39	0:01	KWPII	0.000	0.172 AGC MAVG - calculated	
2/16/2015 11:43	0:01	KWPII	0.001	0.162 AGC MAVG - calculated	
2/16/2015 11:44	0:01	KWPII	0.002	0.639 AGC MAVG - calculated	
2/16/2015 11:49	0:01	KWPII	0.003	0.037 AGC MAVG - calculated	
2/16/2015 11:54	0:01	AWE	0.001	0.050 AGC MAVG - calculated	
2/16/2015 11:55	0:01	KWPII	0.001	1.132 AGC MAVG - calculated	
2/16/2015 11:57	0:06	KWPII	0.010	1.230 AGC MAVG - calculated	
2/16/2015 11:58	0:02	AWE	0.002	0.080 AGC MAVG - calculated	
2/16/2015 12:00	0:03	KWPII	0.004	0.184 AGC MAVG - calculated	
2/16/2015 12:07	0:08	KWPII	0.044	1.232 AGC MAVG - calculated	
2/16/2015 12:06	0:17	KWPII	0.024	0.217 AGC MAVG - calculated	
2/16/2015 12:18	0:02	KWPII	0.009	0.588 AGC MAVG - calculated	
2/16/2015 12:20	0:06	KWPII	0.061	0.869 AGC MAVG - calculated	
2/16/2015 12:27	0:06	KWPII	0.011	0.172 AGC MAVG - calculated	
2/16/2015 12:35	0:02	KWPII	0.005	0.561 AGC MAVG - calculated	
2/16/2015 12:39	0:02	KWPII	0.011	0.780 AGC MAVG - calculated	
2/16/2015 12:39	0:02	KWPII	0.003	0.082 AGC MAVG - calculated	
2/16/2015 12:44	0:01	KWPII	0.000	0.960 AGC MAVG - calculated	
2/16/2015 12:47	0:01	KWPII	0.000	1.256 AGC MAVG - calculated	
2/16/2015 12:50	0:08	KWPII	0.014	1.282 AGC MAVG - calculated	
2/16/2015 12:52	0:01	AWE	0.001	0.050 AGC MAVG - calculated	
2/16/2015 12:55	1:02	AWE	0.494	1.050 AGC MAVG - calculated	
2/16/2015 13:00	0:09	KWPII	0.026	1.441 AGC MAVG - calculated	
2/16/2015 13:12	0:01	KWPII	0.004	1.055 AGC MAVG - calculated	
2/16/2015 13:14	0:05	KWPII	0.008	1.147 AGC MAVG - calculated	
2/16/2015 13:21	0:02	KWPII	0.009	0.866 AGC MAVG - calculated	
2/16/2015 13:24	0:01	KWPII	0.003	0.593 AGC MAVG - calculated	
2/16/2015 13:27	0:01	KWPII	0.003	0.573 AGC MAVG - calculated	
2/16/2015 13:28	0:01	KWPII	0.000	0.616 AGC MAVG - calculated	
2/16/2015 13:34	0:02	KWPII	0.007	0.553 AGC MAVG - calculated and Testing	
2/16/2015 13:38	0:04	KWPII	0.024	0.551 AGC MAVG - calculated and Testing	
2/16/2015 13:43	0:03	KWPII	0.004	0.231 AGC MAVG - calculated and Testing	

RSWG Maul Curtailment Report February 2015



Start Date and Time	Duration	IPP Curtained	Estimated Curtained MWh	Peak MW Curtained	Reasons for Curtailment
2/16/2015 13:58	1:07	AWE	0.407	1.377	AGC MAVG - calculated and Testing
2/16/2015 14:00	0:02	KWPII	0.001	0.075	AGC MAVG - calculated and Testing
2/16/2015 14:16	0:03	KWPII	0.000	0.207	AGC MAVG - calculated
2/16/2015 20:32	0:48	KWPII	0.469	4.670	AGC MAVG - calculated
2/16/2015 21:22	0:21	KWPII	0.180	3.187	AGC MAVG - calculated
2/16/2015 21:38	0:19	AWE	0.067	6.747	AGC MAVG - calculated
2/16/2015 21:44	0:13	KWPII	0.057	1.673	AGC MAVG - calculated
2/16/2015 21:59	0:04	KWPII	0.028	1.981	AGC MAVG - calculated
2/16/2015 22:00	0:03	AWE	0.010	6.187	AGC MAVG - calculated
2/16/2015 22:04	0:04	KWPII	0.017	2.134	AGC MAVG - calculated
2/16/2015 22:05	0:01	AWE	0.002	7.807	AGC MAVG - calculated
2/16/2015 22:10	0:03	KWPII	0.044	2.818	AGC MAVG - calculated
2/16/2015 22:15	0:03	KWPII	0.019	3.357	AGC MAVG - calculated
2/16/2015 22:20	0:04	KWPII	0.046	4.539	AGC MAVG - calculated
2/16/2015 22:26	0:06	KWPII	0.033	3.265	AGC MAVG - calculated
2/16/2015 23:58	0:01	KWPII	0.012	5.780	AGC MAVG - calculated
2/17/2015 0:49	0:02	KWPII	0.015	4.213	AGC MAVG - calculated
2/17/2015 0:54	0:01	KWPII	0.005	8.257	AGC MAVG - calculated
2/17/2015 2:20	0:07	AWE	0.024	10.480	AGC MAVG - calculated
2/17/2015 2:32	0:43	AWE	0.136	21.000	AGC MAVG - calculated
2/17/2015 6:06	0:06	AWE	0.002	1.884	AGC MAVG - calculated
2/17/2015 6:10	0:21	KWPII	0.111	21.000	AGC MAVG - calculated
2/17/2015 6:23	0:08	AWE	0.004	1.815	AGC MAVG - calculated
2/17/2015 7:12	2:43	AWE	1.815	1.874	AGC MAVG - calculated
2/17/2015 7:13	0:47	KWPII	0.207	0.040	AGC MAVG - calculated and Good Engineering and Operating Practices
2/17/2015 8:51	0:03	KWPII	0.003	0.039	AGC MAVG - calculated and Good Engineering and Operating Practices
2/17/2015 9:05	0:04	KWPII	0.001	0.407	AGC MAVG - calculated and Good Engineering and Operating Practices
2/17/2015 9:13	0:22	KWPII	0.065	0.517	AGC MAVG - calculated and Good Engineering and Operating Practices
2/17/2015 9:37	0:09	KWPII	0.051	1.067	AGC MAVG - calculated and Good Engineering and Operating Practices
2/17/2015 9:51	0:01	KWPII	0.001	1.210	AGC MAVG - calculated and Good Engineering and Operating Practices
2/17/2015 9:53	0:01	KWPII	0.002	2.923	AGC MAVG - calculated and Good Engineering and Operating Practices
2/17/2015 10:00	0:03	KWPII	0.004	4.186	AGC MAVG - calculated and Good Engineering and Operating Practices
2/17/2015 10:05	0:08	KWPII	0.033	13.349	AGC MAVG - calculated and Good Engineering and Operating Practices
2/17/2015 10:16	2:04	KWPII	2.700	3.989	AGC MAVG - calculated
2/17/2015 12:22	0:18	KWPII	0.208	3.102	AGC MAVG - calculated
2/17/2015 12:40	0:04	KWPII	0.037	2.289	AGC MAVG - calculated
2/17/2015 12:45	0:06	KWPII	0.020	2.564	AGC MAVG - calculated and Good Engineering and Operating Practices
2/17/2015 12:53	0:06	KWPII	0.040	1.957	AGC MAVG - calculated and Good Engineering and Operating Practices
2/17/2015 13:00	0:07	KWPII	0.011	1.931	AGC MAVG - calculated and Good Engineering and Operating Practices
2/17/2015 13:03	0:23	KWPII	0.104	8.207	AGC MAVG - calculated and Good Engineering and Operating Practices
2/17/2015 13:06	0:49	AWE	0.163	0.156	AGC MAVG - calculated and Good Engineering and Operating Practices
2/17/2015 13:28	0:01	KWPII	0.000	0.359	AGC MAVG - calculated and Good Engineering and Operating Practices
2/17/2015 13:32	0:09	KWPII	0.023	3.780	AGC MAVG - calculated and Good Engineering and Operating Practices
2/17/2015 13:56	0:03	AWE	0.006	3.440	AGC MAVG - calculated and Good Engineering and Operating Practices
2/17/2015 14:00	0:15	AWE	0.019	2.913	AGC MAVG - calculated and Good Engineering and Operating Practices
2/17/2015 14:16	0:01	AWE	0.002	3.650	AGC MAVG - calculated and Good Engineering and Operating Practices
2/17/2015 14:18	0:07	AWE	0.009	4.837	AGC MAVG - calculated and Good Engineering and Operating Practices
2/17/2015 14:27	0:11	AWE	0.022	2.890	AGC MAVG - calculated and Good Engineering and Operating Practices
2/17/2015 14:40	0:01	AWE	0.002	5.700	AGC MAVG - calculated and Good Engineering and Operating Practices
2/17/2015 14:43	0:35	AWE	0.079	4.620	AGC MAVG - calculated
2/17/2015 17:02	0:30	AWE	0.051	3.681	AGC MAVG - calculated
2/17/2015 17:33	0:33	AWE	0.138	0.000	AGC MAVG - calculated
2/17/2015 18:00	0:01	AWE	0.001	2.517	AGC MAVG - calculated
2/17/2015 18:09	0:01	AWE	0.002	1.677	AGC MAVG - calculated
2/17/2015 18:11	0:21	AWE	0.277	0.510	AGC MAVG - calculated
2/17/2015 18:36	0:05	AWE	0.019	0.050	AGC MAVG - calculated
2/17/2015 20:11	0:04	AWE	0.002	1.297	AGC MAVG - calculated
2/17/2015 20:21	0:14	AWE	0.083	0.800	AGC MAVG - calculated
2/17/2015 20:38	0:05	AWE	0.023	1.750	AGC MAVG - calculated
2/17/2015 20:45	0:02	AWE	0.001	1.787	AGC MAVG - calculated
2/17/2015 20:48	0:01	AWE	0.001	2.000	AGC MAVG - calculated
2/17/2015 20:50	0:05	AWE	0.004	1.800	AGC MAVG - calculated
2/17/2015 20:56	0:01	AWE	0.000	1.847	AGC MAVG - calculated
2/17/2015 20:58	0:01	AWE	0.001	1.680	AGC MAVG - calculated
2/17/2015 21:00	0:01	AWE	0.001	1.600	AGC MAVG - calculated
2/17/2015 21:04	0:01	AWE	0.000	2.253	AGC MAVG - calculated
2/17/2015 21:07	0:06	AWE	0.006	2.480	AGC MAVG - calculated
2/17/2015 21:14	0:02	AWE	0.001	3.073	AGC MAVG - calculated
2/17/2015 21:17	0:03	AWE	0.003	7.577	AGC MAVG - calculated
2/17/2015 21:21	0:27	AWE	0.050	5.503	AGC MAVG - calculated
2/17/2015 23:02	0:04	AWE	0.011	6.343	AGC MAVG - calculated
2/17/2015 23:10	0:15	AWE	0.032	0.256	AGC MAVG - calculated
2/17/2015 23:12	0:06	KWPII	0.005	2.483	AGC MAVG - calculated
2/17/2015 23:26	0:03	AWE	0.003	2.870	AGC MAVG - calculated
2/17/2015 23:30	0:03	AWE	0.001	7.023	AGC MAVG - calculated
2/17/2015 23:34	0:39	AWE	0.081	8.107	AGC MAVG - calculated
2/18/2015 1:24	0:05	AWE	0.012	21.000	AGC MAVG - calculated
2/18/2015 2:11	0:56	AWE	0.435	26.843	AGC MAVG - calculated
2/18/2015 3:33	0:22	AWE	0.129	21.000	AGC MAVG - calculated
2/18/2015 4:01	0:25	AWE	0.043	21.000	AGC MAVG - calculated
2/18/2015 6:27	0:03	AWE	0.006	5.599	AGC MAVG - calculated
2/18/2015 6:29	0:39	KWPII	0.387	21.000	AGC MAVG - calculated
2/18/2015 6:48	0:43	AWE	0.278	0.116	AGC MAVG - calculated
2/18/2015 7:11	0:05	KWPII	0.000	0.647	AGC MAVG - calculated and Good Engineering and Operating Practices
2/18/2015 7:20	0:04	KWPII	0.019	1.161	AGC MAVG - calculated and Good Engineering and Operating Practices
2/18/2015 7:29	0:02	KWPII	0.003	0.323	AGC MAVG - calculated, Good Engineering and Operating Practices, and Testing
2/18/2015 8:05	0:08	KWPII	0.035	9.047	AGC MAVG - calculated, Good Engineering and Operating Practices, and Testing
2/18/2015 8:05	0:08	AWE	0.035	9.000	AGC MAVG - calculated, Good Engineering and Operating Practices, and Testing
2/18/2015 8:19	0:18	AWE	0.063	8.677	AGC MAVG - calculated, Good Engineering and Operating Practices, and Testing
2/18/2015 8:37	0:15	AWE	0.052	8.333	AGC MAVG - calculated, Good Engineering and Operating Practices, and Testing
2/18/2015 8:54	0:08	AWE	0.018	11.700	AGC MAVG - calculated, Good Engineering and Operating Practices, and Testing
2/18/2015 9:03	0:10	AWE	0.037	12.617	AGC MAVG - calculated, Good Engineering and Operating Practices, and Testing
2/18/2015 9:18	0:24	AWE	0.116	8.073	AGC MAVG - calculated
2/18/2015 14:14	0:35	AWE	0.078	0.039	AGC MAVG - calculated
2/18/2015 14:41	0:04	KWPII	0.002	0.024	AGC MAVG - calculated
2/18/2015 14:48	0:01	KWPII	0.000	0.300	AGC MAVG - calculated
2/18/2015 14:51	0:02	KWPII	0.004	5.280	AGC MAVG - calculated
2/18/2015 14:54	0:07	AWE	0.020	0.381	AGC MAVG - calculated
2/18/2015 14:54	0:01	KWPII	0.003	0.485	AGC MAVG - calculated
2/18/2015 14:57	0:01	KWPII	0.001	0.369	AGC MAVG - calculated and Good Engineering and Operating Practices
2/18/2015 17:36	0:24	KWPII	0.104	5.810	AGC MAVG - calculated and Good Engineering and Operating Practices
2/18/2015 17:38	0:54	AWE	0.061	11.587	AGC MAVG - calculated
2/18/2015 19:45	0:54	AWE	0.210	8.950	AGC MAVG - calculated
2/18/2015 20:51	0:22	AWE	0.073	11.257	AGC MAVG - calculated
2/18/2015 21:21	0:12	AWE	0.060	9.650	AGC MAVG - calculated
2/18/2015 21:45	0:05	AWE	0.022	9.830	AGC MAVG - calculated
2/18/2015 22:40	0:03	AWE	0.016	9.847	AGC MAVG - calculated
2/18/2015 23:21	0:16	AWE	0.070	12.903	AGC MAVG - calculated
2/18/2015 23:45	0:30	AWE	0.142	8.220	AGC MAVG - calculated
2/18/2015 0:21	0:05	AWE	0.018	9.387	AGC MAVG - calculated
2/18/2015 1:02	0:09	AWE	0.038	15.673	AGC MAVG - calculated
2/18/2015 1:20	1:21	AWE	0.474	0.758	AGC MAVG - calculated
2/18/2015 2:30	0:02	KWPII	0.003		

RSWG Maui Curtailment Report February 2015



Start Date and Time	Duration	IPP Curtailed	Estimated Curtailed MW	Peak MW Curtailed	AGC MAVG - calculated	Reasons for Curtailment
2/18/2015 2:42	0:47	KWPII	2:058	15:849	AGC MAVG - calculated	
2/18/2015 2:45	0:06	AWE	0:178	19:450	AGC MAVG - calculated	
2/18/2015 3:31	1:07	KWPII	0:871	6:807	AGC MAVG - calculated	
2/18/2015 4:29	1:03	AWE	0:187	8:930	AGC MAVG - calculated	
2/18/2015 5:33	0:24	AWE	0:031	4:727	AGC MAVG - calculated	
2/18/2015 5:56	0:02	AWE	0:002	2:827	AGC MAVG - calculated	
2/18/2015 6:01	0:07	AWE	0:006	2:630	AGC MAVG - calculated	
2/18/2015 6:09	0:03	AWE	0:001	1:823	AGC MAVG - calculated	
2/18/2015 6:13	0:01	AWE	0:001	1:700	AGC MAVG - calculated	
2/18/2015 6:17	0:01	AWE	0:001	1:550	AGC MAVG - calculated	
2/18/2015 6:23	0:01	AWE	0:000	2:020	AGC MAVG - calculated	
2/18/2015 6:25	0:04	AWE	0:005	2:237	AGC MAVG - calculated	
2/18/2015 6:30	0:08	AWE	0:004	1:993	AGC MAVG - calculated and Good Engineering and Operating Practices	
2/18/2015 6:39	0:01	AWE	0:000	1:387	AGC MAVG - calculated and Good Engineering and Operating Practices	
2/18/2015 6:42	0:01	AWE	0:001	1:447	AGC MAVG - calculated and Good Engineering and Operating Practices	
2/18/2015 6:54	0:01	AWE	0:001	1:600	AGC MAVG - calculated and Good Engineering and Operating Practices	
2/18/2015 6:58	0:03	AWE	0:001	1:313	AGC MAVG - calculated and Good Engineering and Operating Practices	
2/18/2015 7:00	0:17	AWE	0:178	1:480	AGC MAVG - calculated and Good Engineering and Operating Practices	
2/18/2015 9:14	0:22	KWPII	0:527	9:598	AGC MAVG - calculated, Good Engineering and Operating Practices, and Testing	
2/18/2015 9:38	0:01	KWPII	0:014	7:254	AGC MAVG - calculated, Good Engineering and Operating Practices, and Testing	
2/18/2015 9:45	0:03	KWPII	0:030	8:004	AGC MAVG - calculated, Good Engineering and Operating Practices, and Testing	
2/18/2015 9:58	0:01	KWPII	0:020	10:546	AGC MAVG - calculated, Good Engineering and Operating Practices, and Testing	
2/18/2015 9:59	0:01	KWPII	0:002	10:500	AGC MAVG - calculated, Good Engineering and Operating Practices, and Testing	
2/18/2015 10:09	0:03	KWPII	0:048	11:899	AGC MAVG - calculated, Good Engineering and Operating Practices, and Testing	
2/18/2015 10:13	0:01	KWPII	0:022	11:850	AGC MAVG - calculated, Good Engineering and Operating Practices, and Testing	
2/18/2015 10:27	0:03	KWPII	0:050	14:817	AGC MAVG - calculated, Good Engineering and Operating Practices, and Testing	
2/18/2015 10:32	0:02	KWPII	0:032	15:059	AGC MAVG - calculated, Good Engineering and Operating Practices, and Testing	
2/18/2015 10:33	0:12	KWPII	0:200	15:248	AGC MAVG - calculated, Good Engineering and Operating Practices, and Testing	
2/18/2015 10:50	0:01	KWPII	0:028	15:213	AGC MAVG - calculated, Good Engineering and Operating Practices, and Testing	
2/18/2015 10:52	0:38	KWPII	1:583	18:212	AGC MAVG - calculated, Good Engineering and Operating Practices, and Testing	
2/18/2015 11:31	0:01	KWPII	0:008	15:390	AGC MAVG - calculated, Good Engineering and Operating Practices, and Testing	
2/18/2015 11:34	0:01	KWPII	0:020	15:614	AGC MAVG - calculated, Good Engineering and Operating Practices, and Testing	
2/18/2015 11:38	0:01	KWPII	0:017	14:228	AGC MAVG - calculated, Good Engineering and Operating Practices, and Testing	
2/18/2015 11:41	0:02	KWPII	0:038	14:270	AGC MAVG - calculated, Good Engineering and Operating Practices, and Testing	
2/18/2015 11:44	0:03	KWPII	0:051	14:782	AGC MAVG - calculated, Good Engineering and Operating Practices, and Testing	
2/18/2015 11:48	0:01	KWPII	0:007	14:576	AGC MAVG - calculated, Good Engineering and Operating Practices, and Testing	
2/18/2015 11:57	0:02	KWPII	0:102	12:660	AGC MAVG - calculated, Good Engineering and Operating Practices, and Testing	
2/18/2015 12:01	0:06	KWPII	0:113	13:258	AGC MAVG - calculated, Good Engineering and Operating Practices, and Testing	
2/18/2015 12:07	0:04	KWPII	0:122	12:208	AGC MAVG - calculated, Good Engineering and Operating Practices, and Testing	
2/18/2015 12:13	0:07	KWPII	0:151	13:898	AGC MAVG - calculated, Good Engineering and Operating Practices, and Testing	
2/18/2015 12:22	0:03	KWPII	0:077	11:441	AGC MAVG - calculated, Good Engineering and Operating Practices, and Testing	
2/18/2015 12:26	0:03	KWPII	0:065	10:338	AGC MAVG - calculated, Good Engineering and Operating Practices, and Testing	
2/18/2015 12:33	0:02	KWPII	0:051	12:140	AGC MAVG - calculated, Good Engineering and Operating Practices, and Testing	
2/18/2015 12:36	0:04	KWPII	0:089	12:386	AGC MAVG - calculated, Good Engineering and Operating Practices, and Testing	
2/18/2015 12:44	0:14	KWPII	0:337	13:884	AGC MAVG - calculated, Good Engineering and Operating Practices, and Testing	
2/18/2015 13:00	0:38	KWPII	1:219	17:420	AGC MAVG - calculated, Good Engineering and Operating Practices, and Testing	
2/18/2015 13:39	0:04	KWPII	0:138	15:833	AGC MAVG - calculated and Good Engineering and Operating Practices	
2/18/2015 13:44	0:25	KWPII	0:722	15:648	AGC MAVG - calculated and Good Engineering and Operating Practices	
2/18/2015 14:10	0:03	KWPII	0:084	14:771	AGC MAVG - calculated and Good Engineering and Operating Practices	
2/18/2015 14:15	0:02	KWPII	0:084	15:230	AGC MAVG - calculated and Good Engineering and Operating Practices	
2/18/2015 14:18	1:20	KWPII	2:842	17:064	AGC MAVG - calculated and Good Engineering and Operating Practices	
2/18/2015 15:45	0:25	KWPII	0:718	19:127	AGC MAVG - calculated and Good Engineering and Operating Practices	
2/18/2015 15:52	0:03	KWPII	0:028	19:214	AGC MAVG - calculated and Good Engineering and Operating Practices	
2/18/2015 16:16	0:01	KWPII	0:007	19:136	AGC MAVG - calculated and Good Engineering and Operating Practices	
2/18/2015 16:18	0:05	KWPII	0:085	19:308	AGC MAVG - calculated and Good Engineering and Operating Practices	
2/18/2015 16:24	0:37	KWPII	0:888	19:318	AGC MAVG - calculated and Good Engineering and Operating Practices	
2/18/2015 17:02	17:33	KWPII	30:821	18:812	AGC MAVG - calculated and Good Engineering and Operating Practices	
2/20/2015 5:12	0:01	AWE	0:000	0:010	AGC MAVG - calculated	
2/20/2015 6:55	0:01	KWP	0:003	2:570	AGC MAVG - calculated	
2/20/2015 7:01	0:01	KWP	0:005	3:584	AGC MAVG - calculated	
2/20/2015 10:36	0:13	KWPII	0:070	2:771	AGC MAVG - calculated and Good Engineering and Operating Practices	
2/20/2015 10:50	0:17	KWPII	0:080	2:251	AGC MAVG - calculated	
2/20/2015 11:07	0:01	AWE	0:004	5:200	AGC MAVG - calculated	
2/20/2015 11:08	0:01	KWPII	0:004	1:881	AGC MAVG - calculated	
2/20/2015 11:12	0:06	KWPII	0:028	2:330	AGC MAVG - calculated	
2/20/2015 11:21	0:04	KWPII	0:027	2:415	AGC MAVG - calculated	
2/20/2015 11:28	0:01	KWPII	0:002	1:893	AGC MAVG - calculated	
2/20/2015 11:39	0:23	KWPII	0:088	2:288	AGC MAVG - calculated	
2/20/2015 11:49	2:48	AWE	0:650	13:290	AGC MAVG - calculated	
2/20/2015 11:53	0:15	KWPII	0:068	1:137	AGC MAVG - calculated	
2/20/2015 12:12	0:01	KWPII	0:005	0:068	AGC MAVG - calculated	
2/20/2015 12:14	0:01	KWPII	0:007	0:918	AGC MAVG - calculated	
2/20/2015 12:16	0:01	KWPII	0:002	0:782	AGC MAVG - calculated	
2/20/2015 12:18	0:02	KWPII	0:010	0:680	AGC MAVG - calculated	
2/20/2015 12:21	0:02	KWPII	0:012	0:481	AGC MAVG - calculated	
2/20/2015 12:24	0:01	KWPII	0:005	0:495	AGC MAVG - calculated	
2/20/2015 12:28	0:02	KWPII	0:013	0:548	AGC MAVG - calculated	
2/20/2015 12:31	0:01	KWPII	0:003	0:242	AGC MAVG - calculated	
2/20/2015 13:05	0:02	KWPII	0:001	0:243	AGC MAVG - calculated	
2/20/2015 13:08	0:03	KWPII	0:011	0:887	AGC MAVG - calculated	
2/20/2015 13:14	0:05	KWPII	0:042	1:581	AGC MAVG - calculated	
2/20/2015 13:21	0:08	KWPII	0:041	1:150	AGC MAVG - calculated	
2/20/2015 13:31	0:06	KWPII	0:028	1:504	AGC MAVG - calculated	
2/20/2015 13:38	0:12	KWPII	0:048	1:182	AGC MAVG - calculated	
2/20/2015 14:16	0:14	KWPII	0:040	0:362	AGC MAVG - calculated	
2/20/2015 14:35	0:03	KWPII	0:019	1:308	AGC MAVG - calculated	
2/20/2015 14:36	0:26	AWE	0:136	15:427	AGC MAVG - calculated	
2/20/2015 14:39	0:15	KWPII	0:055	1:301	AGC MAVG - calculated	
2/20/2015 14:57	0:01	KWPII	0:001	0:780	AGC MAVG - calculated	
2/20/2015 15:01	0:01	KWPII	0:001	0:783	AGC MAVG - calculated	
2/20/2015 15:14	0:29	KWPII	0:148	2:180	AGC MAVG - calculated	
2/20/2015 15:15	0:14	AWE	0:069	13:183	AGC MAVG - calculated	
2/20/2015 15:30	0:03	AWE	0:014	11:213	AGC MAVG - calculated	
2/20/2015 15:34	0:18	AWE	0:076	8:973	AGC MAVG - calculated	
2/20/2015 15:44	0:02	KWPII	0:002	1:078	AGC MAVG - calculated	
2/20/2015 15:47	0:23	KWPII	0:100	1:051	AGC MAVG - calculated	
2/20/2015 15:58	0:01	AWE	0:002	5:857	AGC MAVG - calculated	
2/20/2015 16:03	0:05	AWE	0:013	5:093	AGC MAVG - calculated	
2/20/2015 16:32	0:05	KWPII	0:027	2:812	AGC MAVG - calculated	
2/20/2015 16:39	0:48	KWPII	0:401	3:378	AGC MAVG - calculated	
2/20/2015 16:58	0:11	AWE	0:040	3:563	AGC MAVG - calculated	
2/20/2015 17:26	0:01	AWE	0:003	0:373	AGC MAVG - calculated	
2/20/2015 17:28	0:05	AWE	0:031	1:500	AGC MAVG - calculated	
2/20/2015 17:28	0:23	KWPII	0:185	0:718	AGC MAVG - calculated	
2/20/2015 17:35	0:01	AWE	0:000	1:500	AGC MAVG - calculated	
2/20/2015 17:36	0:04	AWE	0:004	2:080	AGC MAVG - calculated	
2/20/2015 17:43	0:06	AWE	0:033	1:473	AGC MAVG - calculated	
2/20/2015 17:48	0:01	AWE	0:001	1:550	AGC MAVG - calculated	
2/20/2015 17:52	0:02	AWE	0:000	1:437	AGC MAVG - calculated	
2/20/2015 17:52	0:06	KWPII	0:050	0:776	AGC MAVG - calculated	
2/20/2015 17:54	0:01	AWE	0:000	1:183	AGC MAVG - calculated	
2/20/2015 17:58	0:10	AWE	0:081	1:597	AGC MAVG - calculated	
2/20/2015 18:05	0:10	KWPII	0:034	0:597	AGC MAVG - calculated	
2/20/2015 18:16	0:18	KWPII	0:058	2:203	AGC MAVG - calculated	

RSWG Maui Curtailment Report February 2015



Start Date and Time	Duration	IPP Curtailed	Estimated Curtailed MAWH	Peak MW Curtailed	Reasons for Curtailment
2/20/2015 18:18	0:02	AWE	0.001	0.100	AGC MAVG - calculated
2/20/2015 20:14	0:06	KWPHI	0.009	0.148	AGC MAVG - calculated
2/20/2015 20:34	0:03	KWPHI	0.006	0.285	AGC MAVG - calculated
2/20/2015 20:39	0:03	KWPHI	0.008	0.065	AGC MAVG - calculated
2/20/2015 20:43	0:01	KWPHI	0.001	0.832	AGC MAVG - calculated
2/20/2015 20:45	0:25	KWPHI	0.130	1.172	AGC MAVG - calculated
2/20/2015 21:11	0:24	KWPHI	0.108	0.750	AGC MAVG - calculated
2/20/2015 21:43	0:05	KWPHI	0.020	0.553	AGC MAVG - calculated
2/20/2015 21:49	5:58	KWPHI	7.570	14.838	AGC MAVG - calculated
2/21/2015 3:48	0:08	KWPHI	0.128	14.367	AGC MAVG - calculated
2/21/2015 3:56	4:33	KWPHI	7.277	18.474	AGC MAVG - calculated
2/21/2015 8:35	0:01	KWPHI	0.010	10.294	AGC MAVG - calculated
2/21/2015 8:38	0:03	KWPHI	0.043	15.842	AGC MAVG - calculated
2/21/2015 8:58	0:01	KWPHI	0.017	16.061	AGC MAVG - calculated
2/21/2015 9:04	0:01	KWPHI	0.002	14.582	AGC MAVG - calculated
2/21/2015 9:08	0:03	KWPHI	0.038	13.675	AGC MAVG - calculated
2/21/2015 9:18	0:01	KWPHI	0.012	13.163	AGC MAVG - calculated
2/21/2015 9:21	0:02	KWPHI	0.023	13.344	AGC MAVG - calculated
2/21/2015 9:33	0:02	KWPHI	0.011	13.112	AGC MAVG - calculated
2/21/2015 9:36	0:03	KWPHI	0.037	12.677	AGC MAVG - calculated
2/21/2015 9:56	0:02	KWPHI	0.023	15.589	AGC MAVG - calculated
2/21/2015 10:11	0:01	KWPHI	0.008	14.550	AGC MAVG - calculated
2/21/2015 10:26	0:02	KWPHI	0.018	15.571	AGC MAVG - calculated
2/21/2015 10:35	0:03	KWPHI	0.030	16.639	AGC MAVG - calculated
2/21/2015 10:39	0:03	KWPHI	0.036	17.530	AGC MAVG - calculated
2/21/2015 10:54	0:02	KWPHI	0.033	17.498	AGC MAVG - calculated
2/21/2015 10:57	0:02	KWPHI	0.045	17.036	AGC MAVG - calculated
2/21/2015 11:01	0:02	KWPHI	0.023	15.002	AGC MAVG - calculated
2/21/2015 11:07	0:05	KWPHI	0.090	14.421	AGC MAVG - calculated
2/21/2015 11:13	0:04	KWPHI	0.057	13.361	AGC MAVG - calculated
2/21/2015 11:29	0:01	KWPHI	0.004	13.727	AGC MAVG - calculated
2/21/2015 11:31	0:01	KWPHI	0.007	13.821	AGC MAVG - calculated
2/21/2015 11:33	0:01	KWPHI	0.013	13.181	AGC MAVG - calculated
2/21/2015 11:41	0:01	KWPHI	0.008	13.659	AGC MAVG - calculated
2/21/2015 11:52	0:05	KWPHI	0.080	14.323	AGC MAVG - calculated
2/21/2015 12:00	0:01	KWPHI	0.007	14.337	AGC MAVG - calculated
2/21/2015 12:02	0:01	KWPHI	0.009	14.611	AGC MAVG - calculated
2/21/2015 12:05	0:03	KWPHI	0.073	13.920	AGC MAVG - calculated
2/21/2015 12:13	0:02	KWPHI	0.024	13.751	AGC MAVG - calculated
2/21/2015 12:21	0:02	KWPHI	0.029	15.094	AGC MAVG - calculated
2/21/2015 12:29	0:01	KWPHI	0.014	15.860	AGC MAVG - calculated
2/21/2015 12:54	0:02	KWPHI	0.030	16.399	AGC MAVG - calculated
2/21/2015 13:00	0:03	KWPHI	0.044	16.748	AGC MAVG - calculated
2/21/2015 13:04	0:01	KWPHI	0.004	16.058	AGC MAVG - calculated
2/21/2015 13:10	0:02	KWPHI	0.020	16.734	AGC MAVG - calculated
2/21/2015 13:30	0:04	KWPHI	0.057	16.804	AGC MAVG - calculated
2/21/2015 13:36	0:01	KWPHI	0.018	15.506	AGC MAVG - calculated
2/21/2015 13:51	0:01	KWPHI	0.007	16.757	AGC MAVG - calculated
2/21/2015 13:53	3:57	KWPHI	5.552	17.184	AGC MAVG - calculated
2/21/2015 17:51	0:05	KWPHI	0.066	14.253	AGC MAVG - calculated
2/21/2015 17:58	0:08	KWPHI	0.284	14.588	AGC MAVG - calculated
2/21/2015 18:10	0:16	KWPHI	0.420	14.371	AGC MAVG - calculated
2/21/2015 18:30	0:08	KWPHI	0.132	15.293	AGC MAVG - calculated
2/21/2015 18:40	0:02	KWPHI	0.049	14.489	AGC MAVG - calculated
2/21/2015 18:43	0:22	KWPHI	0.502	17.288	AGC MAVG - calculated
2/21/2015 19:06	0:27	KWPHI	0.818	18.899	AGC MAVG - calculated
2/21/2015 19:35	3:06	KWPHI	5.554	19.492	AGC MAVG - calculated
2/21/2015 22:44	3:32	KWPHI	8.105	19.372	AGC MAVG - calculated
2/22/2015 2:19	0:06	KWPHI	0.174	8.168	AGC MAVG - calculated
2/22/2015 2:29	0:15	KWPHI	0.222	6.906	AGC MAVG - calculated
2/22/2015 2:47	0:02	KWPHI	0.016	1.681	AGC MAVG - calculated
2/22/2015 2:54	0:02	KWPHI	0.022	3.871	AGC MAVG - calculated
2/22/2015 2:58	1:17	KWPHI	1.497	18.577	AGC MAVG - calculated
2/22/2015 4:17	1:30	KWPHI	2.433	18.383	AGC MAVG - calculated
2/22/2015 5:02	0:01	KWPHI	0.012	14.762	AGC MAVG - calculated
2/22/2015 5:56	0:01	KWPHI	0.011	12.922	AGC MAVG - calculated
2/22/2015 6:49	0:07	KWPHI	0.198	12.143	AGC MAVG - calculated
2/22/2015 7:07	4:18	AWE	1.837	21.000	AGC MAVG - calculated
2/22/2015 9:11	0:04	KWPHI	0.005	0.118	AGC MAVG - calculated
2/22/2015 9:24	0:03	KWPHI	0.002	0.072	AGC MAVG - calculated
2/22/2015 9:31	0:02	KWPHI	0.012	0.482	AGC MAVG - calculated
2/22/2015 9:35	0:06	KWPHI	0.019	0.493	AGC MAVG - calculated
2/22/2015 12:26	0:37	AWE	0.102	21.000	AGC MAVG - calculated
2/22/2015 12:41	0:04	KWPHI	0.005	0.106	AGC MAVG - calculated
2/22/2015 12:54	0:01	KWPHI	0.001	0.063	AGC MAVG - calculated
2/22/2015 13:06	0:27	AWE	0.092	21.000	AGC MAVG - calculated
2/22/2015 13:36	0:03	AWE	0.014	21.000	AGC MAVG - calculated
2/22/2015 13:48	0:33	AWE	0.154	21.000	AGC MAVG - calculated
2/22/2015 14:24	0:02	AWE	0.028	21.000	AGC MAVG - calculated
2/22/2015 14:37	0:05	AWE	0.013	21.000	AGC MAVG - calculated
2/22/2015 14:38	0:04	AWE	0.010	21.000	AGC MAVG - calculated
2/22/2015 20:53	0:15	AWE	0.068	15.997	AGC MAVG - calculated
2/22/2015 22:10	0:58	AWE	0.198	8.653	AGC MAVG - calculated
2/23/2015 1:27	0:51	KWPHI	7.075	15.774	AGC MAVG - calculated AGC MAVG - entered, AGC MAVG - entered - Maintaining Regulating Reserves and AGC MAVG -
2/23/2015 1:50	0:19	AWE	0.090	14.150	AGC MAVG - calculated AGC MAVG - entered, and AGC MAVG - entered - Maintaining Regulating Reserves
2/23/2015 2:27	0:06	KWPHI	0.174	14.742	AGC MAVG - calculated
2/23/2015 2:36	0:06	KWPHI	0.228	14.727	AGC MAVG - calculated
2/23/2015 2:45	0:08	KWPHI	0.149	11.737	AGC MAVG - calculated
2/23/2015 2:59	0:02	KWPHI	0.026	10.241	AGC MAVG - calculated
2/23/2015 3:16	0:03	KWPHI	0.045	12.973	AGC MAVG - calculated
2/23/2015 4:51	0:23	KWPHI	0.204	4.488	AGC MAVG - calculated
2/23/2015 5:15	0:01	KWPHI	0.005	1.845	AGC MAVG - calculated
2/23/2015 5:17	0:03	AWE	0.010	0.347	AGC MAVG - calculated
2/23/2015 5:17	0:06	KWPHI	0.017	1.718	AGC MAVG - calculated
2/23/2015 5:21	0:02	AWE	0.008	8.453	AGC MAVG - calculated
2/23/2015 5:24	0:04	AWE	0.016	9.810	AGC MAVG - calculated
2/23/2015 5:25	0:03	KWPHI	0.006	1.072	AGC MAVG - calculated
2/23/2015 5:30	0:01	AWE	0.004	6.757	AGC MAVG - calculated
2/23/2015 5:31	0:02	KWPHI	0.005	1.437	AGC MAVG - calculated
2/23/2015 5:32	0:01	AWE	0.004	8.877	AGC MAVG - calculated
2/23/2015 5:35	0:02	KWPHI	0.000	1.827	AGC MAVG - calculated
2/23/2015 5:38	0:09	KWPHI	0.071	2.540	AGC MAVG - calculated
2/23/2015 5:45	0:02	AWE	0.011	11.270	AGC MAVG - calculated
2/23/2015 5:50	2:58	AWE	1.055	21.000	AGC MAVG - calculated and Testing
2/23/2015 5:51	0:06	KWPHI	0.034	0.752	AGC MAVG - calculated
2/23/2015 6:40	0:02	KWPHI	0.002	0.114	AGC MAVG - calculated and Testing
2/23/2015 6:48	0:01	AWE	0.006	14.863	AGC MAVG - calculated and Testing
2/23/2015 6:48	0:03	KWPHI	0.018	2.256	AGC MAVG - calculated and Testing
2/23/2015 6:53	0:06	KWPHI	0.020	2.489	AGC MAVG - calculated and Testing
2/23/2015 9:01	0:01	KWPHI	0.000	2.944	AGC MAVG - calculated and Testing
2/23/2015 9:10	0:15	KWPHI	0.700	6.065	AGC MAVG - calculated and Testing
2/23/2015 9:26	0:06	KWPHI	0.133	5.560	AGC MAVG - calculated and Testing
2/23/2015 9:39	0:06	KWPHI	0.082	4.241	AGC MAVG - calculated and Testing

RSWG Maui Curtailment Report February 2015



Start Date and Time	Duration	APP Curtailed	Estimated Curtailed MWh	Peak MW Curtailed	Reasons for Curtailment
2/25/2015 0:50	1:23	KWPH	16 769	16 869	AGC MAVG - calculated, AGC MAVG - entered, AGC MAVG - entered - Excess Energy, AGC MAVG - calculated, AGC MAVG - entered - Excess Energy, AGC MAVG - calculated, AGC MAVG - entered - Excess Energy, and AGC MAVG - calculated
2/25/2015 1:01	0:46	AWE	5 272	20 943	AGC MAVG - entered - Excess Energy, AGC MAVG - calculated, AGC MAVG - entered - Excess Energy, AGC MAVG - calculated, AGC MAVG - entered - Excess Energy, AGC MAVG - calculated, AGC MAVG - entered - Excess Energy, and AGC MAVG - calculated
2/25/2015 1:51	0:05	AWE	0 133	8 307	AGC MAVG - entered - Excess Energy
2/25/2015 3:06	3:07	KWPH	46 569	18 036	AGC MAVG - calculated, AGC MAVG - entered, AGC MAVG - entered - Excess Energy, AGC MAVG - calculated, Testing, AGC MAVG - calculated, AGC MAVG - entered, and AGC MAVG - calculated
2/25/2015 3:17	0:03	AWE	0 139	10 597	AGC MAVG - entered - Excess Energy
2/25/2015 3:26	0:01	AWE	0 051	4 647	AGC MAVG - entered - Excess Energy
2/25/2015 3:33	0:43	MH	Data is not available	Data is not available	AGC MAVG - entered - Excess Energy
2/25/2015 3:38	0:04	AWE	0 121	2 333	AGC MAVG - entered - Excess Energy
2/25/2015 3:40	0:02	KWP	0 053	23 799	AGC MAVG - entered - Excess Energy
2/25/2015 3:44	1:03	KWP	7 030	29 229	AGC MAVG - entered - Excess Energy, AGC MAVG - calculated, Testing, and AGC MAVG - calculated
2/25/2015 3:44	2:08	AWE	16 748	21 000	MAVG - calculated
2/25/2015 4:40	0:02	KWP	0 037	27 860	AGC MAVG - calculated
2/25/2015 4:57	0:01	KWP	0 011	26 116	AGC MAVG - calculated
2/25/2015 5:58	0:13	AWE	0 656	21 000	AGC MAVG - calculated
2/25/2015 6:15	0:24	KWPH	2 175	19 138	AGC MAVG - calculated
2/25/2015 7:04	0:08	KWPH	0 054	20 708	AGC MAVG - calculated
2/25/2015 7:44	0:11	KWPH	0 431	19 367	AGC MAVG - calculated and Testing
2/25/2015 7:59	5:16	KWPH	84 712	20 708	AGC MAVG - calculated and Testing
2/25/2015 8:59	0:03	AWE	0 006	21 000	AGC MAVG - calculated and Testing
2/25/2015 10:25	0:02	AWE	0 008	21 000	AGC MAVG - calculated and Testing
2/25/2015 10:29	0:01	AWE	0 000	21 000	AGC MAVG - calculated and Testing
2/25/2015 10:33	0:01	AWE	0 001	20 623	AGC MAVG - calculated and Testing
2/25/2015 10:35	0:01	AWE	0 001	21 000	AGC MAVG - calculated and Testing
2/25/2015 11:17	1:49	AWE	12 260	21 000	AGC MAVG - calculated and Testing
2/25/2015 12:48	0:06	AWE	0 070	21 000	AGC MAVG - calculated and Testing
2/25/2015 12:55	0:01	AWE	0 000	21 000	AGC MAVG - calculated and Testing
2/25/2015 12:57	0:15	AWE	0 108	21 000	AGC MAVG - calculated and Testing
2/25/2015 13:14	0:01	AWE	0 000	21 000	AGC MAVG - calculated
2/25/2015 13:17	1:45	KWPH	14 043	20 133	AGC MAVG - calculated and Testing
2/25/2015 13:25	0:01	AWE	0 000	21 000	AGC MAVG - calculated and Testing
2/25/2015 13:26	0:15	AWE	0 038	21 000	AGC MAVG - calculated and Testing
2/25/2015 13:45	0:05	AWE	0 006	21 000	AGC MAVG - calculated and Testing
2/25/2015 14:30	0:05	AWE	0 010	21 000	AGC MAVG - calculated and Testing
2/25/2015 14:36	0:01	AWE	0 001	21 000	AGC MAVG - calculated and Testing
2/25/2015 15:03	0:01	KWPH	0 030	14 328	AGC MAVG - calculated
2/25/2015 15:10	0:01	KWPH	0 002	15 207	AGC MAVG - calculated
2/25/2015 15:11	0:01	KWPH	0 032	12 579	AGC MAVG - calculated
2/25/2015 15:21	0:01	KWPH	0 020	11 638	AGC MAVG - calculated
2/25/2015 15:23	0:02	KWPH	0 037	13 068	AGC MAVG - calculated
2/25/2015 15:30	0:02	KWPH	0 041	16 482	AGC MAVG - calculated
2/25/2015 15:36	0:01	KWPH	0 014	17 766	AGC MAVG - calculated
2/25/2015 15:36	0:02	KWPH	0 077	15 037	AGC MAVG - calculated
2/25/2015 15:48	0:03	KWPH	0 093	13 701	AGC MAVG - calculated
2/25/2015 15:55	0:06	KWPH	0 196	19 917	AGC MAVG - calculated
2/25/2015 16:01	0:01	KWPH	0 001	20 539	AGC MAVG - calculated
2/25/2015 16:07	0:01	KWPH	0 002	20 523	AGC MAVG - calculated
2/25/2015 16:10	0:19	KWPH	0 305	20 473	AGC MAVG - calculated
2/25/2015 16:33	0:01	KWPH	0 001	20 374	AGC MAVG - calculated
2/26/2015 16:36	0:01	KWPH	0 001	20 825	AGC MAVG - calculated
2/26/2015 19:05	0:01	KWPH	0 000	20 872	AGC MAVG - calculated
2/26/2015 19:08	0:01	KWPH	0 001	20 883	AGC MAVG - calculated
2/26/2015 19:19	0:18	KWPH	0 335	20 571	AGC MAVG - calculated
2/26/2015 19:37	0:10	KWPH	0 170	20 414	AGC MAVG - calculated
2/26/2015 19:48	0:11	KWPH	0 265	19 760	AGC MAVG - calculated
2/26/2015 20:00	0:07	KWPH	0 128	20 472	AGC MAVG - calculated
2/26/2015 20:06	0:02	KWPH	0 007	20 632	AGC MAVG - calculated
2/26/2015 20:12	0:05	KWPH	0 135	20 485	AGC MAVG - calculated
2/26/2015 20:18	0:08	KWPH	0 112	20 207	AGC MAVG - calculated
2/26/2015 20:28	0:20	KWPH	0 406	20 005	AGC MAVG - calculated
2/26/2015 20:49	0:35	KWPH	0 940	20 506	AGC MAVG - calculated
2/26/2015 21:25	0:14	KWPH	0 403	18 805	AGC MAVG - calculated
2/26/2015 21:41	0:30	KWPH	1 138	20 200	AGC MAVG - calculated
2/26/2015 22:12	0:02	KWPH	0 005	20 414	AGC MAVG - calculated
2/26/2015 22:15	2:02	KWPH	15 085	20 825	AGC MAVG - calculated, AGC MAVG - entered, AGC MAVG - entered - Excess Energy, AGC MAVG - calculated, and AGC MAVG - entered - Excess Energy
2/26/2015 23:54	0:14	AWE	0 564	10 647	AGC MAVG - entered - Excess Energy, AGC MAVG - calculated, and AGC MAVG - entered - Excess Energy
2/26/2015 0:09	0:01	AWE	0 030	5 853	AGC MAVG - entered - Excess Energy
2/26/2015 0:11	0:01	AWE	0 030	4 823	AGC MAVG - entered - Excess Energy
2/26/2015 0:19	1:55	KWPH	19 180	20 124	AGC MAVG - entered - Excess Energy, AGC MAVG - calculated, AGC MAVG - entered, AGC MAVG - entered - Excess Energy, AGC MAVG - calculated, and AGC MAVG - entered - Excess Energy
2/26/2015 1:06	0:29	MH	Data is not available	Data is not available	AGC MAVG - entered - Excess Energy
2/26/2015 1:07	0:26	KWP	1 058	27 713	AGC MAVG - entered - Excess Energy
2/26/2015 1:12	0:15	AWE	0 275	2 807	AGC MAVG - entered - Excess Energy
2/26/2015 1:28	0:01	AWE	0 012	6 727	AGC MAVG - entered - Excess Energy
2/26/2015 1:30	0:01	AWE	0 001	0 070	AGC MAVG - entered - Excess Energy
2/26/2015 1:35	0:01	KWP	0 003	21 735	AGC MAVG - calculated
2/26/2015 1:48	0:01	KWP	0 011	22 843	AGC MAVG - entered - Excess Energy
2/26/2015 1:51	0:12	KWP	0 560	27 193	AGC MAVG - entered - Excess Energy
2/26/2015 2:04	0:01	KWP	0 029	18 345	AGC MAVG - entered - Excess Energy
2/26/2015 2:53	0:01	AWE	0 000	20 987	AGC MAVG - calculated
2/26/2015 4:00	0:01	AWE	0 003	20 807	AGC MAVG - calculated
2/26/2015 4:30	0:08	KWPH	0 208	2 792	AGC MAVG - calculated
2/26/2015 4:34	0:01	AWE	0 008	20 850	AGC MAVG - calculated
2/26/2015 4:41	0:16	KWPH	0 424	2 661	AGC MAVG - calculated
2/26/2015 4:42	0:01	AWE	0 001	20 880	AGC MAVG - calculated
2/26/2015 4:53	0:02	AWE	0 029	21 000	AGC MAVG - calculated
2/26/2015 5:04	0:02	KWPH	0 018	2 096	AGC MAVG - calculated
2/26/2015 5:37	0:01	AWE	0 003	20 917	AGC MAVG - calculated
2/26/2015 5:52	0:02	AWE	0 004	20 920	AGC MAVG - calculated
2/26/2015 6:06	0:26	AWE	0 278	21 000	AGC MAVG - calculated and Testing
2/26/2015 6:28	0:05	KWPH	0 021	0 854	AGC MAVG - calculated and Testing
2/26/2015 6:47	0:10	KWPH	0 080	4 069	AGC MAVG - calculated, Testing, and Good Engineering and Operating Practices
2/26/2015 6:54	0:01	AWE	0 006	14 300	AGC MAVG - calculated, Testing, and Good Engineering and Operating Practices
2/26/2015 6:59	0:10	KWPH	0 057	1 347	AGC MAVG - calculated, Testing, and Good Engineering and Operating Practices
2/26/2015 9:00	0:01	AWE	0 007	11 930	AGC MAVG - calculated, Testing, and Good Engineering and Operating Practices
2/26/2015 9:02	0:18	AWE	0 076	10 703	AGC MAVG - calculated, Testing, and Good Engineering and Operating Practices
2/26/2015 9:10	0:02	KWPH	0 008	0 760	AGC MAVG - calculated, Testing, and Good Engineering and Operating Practices
2/26/2015 9:14	0:03	KWPH	0 607	0 787	AGC MAVG - calculated, Testing, and Good Engineering and Operating Practices
2/26/2015 9:22	0:01	AWE	0 005	7 110	AGC MAVG - calculated, Testing, and Good Engineering and Operating Practices
2/26/2015 9:22	0:20	KWPH	0 110	2 836	AGC MAVG - calculated, Testing, and Good Engineering and Operating Practices
2/26/2015 9:37	0:01	AWE	0 003	5 257	AGC MAVG - calculated, Testing, and Good Engineering and Operating Practices
2/26/2015 9:43	0:04	KWPH	0 507	2 882	AGC MAVG - calculated, Testing, and Good Engineering and Operating Practices
2/26/2015 9:48	1:07	KWPH	0 501	4 965	AGC MAVG - calculated, Testing, and Good Engineering and Operating Practices
2/26/2015 10:57	0:04	KWPH	0 018	2 851	AGC MAVG - calculated, Testing, and Good Engineering and Operating Practices
2/26/2015 11:03	0:02	KWPH	0 002	2 718	AGC MAVG - calculated, Testing, and Good Engineering and Operating Practices
2/26/2015 11:06	0:08	KWPH	0 054	3 067	AGC MAVG - calculated, Testing, and Good Engineering and Operating Practices
2/26/2015 11:15	0:01	KWPH	0 004	2 872	AGC MAVG - calculated, Testing, and Good Engineering and Operating Practices
2/26/2015 11:17	0:03	KWPH	0 007	3 127	AGC MAVG - calculated, Testing, and Good Engineering and Operating Practices
2/26/2015 11:21	0:07	KWPH	0 054	3 208	AGC MAVG - calculated, Testing, and Good Engineering and Operating Practices
2/26/2015 11:26	0:02	AWE	0 006	1 190	AGC MAVG - calculated, Testing, and Good Engineering and Operating Practices

RSWG Maui Curtailment Report February 2015



Start Date and Time	Duration	IPP Curtailed	Estimated Curtailed MWh	Pass MW Curtailed	Reasons for Curtailment
2/26/2015 11:33	0:20	KWPHI	0.003	2.301	AGC MAVG - calculated Testing and Good Engineering and Operating Practices
2/26/2015 11:39	0:20	KWPHI	0.104	2.880	AGC MAVG - calculated Testing and Good Engineering and Operating Practices
2/26/2015 11:55	0:04	AWE	0.003	1.887	AGC MAVG - calculated Testing and Good Engineering and Operating Practices
2/26/2015 12:00	0:04	AWE	0.034	1.403	AGC MAVG - calculated Testing and Good Engineering and Operating Practices
2/26/2015 12:01	0:03	KWPHI	0.015	1.572	AGC MAVG - calculated Testing and Good Engineering and Operating Practices
2/26/2015 12:05	0:14	AWE	0.110	1.757	AGC MAVG - calculated Testing and Good Engineering and Operating Practices
2/26/2015 12:06	0:02	KWPHI	0.003	1.260	AGC MAVG - calculated Testing and Good Engineering and Operating Practices
2/26/2015 12:09	0:05	KWPHI	0.022	1.308	AGC MAVG - calculated Testing and Good Engineering and Operating Practices
2/26/2015 12:15	0:01	KWPHI	0.000	0.830	AGC MAVG - calculated Testing and Good Engineering and Operating Practices
2/26/2015 12:23	0:06	KWPHI	0.035	1.882	AGC MAVG - calculated Testing and Good Engineering and Operating Practices
2/26/2015 12:32	0:18	KWPHI	0.064	2.148	AGC MAVG - calculated Testing and Good Engineering and Operating Practices
2/26/2015 12:45	0:01	AWE	0.002	2.493	AGC MAVG - calculated Testing and Good Engineering and Operating Practices
2/26/2015 12:47	0:01	AWE	0.003	2.713	AGC MAVG - calculated Testing and Good Engineering and Operating Practices
2/26/2015 12:48	0:01	AWE	0.001	2.630	AGC MAVG - calculated Testing and Good Engineering and Operating Practices
2/26/2015 12:50	0:07	KWPHI	0.028	1.370	AGC MAVG - calculated Testing and Good Engineering and Operating Practices
2/26/2015 12:51	0:05	AWE	0.006	3.150	AGC MAVG - calculated Testing and Good Engineering and Operating Practices
2/26/2015 12:57	0:05	AWE	0.007	2.880	AGC MAVG - calculated Testing and Good Engineering and Operating Practices
2/26/2015 13:01	0:01	KWPHI	0.001	1.101	AGC MAVG - calculated Testing and Good Engineering and Operating Practices
2/26/2015 13:03	0:03	AWE	0.003	2.307	AGC MAVG - calculated Testing and Good Engineering and Operating Practices
2/26/2015 13:04	0:07	KWPHI	0.042	1.347	AGC MAVG - calculated Testing and Good Engineering and Operating Practices
2/26/2015 13:07	0:06	AWE	0.012	2.183	AGC MAVG - calculated Testing and Good Engineering and Operating Practices
2/26/2015 13:15	0:05	KWPHI	0.008	0.879	AGC MAVG - calculated Testing and Good Engineering and Operating Practices
2/26/2015 13:17	0:03	AWE	0.018	1.480	AGC MAVG - calculated Testing and Good Engineering and Operating Practices
2/26/2015 13:23	0:01	AWE	0.001	2.120	AGC MAVG - calculated Testing and Good Engineering and Operating Practices
2/26/2015 13:23	0:08	KWPHI	0.030	1.149	AGC MAVG - calculated Testing and Good Engineering and Operating Practices
2/26/2015 13:25	0:03	AWE	0.002	2.723	AGC MAVG - calculated Testing and Good Engineering and Operating Practices
2/26/2015 13:29	0:06	AWE	0.011	3.013	AGC MAVG - calculated Testing and Good Engineering and Operating Practices
2/26/2015 13:32	0:01	KWPHI	0.005	0.522	AGC MAVG - calculated Testing and Good Engineering and Operating Practices
2/26/2015 13:34	0:03	KWPHI	0.015	0.768	AGC MAVG - calculated Testing and Good Engineering and Operating Practices
2/26/2015 13:38	0:04	KWPHI	0.018	0.815	AGC MAVG - calculated Testing and Good Engineering and Operating Practices
2/26/2015 13:40	0:04	AWE	0.007	3.720	AGC MAVG - calculated Testing and Good Engineering and Operating Practices
2/26/2015 13:43	0:01	KWPHI	0.002	0.849	AGC MAVG - calculated Testing and Good Engineering and Operating Practices
2/26/2015 13:45	0:04	AWE	0.006	3.510	AGC MAVG - calculated Testing and Good Engineering and Operating Practices
2/26/2015 13:46	0:03	KWPHI	0.008	0.740	AGC MAVG - calculated Testing and Good Engineering and Operating Practices
2/27/2015 4:50	0:02	KWPHI	0.018	3.501	AGC MAVG - calculated
2/27/2015 5:00	0:01	KWPHI	0.007	4.275	AGC MAVG - calculated
2/27/2015 5:03	0:04	KWPHI	0.034	4.819	AGC MAVG - calculated
2/27/2015 5:09	0:03	KWPHI	0.017	4.145	AGC MAVG - calculated
2/27/2015 5:13	0:01	KWPHI	0.006	4.157	AGC MAVG - calculated
2/27/2015 5:18	0:07	KWPHI	0.036	4.112	AGC MAVG - calculated
2/27/2015 5:26	0:02	KWPHI	0.015	3.124	AGC MAVG - calculated
2/27/2015 5:32	0:01	KWPHI	0.003	3.410	AGC MAVG - calculated
2/27/2015 5:34	0:01	KWPHI	0.008	3.487	AGC MAVG - calculated
2/27/2015 6:37	0:03	KWPHI	0.021	3.005	AGC MAVG - calculated
2/27/2015 5:44	0:01	KWPHI	0.003	2.280	AGC MAVG - calculated
2/27/2015 5:46	0:01	KWPHI	0.005	2.090	AGC MAVG - calculated
2/27/2015 13:48	0:03	KWPHI	0.042	6.513	AGC MAVG - calculated
2/27/2015 14:19	0:12	KWPHI	0.182	12.885	AGC MAVG - calculated
2/27/2015 15:05	0:16	KWPHI	0.262	10.848	AGC MAVG - calculated
2/27/2015 15:24	0:01	KWPHI	0.010	8.485	AGC MAVG - calculated
2/27/2015 15:30	0:02	KWPHI	0.032	9.770	AGC MAVG - calculated
2/27/2015 15:36	0:16	KWPHI	0.372	12.439	AGC MAVG - calculated
2/27/2015 15:37	0:14	KWPHI	0.343	10.512	AGC MAVG - calculated
2/27/2015 18:12	0:04	KWPHI	0.046	7.387	AGC MAVG - calculated
2/27/2015 18:19	0:05	KWPHI	0.085	8.253	AGC MAVG - calculated
2/27/2015 18:25	0:10	KWPHI	0.189	7.177	AGC MAVG - calculated
2/27/2015 18:36	0:01	KWPHI	0.017	2.753	AGC MAVG - calculated
2/27/2015 19:17	0:01	KWPHI	0.001	0.056	AGC MAVG - calculated
2/27/2015 19:17	0:01	AWE	0.002	0.123	AGC MAVG - calculated
2/27/2015 19:50	0:01	KWPHI	0.017	4.421	AGC MAVG - calculated
2/27/2015 20:01	0:02	KWPHI	0.034	6.348	AGC MAVG - calculated
2/27/2015 20:04	0:05	KWPHI	0.078	5.873	AGC MAVG - calculated
2/27/2015 21:15	0:01	KWPHI	0.007	4.704	AGC MAVG - calculated
2/27/2015 21:18	0:04	KWPHI	0.075	10.739	AGC MAVG - calculated
2/27/2015 21:23	0:08	KWPHI	0.181	12.753	AGC MAVG - calculated
2/27/2015 21:32	0:08	KWPHI	0.189	11.413	AGC MAVG - calculated
2/27/2015 21:42	0:01	KWPHI	0.008	8.072	AGC MAVG - calculated
2/27/2015 21:45	0:01	KWPHI	0.008	9.389	AGC MAVG - calculated
2/27/2015 21:47	0:18	KWPHI	0.377	9.952	AGC MAVG - calculated
2/27/2015 22:04	0:01	KWPHI	0.017	5.210	AGC MAVG - calculated
2/27/2015 22:10	0:05	KWPHI	0.084	5.307	AGC MAVG - calculated
2/27/2015 22:21	0:03	KWPHI	0.031	3.892	AGC MAVG - calculated
2/27/2015 22:26	0:01	KWPHI	0.014	1.848	AGC MAVG - calculated
2/28/2015 1:13	0:01	KWPHI	0.023	8.902	AGC MAVG - calculated
2/28/2015 1:15	0:01	KWPHI	0.018	7.574	AGC MAVG - calculated
2/28/2015 1:25	0:02	KWPHI	0.013	3.082	AGC MAVG - calculated
2/28/2015 3:41	0:11	KWPHI	0.248	8.842	AGC MAVG - calculated
2/28/2015 3:53	0:03	KWPHI	0.031	8.453	AGC MAVG - calculated
2/28/2015 4:00	0:20	KWPHI	0.852	15.728	AGC MAVG - calculated
2/28/2015 5:16	0:01	KWPHI	0.000	0.005	AGC MAVG - calculated
2/28/2015 7:06	0:03	KWPHI	0.073	11.489	AGC MAVG - calculated
2/28/2015 7:13	0:16	KWPHI	0.442	18.994	AGC MAVG - calculated
2/28/2015 7:42	0:03	KWPHI	0.090	17.818	AGC MAVG - calculated
2/28/2015 9:30	0:01	KWPHI	0.005	12.818	AGC MAVG - calculated
2/28/2015 11:11	0:01	KWPHI	0.000	15.523	AGC MAVG - calculated
2/28/2015 11:31	0:02	KWPHI	0.004	14.688	AGC MAVG - calculated
2/28/2015 13:32	0:01	KWPHI	0.010	19.588	AGC MAVG - calculated
2/28/2015 13:36	0:05	KWPHI	0.098	18.701	AGC MAVG - calculated
2/28/2015 14:47	0:31	KWPHI	0.793	20.505	AGC MAVG - calculated
2/28/2015 15:19	0:06	KWPHI	0.084	20.337	AGC MAVG - calculated
2/28/2015 15:26	0:01	KWPHI	0.006	18.824	AGC MAVG - calculated
2/28/2015 15:31	0:18	KWPHI	0.431	20.301	AGC MAVG - calculated
2/28/2015 15:50	0:06	KWPHI	0.110	20.008	AGC MAVG - calculated
2/28/2015 16:00	0:03	KWPHI	0.013	20.461	AGC MAVG - calculated
2/28/2015 16:08	0:01	KWPHI	0.000	20.814	AGC MAVG - calculated
2/28/2015 16:07	0:07	KWPHI	0.042	20.514	AGC MAVG - calculated
2/28/2015 16:15	0:05	KWPHI	0.008	20.477	AGC MAVG - calculated
2/28/2015 16:21	0:05	KWPHI	0.084	20.429	AGC MAVG - calculated
2/28/2015 16:27	0:04	KWPHI	0.026	20.159	AGC MAVG - calculated
2/28/2015 16:36	0:01	KWPHI	0.001	20.564	AGC MAVG - calculated
2/28/2015 16:44	0:03	KWPHI	0.024	20.520	AGC MAVG - calculated
2/28/2015 16:57	0:04	KWPHI	0.003	20.887	AGC MAVG - calculated
2/28/2015 17:07	0:07	KWPHI	0.051	20.810	AGC MAVG - calculated
2/28/2015 17:13	0:08	KWPHI	0.098	19.988	AGC MAVG - calculated
2/28/2015 17:28	0:01	KWPHI	0.008	19.153	AGC MAVG - calculated
2/28/2015 17:31	0:09	KWPHI	0.118	19.804	AGC MAVG - calculated
2/28/2015 17:41	0:23	KWPHI	0.308	20.334	AGC MAVG - calculated
2/28/2015 18:12	0:15	KWPHI	0.424	17.893	AGC MAVG - calculated
2/28/2015 18:28	0:03	KWPHI	0.028	18.234	AGC MAVG - calculated
2/28/2015 18:45	0:02	KWPHI	0.010	20.600	AGC MAVG - calculated
2/28/2015 18:49	0:01	KWPHI	0.005	20.387	AGC MAVG - calculated
2/28/2015 18:54	0:02	KWPHI	0.001	20.684	AGC MAVG - calculated
2/28/2015 18:57	0:03	KWPHI	0.008	20.628	AGC MAVG - calculated
2/28/2015 19:03	0:02	KWPHI	0.008	20.487	AGC MAVG - calculated

RSWG Maui Curtailment Report February 2015



Start Date and Time	Duration	IPP Curtailed	Estimated Curtailed MWH	Peak MW Curtailed	Reasons for Curtailment
2/28/2015 19:06	0:03	KWPII	0.010	20.327 AGC MAVG - calculated	
2/28/2015 19:10	0:04	KWPII	0.022	19.869 AGC MAVG - calculated	
2/28/2015 19:16	0:01	KWPII	0.001	19.031 AGC MAVG - calculated	
2/28/2015 19:22	0:16	KWPII	0.142	20.392 AGC MAVG - calculated	
2/28/2015 19:41	0:19	KWPII	0.235	17.245 AGC MAVG - calculated	
2/28/2015 20:01	0:10	KWPII	0.117	13.049 AGC MAVG - calculated	
2/28/2015 20:12	0:06	KWPII	0.239	13.620 AGC MAVG - calculated	
2/28/2015 20:22	0:02	KWPII	0.014	9.761 AGC MAVG - calculated	
2/28/2015 20:30	0:16	KWPII	0.396	15.392 AGC MAVG - calculated	
2/28/2015 20:53	0:02	KWPII	0.016	16.915 AGC MAVG - calculated	
2/28/2015 20:56	0:02	KWPII	0.004	18.506 AGC MAVG - calculated	
2/28/2015 21:01	0:07	KWPII	0.154	16.980 AGC MAVG - calculated	
2/28/2015 21:06	0:17	KWPII	0.460	16.076 AGC MAVG - calculated	
2/28/2015 21:36	0:01	KWPII	0.001	14.104 AGC MAVG - calculated	
2/28/2015 21:43	0:02	KWPII	0.018	17.027 AGC MAVG - calculated	
2/28/2015 21:47	0:31	KWPII	1.133	20.371 AGC MAVG - calculated	
2/28/2015 22:10	0:34	KWPII	1.112	16.979 AGC MAVG - calculated	
2/28/2015 23:00	0:01	KWPII	0.025	8.262 AGC MAVG - calculated	
2/28/2015 23:02	0:06	KWPII	0.155	8.670 AGC MAVG - calculated	
2/28/2015 23:14	0:02	KWPII	0.044	6.131 AGC MAVG - calculated	
2/28/2015 23:28	0:04	KWPII	0.050	6.545 AGC MAVG - calculated	
2/28/2015 23:34	0:02	KWPII	0.022	10.206 AGC MAVG - calculated	
2/28/2015 23:41	0:18	KWPII	0.821	17.757 AGC MAVG - calculated	

Notes

1. Curtailment for Kaheewa Wind Power ("KWPI"), Matia Hydroelectric ("MH"), AAAAA Rent-A-Space Maui LTD ("SA"), Boreal Solar, LLC ("BS"), Auwahi Wind Energy ("AWE") and Kaheewa Wind Power II ("KWPII") may now be controlled by Maui Electric's Automatic Generation Control System ("AGC") or a Maui Electric operator-entered curtailment limit. The AGC curtailment control automatically calculates the amount of Maximum Allowable Variable Generation ("MAVG") that Maui Electric can accept into the Maui system based on the system current available variable generation ("CAVG"), regulating reserve down requirement ("RRDR") and available regulating reserve down ("ARRD"). Thus, the AGC MAVG is calculated as equal to CAVG less (RRDR less ARRD). Additionally, the AGC curtailment control allows the Maui Electric operator to enter an AGC MAVG value. The AGC curtailment control will employ the lesser of the AGC MAVG - calculated and AGC MAVG - entered values in the control logic.

2. The Estimated Curtailed MWH and Peak MW Curtailed are calculated with information provided by AWE, KWPI and KWPII. Maui Electric does not make any representation as to its accuracy.

3. The data to calculate the Estimated Curtailed MWH and Peak MW Curtailed is not provided by SA, BS, or MH.

4. Curtailment signals sent to SA or BS during nighttime hours are not recorded as curtailment events, because no energy generation is possible during that time.



Lanal Curtailment Report February 2015

Start Date/Time	Stop Date/Time	Duration (h:mm)	IPP Curtailed	Estimated MWh Curtailed	Peak MW Curtailed	Reasons for Curtailment
2/24/2015 13:26	2/24/2015 13:31	0:06	LSR	Data is not available	Data is not available	Good Engineering and Operating Practices
2/24/2015 13:34	2/24/2015 14:03	0:30	LSR	Data is not available	Data is not available	Good Engineering and Operating Practices
2/24/2015 14:07	2/24/2015 14:08	0:02	LSR	Data is not available	Data is not available	Good Engineering and Operating Practices
2/24/2015 14:10	2/24/2015 14:49	0:40	LSR	Data is not available	Data is not available	Good Engineering and Operating Practices
2/24/2015 14:51	2/24/2015 14:51	0:01	LSR	Data is not available	Data is not available	Good Engineering and Operating Practices
2/24/2015 14:54	2/24/2015 14:57	0:04	LSR	Data is not available	Data is not available	Good Engineering and Operating Practices
2/24/2015 14:59	2/24/2015 15:01	0:03	LSR	Data is not available	Data is not available	Good Engineering and Operating Practices
2/24/2015 15:06	2/24/2015 15:14	0:09	LSR	Data is not available	Data is not available	Good Engineering and Operating Practices
2/24/2015 15:27	2/24/2015 15:31	0:05	LSR	Data is not available	Data is not available	Good Engineering and Operating Practices
2/24/2015 15:53	2/24/2015 16:07	0:15	LSR	Data is not available	Data is not available	Good Engineering and Operating Practices
2/24/2015 16:10	2/24/2015 16:38	0:29	LSR	Data is not available	Data is not available	Good Engineering and Operating Practices
2/24/2015 16:48	2/24/2015 17:00	0:13	LSR	Data is not available	Data is not available	Good Engineering and Operating Practices
2/24/2015 17:41	2/24/2015 17:44	0:04	LSR	Data is not available	Data is not available	Good Engineering and Operating Practices
2/25/2015 7:47	2/25/2015 7:53	0:07	LSR	Data is not available	Data is not available	Good Engineering and Operating Practices
2/25/2015 8:03	2/25/2015 10:26	2:26	LSR	Data is not available	Data is not available	Good Engineering and Operating Practices
2/25/2015 10:30	2/25/2015 10:36	0:07	LSR	Data is not available	Data is not available	Good Engineering and Operating Practices
2/25/2015 10:38	2/25/2015 14:50	4:13	LSR	Data is not available	Data is not available	Good Engineering and Operating Practices
2/25/2015 14:55	2/25/2015 15:22	0:28	LSR	Data is not available	Data is not available	Good Engineering and Operating Practices
2/25/2015 15:59	2/25/2015 17:20	1:22	LSR	Data is not available	Data is not available	Good Engineering and Operating Practices
2/26/2015 8:29	2/26/2015 8:29	0:01	LSR	Data is not available	Data is not available	Good Engineering and Operating Practices
2/26/2015 8:39	2/26/2015 8:40	0:02	LSR	Data is not available	Data is not available	Good Engineering and Operating Practices
2/26/2015 8:52	2/26/2015 8:53	0:02	LSR	Data is not available	Data is not available	Good Engineering and Operating Practices
2/26/2015 8:58	2/26/2015 9:16	0:21	LSR	Data is not available	Data is not available	Good Engineering and Operating Practices
2/26/2015 9:42	2/26/2015 10:03	0:22	LSR	Data is not available	Data is not available	Good Engineering and Operating Practices
2/28/2015 10:35	2/28/2015 10:43	0:09	LSR	Data is not available	Data is not available	Good Engineering and Operating Practices
2/28/2015 11:09	2/28/2015 13:07	1:59	LSR	Data is not available	Data is not available	Good Engineering and Operating Practices
2/28/2015 13:10	2/28/2015 14:41	1:32	LSR	Data is not available	Data is not available	Good Engineering and Operating Practices
2/28/2015 14:57	2/28/2015 14:58	0:02	LSR	Data is not available	Data is not available	Good Engineering and Operating Practices
2/28/2015 15:11	2/28/2015 15:14	0:04	LSR	Data is not available	Data is not available	Good Engineering and Operating Practices
2/28/2015 15:18	2/28/2015 15:19	0:02	LSR	Data is not available	Data is not available	Good Engineering and Operating Practices
2/28/2015 15:29	2/28/2015 15:29	0:04	LSR	Data is not available	Data is not available	Good Engineering and Operating Practices
2/28/2015 15:33	2/28/2015 17:32	2:00	LSR	Data is not available	Data is not available	Good Engineering and Operating Practices
2/27/2015 7:41	2/27/2015 9:39	1:59	LSR	Data is not available	Data is not available	Good Engineering and Operating Practices
2/27/2015 9:53	2/27/2015 10:00	0:08	LSR	Data is not available	Data is not available	Good Engineering and Operating Practices
2/27/2015 10:03	2/27/2015 10:21	0:19	LSR	Data is not available	Data is not available	Good Engineering and Operating Practices
2/27/2015 10:29	2/27/2015 10:39	0:11	LSR	Data is not available	Data is not available	Good Engineering and Operating Practices
2/27/2015 10:41	2/27/2015 10:43	0:03	LSR	Data is not available	Data is not available	Good Engineering and Operating Practices
2/27/2015 11:19	2/27/2015 11:21	0:03	LSR	Data is not available	Data is not available	Good Engineering and Operating Practices
2/27/2015 11:54	2/27/2015 11:57	0:04	LSR	Data is not available	Data is not available	Good Engineering and Operating Practices
2/27/2015 12:01	2/27/2015 12:11	0:11	LSR	Data is not available	Data is not available	Good Engineering and Operating Practices
2/27/2015 12:19	2/27/2015 13:29	1:11	LSR	Data is not available	Data is not available	Good Engineering and Operating Practices
2/27/2015 13:32	2/27/2015 16:30	2:59	LSR	Data is not available	Data is not available	Good Engineering and Operating Practices
2/27/2015 16:37	2/27/2015 18:41	0:05	LSR	Data is not available	Data is not available	Good Engineering and Operating Practices
2/27/2015 16:45	2/27/2015 17:52	1:08	LSR	Data is not available	Data is not available	Good Engineering and Operating Practices
2/28/2015 9:25	2/28/2015 9:49	0:25	LSR	Data is not available	Data is not available	Good Engineering and Operating Practices
2/28/2015 10:22	2/28/2015 11:58	1:35	LSR	Data is not available	Data is not available	Good Engineering and Operating Practices
2/28/2015 11:58	2/28/2015 12:58	1:01	LSR	Data is not available	Data is not available	Good Engineering and Operating Practices
2/28/2015 13:03	2/28/2015 13:04	0:02	LSR	Data is not available	Data is not available	Good Engineering and Operating Practices
2/28/2015 13:10	2/28/2015 14:19	1:10	LSR	Data is not available	Data is not available	Good Engineering and Operating Practices
2/28/2015 14:23	2/28/2015 14:48	0:26	LSR	Data is not available	Data is not available	Good Engineering and Operating Practices
2/28/2015 14:53	2/28/2015 15:21	0:29	LSR	Data is not available	Data is not available	Good Engineering and Operating Practices
2/28/2015 15:27	2/28/2015 15:51	0:25	LSR	Data is not available	Data is not available	Good Engineering and Operating Practices
2/28/2015 15:57	2/28/2015 16:18	0:22	LSR	Data is not available	Data is not available	Good Engineering and Operating Practices
2/28/2015 16:31	2/28/2015 16:31	0:01	LSR	Data is not available	Data is not available	Good Engineering and Operating Practices
2/28/2015 16:35	2/28/2015 16:45	0:11	LSR	Data is not available	Data is not available	Good Engineering and Operating Practices

Notes

On June 27, 2012, Maui Electric notified LSR that although LSR has not operated in compliance with the revised ramp rate of 360 kW/minute Maui Electric would conditionally allow LSR to operate at the allowed capacity of 1.2 MW while the Maui Electric-Lanal Diesel Operator was in the control room

LSR possible output data is not available. Therefore, Maui Electric assumes LSR is curtailed if the LSR curtailment set point is less than 1,200 kW and LSR's output is within 50 kW of the curtailment set point

Hawai'i Electric Light Company Curtailment Report February 2015

Start Date/Time	MW output prior to start of curtailment	End Date/Time	MW output after curtailment released	Reason for Curtailment
02/03/15 02:02	17.7 MW	02/03/15 02:27	16.1 MW	Tawhiri curtailed - generation unit maintenance at Keahole.
02/19/15 00:30	17.5 MW	02/19/15 02:54	3.9 MW	Tawhiri curtailed - generation unit maintenance at Keahole.

¹ The MW output values are taken soon after curtailment is released by Hawai'i Electric Light and may not reflect their full output depending on ramp rate for the facility. The wind farms generally return immediately to full available levels, whereas PGV and Wailuku may take longer to return to scheduled or full available output levels.