
Rooftop solar benefits you and Hawai'i.



Once your system is up and running, the electricity you send into the grid will provide credits toward the electricity you use, which will reduce your monthly electric bill.

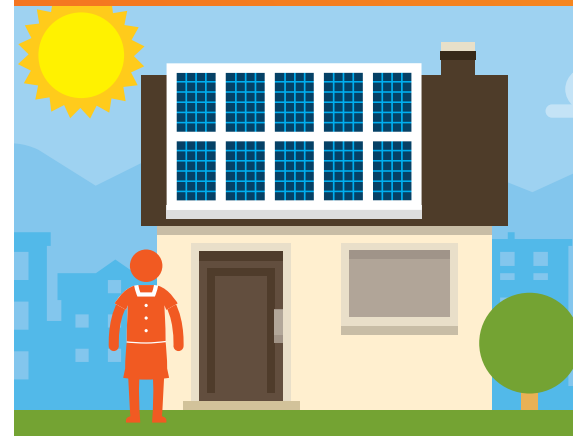
Hawai'i benefits as well. By developing many different kinds of clean local energy, including wind, solar, geothermal, waste-to-energy, biomass, biofuels, hydro and ocean energy, we'll help Hawai'i reach its goal of 100% renewable energy by 2045.

Learn more.

For more information about rooftop solar, visit:

www.hawaiianelectric.com/goingsolar

Going solar: understand the process.



Are you thinking about installing a rooftop solar system?

As a part of Hawaiian Electric's Customer Grid Supply Program, you take on new responsibilities when you install a rooftop solar system and connect it to the grid.

You become a provider of electricity to your neighbors and surrounding communities. Your system must meet key technical requirements, so that it can connect safely and reliably to the grid.

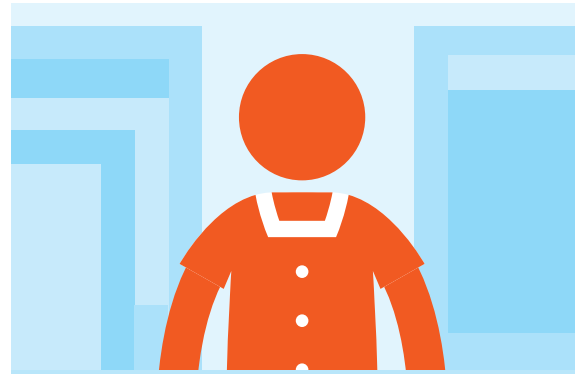
Online tools to help you.

Before you talk to a solar contractor, we recommend you use the following online tools to see if solar is right for you.

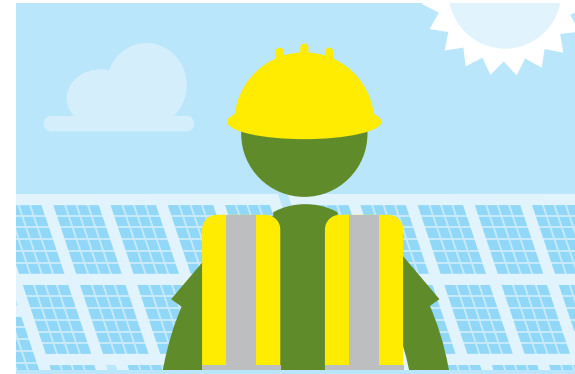
- Do an initial analysis of size and cost of your potential rooftop solar system at **hawaiianelectric.com/wattplan**.
- See how many rooftop solar and other distributed generation systems are on your neighborhood circuit at **hawaiianelectric.com/LVM**. This can help determine if your rooftop system can connect to the grid.

Meet Jan, Charlie and Keoni.

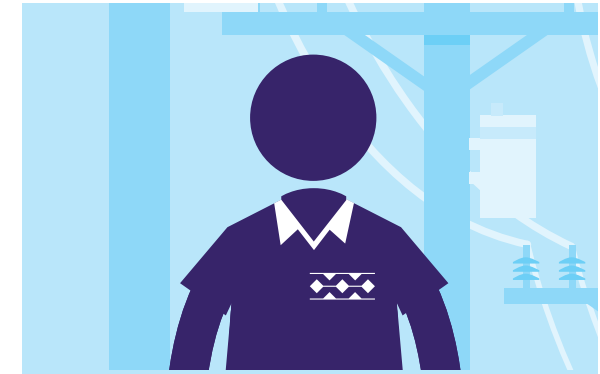
They'll help you understand the process of researching your rooftop solar system, and getting it approved and installed.



JAN: Homeowner who wants solar



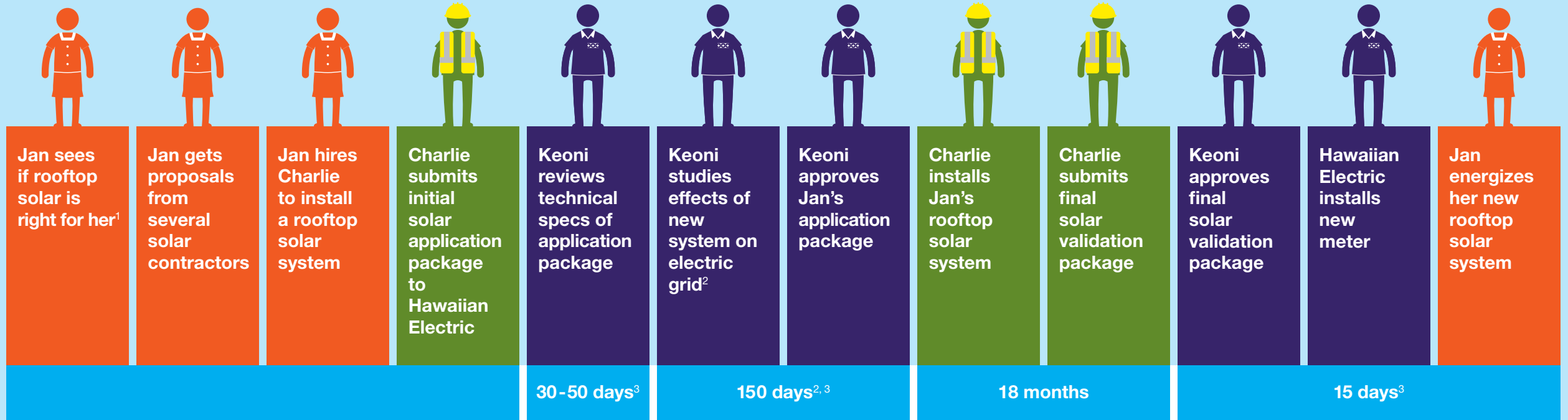
CHARLIE: Jan's solar contractor



KEONI: Hawaiian Electric engineer

ROOFTOP SOLAR PROCESS

Application, installation and activation for the Customer Grid Supply Program



1. Size and cost analysis at hawaiianelectric.com/wattplan. Systems on your neighborhood circuit at hawaiianelectric.com/LVM. 2. Grid study is not necessary if package passes technical review. If grid study is required, Jan will need to pay for the actual study. 3. Days are in reference to business days.